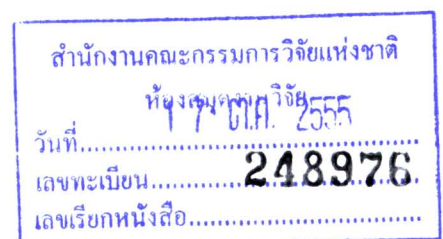




15. เอกสารอ้างอิง

1. Hansel DE, Rahman A, Hidalgo M, Thuluvath PJ, Lillemoe KD, Shulick R, Ku JL, Park JG, Miyazaki K, Ashfaq R, Wistuba II, Varma R, Hawthorne L, Geradts J, Argani P, Maitra A: Identification of novel cellular targets in biliary tract cancers using global gene expression technology. *Am J Pathol* 2003;163:217-229.
2. Khan SA, Taylor-Robinson SD, Toledano MB, Beck A, Elliott P, Thomas HC: Changing international trends in mortality rates for liver, biliary and pancreatic tumours. *J Hepatol* 2002;37:806-813.
3. Pungpak S, Akai PS, Longenecker BM, Ho M, Befus AD, Bunnag D: Tumour markers in the detection of opisthorchiasis-associated cholangiocarcinoma. *Trans R Soc Trop Med Hyg* 1991;85:277-279.
4. Jalanko H, Kuusela P, Roberts P, Sipponen P, Haglund CA, Makela O: Comparison of a new tumour marker, CA 19-9, with alpha-fetoprotein and carcinoembryonic antigen in patients with upper gastrointestinal diseases. *J Clin Pathol* 1984;37:218-222.
5. Carpelan-Holmstrom M, Louhimo J, Stenman UH, Alfthan H, Haglund C: CEA, CA 19-9 and CA 72-4 improve the diagnostic accuracy in gastrointestinal cancers. *Anticancer Res* 2002;22:2311-2316.
6. Katsanos KH, Kitsanou M, Christodoulou DK, Tsianos EV: High CA 19-9 levels in benign biliary tract diseases. Report of four cases and review of the literature. 2002;13:132-135.
7. Albert MB, Steinberg WM, Henry JP: Elevated serum levels of tumor marker CA19-9 in acute cholangitis. *Dis Sci* 1988;33:1223-1225.
8. Qin XL, Wang ZR, Shi JS, Lu M, Wang L, He QR: Utility of serum CA19-9 in diagnosis of cholangiocarcinoma: in comparison with CEA. *World J Gastroenterol* 2004;10:427-432.
9. Juntavee A, Sripa B, Pugkhem A, Khuntikeo N, Wongkham S: Expression of sialyl Lewis(a) relates to poor prognosis in cholangiocarcinoma. *World J Gastroenterol* 2005;11:249-254.
10. Luengpailin S, Wongkham S, Wongkham C, Sripa B, Sirijaichingkul S, Chauin S, Prongvitaya T, Chokkanapitak J: Demonstration of a biliary-associated glycoprotein in human serum. *Clin Chim Acta* 1996;244:237-240.
11. Wongkham S, Boonla C, Kongkham S, Wongkham C, Bhudhisawasdi V, Sripa B: Serum total sialic acid in cholangiocarcinoma patients: an ROC curve analysis. *Clin Biochem* 2001;34:537-541.
12. Wongkham S, Bhudhisawasdi V, Chau-in S, Boonla C, Muisuk K, Kongkham S, Wongkham C, Boonsiri P, Thuwajit P: Clinical significance of serum total sialic acid in cholangiocarcinoma. *Clin Chim Acta* 2003;327:139-147.
13. Kongtawelert P, Tangkijvanich P, Ong-Chai S, Poovorawan Y: Role of serum total sialic acid in differentiating cholangiocarcinoma from hepatocellular carcinoma. *World J Gastroenterol* 2003;9:2178-2181.
14. Wongkham S, Sheehan JK, Boonla C, Patrakitkomjorn S, Howard M, Kirkham S, Sripa B, Wongkham C, Bhudhisawasdi V: Serum MUC5AC mucin as a potential marker for cholangiocarcinoma. *Cancer Lett* 2003;195:93-99.
15. Boonla C, Wongkham S, Sheehan JK, Wongkham C, Bhudhisawasdi V, Tepsiri N, Pairajkul C: Prognostic value of serum MUC5AC mucin in patients with cholangiocarcinoma. *Cancer* 2003;98:1438-1443.
16. Bhudhisawasdi V, Muisuk K, Areejitranusorn P, Kularbkaew C, Khampitak T, Saeseow OT, Wongkham S: Clinical value of biliary alkaline phosphatase in non-jaundiced cholangiocarcinoma. *J Cancer Res Clin Oncol* 2004;130:87-92.



ภาคผนวก



A Novel Serum Carbohydrate Marker on Mucin 5AC

Values for Diagnostic and Prognostic Indicators for Cholangiocarcinoma

Atit Silsirivanit, PhD^{1,2}; Norie Araki, PhD³; Chaisiri Wongkham, MD, PhD^{1,2}; Chawalit Pairojkul, MD^{2,4}; Yoshiaki Narimatsu, PhD⁵; Kazuhiko Kuwahara, MD, PhD⁶; Hisashi Narimatsu, MD, PhD⁵; Sopit Wongkham, PhD^{1,2}; and Nobuo Sakaguchi, MD, PhD⁶

BACKGROUND: The incidence of cholangiocarcinoma (CCA) is increasing globally. Currently, there is no powerful marker for the diagnosis of CCA, which has led to late diagnosis and poor patient outcome. This study was designed to establish a new monoclonal antibody (MoAb) for detecting a serum marker associated with CCA. **METHODS:** Pooled CCA tissue extracts were immunized to germinal center associated nuclear protein (GANP)-transgenic mice. The antibody-producing hybridomas were prepared and initially screened by using an indirect enzyme-linked immunosorbent assay (ELISA). A positive clone that reacted strongly with CCA serum or tumor tissue extract and failed to react with normal human serum and liver extract was selected. **RESULTS:** An S121 immunoglobulin M MoAb that recognized a novel glycan epitope was obtained. Immunohistochemistry of CCA tissues revealed that the MoAb reacted strongly with hyperplastic/dysplastic and neoplastic bile ducts but not with normal bile ducts. In addition, experiments demonstrated that mucin 5AC (MUC5AC) is a core glycoprotein for the S121 epitope. A sandwich ELISA using soybean agglutinin and an S121 MoAb was developed for detecting S121 reactive antigen in patient sera. The level of serum S121 from patients with CCA was reduced significantly after tumor removal, indicating the tumor origin of this antigen. The test was able to distinguish patients with CCA from healthy individuals, active *Opisthorchis viverrini*-infected individuals and patients with various gastrointestinal cancers, hepatoma, and benign hepatobiliary diseases with 87.63% sensitivity, 89.58% specificity, an 80.95% positive predictive value, and a 93.47% negative predictive value. Moreover, high serum S121 levels were related to a poor patient outcome. **CONCLUSIONS:** The sugar antigen recognized by S121 MoAb is a new serum marker for the diagnosis and prognosis of CCA. *Cancer* 2011;117:3393-403. © 2011 American Cancer Society.

KEYWORDS: cholangiocarcinoma, tumor marker, enzyme-linked immunosorbent assay, carbohydrate marker, mucin, mucin 5AC.

Cholangiocarcinoma (CCA) is a rare cancer in Western countries but is considered the major public health problem in the northeast of Thailand, where the incidence of CCA is highest in the world.¹ With unknown factors as the cause, the incidence and mortality rate of CCA are increasing globally.¹⁻³ CCA is a slow-growing but highly metastatic tumor, which leads to the high mortality rate. Most patients present late and have a median survival of months. The late detection and poor survival after diagnosis has led a need for more powerful markers or techniques for the early diagnosis of CCA. Currently, complete resection is the therapy of choice; however, the difficulty in establishing the diagnosis of CCA preoperatively limits the number of successful treatments. Therefore, the availability of a rapid and formal proof of malignancy by using less invasive procedures, such as a serum marker, remains a constant goal in the diagnosis of CCA.

Corresponding author: Sopit Wongkham, PhD, Department of Biochemistry, Faculty of Medicine, Khon Kaen University, Khon Kaen 40002, Thailand; Fax: (011) 66-43-348-386; sopit@kku.ac.th and Nobuo Sakaguchi, MD, PhD, Department of Immunology, Graduate School of Medical Sciences, Kumamoto University, Kumamoto, 860-8556, Japan; Fax: (011) 81-96-373-5138; nobusaka@kumamoto-u.ac.jp

¹Department of Biochemistry, Faculty of Medicine, Khon Kaen University, Khon Kaen, Thailand; ²Liver Fluke and Cholangiocarcinoma Research Center, Faculty of Medicine, Khon Kaen University, Khon Kaen, Thailand; ³Department of Tumor Genetics and Biology, Graduate School of Medical Sciences, Kumamoto University, Kumamoto, Japan; ⁴Department of Pathology, Faculty of Medicine, Khon Kaen University, Khon Kaen, Thailand; ⁵Research Center for Medical Glycoscience, National Institute of Advanced Industrial Science and Technology, Ibaraki, Japan; ⁶Department of Immunology, Graduate School of Medical Sciences, Kumamoto University, Kumamoto, Japan

We thank Prof. James Will for assistance with the English-language presentation of this article.

N. Sakaguchi is a member of the Global Centers of Excellence Program of Acquired Immunodeficiency Syndrome Research in Japan.

DOI: 10.1002/cncr.25912, **Received:** October 23, 2010; **Revised:** December 7, 2010; **Accepted:** December 7, 2010, **Published online** February 1, 2011 in Wiley Online Library (wileyonlinelibrary.com)

There are several serum markers for demonstrating CCA, such as carcinoembryonic antigen (CEA),^{4,5} carbohydrate antigen 19-9 (CA 19-9), biliary alkaline phosphatase,⁶ and serum mucin 5AC (MUC5AC).⁷⁻⁹ The questions about their overall accuracy, however, limit the use of these markers for early detection. Moreover, patients without cancer may harbor low levels of these markers in blood. The discovery of a new CCA-associated marker with high sensitivity and specificity remains an important objective.

Protein-based markers potentially are powerful, because they are amenable to simple blood tests and can be tested with routine assays. The monoclonal antibody (MoAb) approach has been used for investigating new markers in several cancers.^{10,11} This attractive approach not only aids in the discovery of antigens or markers but also provides a tool for generating several marker-detection methods; moreover, it holds out the possibility of identifying a therapeutic bullet.¹² In the current report, we describe a new MoAb, S121, which specifically detects carbohydrate antigens in tumor tissues and sera from patients with CCA. The epitope is observed as a sugar moiety of mucin MUC5AC. A lectin-captured enzyme-linked immunosorbent assay (ELISA) was developed to determine the level of S121-specific carbohydrate markers in serum. We also explored the potential for using this assay as a diagnostic and prognostic marker for CCA.

MATERIALS AND METHODS

Tissues and Serum

Paraffin-embedded liver tissues and sera from patients with CCA were obtained from the Specimen Bank of the Liver Fluke and Cholangiocarcinoma Research Center, Faculty of Medicine, Khon Kaen University, Thailand. Informed consent was obtained from each patient, and the study protocol was approved by the Ethics Committee for Human Research, Khon Kaen University (HE450525 and HE471214). Preoperative sera were obtained from 97 patients with CCA, 43 patients with benign hepatobiliary diseases and 47 patients with gastrointestinal cancers (12 stomach cancers, 9 pancreatic cancers, 13 colon cancers, 3 carcinomas of the ampulla of Vater, and 10 hepatomas). Preoperative and postoperative serum samples (> 3 months postsurgery) were obtained from 17 patients with CCA. Serum samples from 52 patients who had active opisthorchiasis and from 51 healthy individuals were included as controls. All serum samples were stored at -20°C until analysis.

All cancer specimens were obtained from patients with histologically proven disease. Tumor staging was classified according to the American Joint Committee on Cancer classification and staging system.¹³ The diagnosis of benign hepatobiliary disease was based on clinical and histologic records. Opisthorchiasis was defined for asymptomatic individuals who had normal serum liver function tests and had positive detection of *Opisthorchis viverrini* eggs in their feces. Serum samples from healthy individuals were obtained from visitors at the hospital who attended an annual health checkup and were age-matched (based on their average age) with the patients with CCA.

Establishment of S121 MoAb

Two germinal center associated nuclear protein (GANP)-transgenic (Ganp^{Tg}) mice¹⁴ were injected intraperitoneally with 50 µg of pooled CCA tumor homogenates (n = 5) in complete Freund adjuvant. Two weeks later, tumor homogenates (50 µg) in incomplete Freund adjuvant were injected subcutaneously. Two weeks after the second boost, the antigen (50 µg) in incomplete Freund adjuvant was prefusion boosted, and cell fusion was performed 4 days later. The antibody-producing hybridomas initially were screened by using a standard, indirect ELISA in pooled sera from patients with CCA or healthy individuals diluted 1:1000 or in crude extracts of CCA tissue or normal liver tissue at a concentration of 50 µg protein/mL as antigen.

A positive clone (S121 MoAb) was selected that reacted strongly with CCA serum or tumor tissue extract but failed to react with normal human serum and normal human liver tissue extract. Large amounts of S121 MoAb were produced in ascetic fluids according to the standard protocol. Briefly, after priming the mice with pristine (Sigma Chemical Company, St. Louis, Mo), the hybridoma was injected intraperitoneally into Balb/c-nude mice (Charles River Japan, Yokohama, Japan) to produce the ascetic fluids. The S121 MoAb was obtained from the ascetic fluids of the mice and further purified using a KAPTIV-M immunoglobulin M (IgM) purification column (Technogen, Piana di Monte Verna, Italy) according to the manufacturer's instructions.

Immunohistochemistry of CCA Tissues Using S121 MoAb

Detection of S121-reactive antigen in CCA tissue sections with the indirect immunoperoxidase method was performed according to the standard protocol. After nonspecific binding was blocked, the sections were incubated

with 5 µg/mL of S121 MoAb at room temperature overnight and with 1:500 horseradish peroxidase (HRP)-conjugated goat antimouse IgM (Southern Biotechnology, Birmingham, Ala) for 1 hour. The immunoreactivity was developed with diaminobenzidine tetrahydrochloride (Sigma Chemical Company) and 0.1% H₂O₂ in 50 mmol/L Tris-HCl, pH 7.8. Sections that were incubated with phosphate-buffered saline (PBS) instead of S121 MoAb were used as negative controls. Anti-MUC1 antibody (Invitrogen, Carlsbad, Calif) was used as a protein-specific antibody control followed by EnVision-system-HRP (Dako, Glostrup, Denmark). The staining frequency of S121-specific antigen was scored semiquantitatively on the basis of the percentage of positive cells as negative (0% positive cells), 1+ (1%-25% positive cells), 2+ (26%-50% positive cells), or 3+ (>50% positive cells).

Characterization of S121-Reactive Epitope

To determine whether the immunoepitope of S121 MoAb was a protein or glycan moiety, protein antigen was digested by trypsin (Invitrogen) or proteinase K (Sigma Chemical Company), whereas the sugar moieties were destroyed by treatment with sodium periodate (NaIO₄) (Sigma Chemical Company).¹⁵⁻¹⁷ After deparaffinization and rehydration, the CCA tissue sections were treated either with 10 µg/mL trypsin or 10 µg/mL proteinase K at 37°C, for 1 hour or with 20 mmole/L NaIO₄ at 37°C for 2 hours. After washing with PBS, the sections were processed further for immunohistochemistry according to the standard protocol.

For characterization of the antigen epitope in serum, pooled sera (1 mg/mL) from 10 patients with CCA who had different histologic types was serially diluted 2-fold in distilled water, and 1 µL of each diluted sample was dotted onto a nitrocellulose membrane. After drying at room temperature, the membrane was treated with 10 µg/mL trypsin or proteinase K at 37°C for 1 hour. For deglycosylation, the membrane was incubated with 20 mmole/L NaIO₄ in 50 mM sodium acetate buffer, pH 4.5, at 37°C for 2 hours. Then, the membrane was washed 3 times for 10 minutes each with 0.3% Tween-20 in PBS (TPBS) and incubated with 5% skim milk in PBS for nonspecific blocking at 37°C for 1 hour. After 3 washings for 10 minutes each in TPBS, the membrane was incubated for 1 hour with 0.5 µg/mL S121 MoAb in TPBS and with 1:10,000 HRP-conjugated goat antimouse IgM at room temperature for 1 hour. Then, the membrane was developed with the Enhanced Chemiluminescence (ECL) Plus

Western Blotting Detection System (GE Healthcare, Buckinghamshire, United Kingdom). The images of ECL signals were taken with an ImageQuant 400 image analyzer and were analyzed using ImageQuant TL analysis software (GE Healthcare).

Gel-Filtration Chromatography

To determine the apparent molecular weight of S121 antigen, pooled sera from patients with CCA (100 µL) were fractionated on a 0.5 × 10 cm sepharose-6B gel-filtration chromatography column (Pharmacia Biotech, Uppsala, Sweden) using 25 mM sodium phosphate buffer, pH 7.4, in 150 mM NaCl with a constant flow rate of 0.3 mL per minute. The 0.5-mL eluted fractions were collected, and the absorbance at 280 nm was determined. The level of S121-specific antigen in each fraction was determined with a soybean agglutinin (SBA)-captured ELISA using S121 MoAb.

Sodium Dodecyl Sulfate-Polyacrylamide Gel Electrophoresis and Immunoblot

Pooled sera (30 µg) from patients with CCA were placed on 4% sodium dodecyl sulfate (SDS)-polyacrylamide gels and electrophoresed at 20 mA for 2 hours in SDS-polyacrylamide gel electrophoresis (SDS-PAGE) running buffer according to the method published by Laemmli.¹⁸ Then, the proteins were transferred onto a polyvinylidene fluoride membrane and probed by S121 MoAb as described above (see Characterization of S121-Reactive Epitope).

Glycoconjugate Microarray

The S121-specific sugar was analyzed by using a glycoconjugate microarray that consisted of 98 known sugar compounds as described previously.^{19,20} Indocarbocyanine-labeled antimouse IgM (Jackson ImmunoResearch Laboratories, West Grove, Pa) was preincubated with 1 µg/mL S121 MoAb in a probing buffer (25 mM Tris-HCl, pH 7.4; 0.8% NaCl; 1% Triton-X; 1 mM MnCl₂; and 1 mM CaCl₂) to yield a final dilution of 1:2000. The mixture (100 µL) was applied to the glycoconjugate microarray and incubated at 20°C for 3 hours. The microarray was analyzed by using an evanescent-field fluorescence-assisted scanner (SC-profiler; GP Biosciences, Yokohama, Japan).

Identification of S121 Antigen

Pooled serum samples from patients with CCA were used as a source of S121 antigen. First, albumin and immunoglobulin were depleted from the pooled sera using the

Proteo Extract Albumin/IgG Removal Kit (Calbiochem, Darmstadt, Germany) according to the manufacturer's instructions; then, they were passed through a 0.2-mL S121-immobilized agarose bead column. The unbound proteins were washed with a $\times 10$ column volume of PBS. The bound protein was eluted with $1 \times$ SDS-PAGE sample buffer and further separated by 4% SDS-PAGE.¹⁸ The pooled serum samples from healthy individuals were processed in the same manner and were used as controls (the S121-negative sample). Gel from the S121-reactive band in patient sera and the corresponding gel from healthy individuals were excised for mass spectroscopy.

Mass Spectrometry

Samples were in-gel digested with trypsin. The digested peptides were desalted by using Zip Tips C18 (Millipore; Bedford, Mass) and were analyzed with nanoelectrospray ionization liquid chromatography (LC)/tandem mass spectrometry (MS/MS) using the LC Packings Ultimate instrument on a QSTAR Pulsar i mass spectrometer (Applied Biosystems/MDS SCIEX, Foster City, Calif). The identified peptide was searched by using the Mascot search engine (Matrix Science, Tokyo, Japan). The proteins that were identified in CCA samples were subtracted from the proteins that were identified in controls.

Lectin-Captured ELISA for S121-Specific Antigens in Sera From Patients With CCA

Fifty microliters of 40 $\mu\text{g/mL}$ SBA (Sigma-Aldrich, Inc., St. Louis, Mo) in 50 mM carbonate buffer, pH 9.6, were coated into an individual well of a 96-well microtiter plate (Corning Incorporated, Corning, NY). After overnight incubation at 4°C in a moisture chamber, the plate was washed 5 times with 0.05% Tween-20 in normal saline. Unbinding sites were blocked with 200 μL of 2% bovine serum albumin (BSA) in 0.05% Tween-20 in PBS (PBST) at 37°C for 1 hour. After washing, serum samples (1:10 dilution; 50 μL) in 1% BSA-PBST were added, incubated at 37°C for 1 hour, then incubated with 50 μL of 1 $\mu\text{g/mL}$ S121 MoAb for 1 additional hour. After washing, 50 μL of 1:4000 HRP-conjugated goat anti-mouse-IgM were added and incubated at 37°C for 1 hour. After washing, freshly prepared 3,3',5,5'-tetramethyl benzidine (Sigma-Aldrich Inc.) substrate solution (100 μL) was added, and the plate was incubated in the dark for 15 minutes at room temperature; then, 50 μL of 2N sulfuric acid were added to stop the reaction. The

optical density was read at 450 nm. All samples were processed in duplicate.

MUC5AC-S121 Sandwich ELISA

To determine whether S121 antigen has a glycan moiety on MUC5AC in serum, a sandwich ELISA using anti-MUC5AC MoAb (clone 22C5)⁷ and S121 MoAb was performed. Anti-MUC5AC MoAb (10 $\mu\text{g/mL}$) was coated onto a 96-well microtiter plate overnight. The subsequent processes were similar to those described for the lectin-captured ELISA.

Statistical Analysis

Statistical analysis was performed using the SPSS software package (version 16.0; SPSS, Chicago, Ill) and SigmaStat software (version 3.1; Systat Software, San Jose, Calif). The S121-specific antigens in sera from patients with CCA were compared with those from the control groups using the Mann-Whitney *U* test. The chi-square test was used to compare the differences in clinicopathologic findings from patients with CCA. A receiver operating characteristic (ROC) curve was constructed to compare the ability of serum S121 antigen to distinguish between the patients with CCA and the control groups.²¹ The Youden index was used to select a cutoff value for the optical density (OD) that would indicate the diagnostic values of the test. Patient survival was calculated from the time of surgical resection to death. Survival analyses were performed using the Kaplan-Meier method, and survival was compared using the log-rank test. All *P* values < .05 were considered statistically significant.

RESULTS

More than 400 antibody-producing clones were screened. Of these, a MoAb designated S121 was identified that had high reactivity to pooled sera from patients with CCA but not to sera from healthy individuals. The subclass of this MoAb was named IgM/k.

S121-Specific Antigen Is Highly Expressed in Neoplastic Bile Ducts of CCA Tissue

Immunohistochemistry for S121-specific antigens was performed in 45 histologically proven CCA tumor tissues. Hepatocytes and almost all normal bile duct epithelial cells had negative immunoreactivity for the S121-specific antigen (Fig. 1A), whereas premalignant (Fig. 1B) and malignant (Fig. 1C,D) bile ducts exhibited strong positive staining. Forty-two of 45 CCA tissues (93%) had high reactivity that was both intense and frequent. Almost all

S121-reactive staining was distributed diffusely in the cytoplasm and densely at the apical surface. Some Kupffer cells and inflammatory cells exhibited positive staining. There was no statistical correlation between S121-positive tissues and tumor staging or histologic type among patients with CCA (data not shown).

S121 MoAb Recognizes High-Molecular-Weight Antigen in Sera

To identify the antigen of S121 MoAb, pooled serum samples from patients with CCA were fractionated based on their molecular weight using Sepharose 6B column

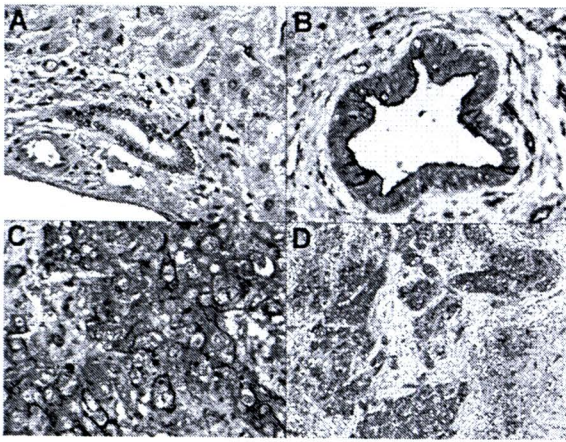


Figure 1. These photomicrographs illustrate the immunoperoxidase staining of S121 monoclonal antibody (mAb) in tissue samples of cholangiocarcinoma (CCA). (A) Normal bile duct epithelium did not stain with the S121 mAb (arrow), whereas S121-positive staining was observed in (B) hyperplasia/dysplasia and (C,D) CCA bile duct epithelium (original magnification, $\times 400$ in A-C, $\times 100$ in D).

chromatography. The S121-reactive fractions were observed mainly in the void volume (excluded fraction), suggesting a high molecular weight of S121-reactive antigen, as indicated in Figure 2A. An immunoblot analysis of serum proteins after 4% SDS-PAGE using S121 MoAb revealed an intense band at the top of the gel with an apparent molecular weight > 500 kDa (Fig. 2B).

S121 MoAb Recognizes Carbohydrate Moieties of the Antigen

Immunoblotting of serum samples from patients with CCA using S121 MoAb revealed positive reactivity in specimens that were treated with trypsin or proteinase K. In contrast, immunoreactivity was diminished in samples that were treated with sodium periodate (Fig. 3A). Similar observations were obtained with the immunohistochemistry of S121 when sections of tissue from CCA tumors were treated with trypsin, proteinase K, or sodium periodate (Fig. 3B). Positive immunohistochemical staining of S121 was retained after the protein antigens were digested with trypsin or proteinase K, whereas the signal was reduced when the sugar moieties were destroyed with sodium periodate. These results indicate the significance of the carbohydrate moieties as immunoepitopes of S121 MoAb. To demonstrate the specificity of trypsin, proteinase K, and sodium periodate treatments, the anti-MUC1 antibody, which recognizes protein fractions, was used instead of S121 MoAb. Immunoreactivity for anti-MUC1 was the reverse of what we observed for S121 MoAb. Positive immunostaining for anti-MUC1 antibody was observed in samples that were treated with sodium

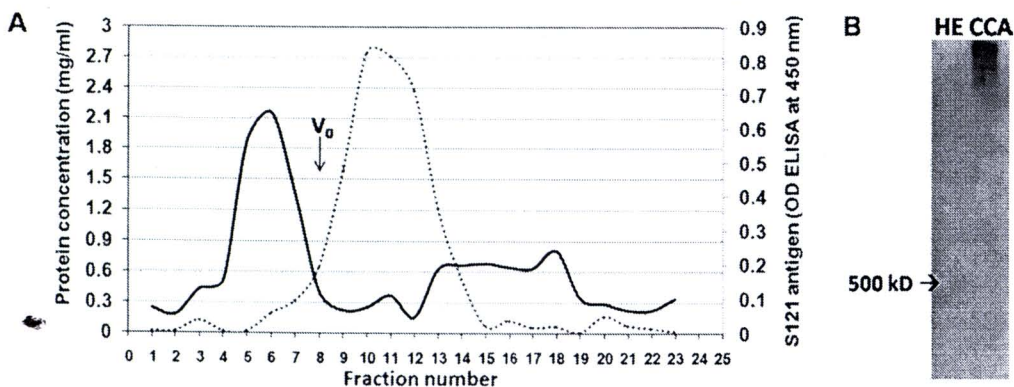


Figure 2. The S121 epitope was identified in high-molecular-weight protein fractions. (A) Pooled serum samples from patients with cholangiocarcinoma (CCA) were fractionated on a Sepharose 6B column, and the absorbance of protein at 280 nm (dotted line) and S121-specific antigen levels (solid line) were determined. S121 antigen was observed mainly in the void fractions. (B) This immunoblot of pooled sera from healthy individuals (HE) was compared with serum samples from patients with CCA. The S121 antigen was identified only in sera from patients with CCA at an apparent molecular weight > 500 kDa. OD indicates outer diameter; ELISA, enzyme-linked immunosorbent assay.

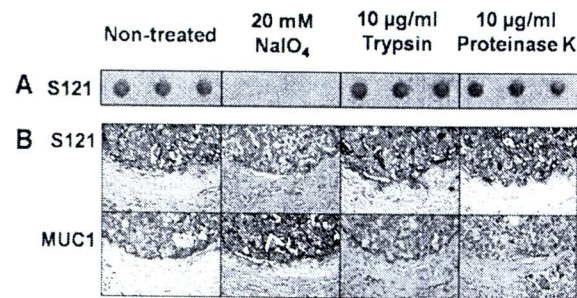


Figure 3. These images characterize S121-reactive antigen in (A) pooled serum samples from patients with cholangiocarcinoma and (B) tumor tissues that were treated either with protease (trypsin and proteinase K) or with periodate oxidation as described in the text (see Materials and Methods). After treatment, S121 antigen levels in each sample were determined using (A) immunoblotting and (B) immunohistochemistry. A monoclonal antibody against the protein part of mucin 1 (MUC1) was used as a control for the specific reactions of enzyme and sodium periodate treatment.

periodate, but immunostaining was reduced markedly in samples that were treated with trypsin or proteinase K (Fig. 3B). Taken together, these findings strongly suggest that the S121 MoAb recognizes an epitope of carbohydrate itself or an epitope that is associated with carbohydrate.

The potential structure of the glycan unit recognized by S121 MoAb was investigated further using a glycoconjugate microarray.^{19,20} Of 100 glycan structures that were immobilized in the array, no known glycan moiety or common tumor markers reported as CCA marker, such as sialyl-Lewis A (sLe^a), Le^y, Le^x, sLe^x, sialyl-Tn antigen, etc, reacted with S121 MoAb. Therefore, it is probable that S121 MoAb recognizes a new carbohydrate-associated antigen that has not yet been identified.

MUC5AC Mucin Was Identified as the Core Glycoprotein of Carbohydrate Moieties Recognized by S121 MoAb

To identify the core protein of the S121 sugar epitope, S121 antigen in sera from patients with CCA was purified by S121 MoAb-affinity chromatography and separated further by SDS-PAGE. The LC/MS/MS analysis revealed that 14 peptide were sequences generated from tryptic digested CCA serum coinciding with those of MUC5AC (Fig. 4A). To confirm that the S121-recognizing glycan epitope was a component of MUC5AC mucin, a sandwich ELISA using anti-MUC5AC (22C5-MoAb) and S121 MoAb was performed. The reactivity of S121 MoAb obtained from the sandwich ELISA system using MUC5AC antibody (22C5 MoAb) and S121 MoAb was similar to that of obtained with the lectin-captured ELISA

with S121 MoAb, as illustrated in Figure 4B. In addition, NaIO₄-treated serum samples exhibited lower reactivity for S121 MoAb obtained from the anti-MUC5AC captured sandwich ELISA system. This result indicated that the sugar moieties of MUC5AC mucin are the epitopes recognized by S121 MoAb.

Value of Serum S121 Antigen as a Diagnostic Indicator of CCA

A lectin-capture ELISA was developed to determine the levels S121-specific antigen in serum. Checkerboard studies were performed to determine the optimal concentrations of S121 MoAb and to test sera with a fixed dilution (1:4000) of HRP-conjugated goat antimouse-IgM. Plates were coated with various concentrations of SBA (10-50 µg/mL) and reacted with different dilutions of test sera. The ELISA system using 50 µL of 40 µg/mL SBA at 1:10 dilution of sera and using 50 µL of 1 µg/mL S121 MoAb yielded the highest absorbance for CCA sera and the lowest absorbance for normal, healthy sera. Therefore, this system was used for subsequent studies.

The levels of S121 antigen determined by SBA-captured ELISA in serum samples from patients with CCA and from the control groups are illustrated in Figure 5A. The median serum S121 value was elevated significantly in samples from patients with CCA compared with the median value in samples from the control groups (patients with gastrointestinal cancer, patients with benign hepatobiliary diseases, patients with opisthorchiasis, and healthy individuals; *P* < .001). An analysis of the ROC curve was performed to determine the best cutoff S121 antigen value that distinguished patients with CCA from individuals in the control groups. On the basis of ROC curve analysis, an area under the curve of 0.956 (95% confidence interval [CI], 0.934-0.977) is illustrated in Figure 5B. Using a cut-off OD of 450 nm at an area under the curve of 0.11 produced sensitivity of 87.63% (85 of 97 patients) and specificity of 89.58% (172 of 192 patients) with a positive predictive value of 80.95% (85 of 105 patients) and a negative predictive value of 93.47% (172 of 192 patients). Serum S121 levels were not associated with age, sex, histopathology, or tumor staging among the patients as determined by univariate analysis (data not shown).

To demonstrate the tumor origin of the S121 antigen identified in serum, the association of S121 antigen detected in serum and tumor tissues was investigated further. Serum levels of S121 antigen from patients with CCA were determined before and after they underwent tumor resection. Seventeen patients with CCA who did

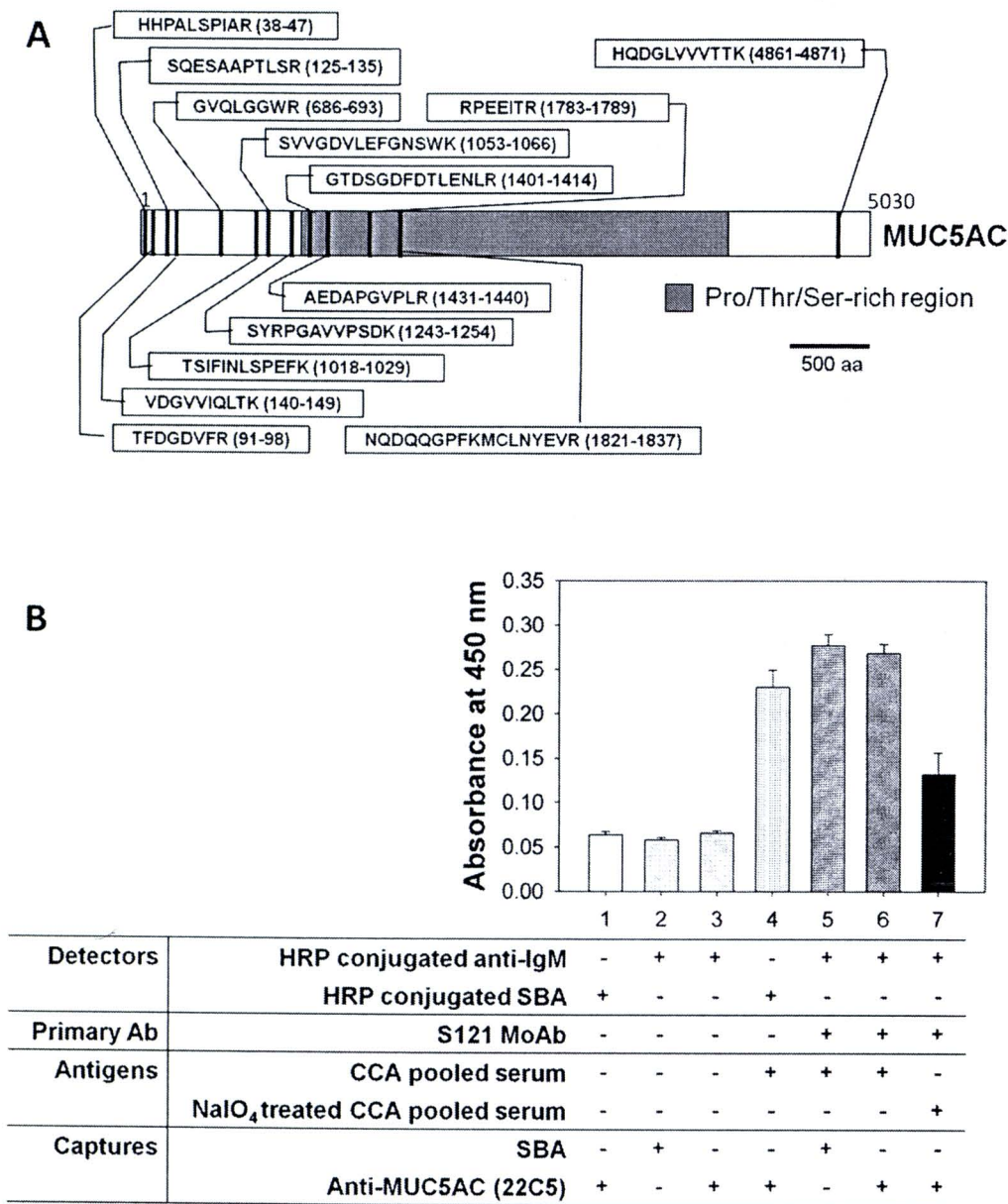


Figure 4. (A) The identified peptides from S121-purified antigen mapped on mucin 5AC (MUC5AC) are shown. Most peptides were hit at the N-terminus of MUC5AC, which is not a highly glycosylated part. Pro indicates proline; Thr, threonine; Ser, serine. (B) The presence of MUC5AC was determined in sera from patients with cholangiocarcinoma (CCA) using a sandwich enzyme-linked immunosorbent assay (ELISA) (lane 4, anti-MUC5AC and horseradish peroxidase [HRP]-conjugated soybean agglutinin [SBA]) and yielded results similar to those obtained with a lectin-captured ELISA of S121 antigen (lane 5, SBA and S121 MoAb) and from MUC5AC captured with an S121 MoAb ELISA (lane 6, anti-MUC5AC and S121 MoAb). Lanes 1, 2, and 3 were negative controls for each ELISA system. Treatment of serum with NaIO₄ at 37°C for 2 hours (lane 7) reduced the reactivity of S121 MoAb obtained from the anti-MUC5AC-captured sandwich ELISA system. IgM indicates immunoglobulin M; Ab, antibody.

not receive any treatment after tumor resection were included in this study. The elevated S121 level observed as OD in preoperative serum samples from patients with CCA was 0.324 ± 0.134 and decreased significantly to 0.239 ± 0.065 after tumor removal ($P < .001$) (Fig. 5C).

High Serum S121 Antigen Indicates a Worse Prognosis for Patients With CCA

In total, 97 patients with CCA who had different demographic characteristics were included in this study (Table 1). Patients with CCA were categorized according to their

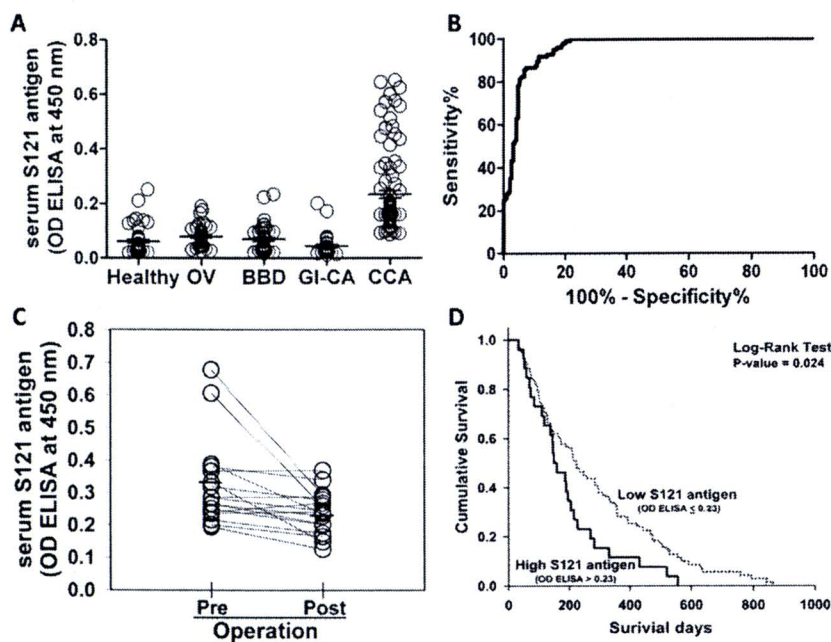


Figure 5. The determination of S121 antigen levels in serum is illustrated. (A) S121 antigen levels in sera from patients with cholangiocarcinoma (CCA) (n = 97) were determined by using a soybean agglutinin-captured enzyme-linked immunosorbent assay (ELISA) and were compared with the levels in healthy individuals (HE) (n = 51), in liver fluke-infected patients (OV) (n = 52), in patients with benign biliary diseases (BBD) (n = 43), and in patients with other gastrointestinal cancers (GI-CA) (n = 47). OD indicates outer diameter. (B) Receiver operating characteristic (ROC) analysis yielded an area under the ROC curve of 0.956 (95% confidence interval, 0.934-0.977) and a *P* value < .001. (C) The level of S121 antigen decreased significantly after tumor removal (n = 17; *P* < .001; Wilcoxon signed-rank test). (D) Kaplan-Meier analysis indicated that patients with CCA who had low serum S121 antigen levels (OD of ELISA, ≤0.23) had better survival than patients who had high serum S121 levels (OD of ELISA, >0.23; *P* = .024; log-rank test).

Table 1. Demographic Characteristics of Patients With Cholangiocarcinoma

Characteristic	No. of Patients (%)
Age, y	
≤56	45 (46.4)
>56	52 (53.6)
Sex	
Men	69 (71.1)
Women	28 (28.9)
Histopathology	
Papillary	22 (22.7)
Nonpapillary	75 (77.3)
Tumor stage	
I-III	14 (14.4)
IVA-IVB	83 (85.6)

mean serum S121 levels of the CCA into a group with low serum S121 (OD, ≤0.23 nm) and a group with high serum S121 (OD, >0.23 nm). If patients survived for <30 days, then their deaths were considered perioperative, and those patients were excluded from the analysis. A log-rank analysis indicated that patients with CCA who had low

serum S121 antigen levels had significantly better survival than the patients who had high serum S121 antigen levels (*P* = .024) (Fig. 5D). The respective median survival was 224 ± 21 days (95% CI, 183-265 days) and 148 ± 52 days (95% CI, 95-200 days) for CCA patients in the low and high serum S121 groups, respectively.

DISCUSSION

In this report, we detail the discovery of a new MoAb that specifically reacts with a novel carbohydrate moiety of a high-molecular-weight glycoprotein(s) that was identified in tumor tissues and sera from patients with CCA. By using crude extracts from pooled CCA tissues as immunogens for generating MoAbs and using serum samples from patients with CCA as antigens for MoAb screening, the S121 MoAb, which recognizes a novel carbohydrate epitope on a tumor-originated antigen, was established. We demonstrated that the recognized S121 antigen is the carbohydrate moiety of a high-molecular-weight glycoprotein(s). Antigenicity of the S121antigen was abolished when the antigen was

treated with NaIO_4 , a treatment known to oxidize and disrupt sugar conformation; whereas treatment with a proteolytic enzyme (trypsin or proteinase K) had no effect on antigenicity of the S121 antigen. This result strongly suggests that the S121 epitope has a carbohydrate structure. According to the glycoconjugated microarray results, the S121 MoAb did not recognize any of the known sugar moieties on the array, including sLe^a or CA 19-9, which are common tumor markers of many cancers, including CCA. Hence, it is possible that the S121 antigen is a novel carbohydrate moiety that is highly expressed in CCA.

In general, identifying the sugar structure on mucins, such as MUC family proteins, is very difficult, and the technology for such analysis has not been established, because those carbohydrates are composed of densely branched sugar chains that are synthesized with high diversity on the mucin core protein. The sugar array technology developed by Tateno et al¹⁹ may be the most powerful tool for identifying sugar epitopes; however, although nearly 100 distinguished sugar chain structures were displayed on our array chip, no reactivity against S121 MoAb was revealed; therefore, the epitope structure for S121 may be novel. Further study using other approaches will be needed to identify the sugar chain structure of the S121 epitope.

The S121-reactive antigen was excluded in the void volume of a Sepharose 6B column in gel-filtration chromatography and appeared at the top of a 4% SDS-PAGE gel; therefore, it may be a glycan epitope of the high-molecular-weight glycoprotein that we identified as MUC5AC mucin using S121 MoAb affinity purification and LC/MS/MS analysis. In the current study, almost all CCA tissues (93%) expressed S121 antigen in immunohistochemistry analysis. It was demonstrated previously that MUC5AC is expressed aberrantly in CCA tissues and is associated with the type, histologic grade, and advanced stage of intrahepatic CCA.⁸ To our knowledge, there have been no reports on the upstream signal of MUC5AC expression in CCA. However, recently, the Kruppel-like zinc-finger GLI1 was identified as the regulator of the MUC5AC mucin in pancreatic ductal adenocarcinoma cells.²² GLI1 up-regulated MUC5AC, attenuated E-cadherin-mediated cell-cell adhesion, and promoted cell migration and invasion. Our current results also suggest that CCA cells may have specific O-glycoenzyme up-regulation that causes the novel sugar chain modification on MUC5AC. This may be 1 of the most important mechanisms to be clarified in future studies. Currently,

our analysis of the specific glycoenzyme genes in CCA is underway.

The value of S121-reactive antigen is emphasized by our finding that it could be detected in patients' sera with high sensitivity and specificity. In addition, this antigen originated from CCA tissue, because it was not observed in the normal bile duct or hepatocytes but was detected strongly in premalignant bile duct epithelium and CCA tissues. Moreover, serum levels of S121 were reduced after tumor removal. Serum S121 levels were high in samples from patients with CCA compared with the levels in samples from the control groups, which included healthy individuals, liver fluke-infected patients, patients with benign biliary diseases, and patients with gastrointestinal tract cancers. Our ROC analysis indicated that the serum S121 antigen could be used to diagnose CCA with 87.63% sensitivity and 89.58% specificity. These data suggest that serum S121 antigen can be used as a tumor marker for CCA. Moreover, the serum S121 level can be used as a prognostic marker, because who high serum S121 levels (OD, >0.23 nm) were associated with poor survival in patients with CCA.

In the past decade, there have been several attempts to identify a better tumor marker for CCA. In addition to CEA and CA 19-9, which are the commonly used tumor markers for CCA,^{4,23-26} biliary alkaline phosphatase,⁶ and MUC5AC⁷⁻⁹ reportedly have been used as candidate markers for CCA with varied sensitivity and specificity.^{6,9,27,28} Sensitivity from 50% to 80% and specificity from 80% to 90% have been reported for CA 19-9,^{4,5,25} whereas serum MUC5AC reportedly had 60% to 70% sensitivity and 90% to 97% specificity for diagnosing CCA.⁷⁻⁹ In the current study, the S121 epitope was at least as sensitive as a carbohydrate moiety as the core protein of MUC5AC mucin. Detection of the sugar moiety provided better sensitivity, because the detection of serum S121 yielded 87.63% sensitivity and 89.58% specificity with 80.95% positive predictive value and 93.47% negative predictive value for the diagnosis of CCA. The advantage of serum S121 compared with CEA and CA 19-9 is that high levels of the S121 antigen were observed only in serum from patients with CCA but not in serum from patients who had gastric cancer, pancreatic cancer, colon cancer, carcinoma of the ampulla of Vater, and hepatoma; whereas high levels of CEA and CA 19-9 have been reported not only in patients with CCA but also in patients with many different cancers and chronic inflammatory conditions (eg, pancreatitis).^{24,29,30}

Although the molecular function of the sugar-associated epitope recognized by S121 MoAb has not been determined, the S121 antigenic moiety may play a significant role in the pathogenesis of CCA. The association between the S121 antigen and the pathogenesis of CCA is supported by many aspects of the current study. First, the antigen was detected only in pathogenic bile duct epithelium. Immunohistochemistry using the S121 MoAb revealed that the S121 antigen was not present in normal bile ducts or and hepatocytes but was expressed progressively in hyperplastic/dysplastic bile duct epithelium and CCA. Second, the S121 antigen was detected at significantly higher levels in serum from patients with CCA compared with the levels detected in serum from individuals in the non-CCA control groups. Moreover, tumor resection significantly reduced the level of S121 in serum. Third, higher serum levels of S121 antigen were associated with a worse prognosis in patients with CCA.

In summary, this study established a MoAb that we designated as S121, which recognizes a not-yet-identified, carbohydrate-associated epitope that appeared specifically in CCA tumor cells. We have established that the MoAb is applicable for studies using immunohistochemistry of paraffin-embedded sections, immunoblotting, and ELISA. The MoAb is useful as a tool for detecting S121 antigen, which is elevated in sera from patients with CCA. The ability of S121 MoAb to differentiate between neoplastic-bile duct and normal bile duct suggests the potential application of S121 MoAb in a therapeutic approach.

CONFLICT OF INTEREST DISCLOSURES

This work was cosupported by the Office of the Higher Education Commission, the National Research Council of Thailand, the National Research University Program, and Khon Kaen University and by a Research Team Strengthening Grant from the National Genetic Engineering and Biotechnology Center, National Science and Technology Development Agency, Thailand. We are grateful for support from the Japan Student Services Organization (to A. Silsirivanit), the Ministry of Health Labor and Welfare of Japan (to N. Araki), and the Kurozumi Medical Foundation (to K. Kuwahara). N. Sakaguchi received a grant from the Founding Research Center for Emerging and Reemerging Infectious Diseases and received support as a member of the Global Centers of Excellence Program of Acquired Immunodeficiency Syndrome Research in Japan.

REFERENCES

1. Shaib Y, El-Serag HB. The epidemiology of cholangiocarcinoma. *Semin Liver Dis.* 2004;24:115-125.
2. Shaib YH, Davila JA, McGlynn K, El-Serag HB. Rising incidence of intrahepatic cholangiocarcinoma in the United States: a true increase? *J Hepatol.* 2004;40:472-477.

3. Patel T. Increasing incidence and mortality of primary intrahepatic cholangiocarcinoma in the United States. *HEPATOLOGY.* 2001;33:1353-1357.
4. Qin XL, Wang ZR, Shi JS, Lu M, Wang L, He QR. Utility of serum CA19-9 in diagnosis of cholangiocarcinoma: in comparison with CEA. *World J Gastroenterol.* 2004;10:427-432.
5. Ramage JK, Donaghy A, Farrant JM, Iorns R, Williams R. Serum tumor markers for the diagnosis of cholangiocarcinoma in primary sclerosing cholangitis. *Gastroenterology.* 1995;108:865-869.
6. Bhudhisawasdi V, Muisuk K, Areejitranusorn P, et al. Clinical value of biliary alkaline phosphatase in nonjaundiced cholangiocarcinoma. *J Cancer Res Clin Oncol.* 2004;130:87-92.
7. Bamrungphon W, Prempracha N, Bunchu N, et al. A new mucin antibody/enzyme-linked lectin-sandwich assay of serum MUC5AC mucin for the diagnosis of cholangiocarcinoma. *Cancer Lett.* 2007;247:301-308.
8. Boonla C, Wongkham S, Sheehan JK, et al. Prognostic value of serum MUC5AC mucin in patients with cholangiocarcinoma. *Cancer.* 1. 2003;98:1438-1443.
9. Wongkham S, Sheehan JK, Boonla C, et al. Serum MUC5AC mucin as a potential marker for cholangiocarcinoma. *Cancer Lett.* 2003;195:93-99.
10. Krueger P, Nitz C, Foster R, et al. A new small cell lung cancer (SCLC)-specific marker discovered through antigenic subtraction of neuroblastoma cells. *Cancer Immunol Immunother.* 2003;52:367-377.
11. Krueger P, Nitz C, Moore J, Foster R, Gelber O, Gelber C. Monoclonal antibody identifies a distinctive epitope expressed by human multiple myeloma cells. *J Immunother.* 2001;24:334-344.
12. Van Aarsen LA, Leone DR, Ho S, et al. Antibody-mediated blockade of integrin alpha v beta 6 inhibits tumor progression in vivo by a transforming growth factor-beta-regulated mechanism. *Cancer Res.* 2008;68:561-570.
13. Greene FL, Page DL, Fleming ID, et al. eds. *AJCC Cancer Staging Manual.* 6th ed. New York: Springer-Verlag; 2002.
14. Sakaguchi N, Kimura T, Matsushita S, et al. Generation of high-affinity antibody against T cell-dependent antigen in the Ganp gene-transgenic mouse. *J Immunol.* 2005;174:4485-4494.
15. Bara J, Decaens C, Loridon-Rosa B, Oriol R. Immunohistological characterization of mucin epitopes by pretreatment of gastro-intestinal sections with periodic acid. *J Immunol Methods.* 1992;149:105-113.
16. Cao Y, Blohm D, Ghadimi BM, Stosiek P, Xing PX, Karsten U. Mucins (MUC1 and MUC3) of gastrointestinal and breast epithelia reveal different and heterogeneous tumor-associated aberrations in glycosylation. *J Histochem Cytochem.* 1997;45:1547-1557.
17. Gil J, Alvarez R, Vinuela JE, et al. Inhibition of in vivo tumor growth by a monoclonal IgM antibody recognizing tumor cell surface carbohydrates. *Cancer Res.* 1990;50:7301-7306.
18. Laemmli UK. Cleavage of structural proteins during the assembly of the head of bacteriophage T4. *Nature.* 1970;227:680-685.
19. Tateno H, Mori A, Uchiyama N, et al. Glycoconjugate microarray based on an evanescent-field fluorescence-assisted detection principle for investigation of glycan-binding proteins. *Glycobiology.* 2008;18:789-798.
20. Tateno H, Ohnishi K, Yabe R, et al. Dual specificity of Langerin to sulfated and mannosylated glycans via a single

- C-type carbohydrate recognition domain. *J Biol Chem.* 2010;285:6390-6400.
21. Zweig MH, Campbell G. Receiver-operating characteristic (ROC) plots: a fundamental evaluation tool in clinical medicine. *Clin Chem.* 1993;39:561-577.
 22. Inaguma S, Kasai K, Ikeda H. GLI1 facilitates the migration and invasion of pancreatic cancer cells through MUC5AC-mediated attenuation of E-cadherin [published online ahead of print October 25, 2010]. *Oncogene.* 2010.
 23. Nakeeb A, Lipsett PA, Lillemoe KD, et al. Biliary carcinoembryonic antigen levels are a marker for cholangiocarcinoma. *Am J Surg* 171:147-152, 1996; discussion 152-143.
 24. Ni XG, Bai XF, Mao YL, et al. The clinical value of serum CEA, CA19-9, and CA242 in the diagnosis and prognosis of pancreatic cancer. *Eur J Surg Oncol.* 2005;31:164-169.
 25. Patel AH, Harnois DM, Klee GG, LaRusso NF, Gores GJ. The utility of CA 19-9 in the diagnoses of cholangiocarcinoma in patients without primary sclerosing cholangitis. *Am J Gastroenterol.* 2000;95:204-207.
 26. Saito K, Fujii Y, Kawakami S, et al. Increased expression of sialyl-Lewis A correlates with poor survival in upper urinary tract urothelial cancer patients. *Anticancer Res.* 2003;23:3441-3446.
 27. Uenishi T, Yamazaki O, Tanaka H, et al. Serum cytokeratin 19 fragment (CYFRA21-1) as a prognostic factor in intrahepatic cholangiocarcinoma. *Ann Surg Oncol.* 2008;15:583-589.
 28. Watanabe H, Enjoji M, Nakashima M, et al. Clinical significance of serum RCAS1 levels detected by monoclonal antibody 22-1-1 in patients with cholangiocellular carcinoma. *J Hepatol.* 2003;39:559-563.
 29. Del Favero G, Fabris C, Panucci A, et al. Carbohydrate antigen 19-9 (CA 19-9) and carcinoembryonic antigen (CEA) in pancreatic cancer. Role of age and liver dysfunction. *Bull Cancer.* 1986;73:251-255.
 30. Del Favero G, Fabris C, Plebani M, et al. CA 19-9 and carcinoembryonic antigen in pancreatic cancer diagnosis. *Cancer.* 1986;57:1576-1579.



