

Figure 27 Estimation evapotranspiration (ETest) in Sukhothai paddy field and Lampang teak plantation during August 2002-January 2003.

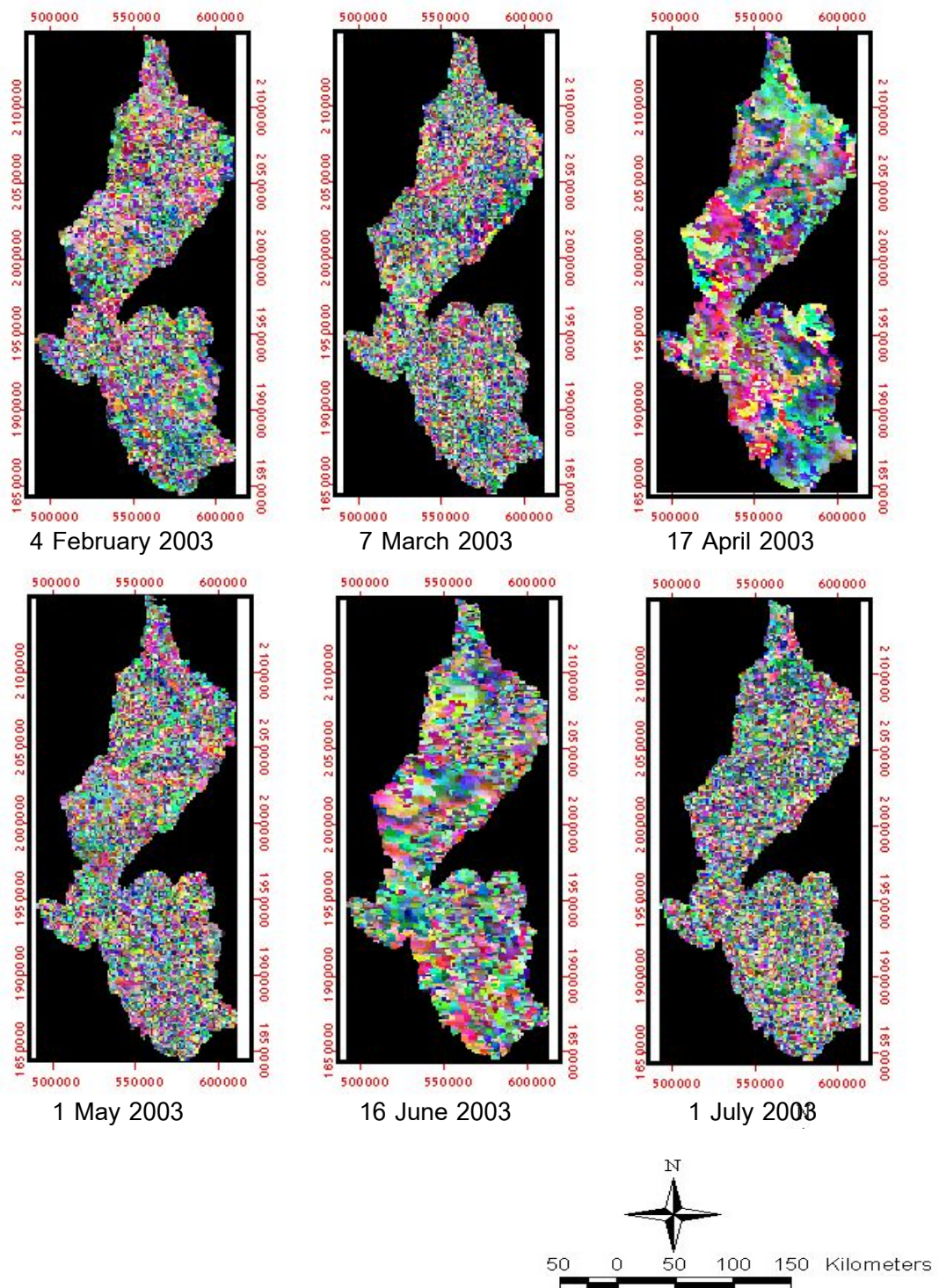


Figure 28 Estimation evapotranspiration (ETest) in Sukhothai paddy field and Lampang teak plantation during February 2003-July 2003.



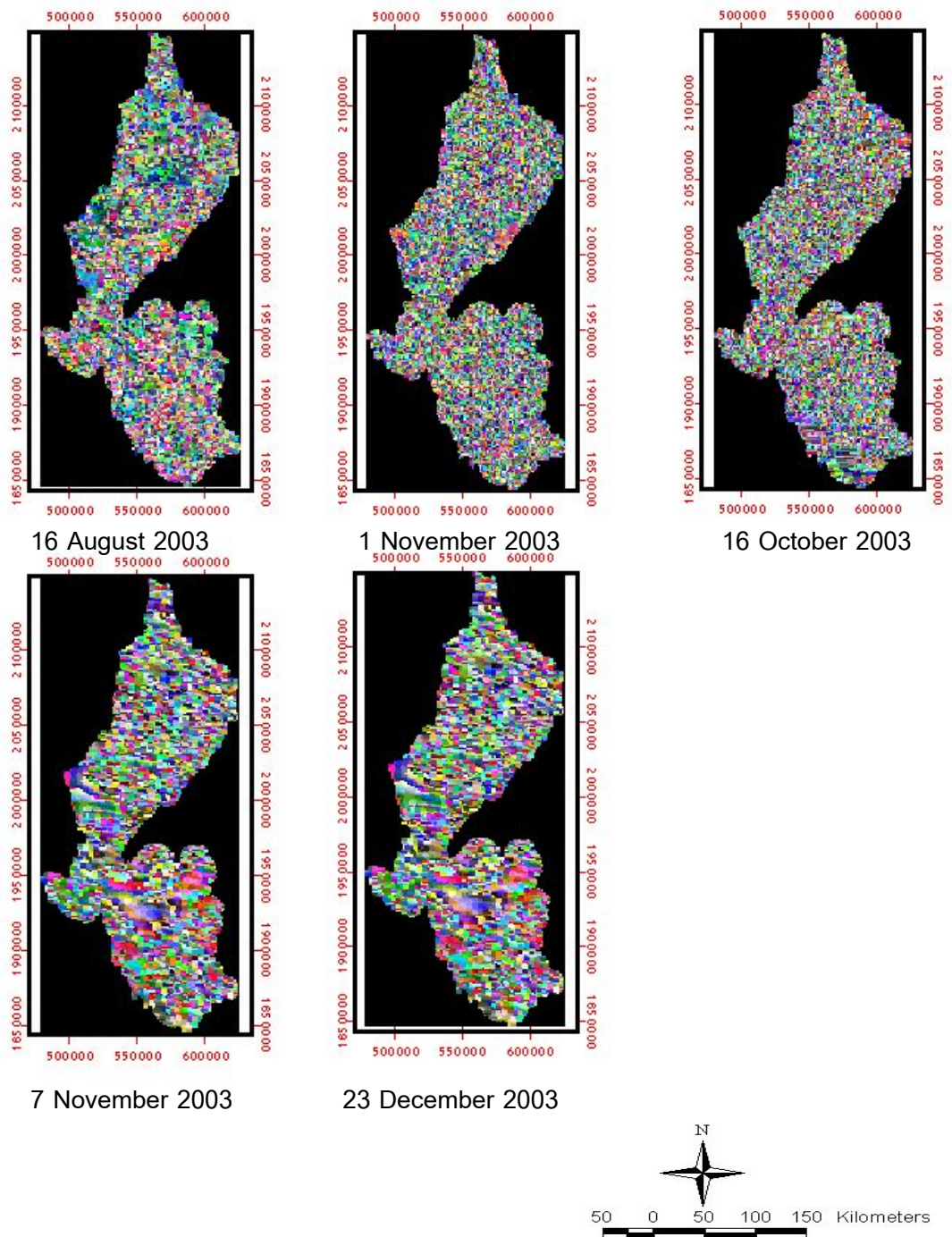


Figure 29 Estimation evapotranspiration (ETest) in Sukhothai paddy field and Lampang teak plantation during August 2003-December 2003.