

Figure 24 Evaporative fraction (EF) in Sukhothai paddy field and Lampang teak plantation during August 2002-January 2003.

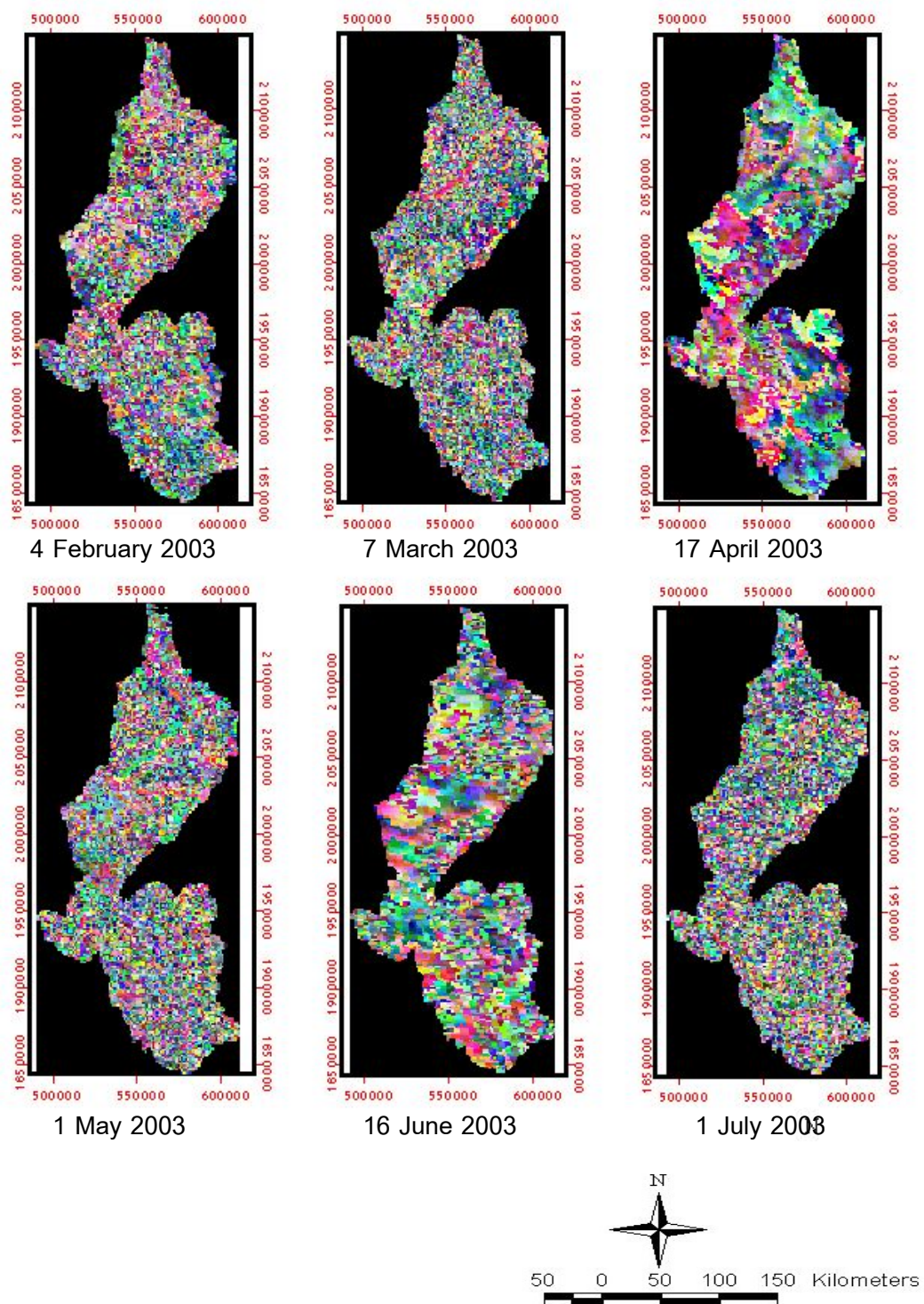


Figure 25 Evaporative fraction (EF) in Sukhothai paddy field and Lampang teak plantation during February 2003-July 2003.



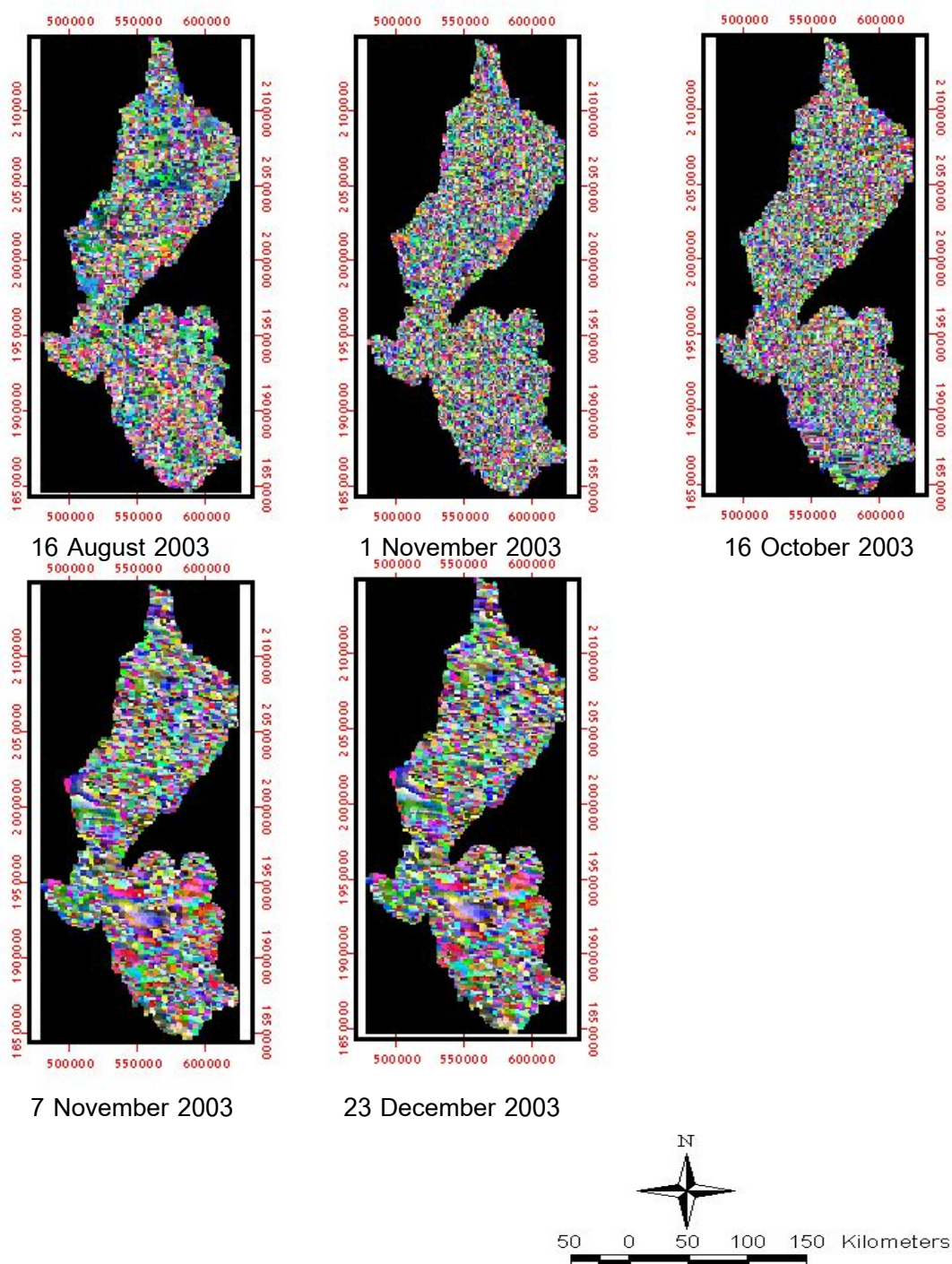


Figure 26. Evaporative fraction (EF) in Sukhothai paddy field and Lampang teak plantation during August 2003–December 2003.