

Figure 11 Normalized distribution Index (NDVI) in Sukhothai paddy field and Lampang teak plantation during August 2002-January 2003.

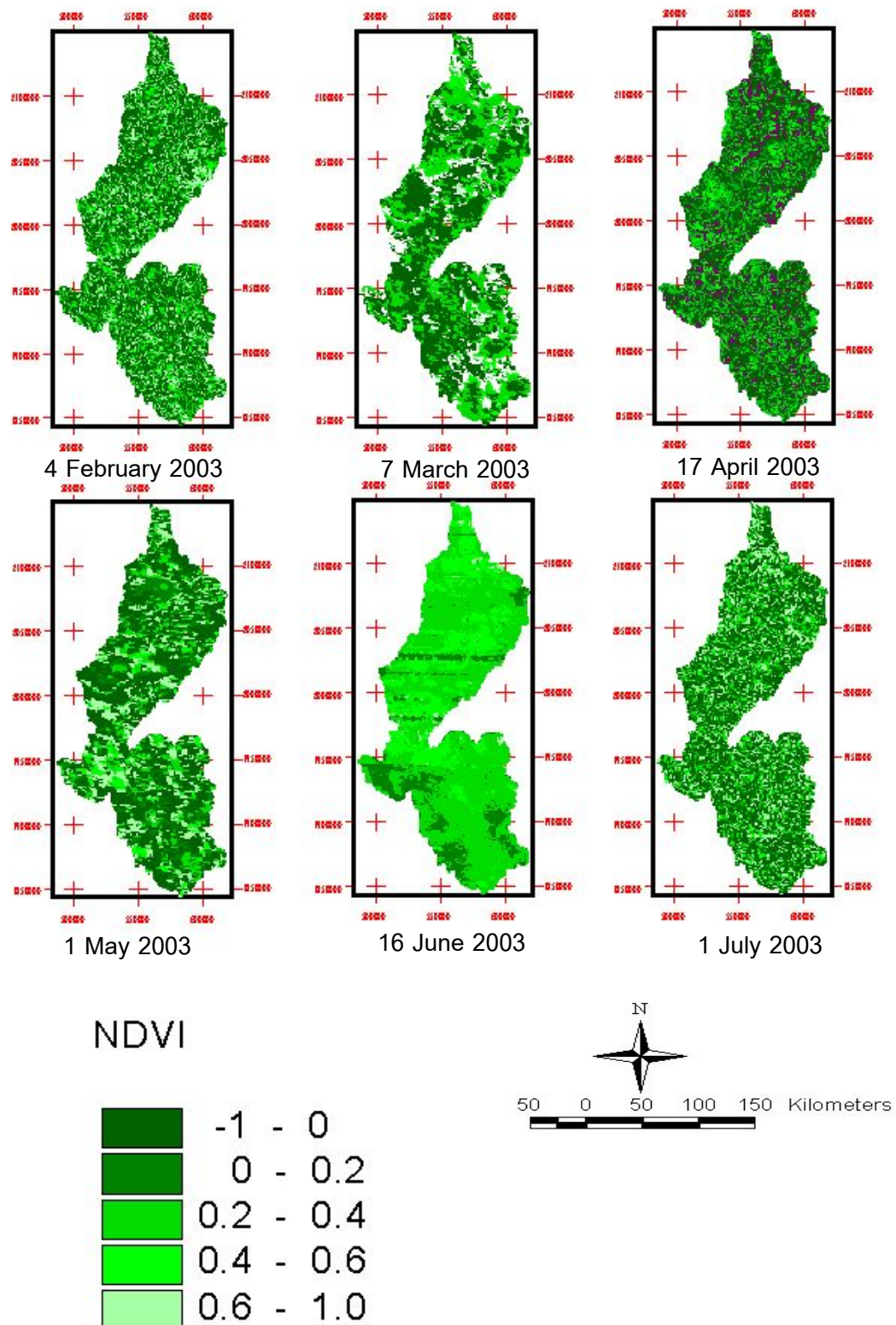


Figure 12 Normalize distribution Index (NDVI) in Sukhothai paddy field and Lampang teak plantation during February 2003-July 2003.

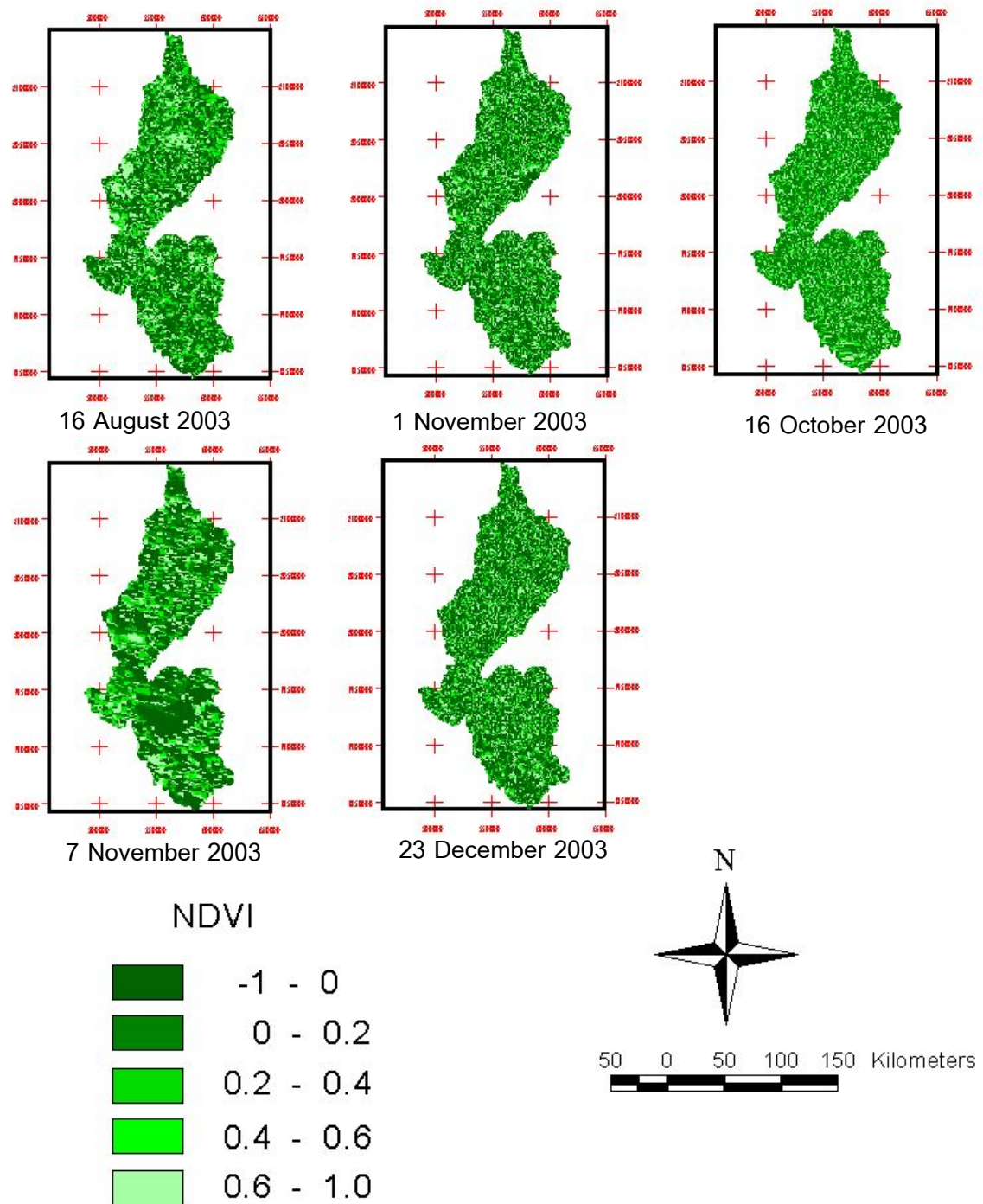


Figure 13 Normalize distribution Index (NDVI) in Sukhothai paddy field and Lampang teak plantation during August 2003-December 2003.



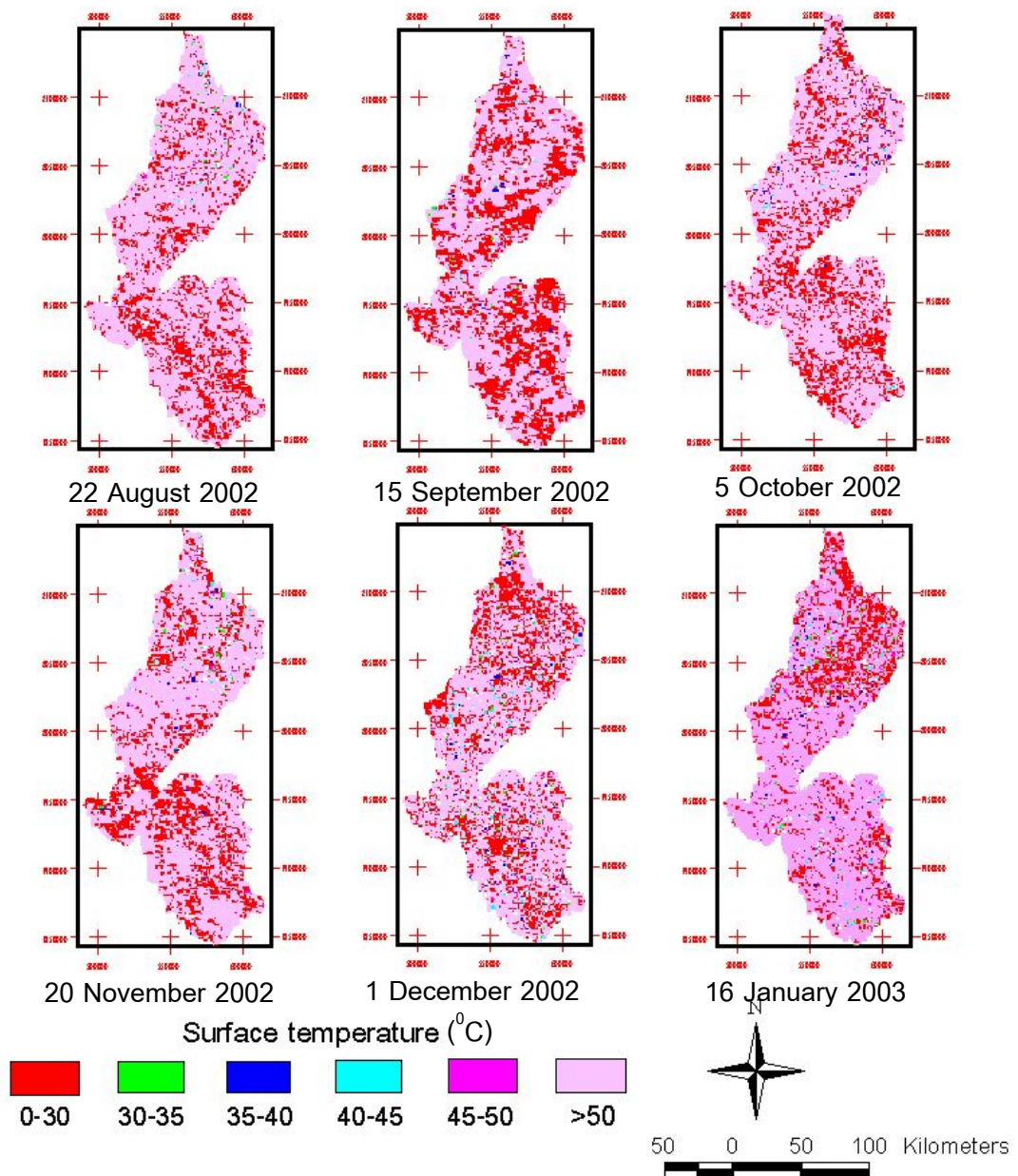


Figure 15 Surface temperature in Sukhothai paddy field and Lampang teak plantation during August 2002-January 2003.

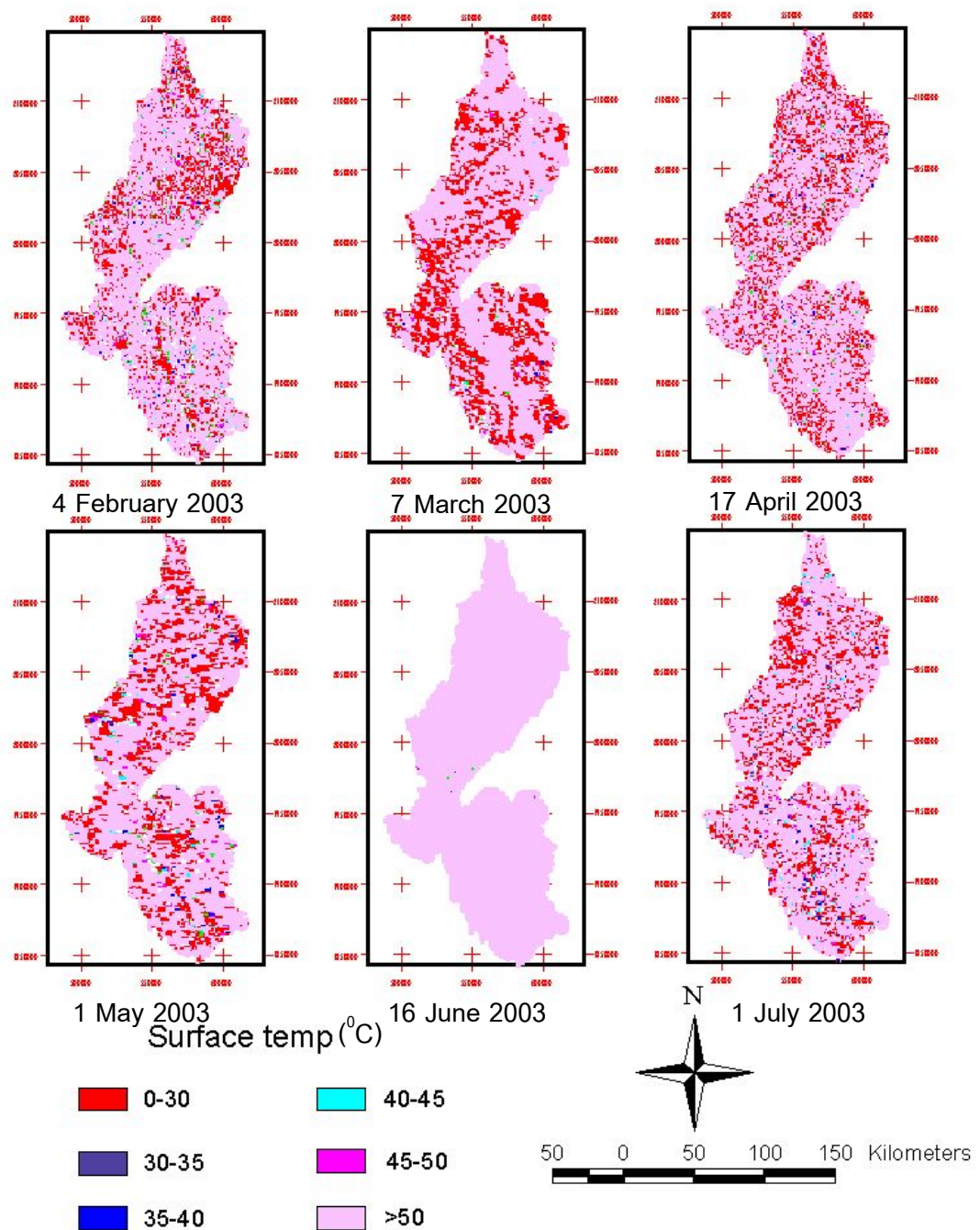


Figure 16 Surface temperature in Sukhothai paddy field and Lampang teak plantation during February 2003-July 2003.

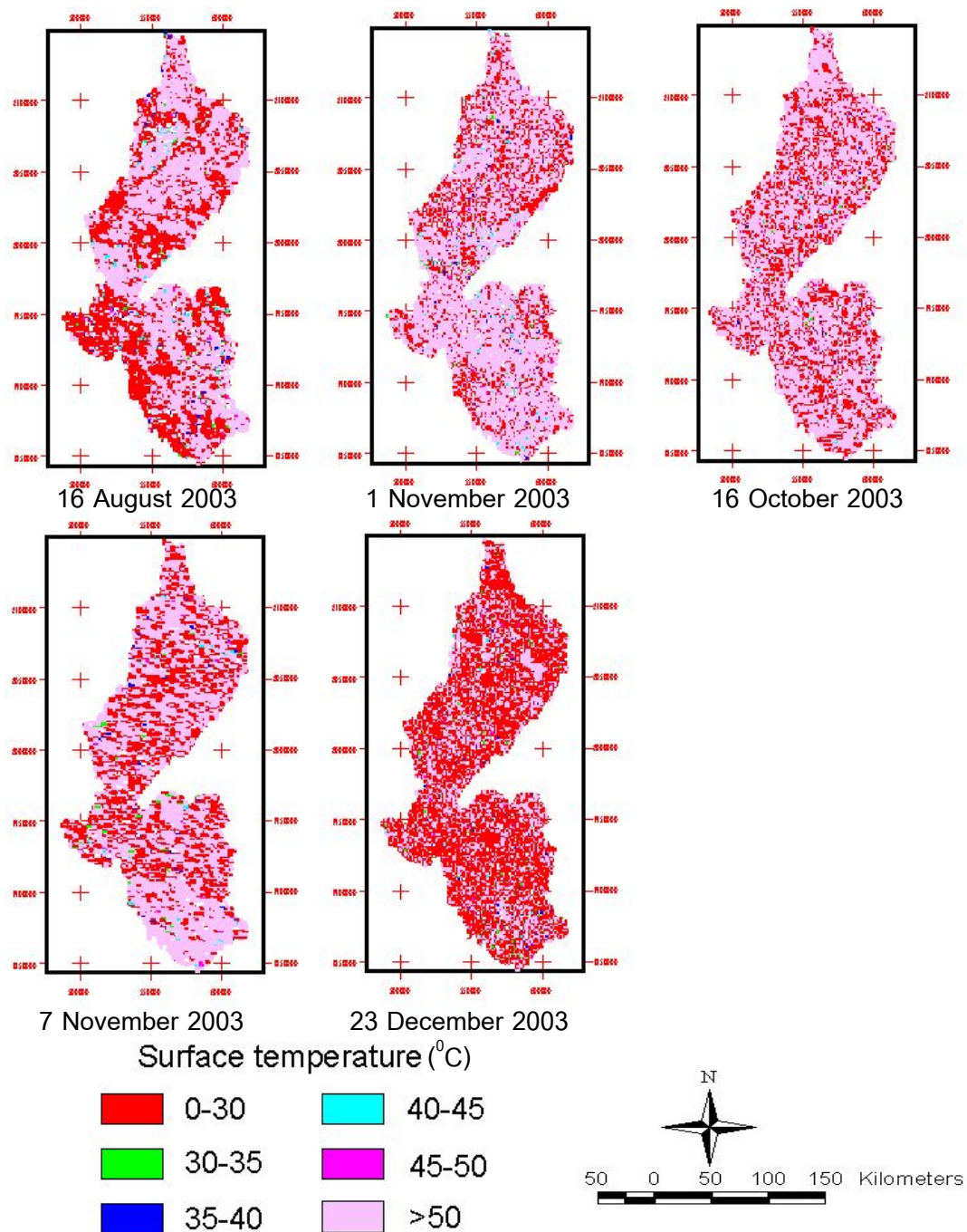


Figure 17 Surface temperature in Sukhothai paddy field and Lampang teak plantation during August 2003-December 2003.



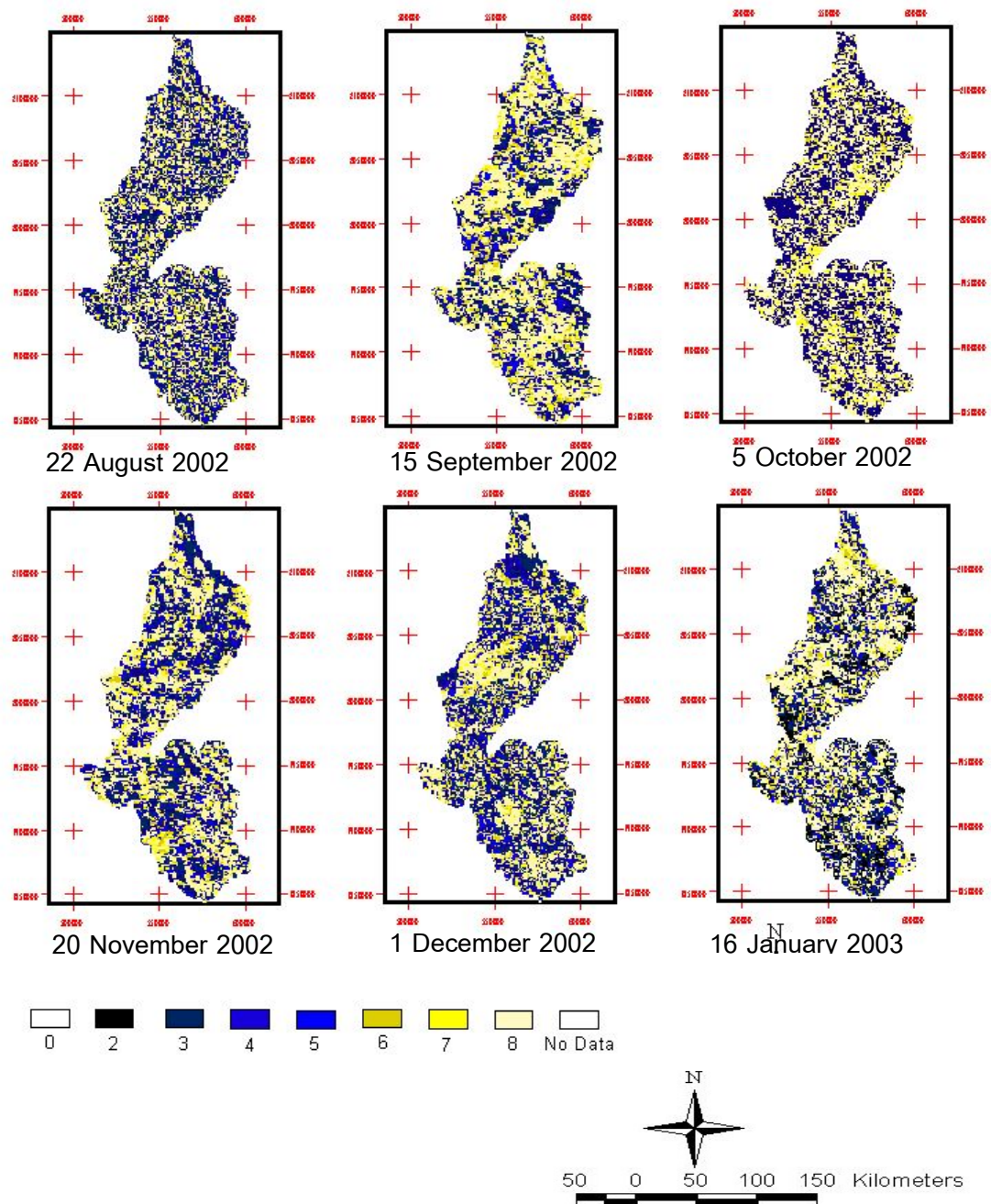


Figure 20 Surface albedo in Sukhothai paddy field and Lampang teak plantation during August 2002-January 2003.

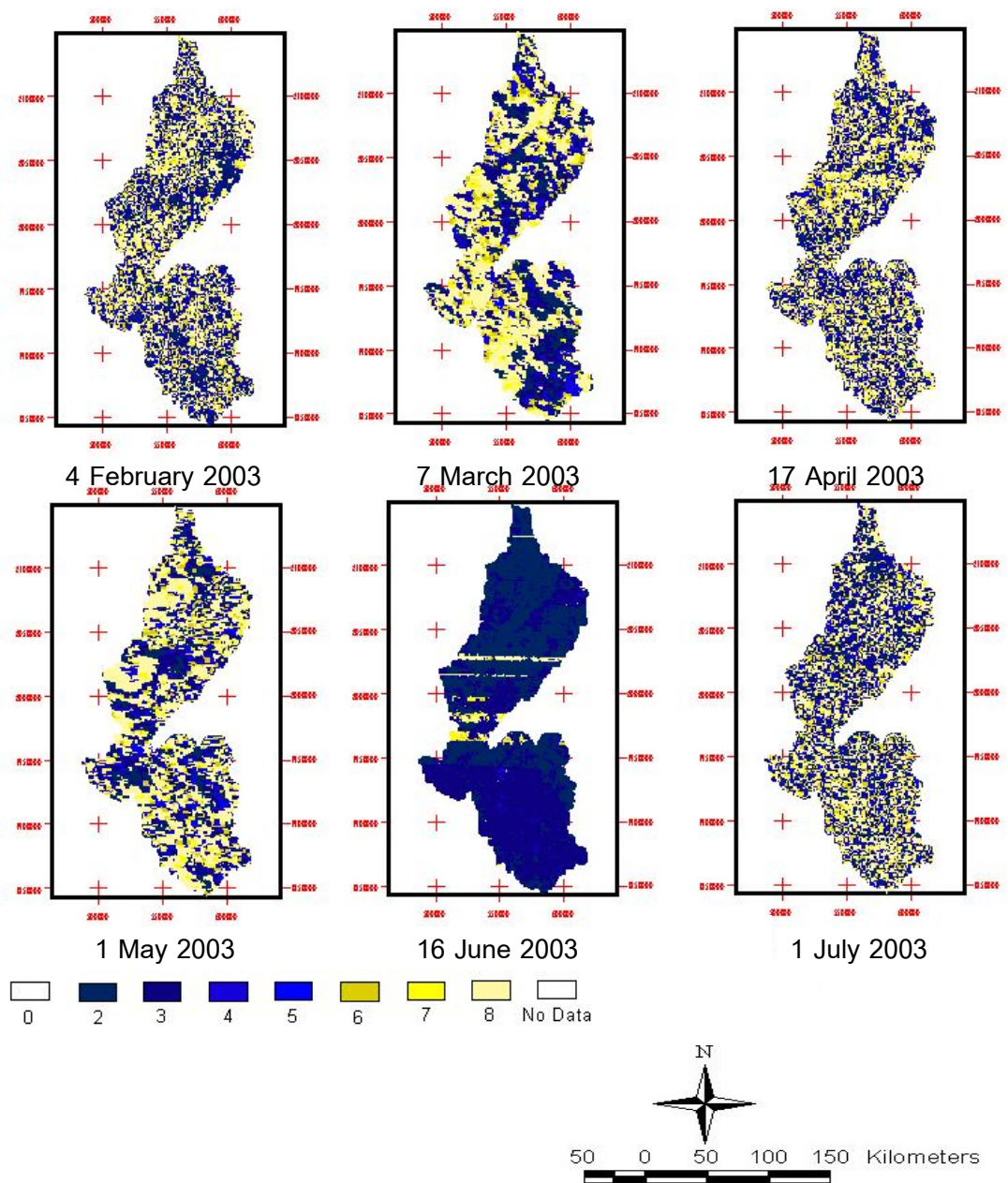


Figure 21 Surface albedo in Sukhothai paddy field and Lampang teak plantation during February 2003-July 2003.



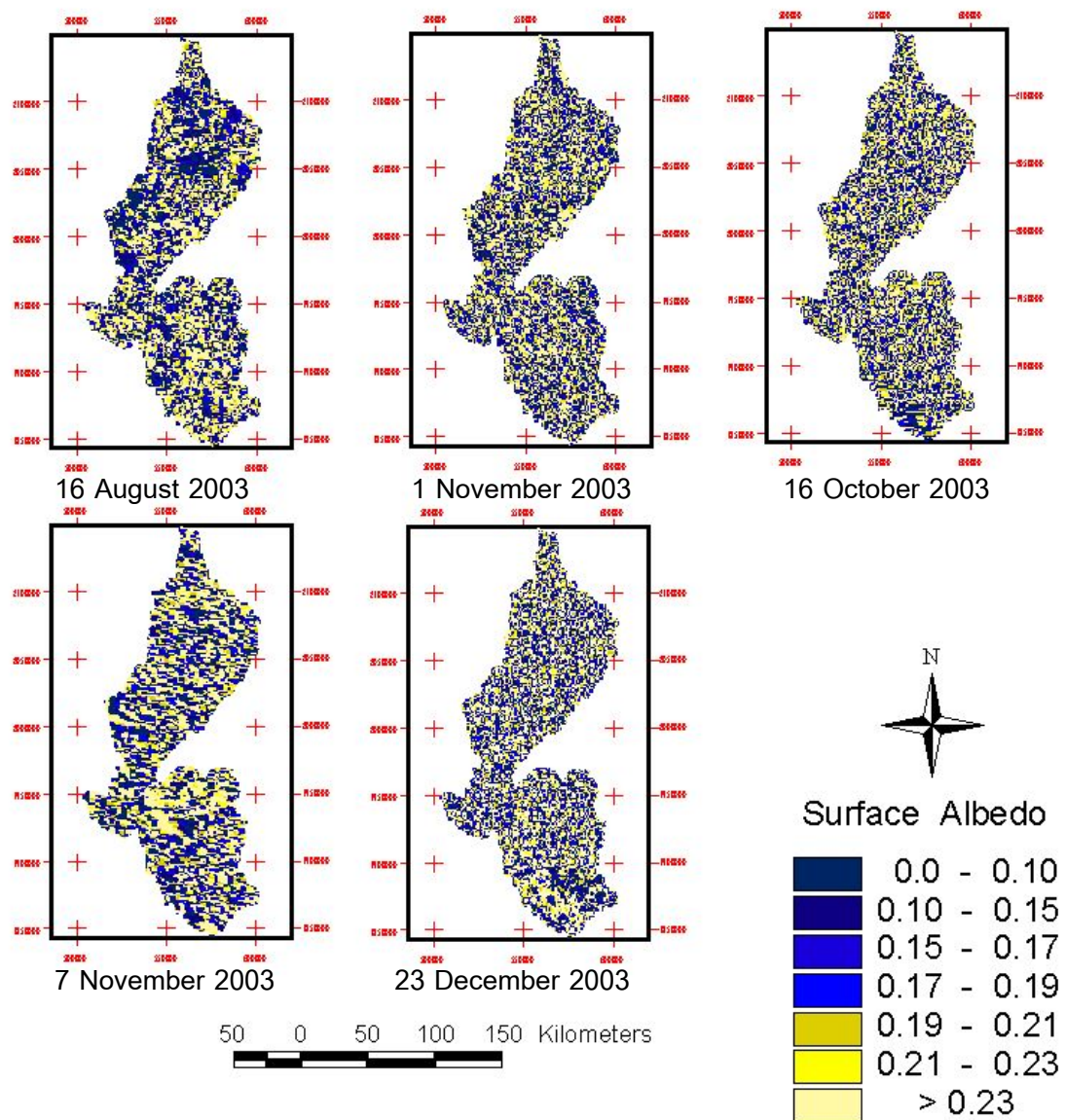
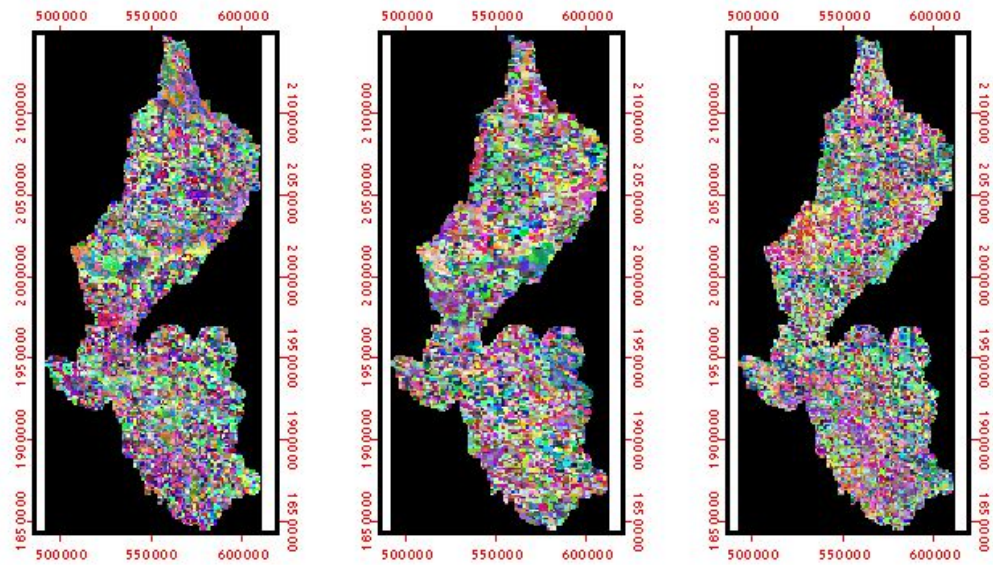


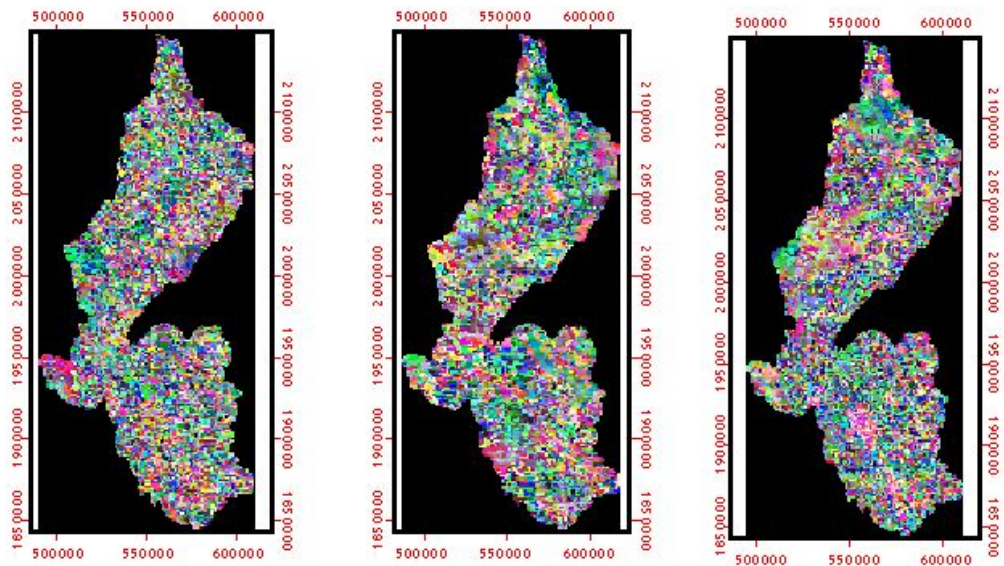
Figure 22 Surface albedo in Sukhothai paddy field and Lampang teak plantation during August 2003-December 2003.



22 August 2002

15 September 2002

5 October 2002



20 November 2002

1 December 2002

16 January 2003

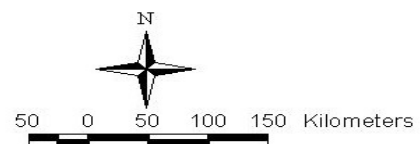


Figure 24 Evaporative fraction (EF) in Sukhothai paddy field and Lampang teak plantation during August 2002-January 2003.



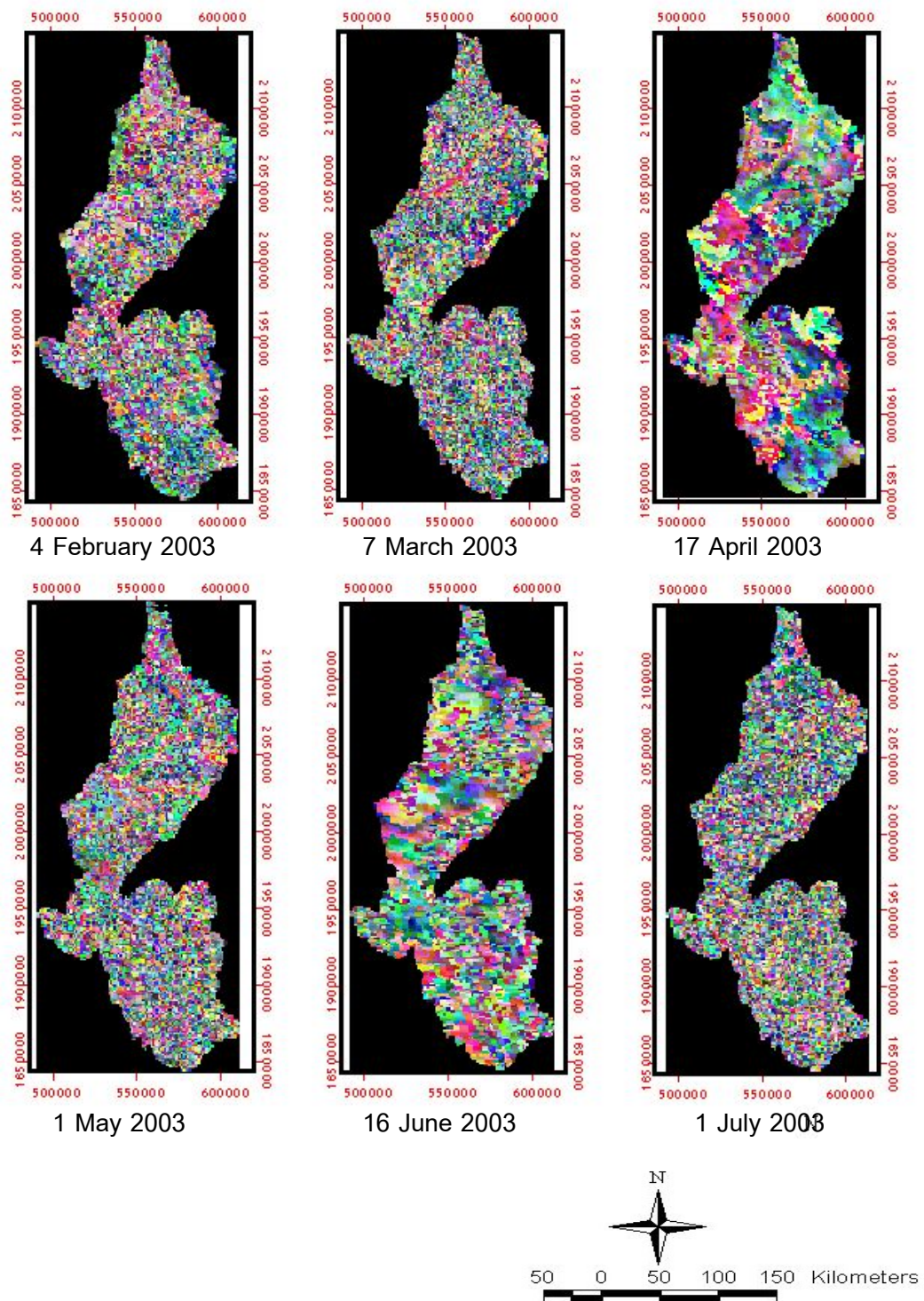


Figure 25 Evaporative fraction (EF) in Sukhothai paddy field and Lampang teak plantation during February 2003-July 2003.



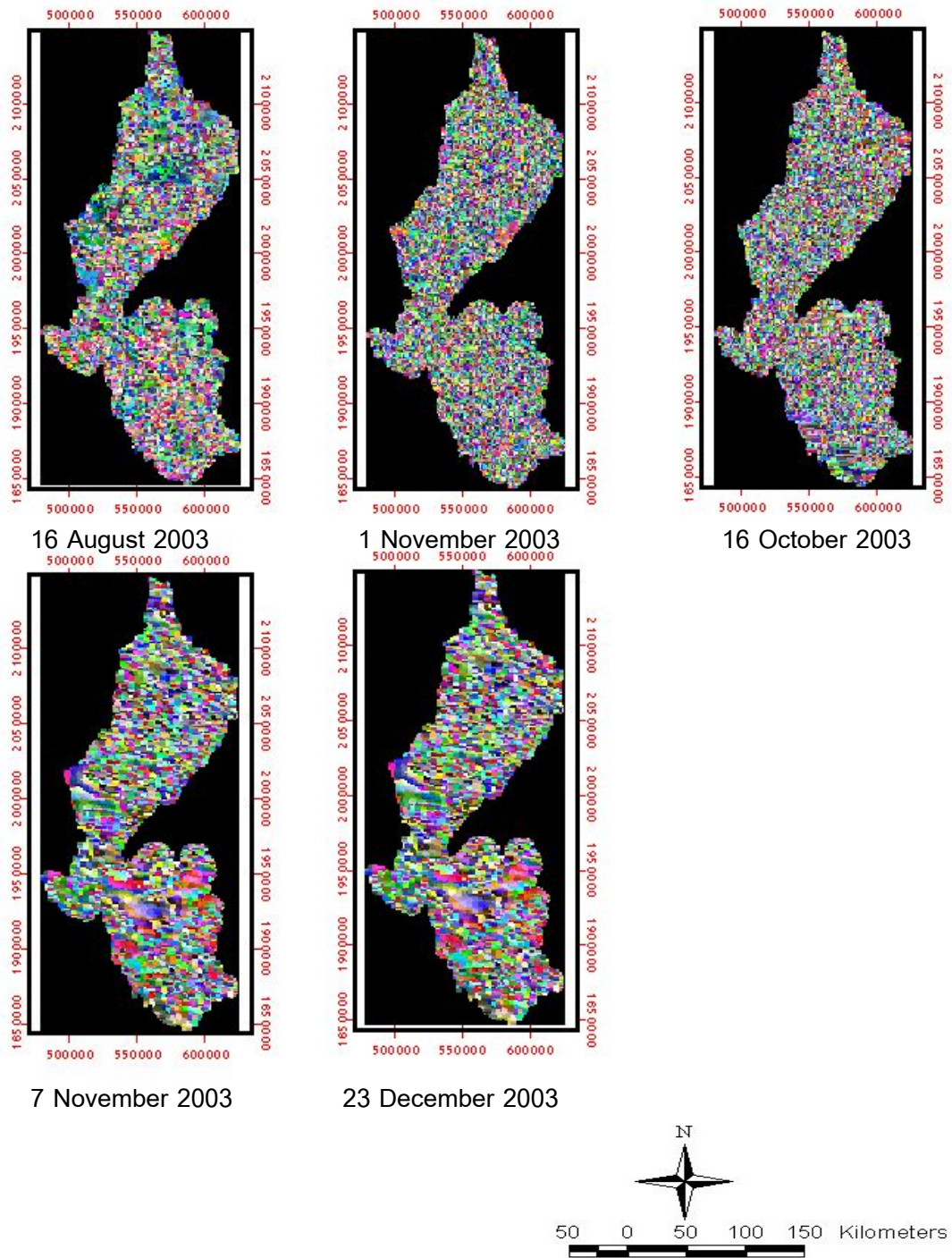


Figure 26. Evaporative fraction (EF) in Sukhothai paddy field and Lampang teak plantation during August 2003–December 2003.

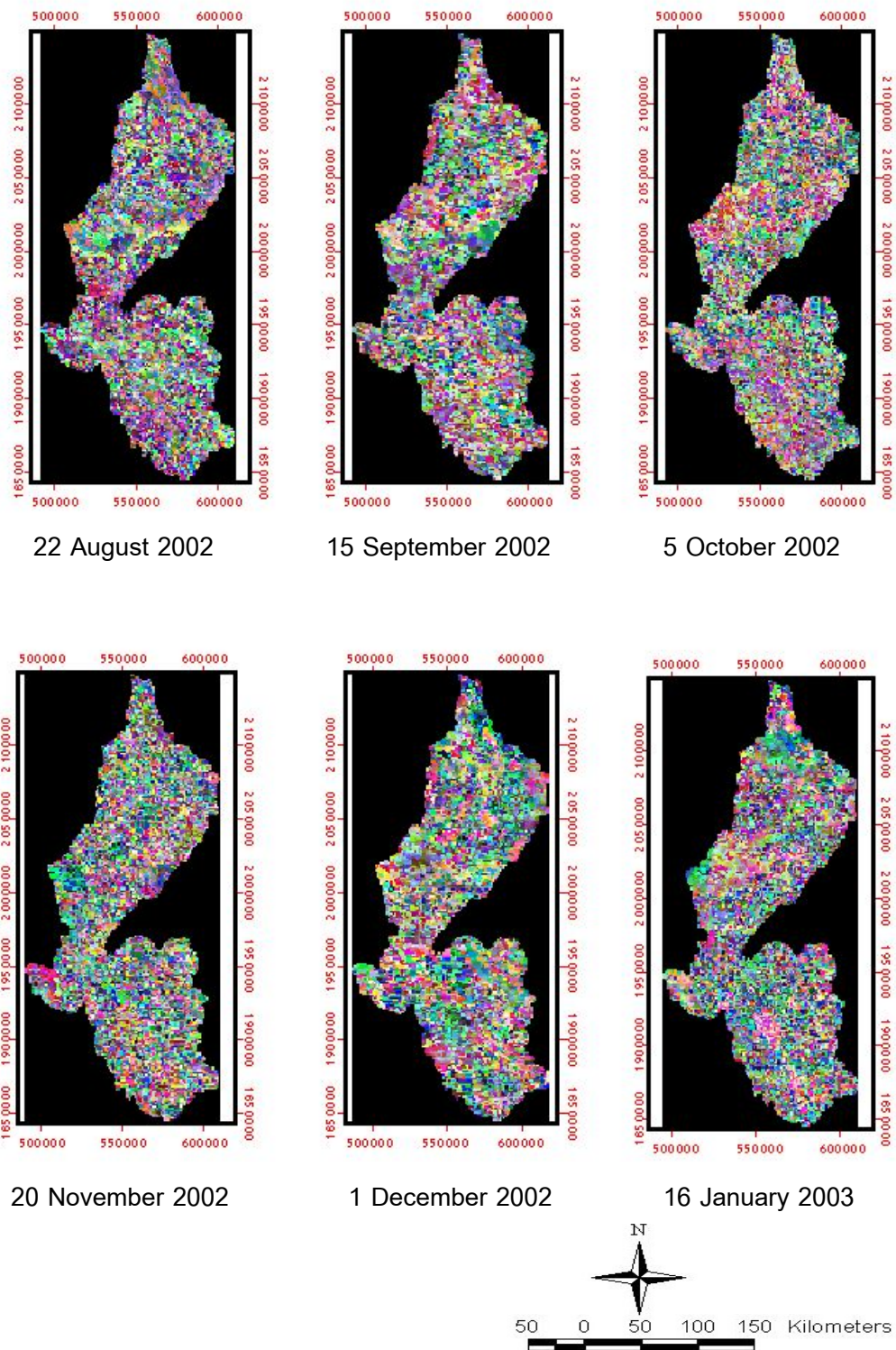


Figure 27 Estimation evapotranspiration (ETest) in Sukhothai paddy field and Lampang teak plantation during August 2002-January 2003.



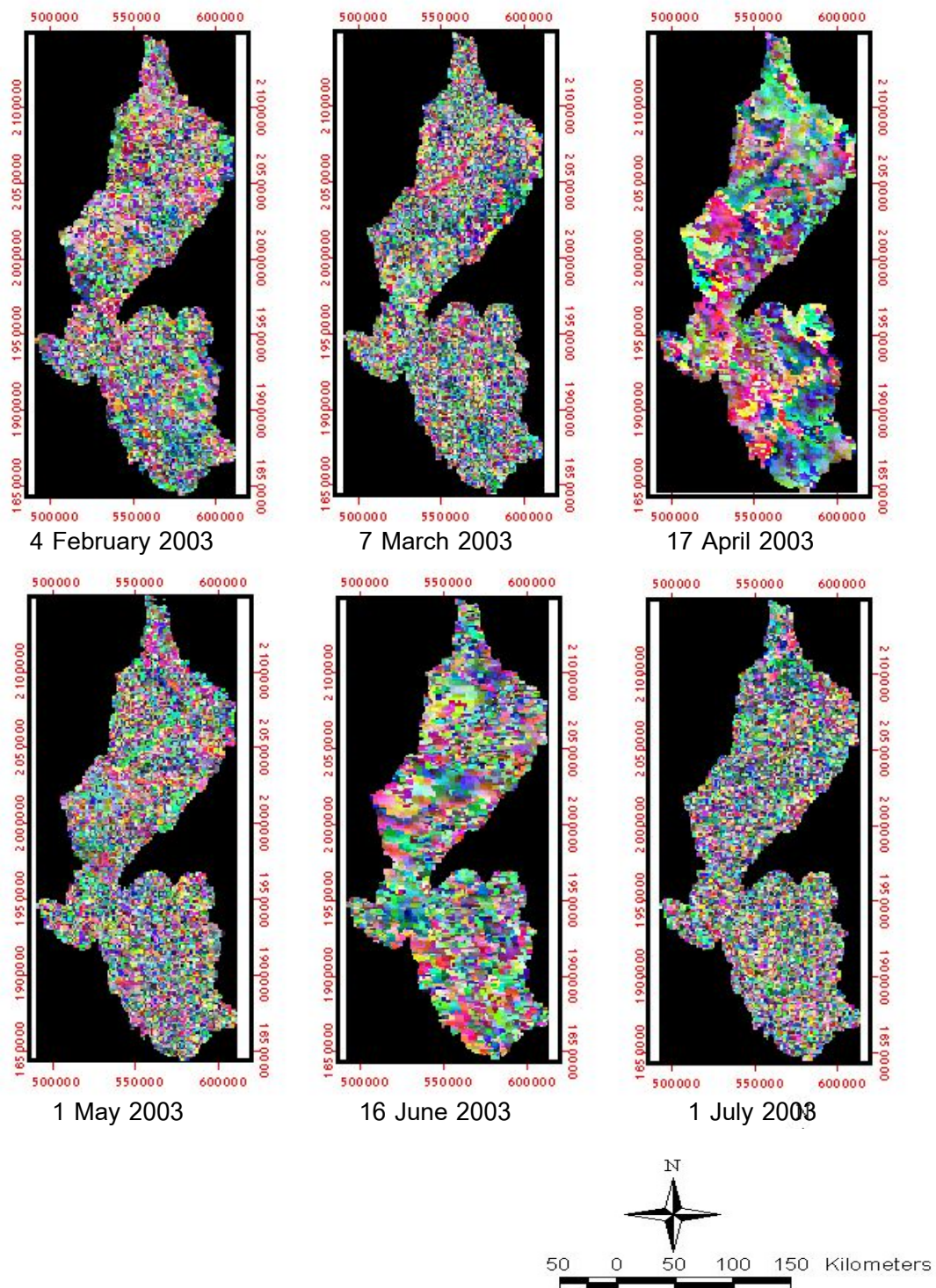


Figure 28 Estimation evapotranspiration (ETest) in Sukhothai paddy field and Lampang teak plantation during February 2003-July 2003.



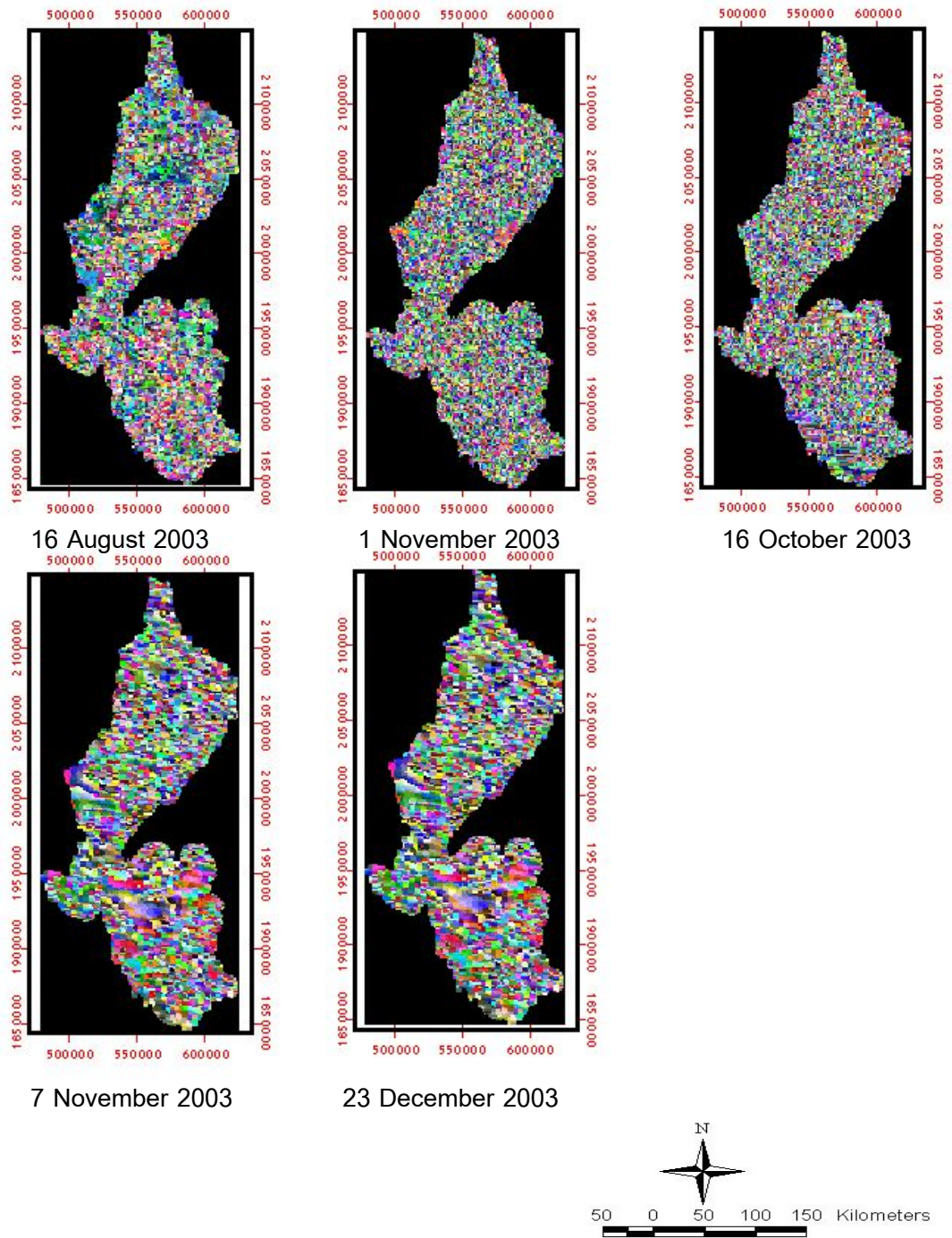


Figure 29 Estimation evapotranspiration (ETest) in Sukhothai paddy field and Lampang teak plantation during August 2003-December 2003.