

APPENDIX

2-D maps of affinity purified lectin by LC-MS/MS

Maps were analyzed with ImageMaster 2-D Platinum software. A comparison was made between the affinity purified lectin after post injection with *V. harveyi* at 1, 15 and 120 min (green labeled spots (1-8)).

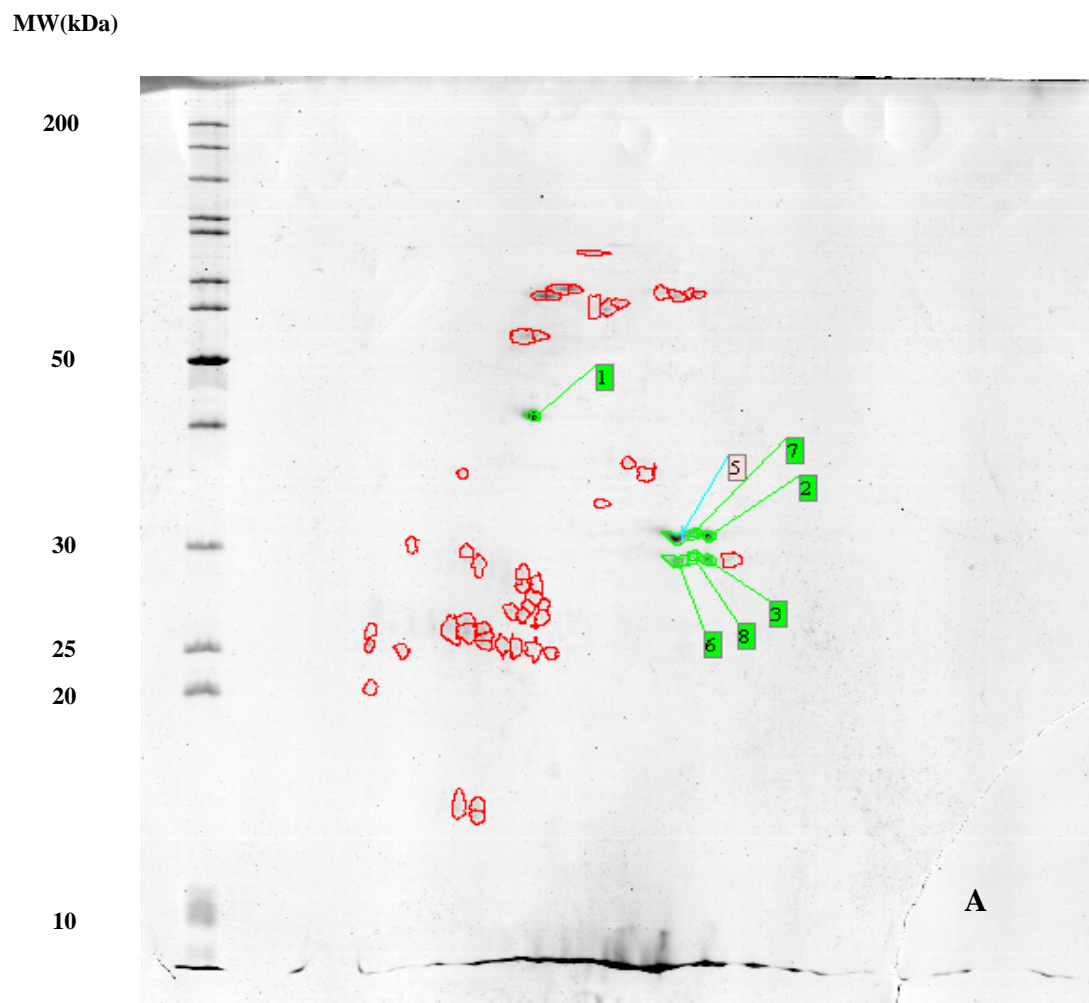


Figure 1 2-D maps of colloidal Coomassie brilliant blue G-250 stained proteins of the affinity purified lectin after post injection with *V. harveyi* at 1 min (A) Green and red label spots are responded to *V. harveyi* infection.

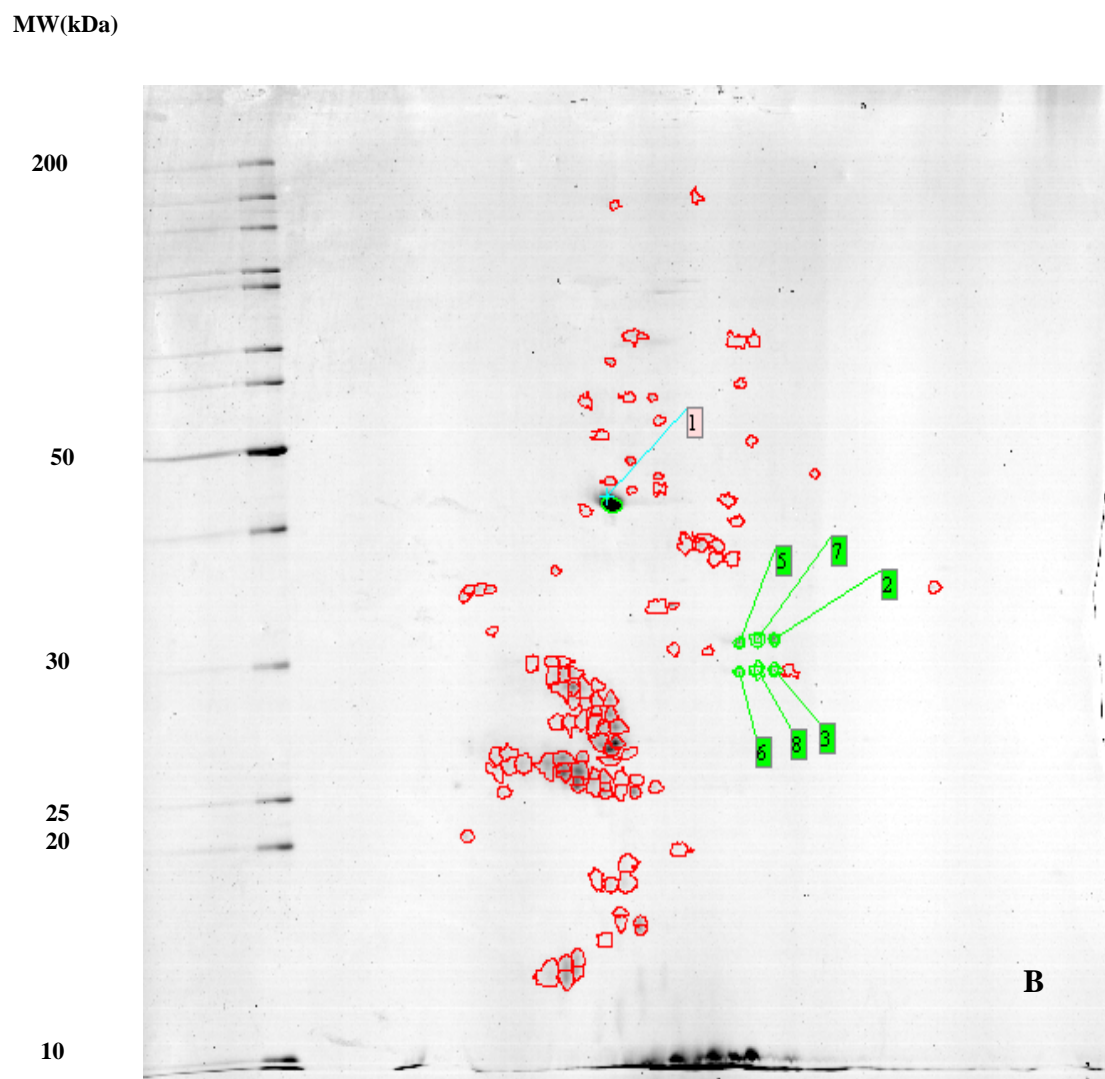


Figure 2 2-D maps of colloidal Coomassie brilliant blue G-250 stained proteins of the affinity purified lectin after post injection with *V. harveyi* at 15 min (B). Green and red label spots are responded to *V. harveyi* infection.

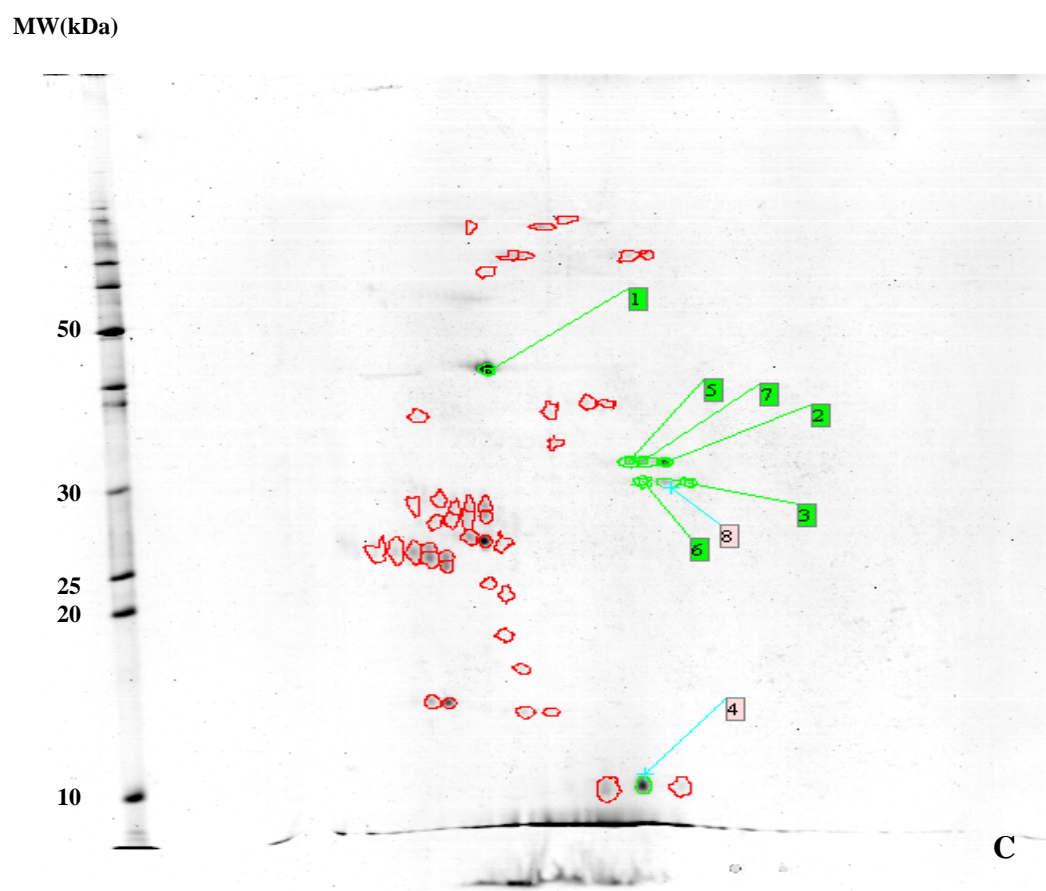


Figure 3 2-D maps of colloidal Coomassie brilliant blue G-250 stained proteins of the affinity purified lectin after post injection with *V. harveyi* at 120 min (C). Green and red label spots are responded to *V. harveyi* infection.