

ภาคผนวก ข

แนวทางของคู่มือคำแนะนำการบริหารกองเรือและการประเมินตนเอง

TMSA - Tanker Management System Assessment

PART TWO the 12 elements of the TMSA guidelines

ELEMENT 1

Management, leadership and accountability

Main objective

Provide direction and clearly define responsibilities and accountabilities at all levels within the organisation.

An effective quality-management system requires commitment at the highest levels of the organisation and clear definitions of the roles and responsibilities for everyone involved in its administration. Element 1 establishes these principles as part of the management system.

Safety and environmental excellence

The concepts of safety and environmental excellence should be understood at all levels in the organisation and actively promoted through leadership and the disciplined use of documented management systems.

The quality-management system

Ship operators should establish and maintain a documented quality-management system that can accomplish the stated fleet management policies and objectives. In addition, all managers should be held accountable for achieving the targets and objectives established for them.

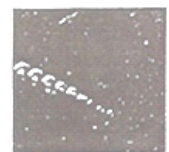
Management activities that require instructions and procedures should be systematically identified. Where instructions and procedures are required, they should be suited to the purpose and easy to understand and follow. Where appropriate, these instructions should be developed in consultation with those who will be affected by them or who have to apply them.

The management system must promote feedback and appropriate responses within ship operators' companies. It must also provide information on incidents, ship inspections fleet performance serious near misses and lessons learnt. This information should be made available to those who charter vessels



Roles and responsibilities

Ship operators should ensure that management roles and individual responsibilities are clearly established, assigned, understood and documented.



Communication

Ship operators should establish and maintain effective communication procedures between shore-based management and the fleet. This should include communication of the quality-management system to all areas within the company

