

Appendix F
The Comparison of Spatial Pattern between Observation Data of
Exp03 and Exp05 on 10th September 2011

The comparison of spatial pattern between observation data of Exp03 on 10th September 2011

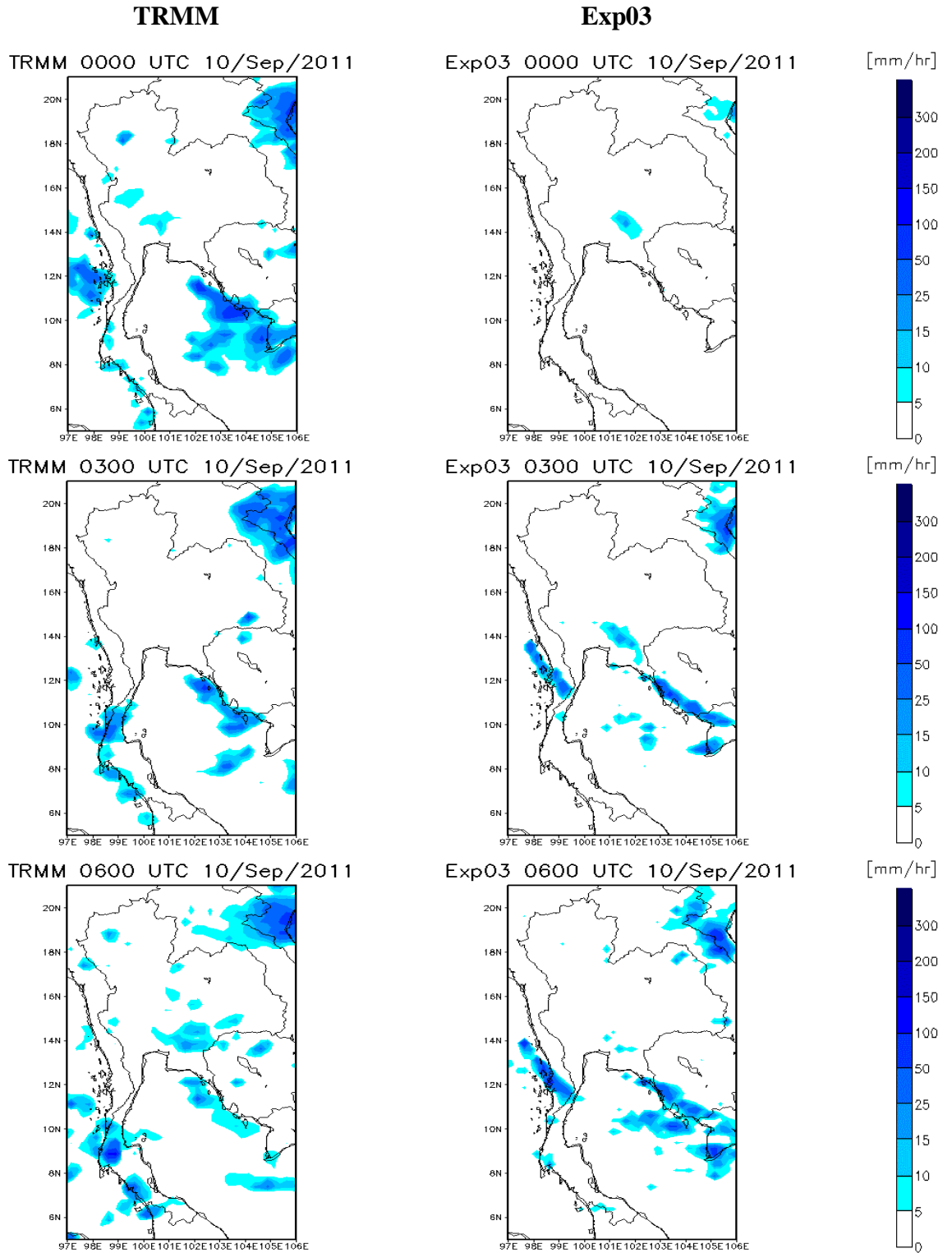


Figure F01 The comparison of rainfall distribution pattern between observation data of Exp03 during 0000 UTC to 0600 UTC 10 September 2011

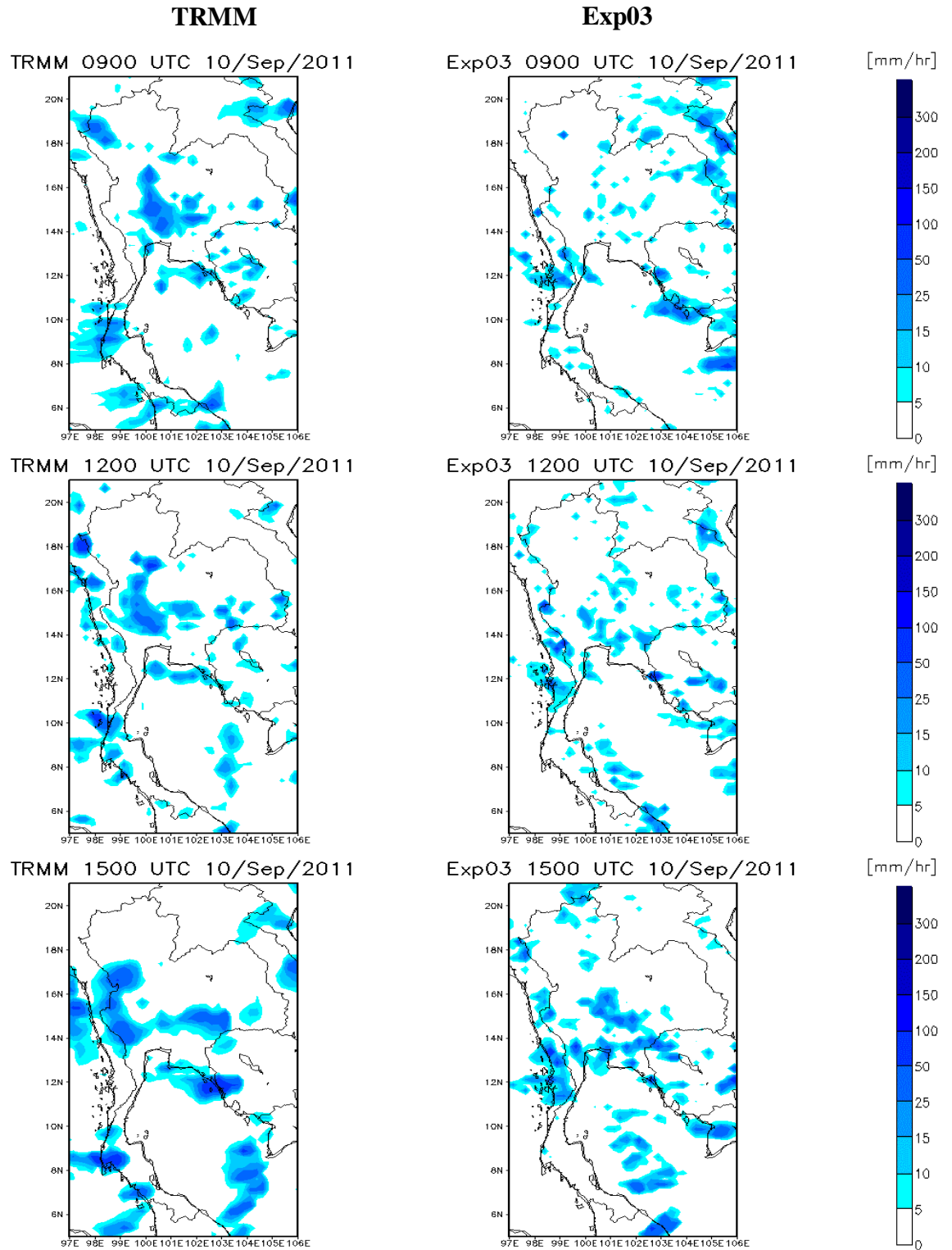


Figure F02 The comparison of rainfall distribution pattern between observation data of Exp03 during 0900 UTC to 1500 UTC 10 September 2011

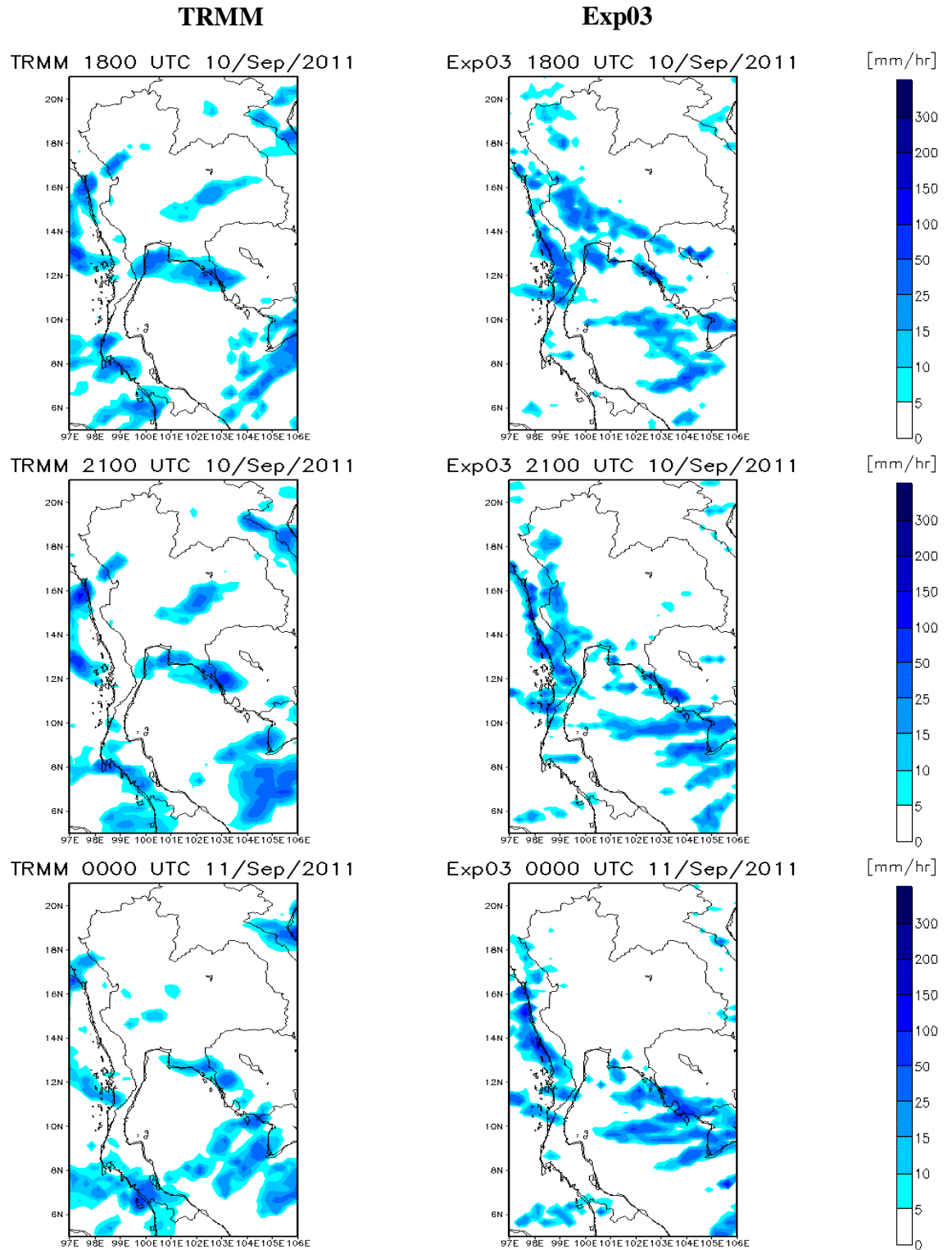


Figure F03. The comparison of rainfall distribution pattern between observation data of Exp03 during 1800 UTC 10 September 2011 to 0000 UTC 11 September 2011

The comparison of spatial pattern between observation data of EXP05 on 10th September 2011

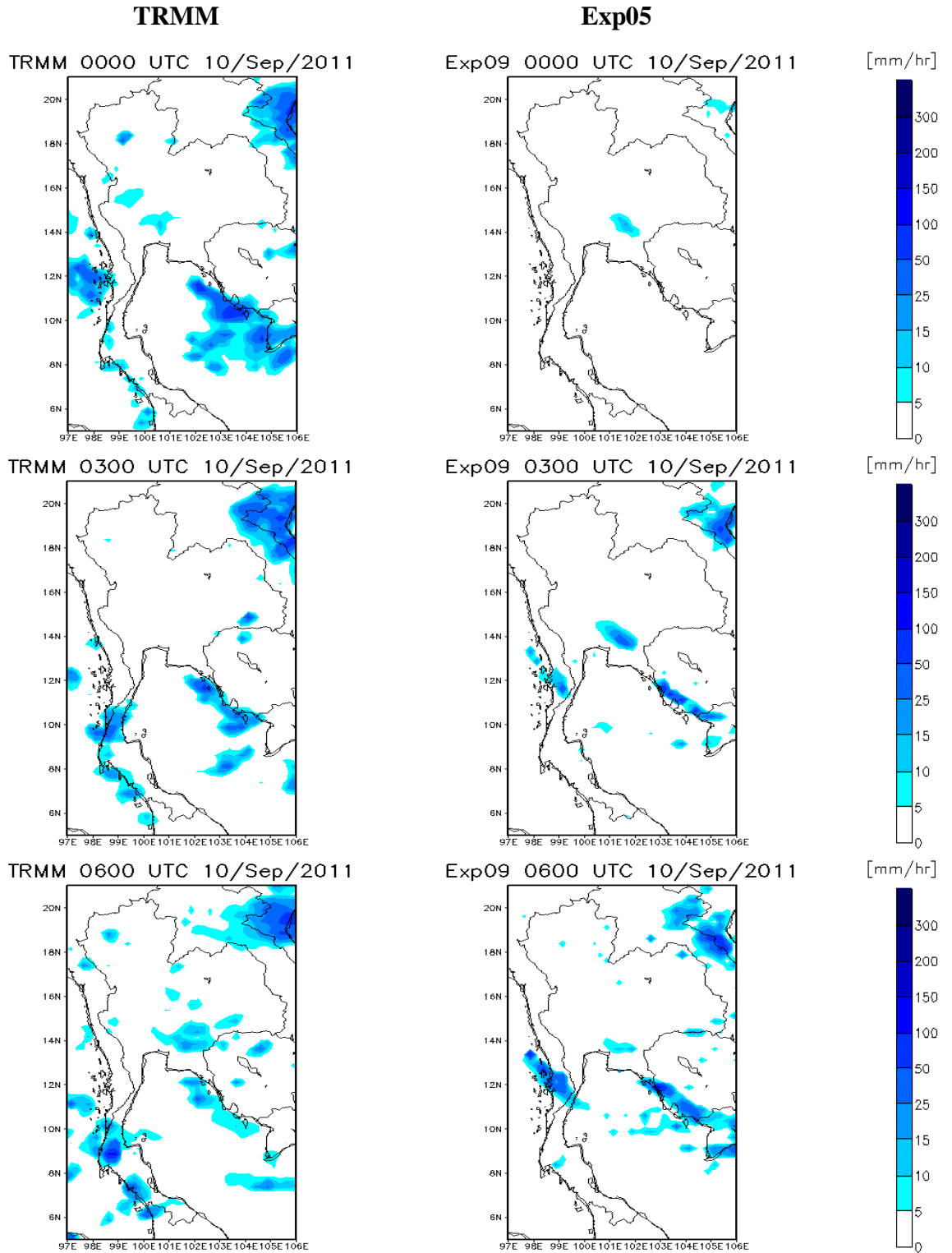


Figure F04. The comparison of rainfall distribution pattern between observation data of Exp09 during 0000 UTC to 0600 UTC 10 September 2011

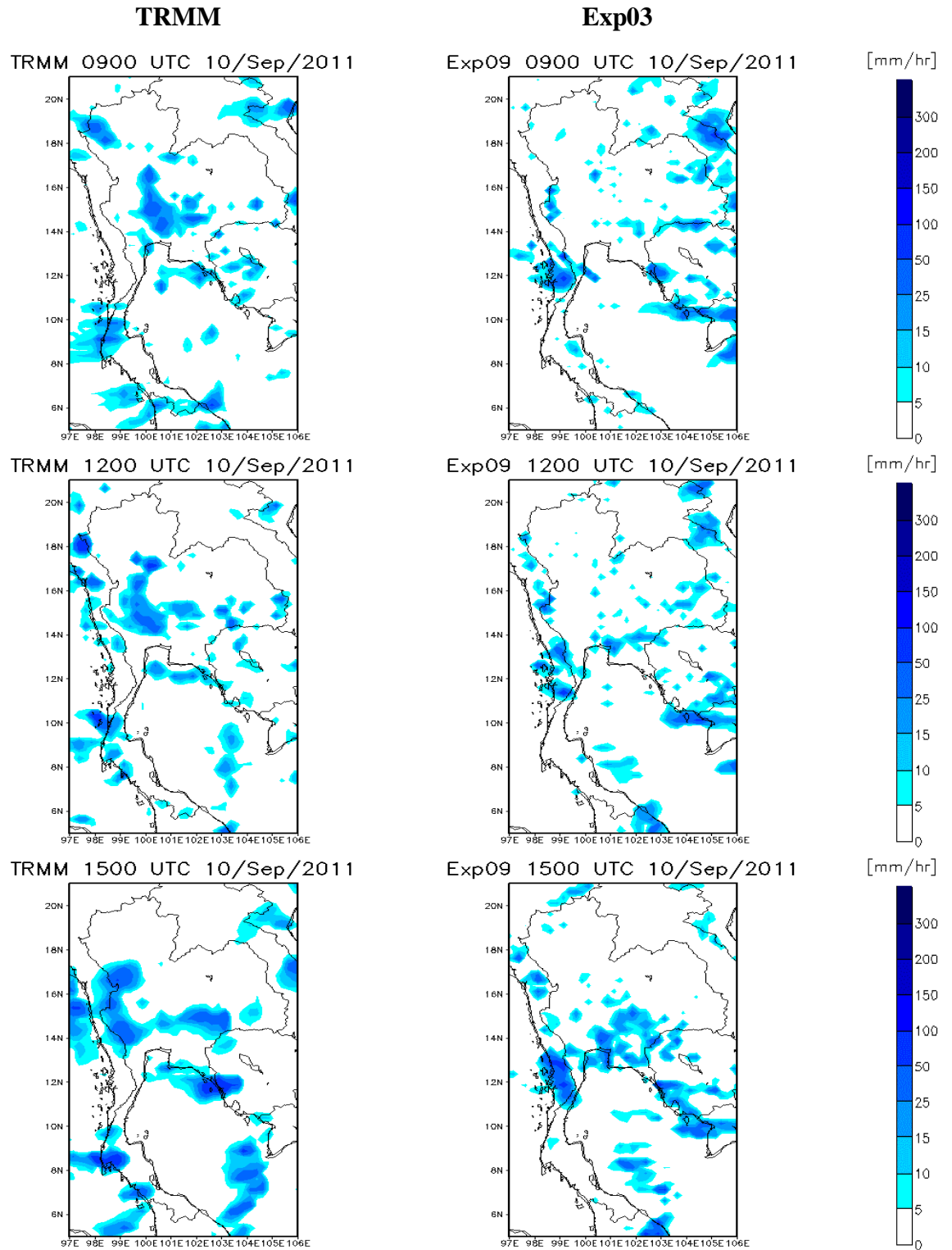


Figure F05. The comparison of rainfall distribution pattern between observation data of Exp09 during 0900 UTC to 1500 UTC 10 September 2011

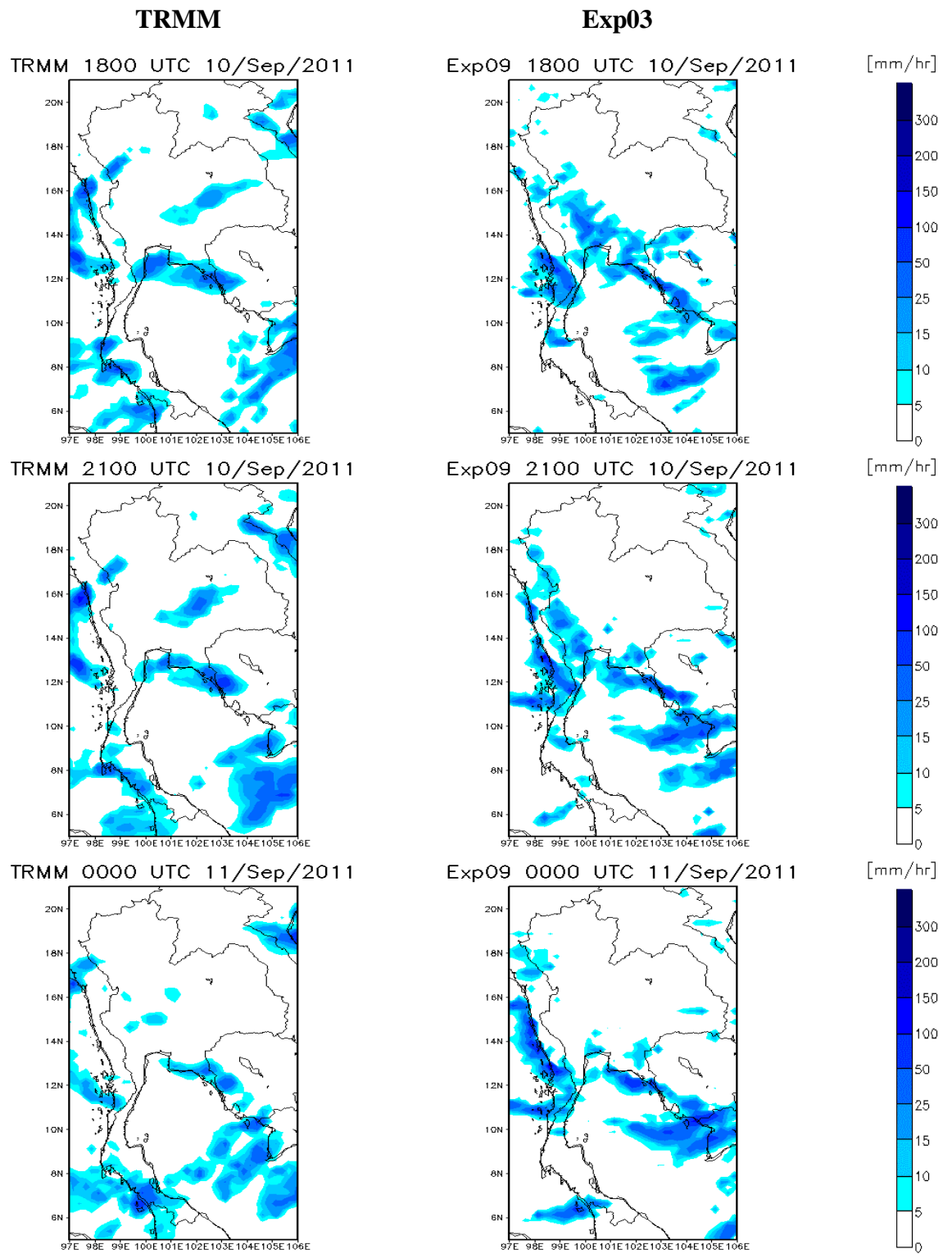


Figure F06. The comparison of rainfall distribution pattern between observation data of Exp09 during 1800 UTC 10 September 2011 to 0000 UTC 11 September 2011