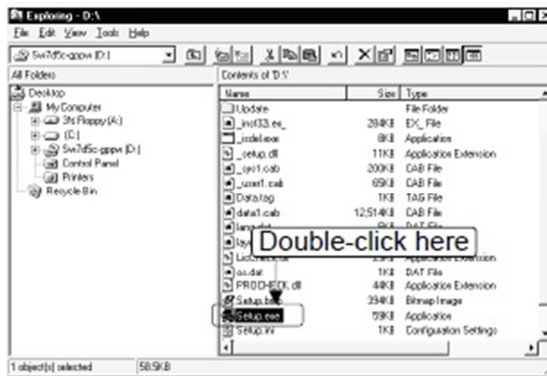
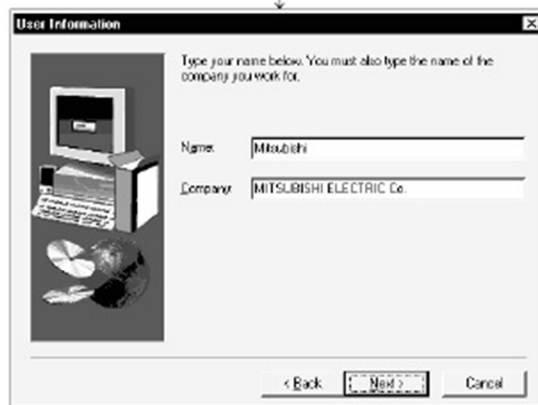


APPENDIX A

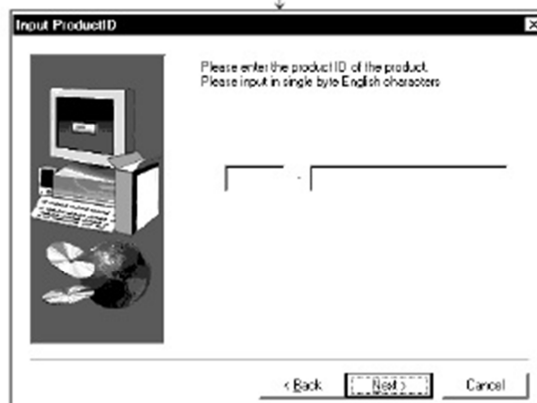
Installing the GX developer



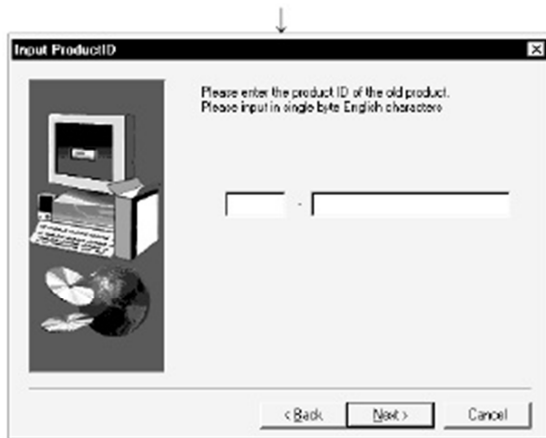
- 1) Start Windows Explorer and click the drive in which the disk has been inserted. Double-click "Setup.exe". On Windows Explorer, choose [Start]-[Programs]-[Windows Explorer].



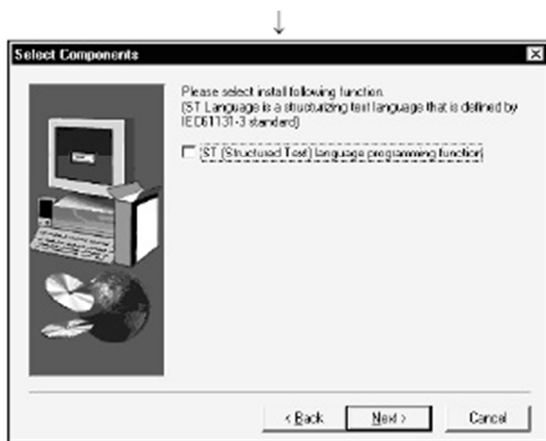
- 2) Type the name and company, and click Next. As the confirmation dialog box appears, perform operation in accordance with the message



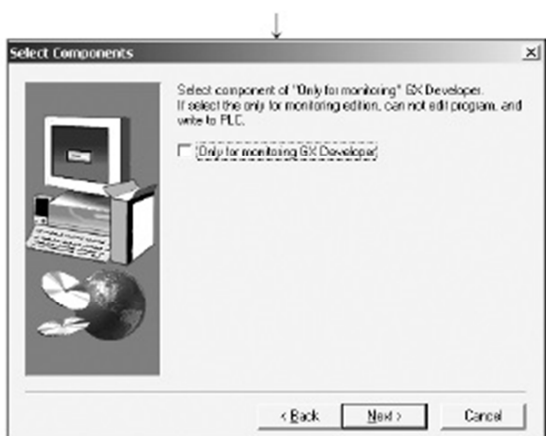
- 3) Type the product ID and click Next. The product ID is described in "Software User Registration Card" included with the product.



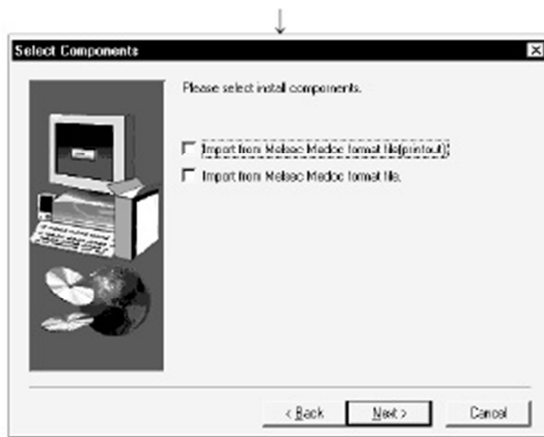
- 4) When the product is to be updated, the screen shown on the left appears. Type the product ID of the older product and click Next. The product ID of the older version is described in "Software User Registration Card" included with the product. When newly installing the product, the left screen does not appear.



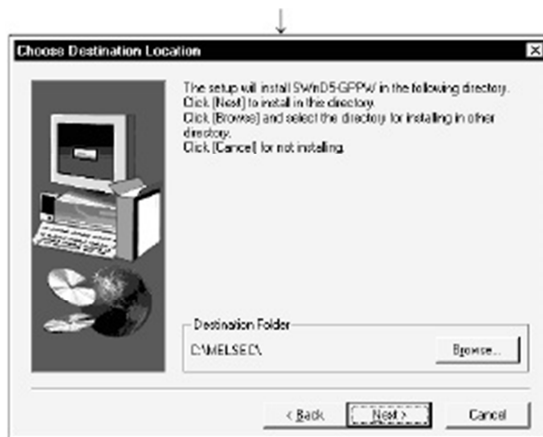
- 5) When using structured text (ST) language, check the corresponding check box, and click Next. When structured text (ST) language is not required, just click Next.



- 6) When using all functions, click Next. When installing monitoring-only GX Developer, turn on the check box and click Next. Installing the product as monitoring-only GX Developer prevents on-the-spot editing, accidental changes, and so on. (This disables such functions as write to PLC and PLC data deletion.) Refer to the GX Developer Operating Manual for the functions available for monitoring-only GX Developer.



- 7) When you want to import to GX Developer the data created with MELSEC MEDOC or the data output as a printout data file, check the check box and click Next.



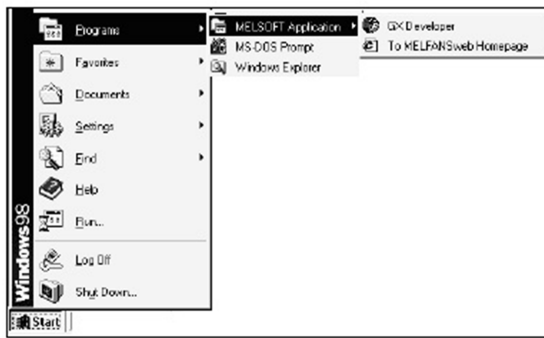
- 8) Specify the installation Destination Folder. If the installation Destination Folder displayed is correct, click Next. If you change the destination folder, click Browse and specify a new drive and folder.



- 9) This completes installation. Click OK .



- 10) Windows R must be rebooted if the screen shown on the left appears. Installation

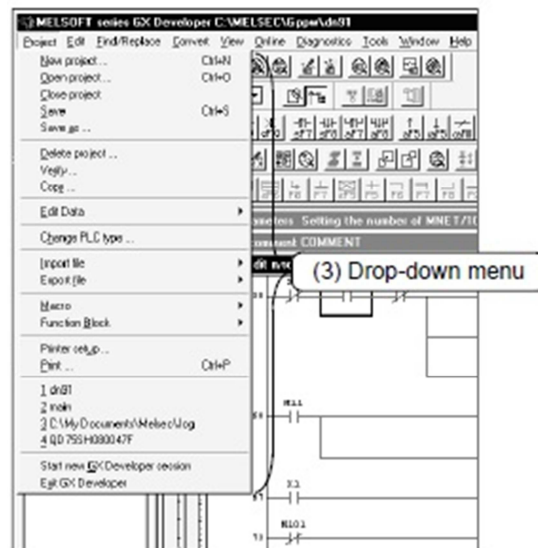
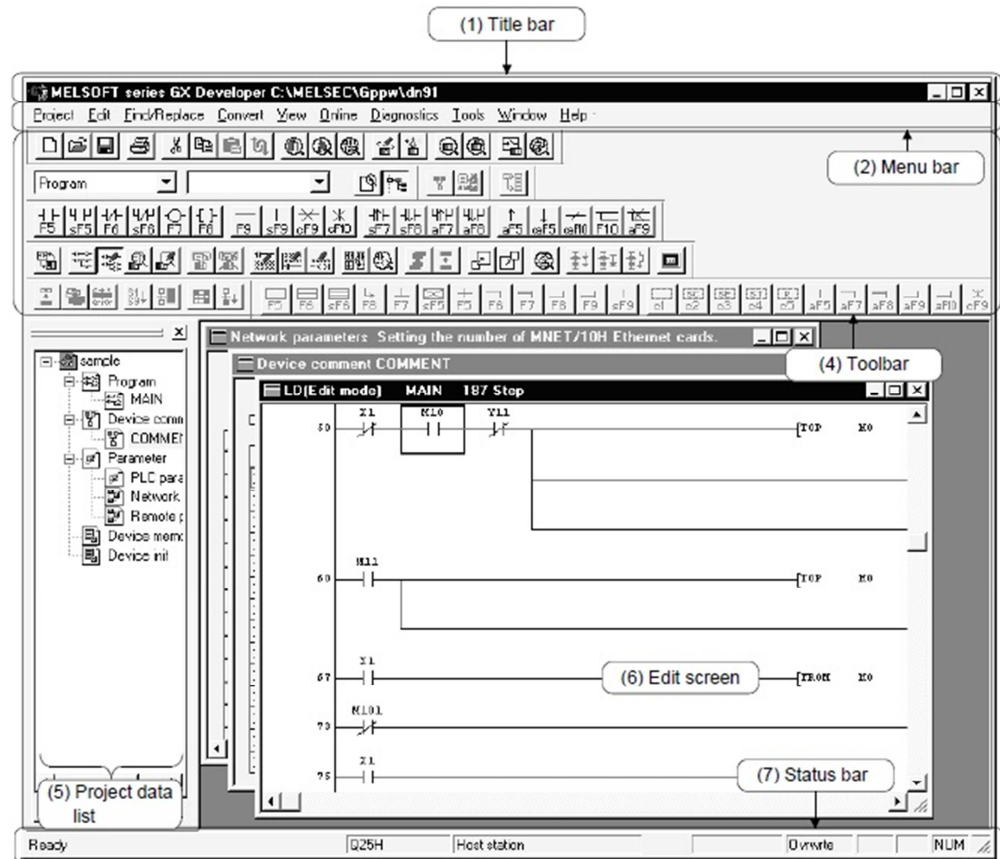


11) Installation of the product registers the icon as shown below.

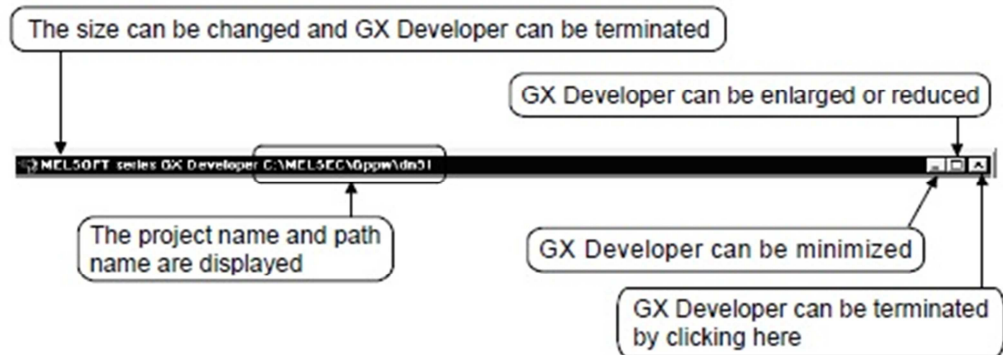
APPENDIX B

GX Developer Edit Window and Various Tools

This section describes the GX Developer window configuration and various tools



- 1) Title bar
Indicates the name of the open project

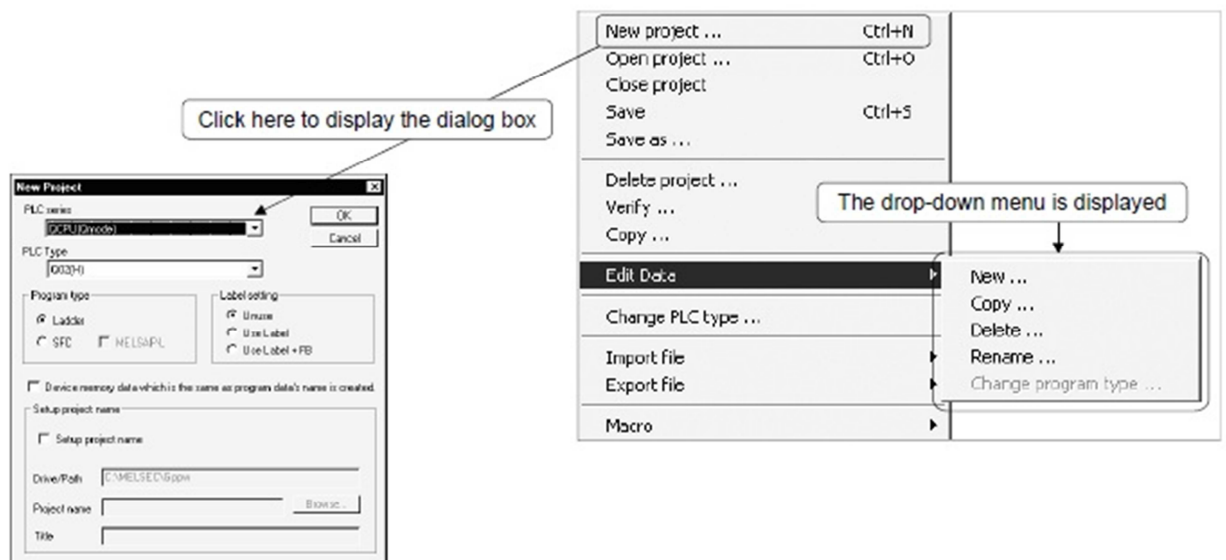


To close multiple windows at once, select [Windows] [Close all windows].

- 2) Menu bar
Displays the names of GX Developer menus. If a desired menu is selected, the drop-down menu is displayed so that various functions can be used.



- 3) Drop-down menu
Displays the names of GX Developer functions. When a right-pointing arrow is displayed at the rightmost end of the menu item, the drop-down menu of the selected item is displayed. When " ..." is displayed next to a function name, a setup dialog box is displayed by selecting the item.



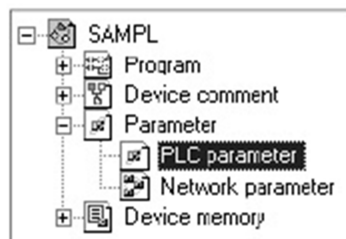
4) Toolbar

Displays the buttons for the frequently used functions assigned on the menu bar.



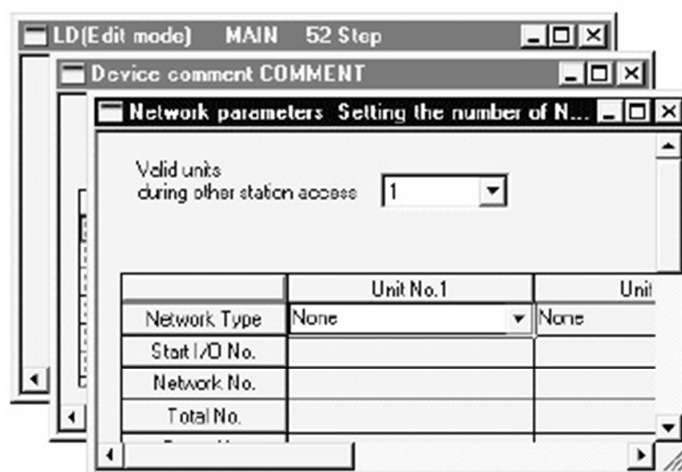
5) Project data list

Lists project data by class. The circuit creation dialog box and other dialog boxes can be directly called.

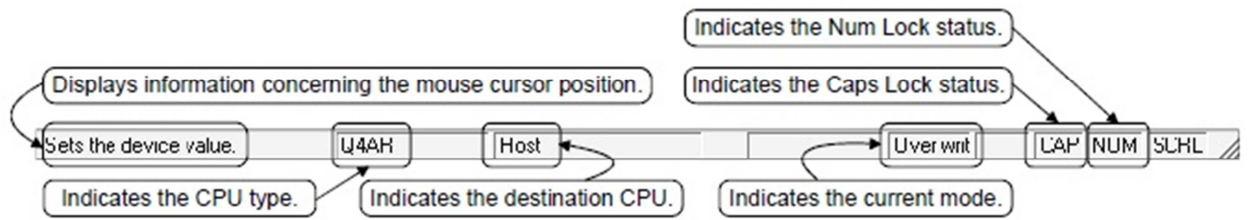


6) Edit window

Displays the circuit creation dialog box and comment creation dialog box to make settings for circuits, comments, and parameters.



- 7) Status bar
 Displays the GX Developer status information.



- 8) Displaying a handy menu

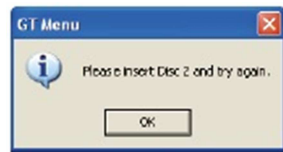
Work efficiency can be increased by clicking the right mouse button to display a menu of items related to the current work. When you are editing a circuit or comment, you can select [Cut], [Copy], [Paste] or [Find Device] from this menu.

APPENDIX C

Installing the GT designer 2

When installing/viewing the data of Disc 2 from Disc 1 or that of Disc 1 from Disc 2 The same menu screen is displayed even if either Disc 1 or Disc 2 is inserted into the CD drive of the PC. When the data to be installed/ viewed is not stored in the CD-ROM in the CD driver, the following message is displayed. In the case, insert the CD-ROM displayed in the message window. (When the appropriate CD-ROM is inserted, the menu screen is displayed again.)

Example: When inserting Disc 1 into the CD drive to view below



PC

1) Insert Disc 1 into the CD drive of the



2) Click the software to be installed.

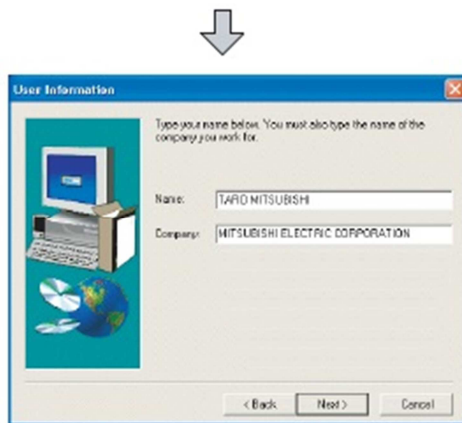


3) When "GT SoftGOT Menu" has been selected, the screen on the left is displayed. "GT SoftGOT1000 Installation" GT SoftGOT1000 will be installed. "GT SoftGOT2 Installation" GT SoftGOT2 will be installed. "System Driver Installation" System Driver driver will be installed. When the PC CPU module is used, System Driver does not need to be installed. Observe the following points when installing System Driver.

- Before installing System Driver, do not mount the license key (USB port) to the PC.
- During System Driver installation, do not mount the license key (USB port) to the PC.



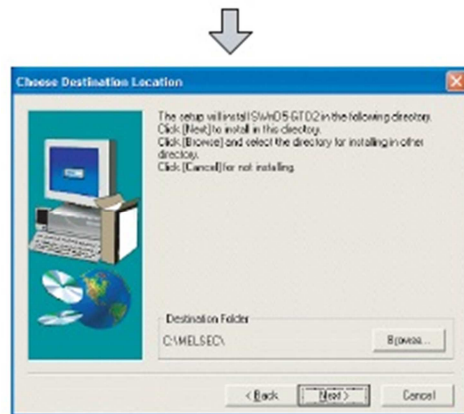
4) When "Tools" has been selected, the screen on the left is displayed. "MES DB Connection Service installation" MES DB Connection Service will be installed. "Document Converter Installation" Document Converter will be installed.



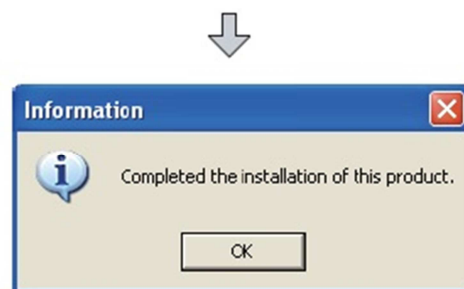
5) Input your name and your company name, and Click Next> the button. As the confirmation dialog box is displayed, perform operation according to the message.



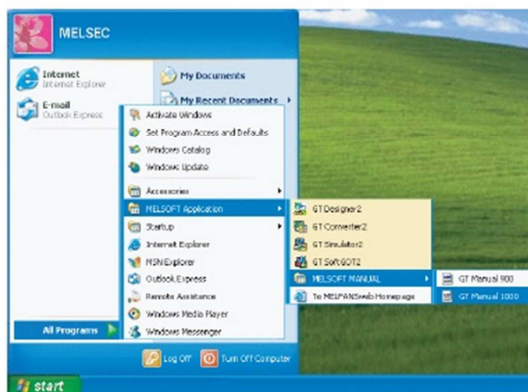
6) When "GT Designer2 installation", "GT Simulator Installation", "GT SoftGOT2 installation" or "MES DB Connection Service installation" has been selected, the screen on the left is displayed. Input the product ID of the product and click the Next> button. The product ID is indicated in the software registration form packed with the product.



7) Specify the installation destination folder. The installation destination folder defaults to "C:\MELSEC". When the default is acceptable, click the Next> button. To change the default, click the Browse button and specify a new drive and folder.



8) The installation starts. When the installation is completed, the screen shown on the left is displayed. Click the OK button. If the Restart screen is displayed, restart Windows®.



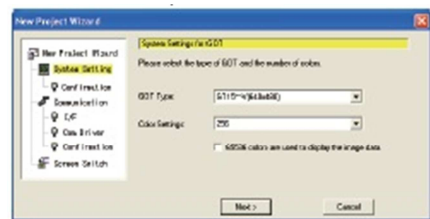
9) When GT Designer2, GT Simulator2 and GT SoftGOT2 are installed, icons are registered as shown below.

APPENDIX D

Settings before Screen Creation

Create a Project

First, create a new project.



1) The screen on the left is displayed when GT

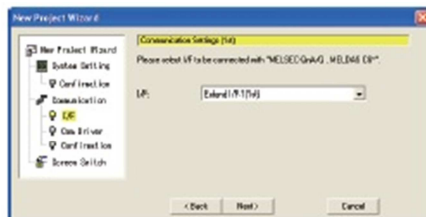
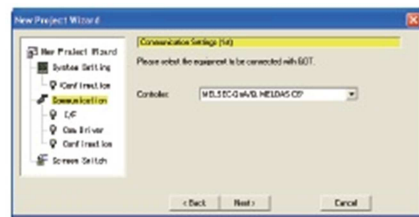
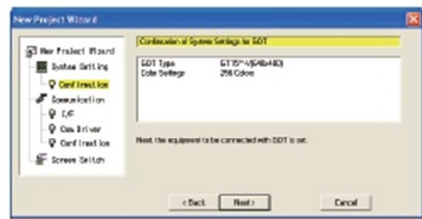
Designer2 is started. Click the New button to create a new screen.

2) The screen on the left (Start New Project Wizard) is displayed, so click the Next> button. *If the "Show Wizard on New Project" box is unchecked, the wizard will not appear the next time a new project is created.

3) The screen on the left (System Settings for GOT) is displayed, so select the GOT type to be used and color setting. After the selection is made, click the Next> button.

Settings

GOT Type: GT15** -V (640 x 480), Color Settings: 256 color

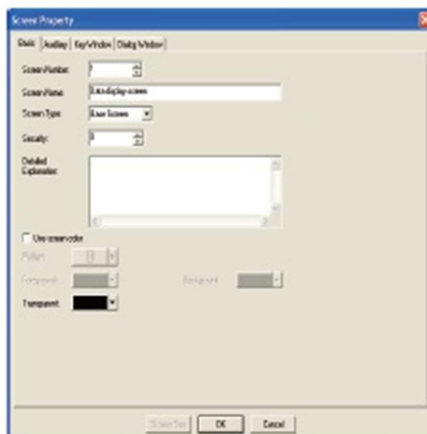
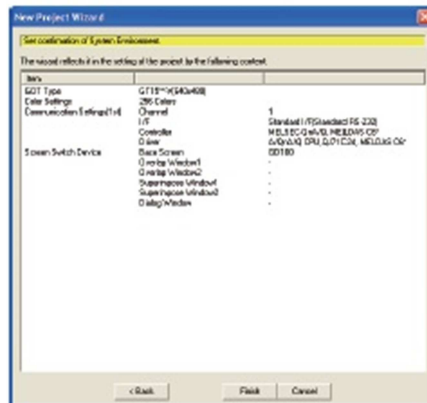
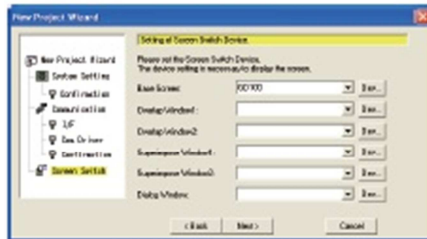
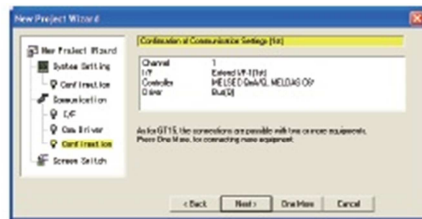


4) The screen on the left (Confirmation of System Settings for GOT) is displayed, so click the Next> button after confirming the settings.

5) The screen on the left (Communication Settings (1st)) is displayed, so select the equipment to be connected to GOT. After the selection is made, click the Next> button. Settings Controller: MELSEC-QnA/Q, MELDAS C6*

6) The screen on the left (Communication Settings (1st)) is displayed, so select the I/F to be connected with MELSEC-QnA/Q, MELDAS C6*. After the selection is made, click the Next> button. Settings I/F: Extended I/F

7) The screen on the left (Communication Settings (1st)) is displayed, so select the communication driver to be connected with MELSEC-QnA/Q, MELDAS C6*. After the selection is made, click the Detail button and select the Stage No. and Slot No. After the selection is made, click the Next> button. Settings Communication Driver: Bus (Q) Details Stage No.: 1 Slot No.: 0



8) The screen on the left (Confirmation of Communication Settings (1st)) is displayed, click the Next> button after confirming the settings.

9) The screen on the left (Setting of Screen Switch Device) is displayed, set the Switch Device for the Base Screen. After the specification is made, click the Next> button. Settings Base Screen Screen Switch Device: GD100

10) The screen on the left (Set Confirmation of System Environment) is displayed, so click the Finish button after confirming the settings.

11) The Screen Property dialog box is displayed, so enter the screen name.

12) When the OK button is clicked, Base Screen 1 is created. Settings Screen Name: Data display screen