

APPENDIX A
Fundamental Frequency Trajectories of Five Thai Tones

A. Fundamental Frequency Trajectories of Five Thai Tones

In tonal languages, each tone conveys a different meaning. Therefore, tone recognition is an important part of tonal speech recognition. This thesis evaluates the proposed method by five Thai tones. Tone can be classified by fundamental frequency (F_0). Appendix A shows F_0 of five Thai tones. Figure A.1 indicates a mid tone of the word *khāa*. Figure A.2 and Figure A.3 are the low tone of *ka'ii* and falling tone of *khâa*. Finally, the high tone of *kha'a* and rising tone of *sǒŋ* are shown in Figure A.4 and Figure A.5.

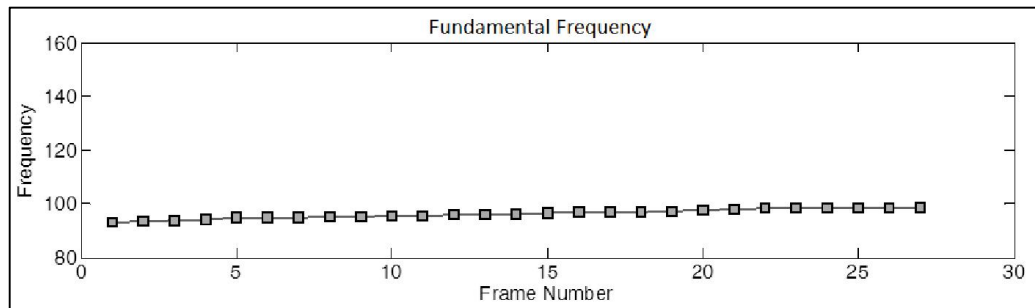


Figure A.1 Mid tone of the word *khāa*

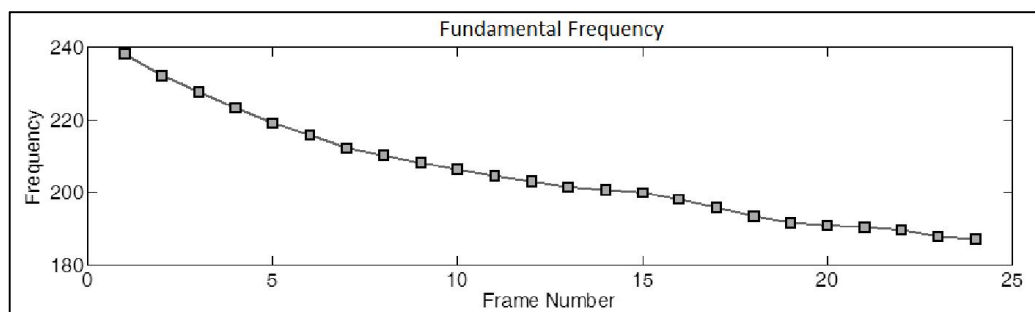


Figure A.2 Low tone of the word *ka'ii*

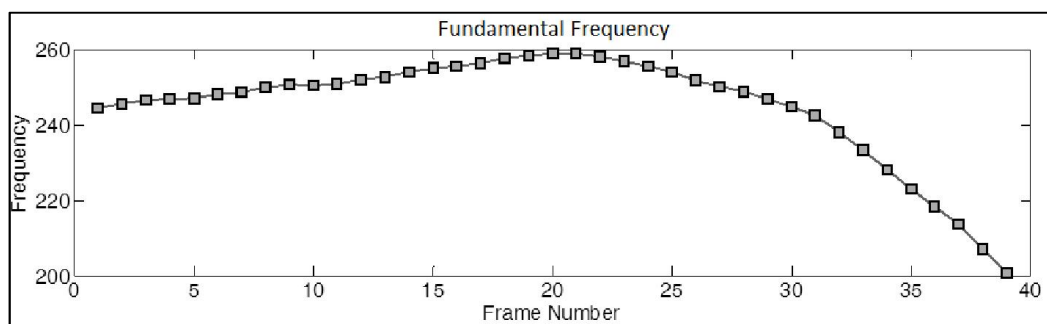


Figure A.3 Falling tone of the word *khâa*

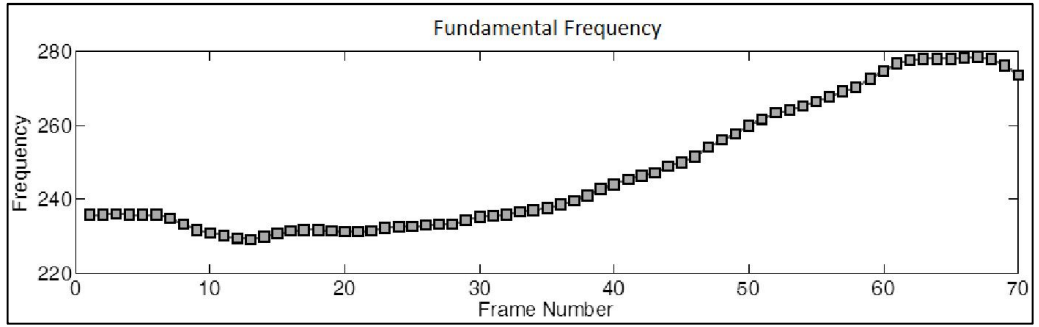


Figure A.4 Falling tone of the word *khâa*

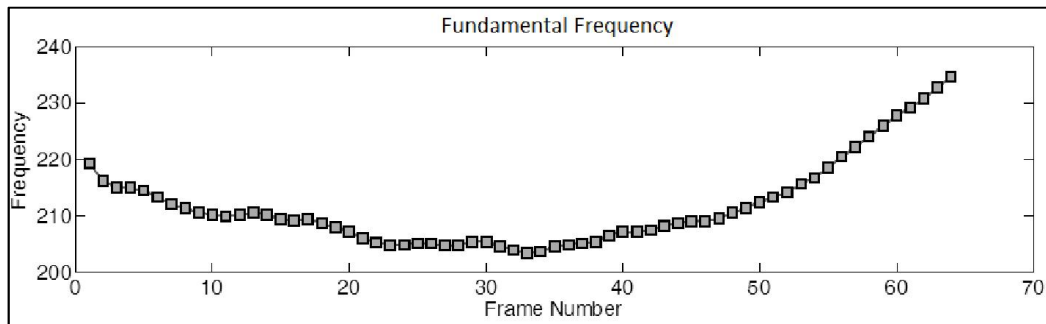


Figure A.5 Rising tone of the word “sōŋ”