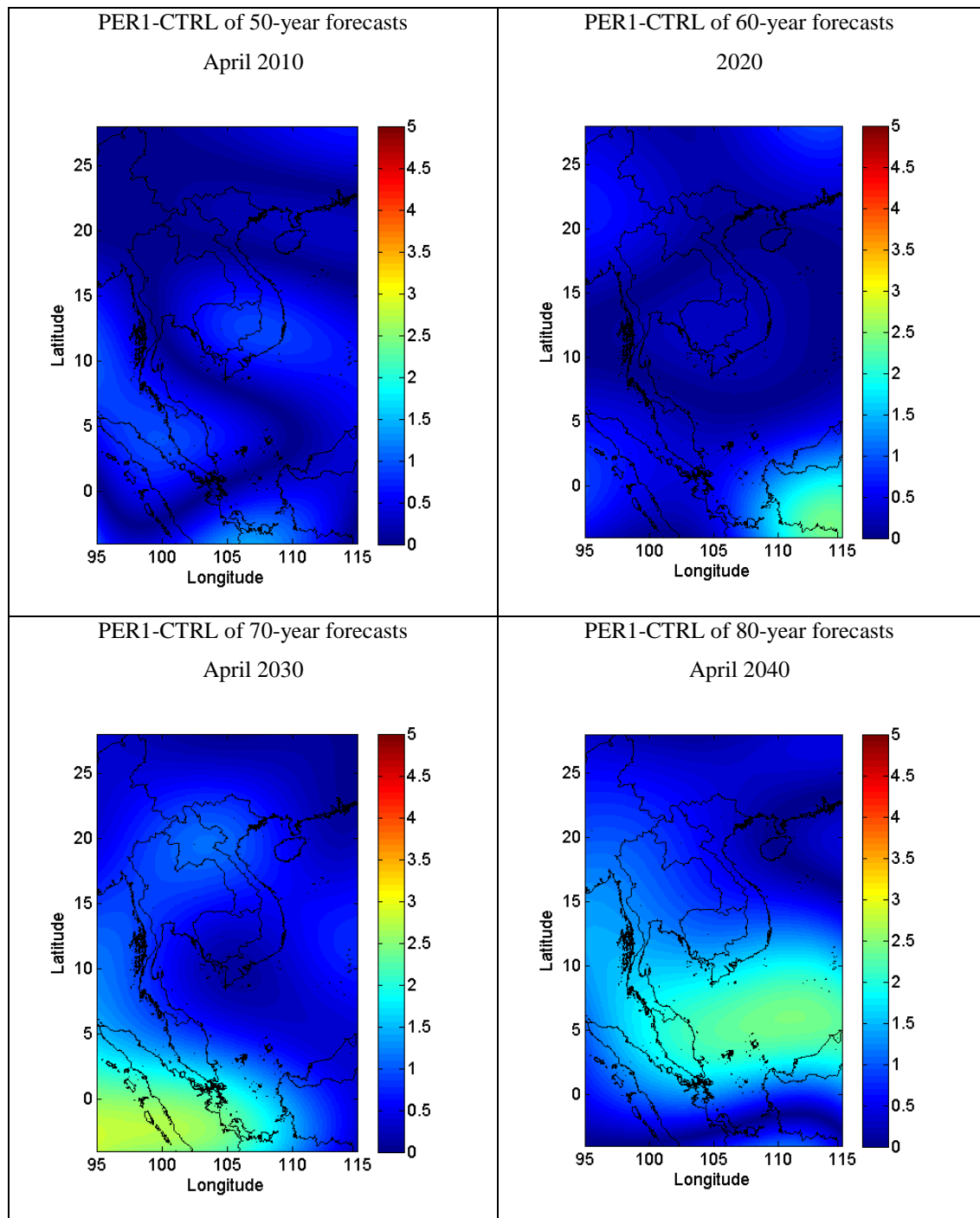
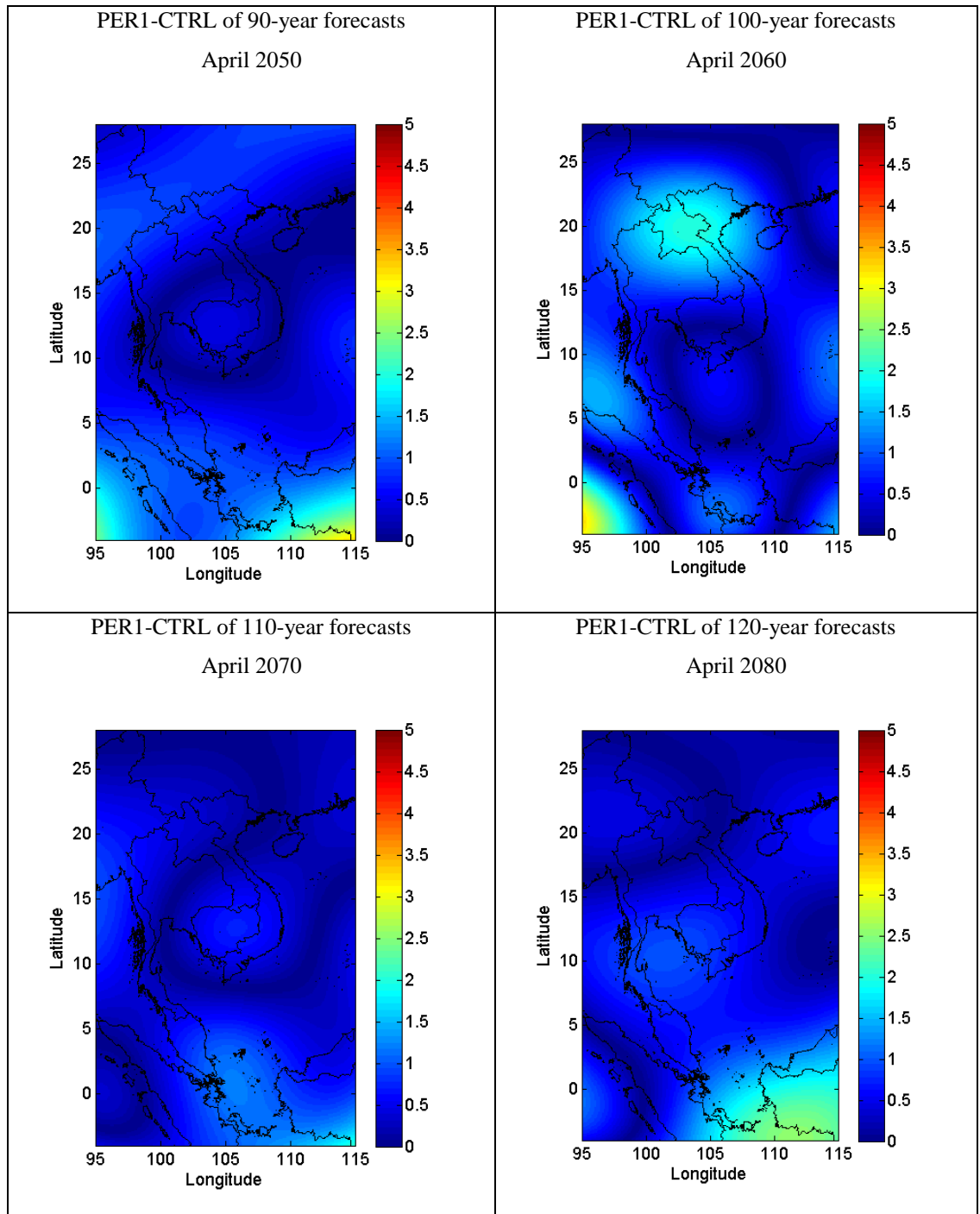


**APPENDIX B**  
**Difference in Average Surface Air Temperature Forecast**



**Figure B.1** The differences of the forecast values of average surface air temperature (°C) between PER1 and CTRL (PER1-CTRL).



**Figure B.1** (Cont.).

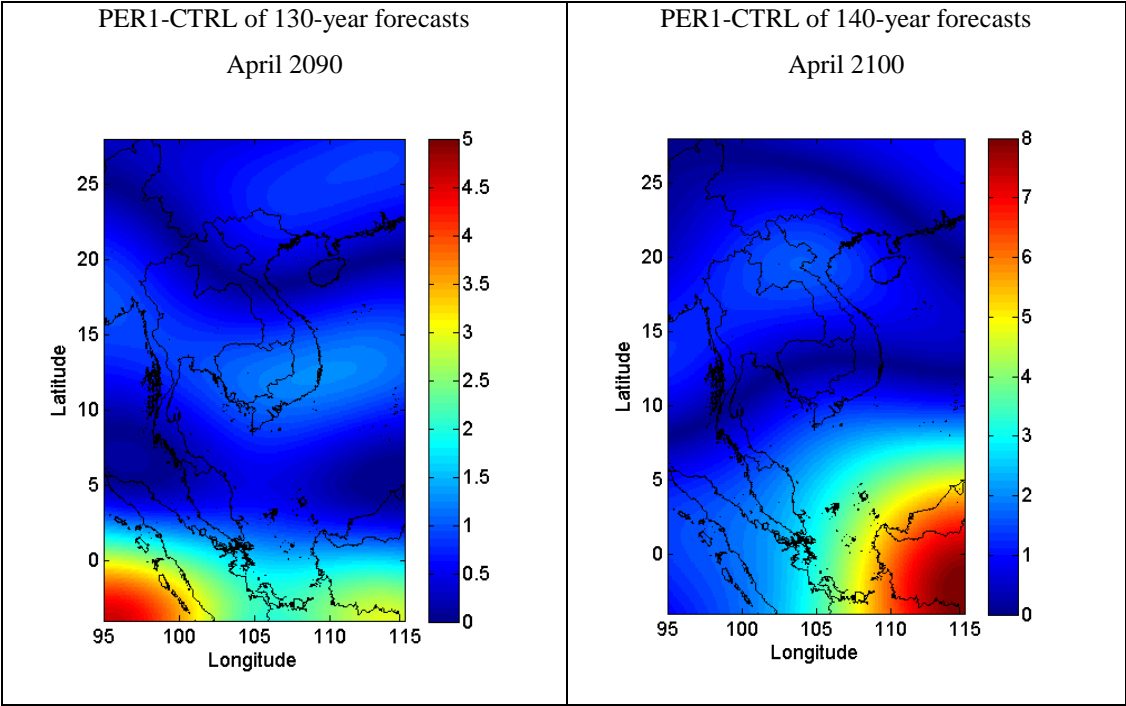
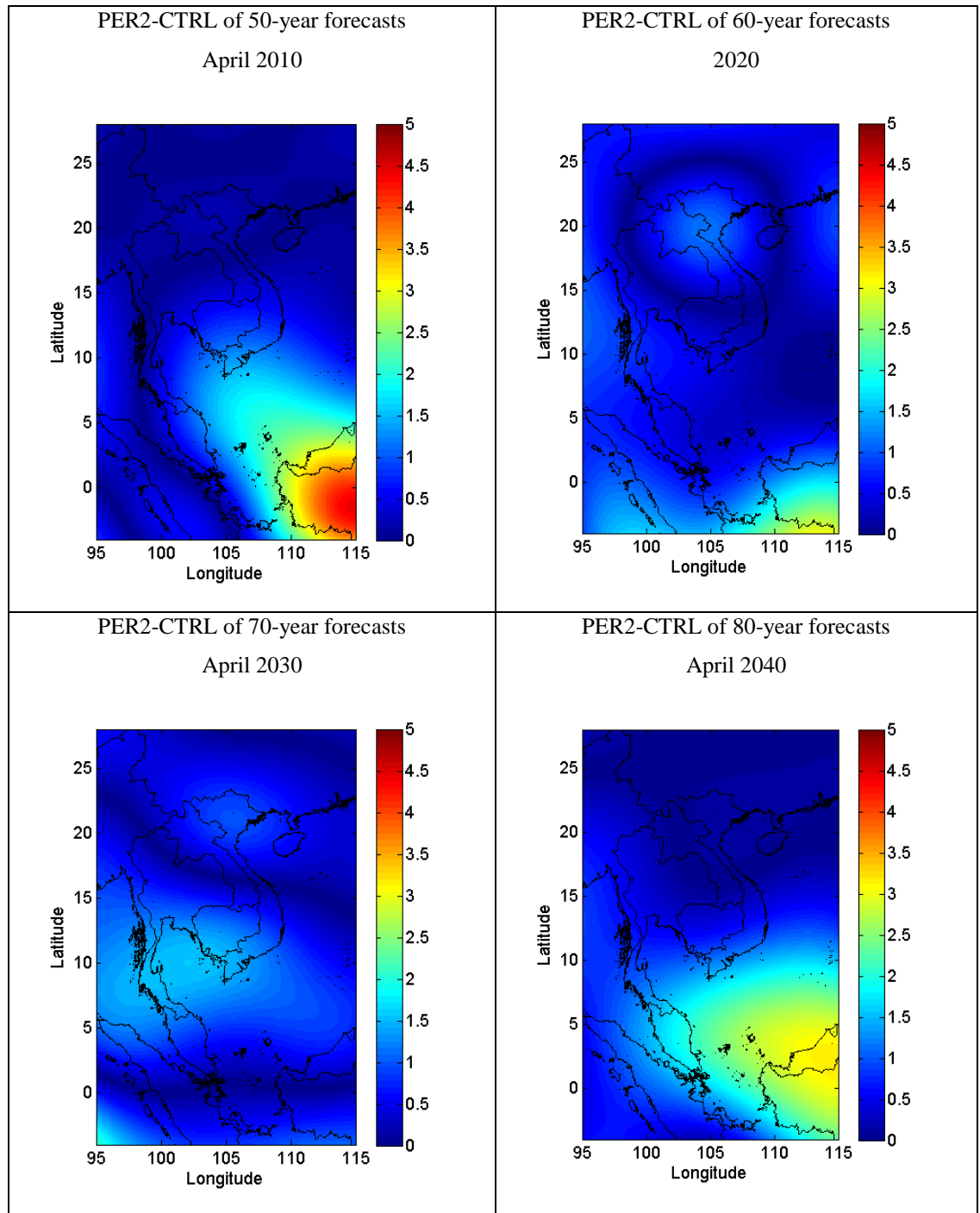
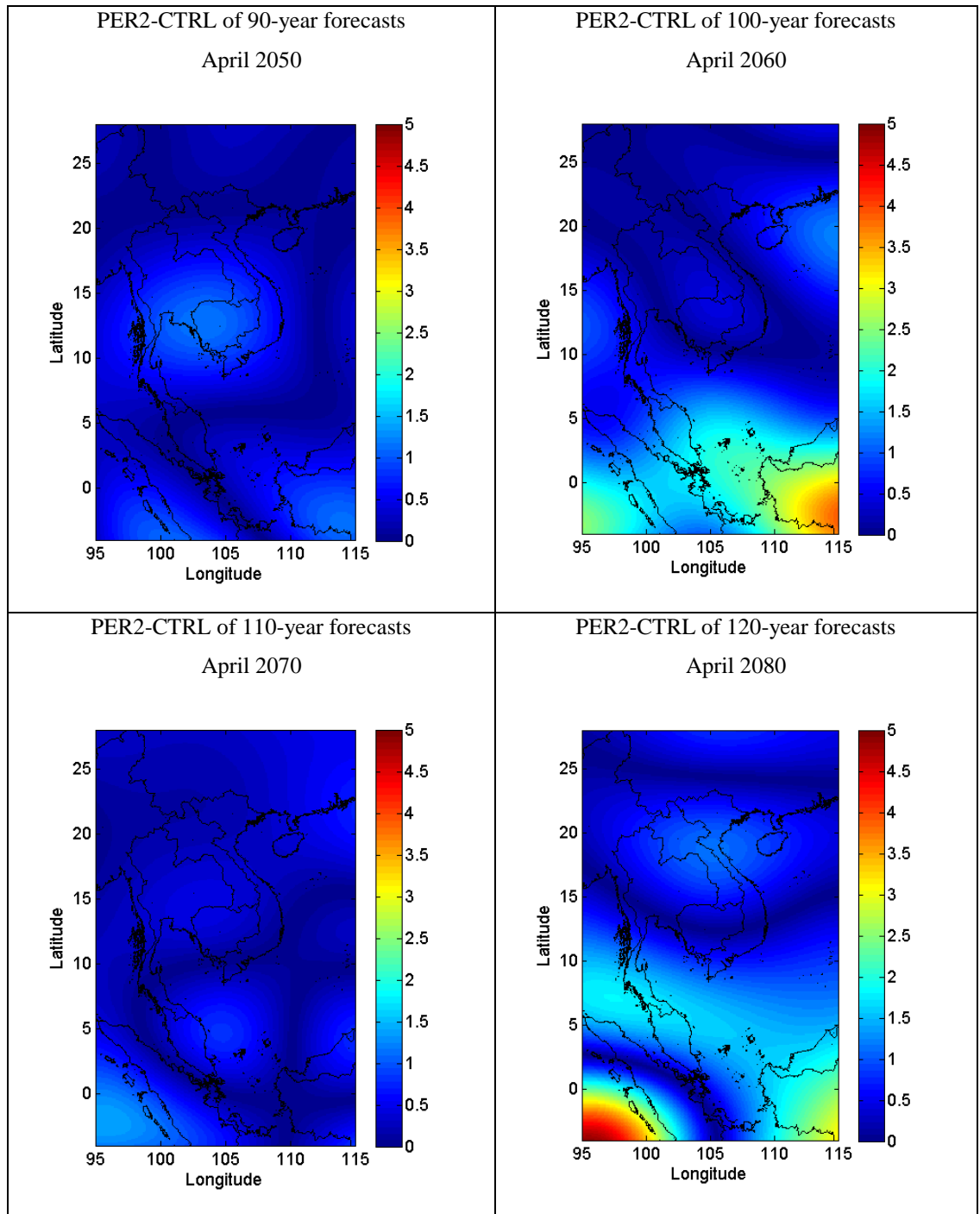


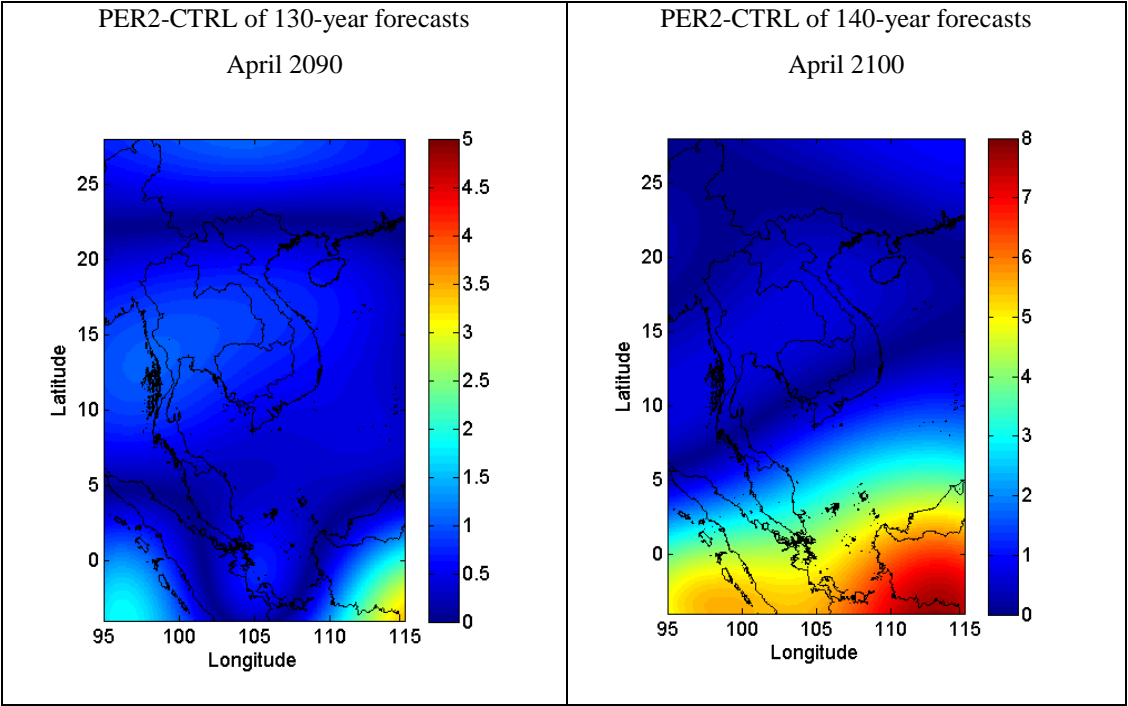
Figure B.1 (Cont.).



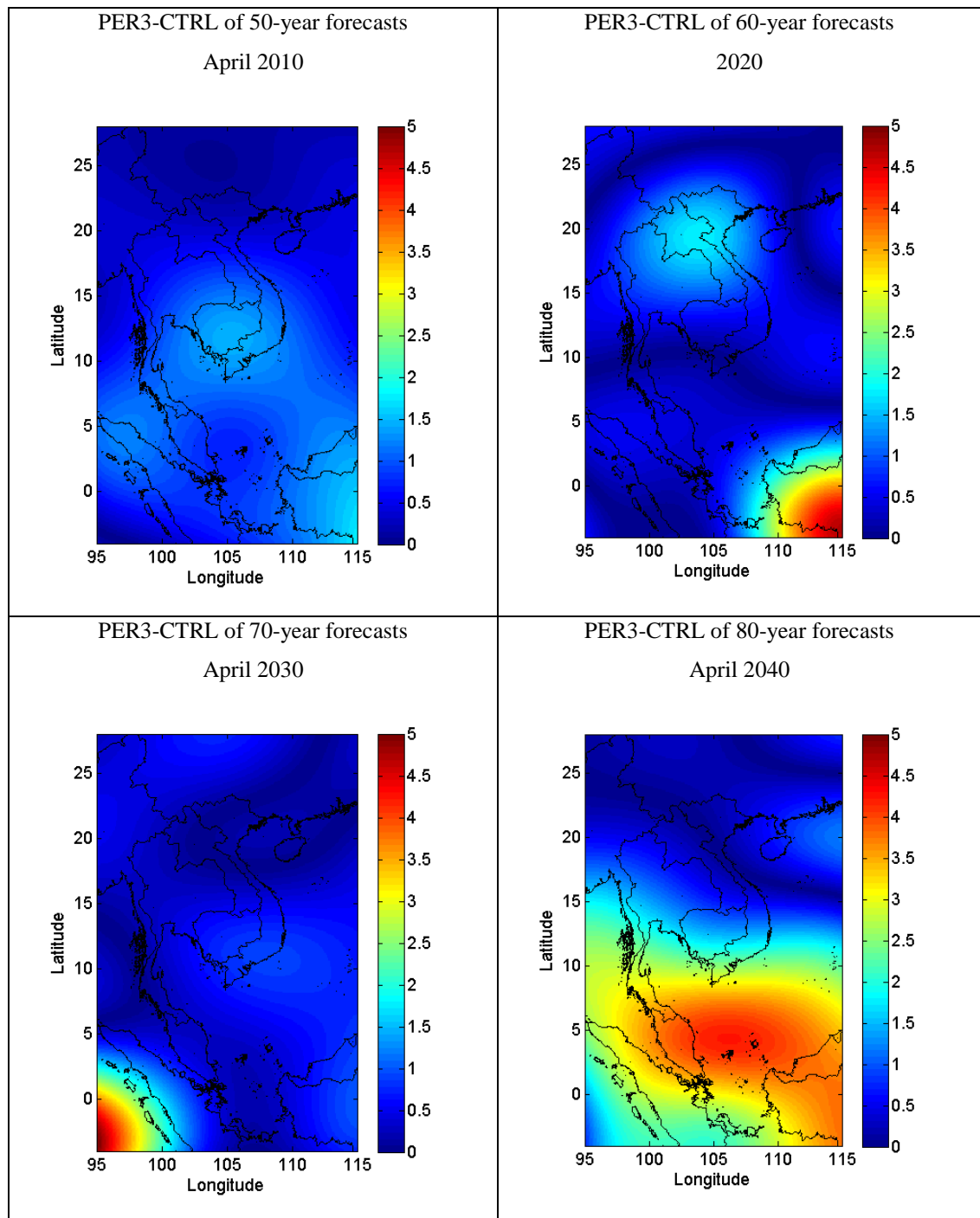
**Figure B.2** The differences of the forecast values of average surface air temperature (°C) between PER2 and CTRL (PER2-CTRL).



**Figure B.2** (Cont.).



**Figure B.2** (Cont.).



**Figure B.3** The differences of the forecast values of average surface air temperature (°C) between PER3 and CTRL (PER3-CTRL).



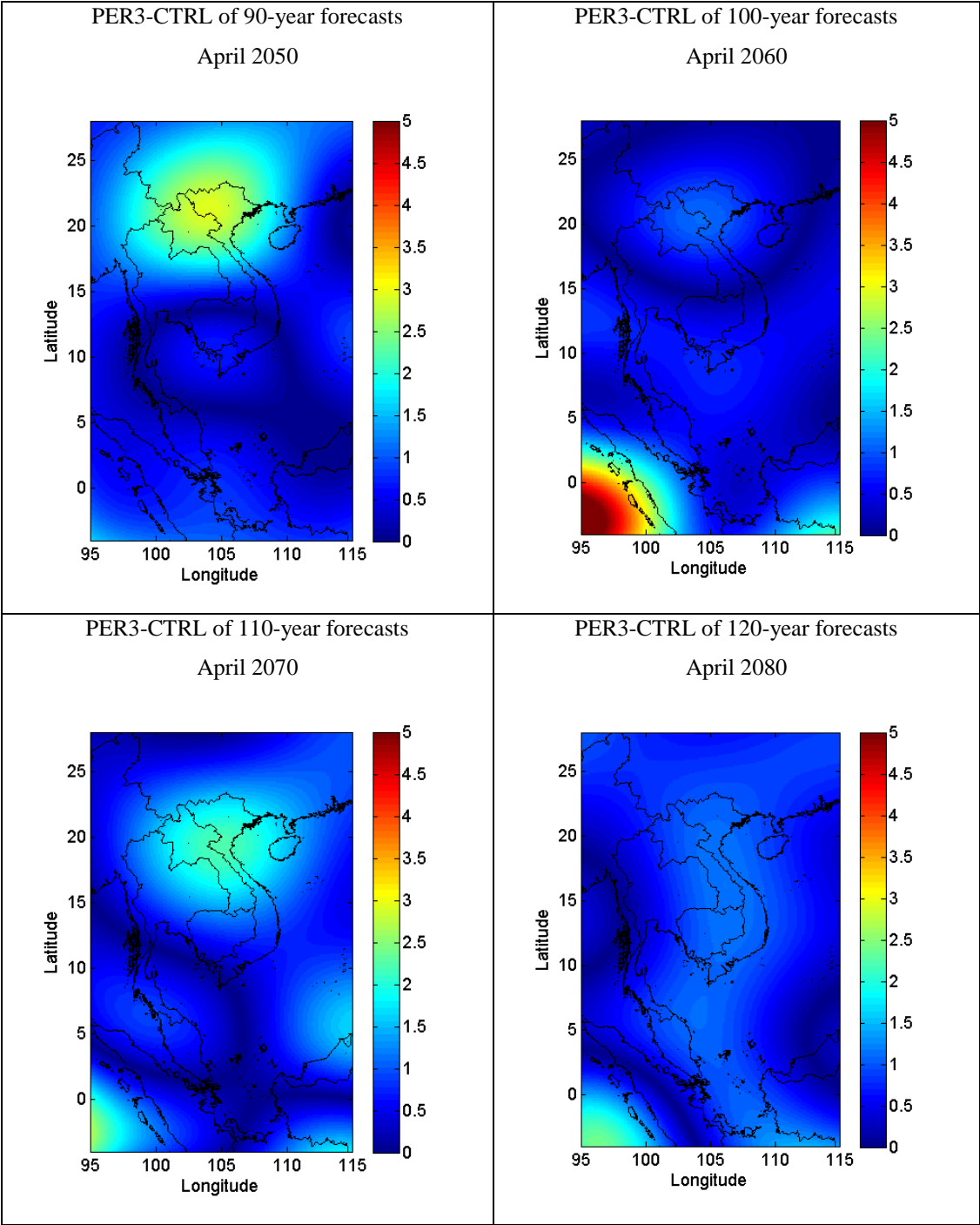
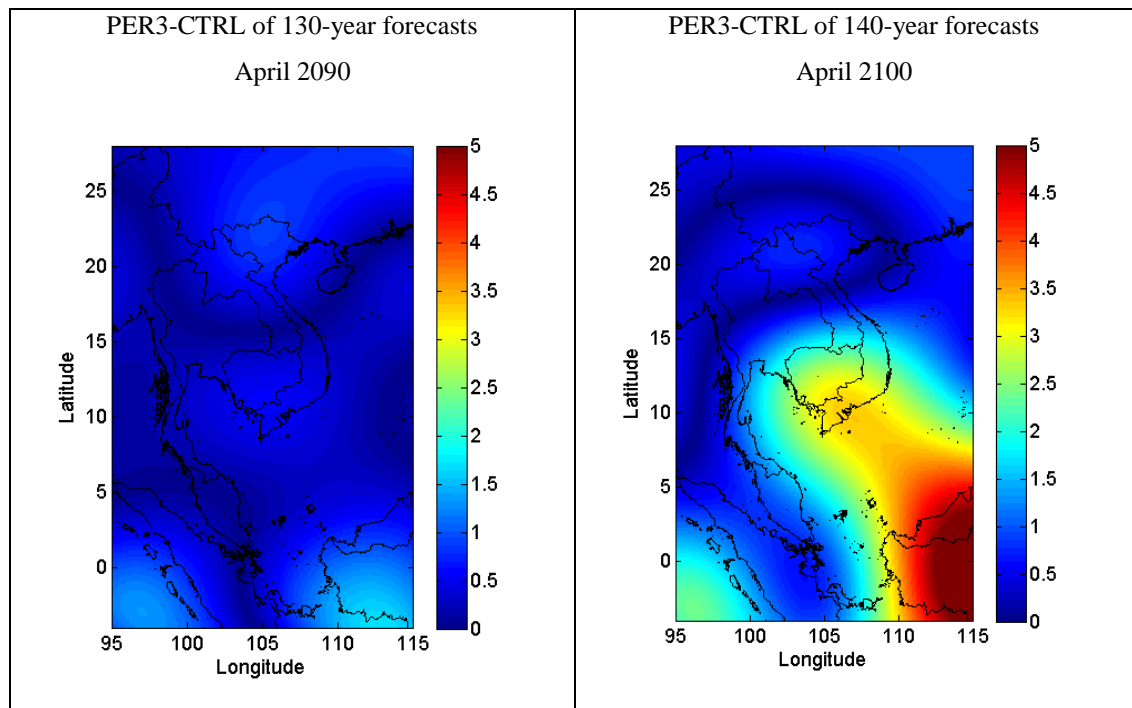
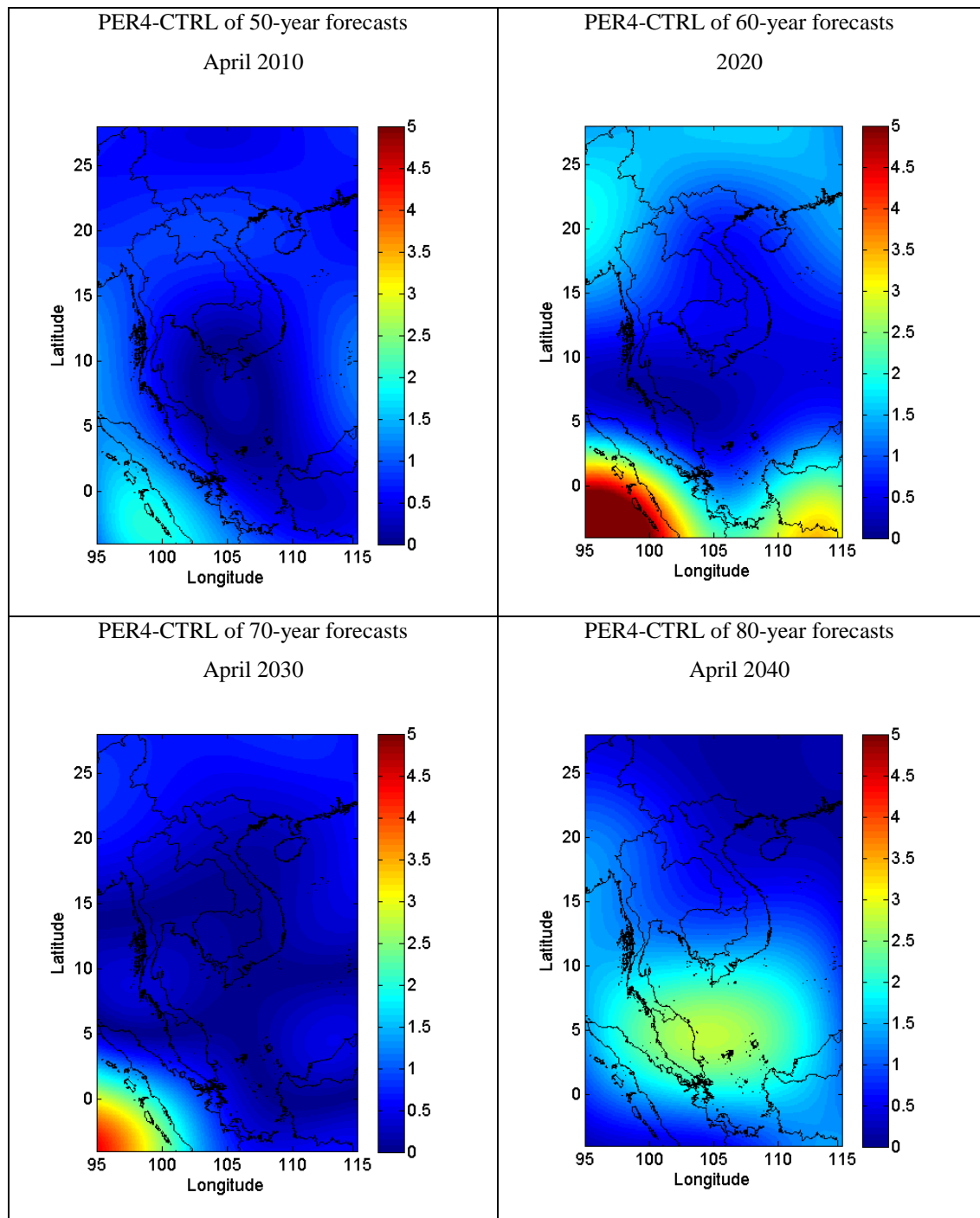


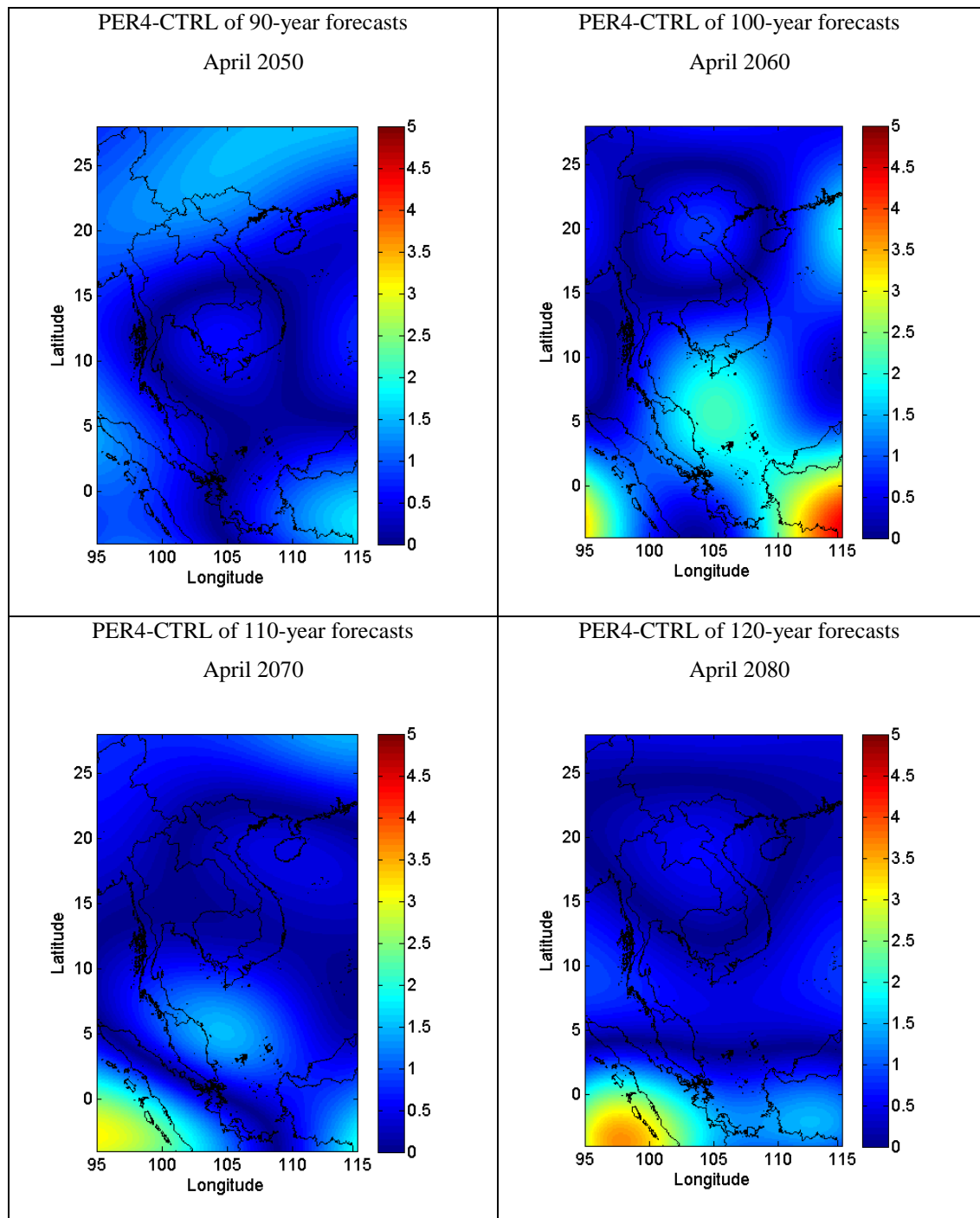
Figure B.3 (Cont.).



**Figure B.3** (Cont.).



**Figure B.4** The differences of the forecast values of average surface air temperature (°C) between PER4 and CTRL (PER4-CTRL).



**Figure B.4** (Cont.).

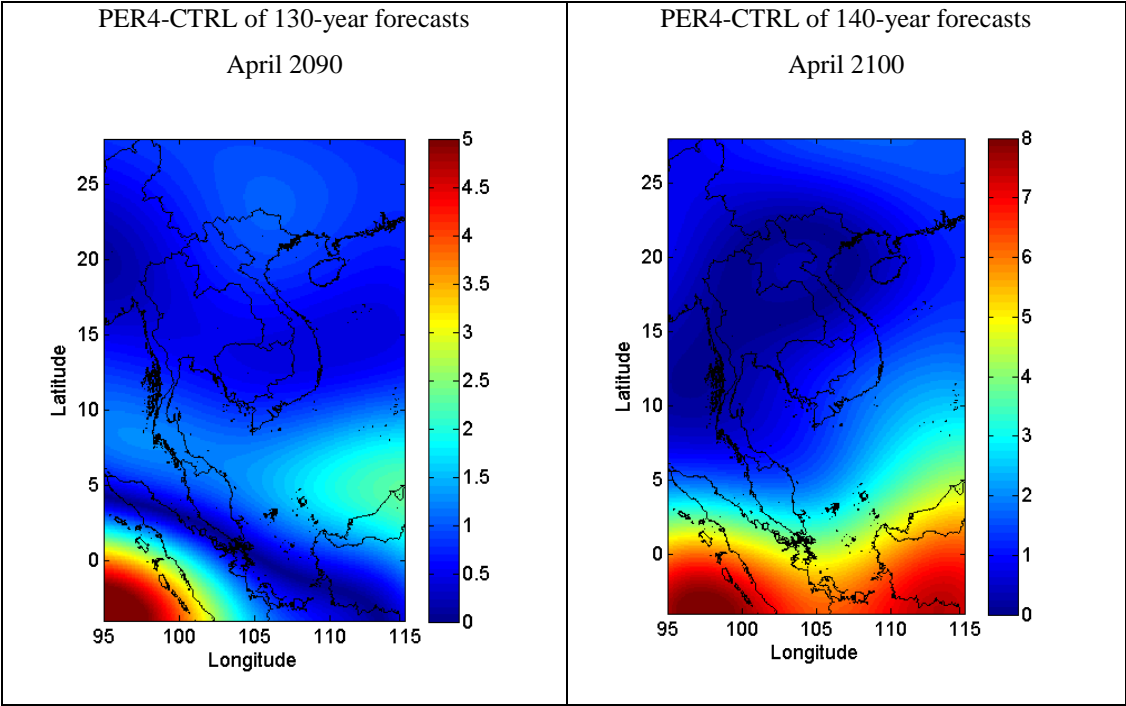
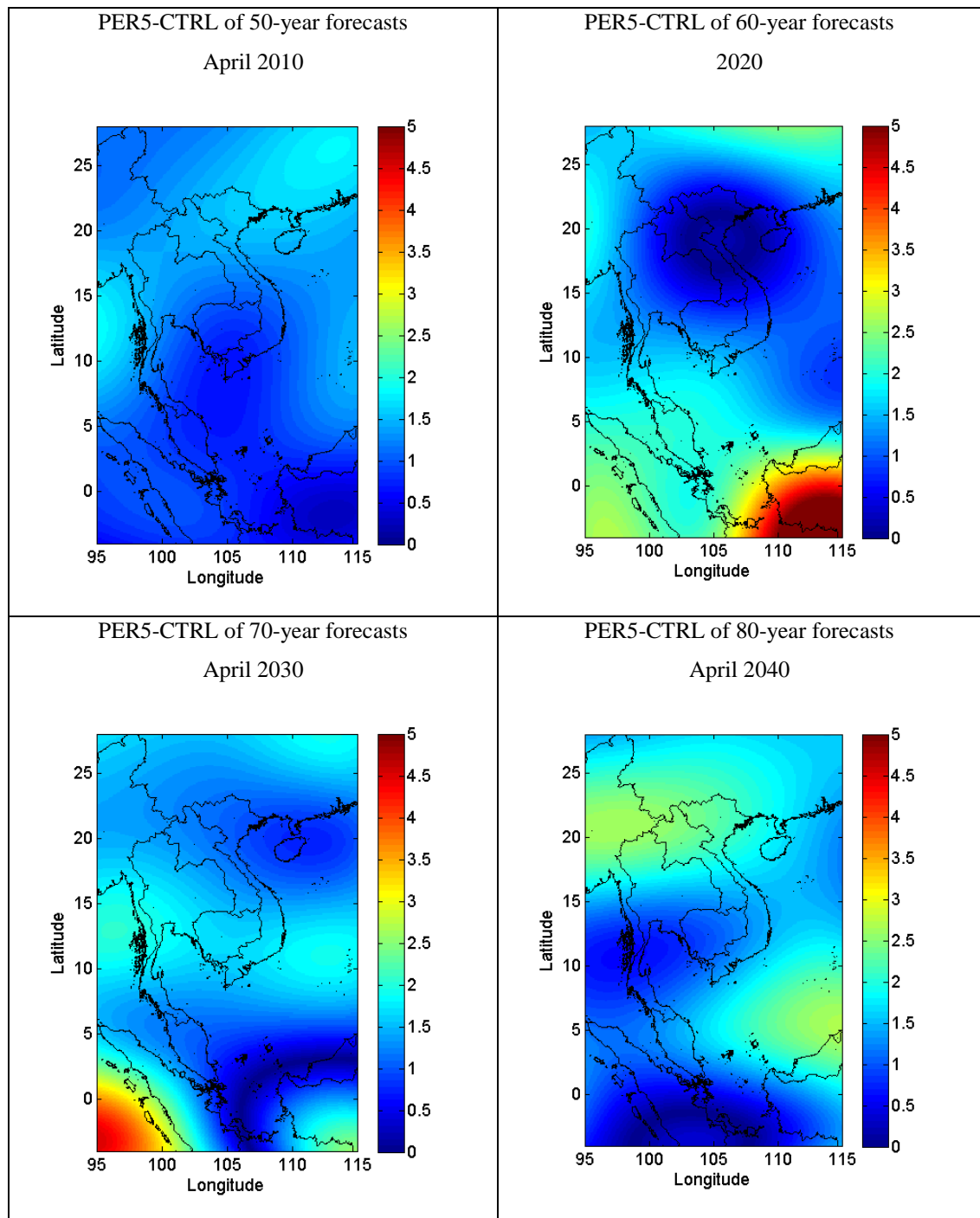


Figure B.4 (Cont.).



**Figure B.5** The differences of the forecast values of average surface air temperature (°C) between PER5 and CTRL (PER5-CTRL).

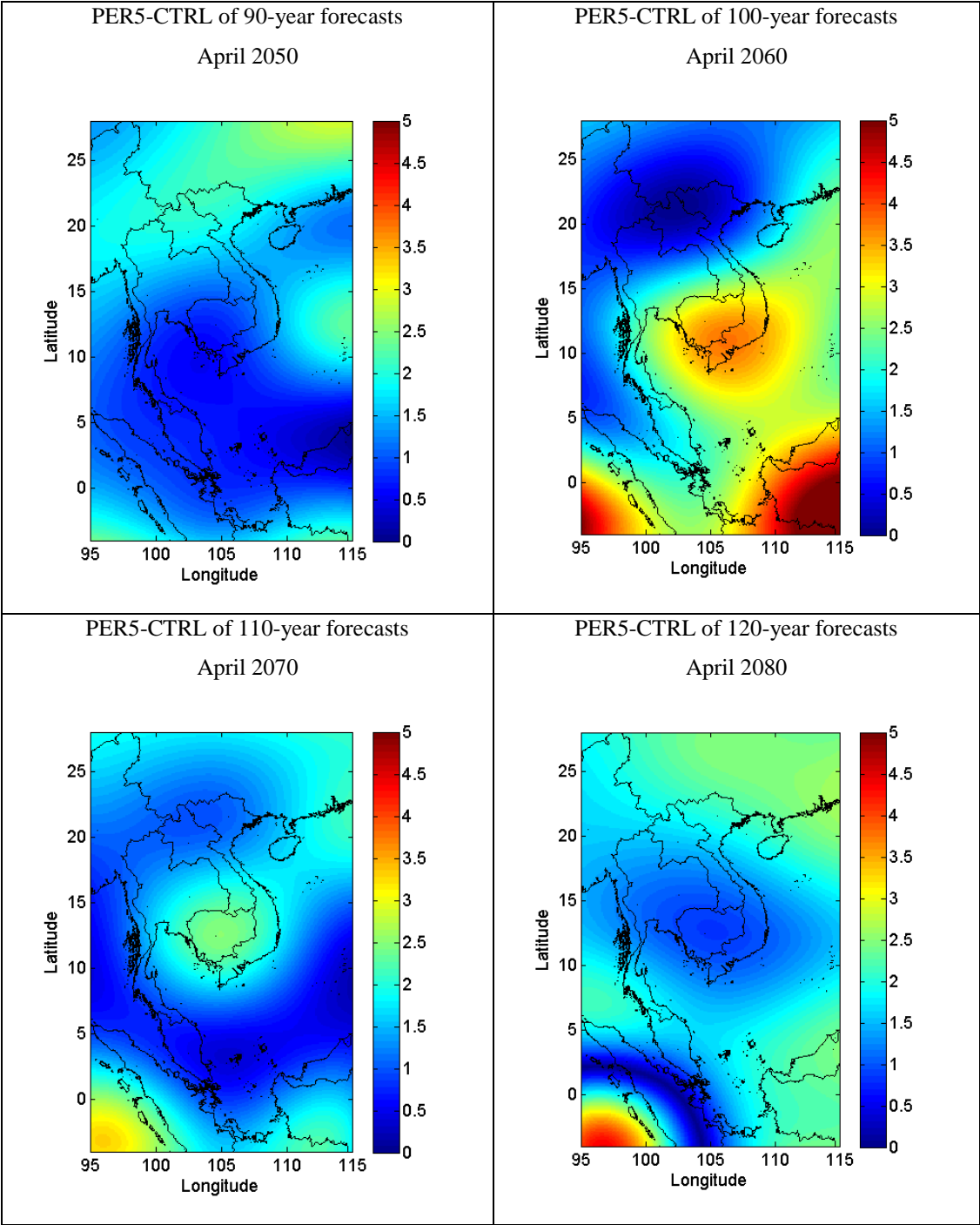
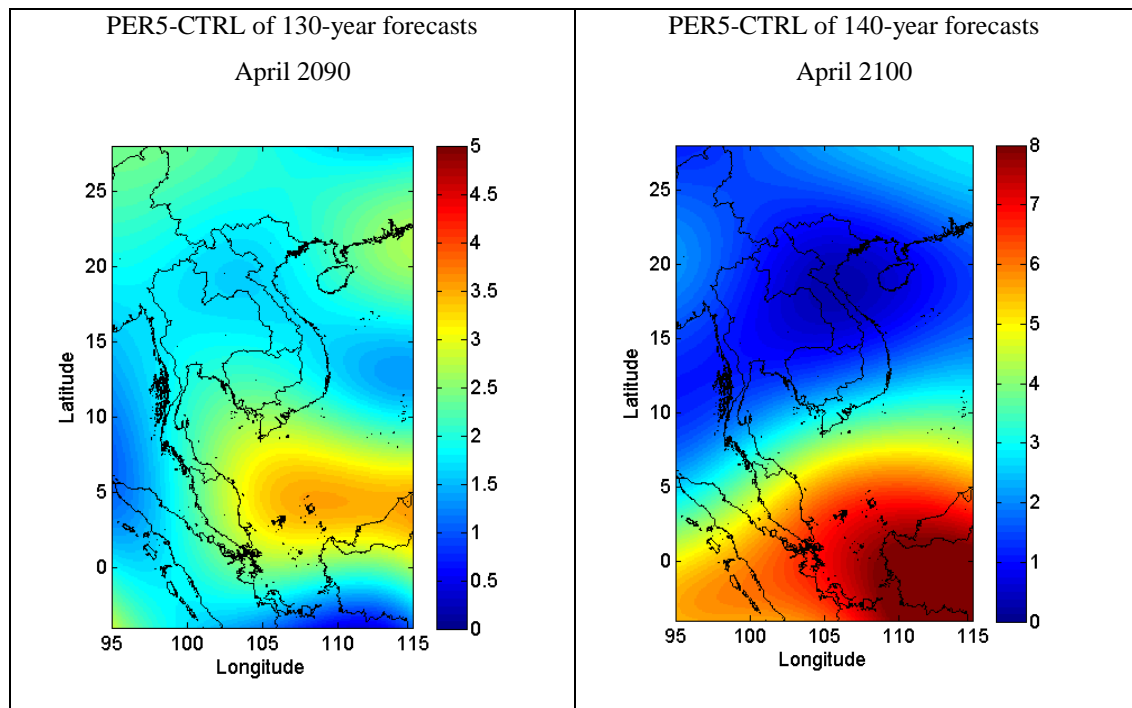
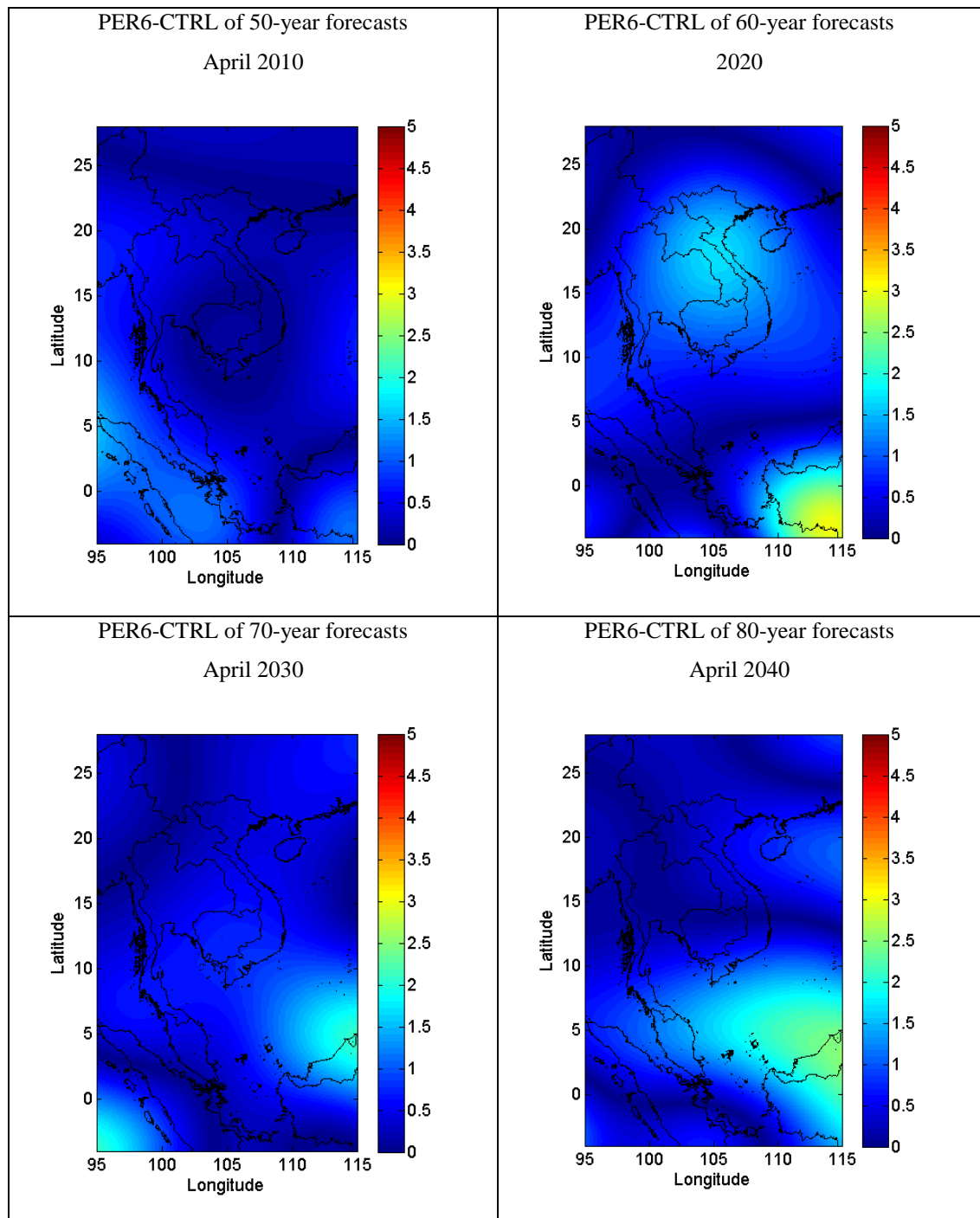


Figure B.5 (Cont.).

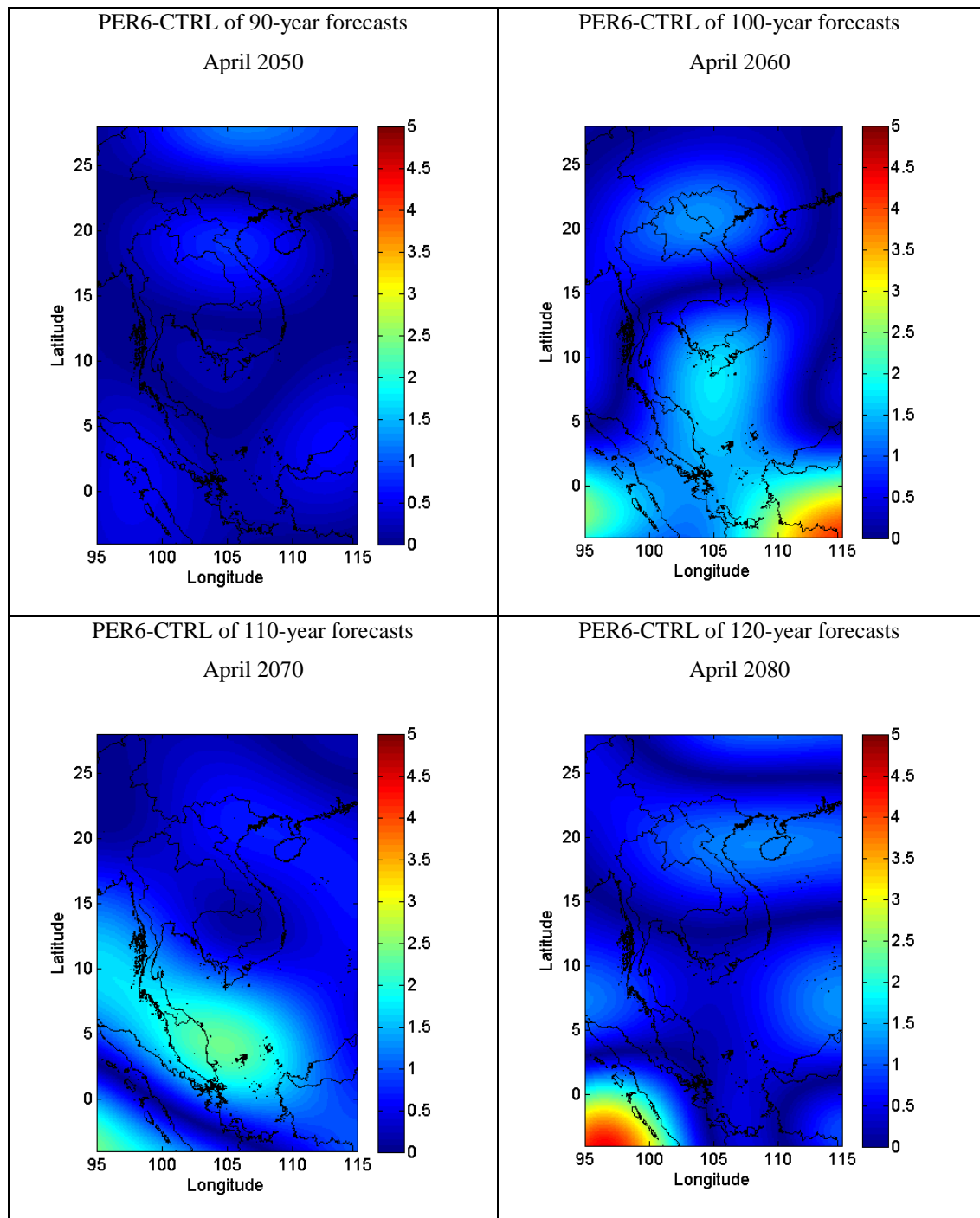


**Figure B.5** (Cont.).

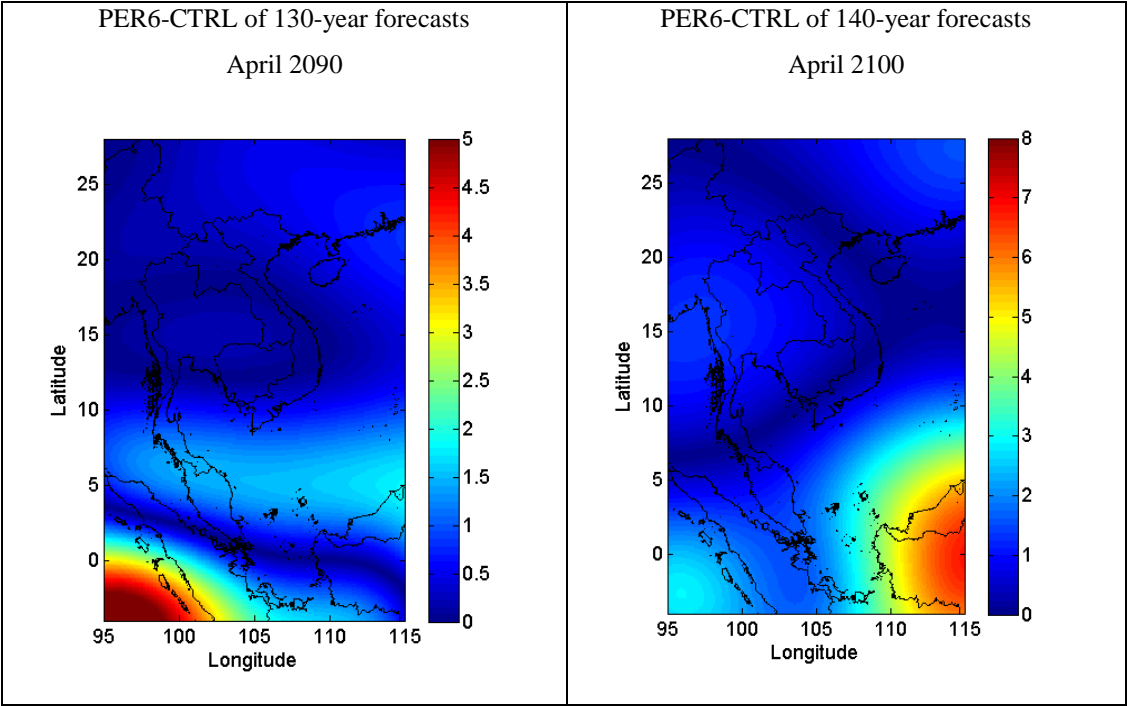




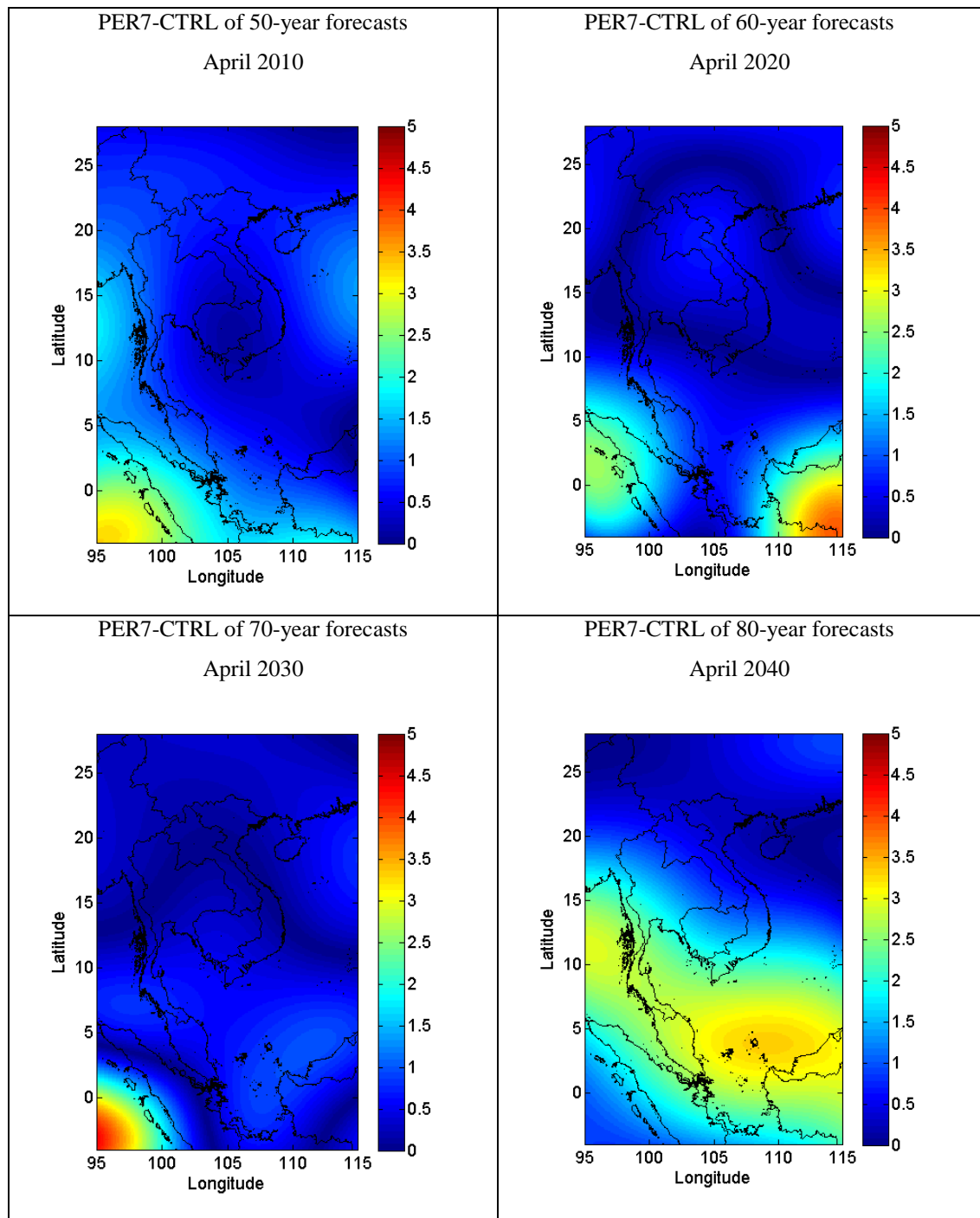
**Figure B.6** The differences of the forecast values of average surface air temperature (°C) between PER6 and CTRL (PER6-CTRL).



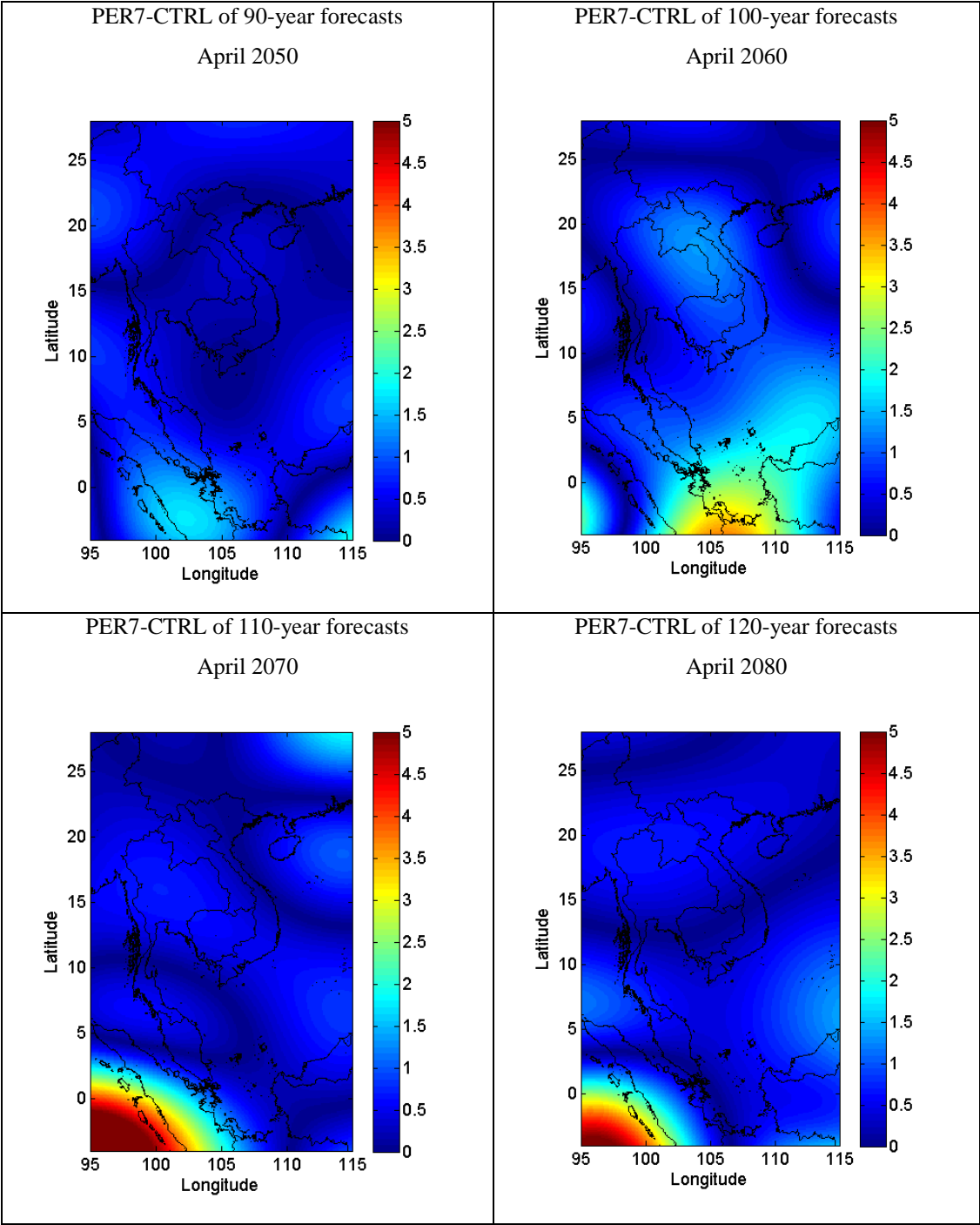
**Figure B.6** (Cont.).



**Figure B.6** (Cont.).



**Figure B.7** The differences of the forecast values of average surface air temperature (°C) between PER7 and CTRL (PER7-CTRL).



**Figure B.7** (Cont.).

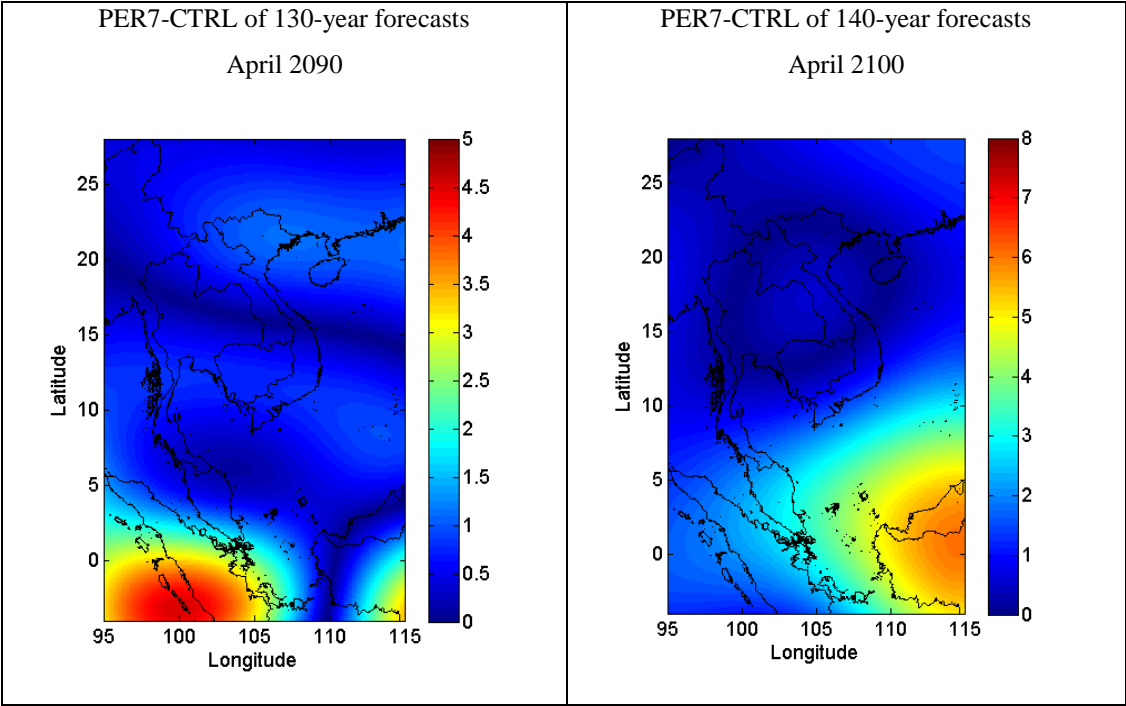


Figure B.7 (Cont.).