

## Bangkok, Safari World



- 08.30 Your tour guide will meet you at Hotel lobby.  
Depart to Safari World
- 09.30 Visit Safari Park . The drive-thru open zoo in the heart of Bangkok that houses a variety of rare and endangered species from every part of the world within a free-living natural environment.
- 11.00 Explore Marine Park offers a fun-filled family day with 7 amazing world-class animal shows and live action stunt spectacular, the thrilling "jungle cruise" river ride.
- 12.00 Buffet lunch.  
A game town for the young or the young at heart, hundreds of nature inspired exhibits of endangered species of wild animals and birds from all parts of the world. The variety of marine animals shows and stunt show as
- |                          |                            |
|--------------------------|----------------------------|
| *Sealion show            | *Bird show                 |
| *Polar bear feeding show | *Western cowboy stunt show |
| *Spy war show            | *Dolphin show              |
- 16.00 Transfer to Hotel.

## Ayutthaya, Temples



- 08.00 Your tour guide will meet you at Hotel lobby.  
Pick up from hotel  
Depart by private vehicle to Ayutthaya province.
- 09.00 Arrive at **Bang Pa-In Summer Palace**.  
Visit the Palace which built for great relationship of Thai, Chinese and European.
- 11.30 Depart to **Ayutthaya Ancient Capital**. The former Capital for over 417 years. The ruin and the remains structure signified the prosperous era of Siam Kingdom.
- 12.30 Buffet lunch at restaurant
- 13.15 " **Wat Panang Cheng** was built over 450 years before Ayutthaya became the Capital  
" **Wat Yai Chai Mongkol** the great victory Temple commemorates the last elephant war by Thai and Burmese.
- 16.00 " **Wat Maha That**: Over 600 years, was the heart and soul of the Ayutthaya people. It was almost completely destroyed by the Burmese during Thai-Burmese war.  
Return to Bangkok and transfer to hotel.

**Remark:** Palace and Temples are sacred places, please dress politely. No Shorts, no sleeveless shirts. Hat, cap and umbrella may helpful.  
Certain buildings may closed on holiday and during Royal Ceremonies.  
Camera may not use in the buildings.  
Wear any comfort walking shoes. ( easy to put on and off)

## Pattaya, Coral island



08.00 Your tour guide will meet you at Hotel lobby.

Depart for Pattaya

10.45 Arrive at Pattaya Beach

Take Fishing Boat to Coral Island

Enjoy beach activities and relax

12.00 Lunch on the Island

Take bottom glass boat to see the coral reef .

15.00 Back to Pattaya beach

16.00 Go back to Bangkok

18.00 Transfer to Hotel.

**Remark:** Take along towel, wear sandals, sun glasses and sun tan lotion

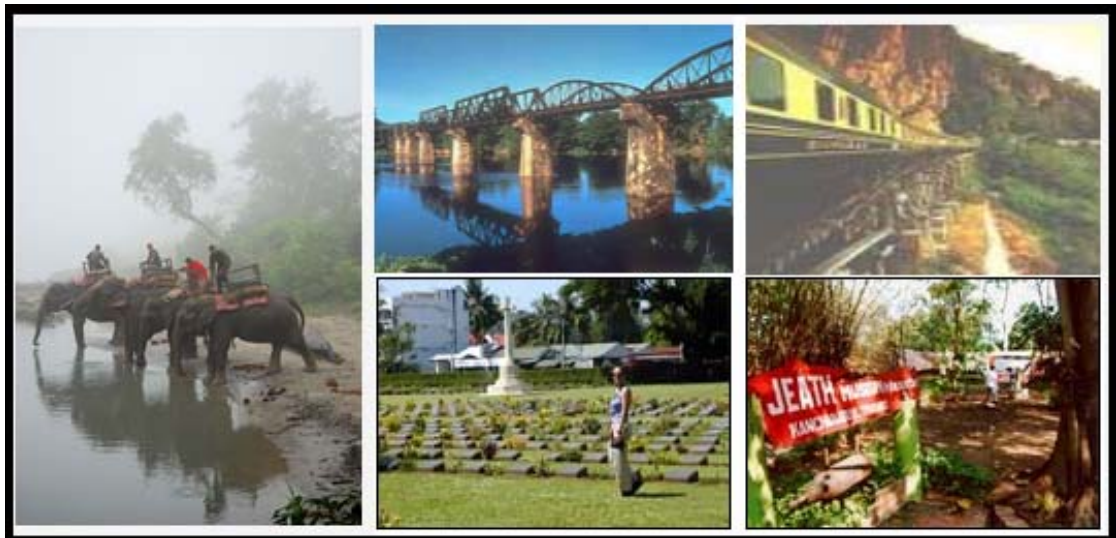
### River Kwai with historical train ride



- 07.30 Your tour guide will meet you at Hotel lobby.  
Depart to Kanchanaburi.
- 09.00 Arrive at Jeath Museum the duplicated prisoners of WWII camp.  
Then proceed to the Bridge over the River Kwai.
- 10.45 Take historical train ride to the jungle
- 12.30 Buffet lunch by the cliff-side and the Kwai noi river.
- 13.30 Then take car to Cemetery of the allied soldier
- 14.15 Return to Bangkok
- 17.00 transfer to hotel



### River Kwai with elephant ride



- 07.30 Your tour guide will meet you at Hotel lobby.  
Depart to Kanchanaburi.
- 09.00 Arrive at Jeath Museum the duplicated prisoners of WWII camp.  
Then proceed to the Bridge over the River Kwai.
- 10.45 Take historical train ride to the jungle
- 12.30 Buffet lunch by the cliff and the Kwai noi river
- 13.30 Go to Elephant camp for riding Elephant.
- 15.00 Then take car to Cemetery of the allied soldier  
Return to Bangkok
- 17.00 transfer to hotel