

APPENDIX

The Table of Characteristics of *Dedrobium* Hybrid

Characteristics and symbols

1. To assess distinctness, uniformity and stability, the characteristics and their states as given in the Table of characteristics should be used.
2. Notes (1 to 9), for the purposes of electronic data processing, are given opposite the states of each characteristic
3. Legend :
 - (*) Characteristics should be used on all varieties in every growing season over which examinations are made and always be included in the variety descriptions, except when the state of expression of a preceding characteristic render this impossible.
 - (+) See Explanations on the Table of characteristics
4. The optimum stage of plant growth for assessment of each characteristic is indicated in the sixth column of Table of characteristics.
5. Type of assessment of characteristics indicated in column seven of Table of characteristics is as follows.

Type of assessment

MG: Measurement by a single observation of a group of plants or parts of plants

MS: Measurement of a number of individual plants or parts of plants

VG: Visual assessment by a single observation of a group of plants or parts of plants

VS: Visual assessment by observation of individual plants or parts of plants

6. An explanation of the types of expression of characteristics (qualitative, quantitative

and pseudo-qualitative) is provided in the General Introduction as follows:

QL Qualitative characteristic

QN Quantitative characteristic

PQ Pseudo-Quantitative characteristic

The followings are characteristics for grouping varieties:

- a. Leaf : waxi bloom on upper side
- b. Leaf : waxi bloom on lower side
- c. Stem : waxi bloom
- d. Stem : type of internodes
- e. Plant : time of flowering of primary raceme
- f. Stem : number of nodes on main stem
- g. Capsule : colour

7. Table of Characteristics

Example Varieties

Note/

7.1	(*)	Plant: size	
	QN	very small	1
		small	3
		medium	5
		large	7
		very large	9
7.2	(*) (a)	Pseudobulb: attitude	
	QN	erect	1
		semi-erect	3
		horizontal	5
		semi-drooping	7

		drooping retombant	9
7.3	(*)(a)	Pseudobulb: length	
	QN	very short	1
		short	3
		medium	5
		long	7
		very long	9
7.4	(*)(a)	Pseudobulb:thickness	
	QN	very thin	1
		thin fin	3
		medium	5
		thick	7
		very thick	9
7.5	(*)(a)	Pseudobulb: shape in longitudinal section	
	PQ	linear	1
		lanceolate	2
		ovate	3
7.6	(*)(b)	Leaf: length	
	QN	short	3
		medium	5
		long	7
7.7	(*)(b)	Leaf: width	
	QN	narrow	3
		medium	5
		large	7
7.8	(*)(+)(b)	Leaf: shape	
	PQ	narrow elliptic	1
		elliptic	2
		narrow ovate	3
		narrow obovate	4
		spatulate	5
7.9	(b)	Leaf: main green color	

	QN	light	3
		medium	5
		dark	7
7.10 (b)		Leaf: presence of variegation	
	QL	absent	1
		present	9
7.11 (+)(b)		Leaf: type of variegation	
	QL	brindled	1
		spotted	2
		striped	3
		centered	4
		edged	5
7.12 (b)		Leaf: pubescence	
	QL	absent	1
		Present	9
7.13 (*) (c)		Inflorescence: position of adherence to pseudobulb	
	QL	along whole length	1
		top part only	2
7.14 (*) (c)		Inflorescence: position of flowers	
	QL	along peduncle	1
		apex only	2
7.15 (*) (c)		Inflorescence: number of flowers	
	QN	few	3
		medium	5
		many	7
7.16 (*) (+)		Peduncle: length	
	QN	short	3
		medium	5
		long	7
7.17 (*)		Peduncle: thickness	
	QN	thin	3
		medium	5

	thick	7
7.18 (*)	Peduncle: attitude	
PQ	erect	1
	semi-erect	2
	horizontal	3
	recurving	4
7.19 (*) (+)	Pedicellate-ovary: length	
QN	short	3
	medium	5
	long	7
7.20 (*)	Pedicellate-ovary: thickness	
QN	thin	3
	medium	5
	thick	7
7.21 (*) (c)	Flower: general appearance of petals and sepals	
PQ	all incurving	1
	some incurving, some spreading	2
	all	3
	some spreading, some reflexing	4
	all reflexing	5
	some incurving, some reflexing	6
7.22 (d)	Flower: length of mentum	
QN	short	3
	medium	5
	long	7
7.23 (*) (+) (d)	Flower: length in front view	
QN	short	3
	medium	5
	long	7
7.24 (*) (+) (d)	Flower: width in front view	
QN	narrow	3
	medium	5

		broad	7
7.25	(c)	Flower: fragrance	
	QL	absent	1
		present	9
7.26	(*)(c)	Dorsal sepal: curvature of longitudinal axis	
	QN	strongly	1
		moderately incurving	3
		straight	5
		moderately recurving	7
		strongly recurving	9
7.27	(*)(d)	Dorsal sepal: length	
	QN	short	3
		medium	5
		long	7
7.28	(*)(d)	Dorsal sepal: width	
	QN	narrow	3
		medium	5
		broad	7
7.29	(*)(+)(d)	Dorsal sepal: shape	
	PQ	narrow elliptic	1
		elliptic	2
		ovate	3
		obovate	4
		transverse elliptic	5
		spatulate	6
7.30	(*)(+)(c)	Dorsal sepal: cross section	
	QN	strongly	1
		moderately concave	3
		flat plate	5
		moderately convex	7
		strongly convex	9
7.31	(*)(c)	Dorsal sepal: twisting	

	QN	absent or very weak	1
		weak	3
		medium	5
		strong	7
		very strong	9
7.32	(*)(c)	Dorsal sepal: undulation of margin	
	QN	absent or very weak	1
		weak	3
		medium	5
		strong	7
		very strong	9
7.33	(*)(c)	Lateral sepal: curvature of longitudinal axis	
	QN	strongly incurving	1
		moderately incurving	3
		straight	5
		moderately recurving	7
		strongly recurving	9
7.34	(*)(d)	Lateral sepal: length	
	QN	short	3
		medium	5
		long	7
7.35	(*)(d)	Lateral sepal: width	
	QN	narrow	3
		medium	5
		broad large	7
7.36	(*)(+)(c)	Lateral sepal: shape	
	PQ	narrow elliptic	1
		Elliptic	2
		ovate	3
		obovate	4
		transverse elliptic	5
		spatulate	6

7.37	(*)(+)(c)	Lateral sepal: cross section	
	QN	strongly concave	1
		moderately concave	3
		straight	5
		moderately convex	7
		strongly convex	9
7.38	(*)(c)	Lateral sepal:twisting	
	QN	absent or very weak	1
		weak	3
		medium	5
		strong	7
		very strong	9
7.39	(*)(c)	Lateral sepal: undulation of margin	
	QN	absent or very weak	1
		weak	3
		medium	5
		strong	7
		very strong	9
7.40	(*)(c)(e)	Sepal: number of colors	
	QL	one	1
		two	2
		three	3
		more than three plus	
7.41	(*)(c)(e)	Sepal: color pattern	
	QL	self-colored	1
		shaded	2
		edged	3
		striped	4
		netted	5
		spotted	6
		shaded and striped	7
		shaded and netted	8

		shaded and spotted	9
7.41	(c)(e)	Sepal: main color	
	PQ	RHS Colour Chart (indicate reference number) Code RHS	
7.42	(c)(e)	Varieties with shaded sepals only: Sepal: extent of shading	
	QN	small	3
		medium	5
		large	7
7.43	(*)(c)	Petal: curvature of longitudinal axis	
	QN	strongly incurving	1
		moderately incurving	3
		straight	5
		moderately recurving	7
		strongly recurving	9
7.44	(*)(d)	Petal: length	
	QN	short	3
		medium	5
		long	7
7.45	(*)(d)	Petal: width	
	QN	narrow	3
		medium	5
		broad large	7
7.46	(*)(+)(c)	Petal: shape	
	PQ	narrow elliptic	1
		elliptic	2
		ovate	3
		obovate	4
		transverse elliptic	5
		spatulate	6
7.47	(*)(+)(c)	Petal: cross section	
	QN	strongly concave	1
		moderately concave	3
		straight	5

		moderately convex	7
		strongly convex	9
7.48	(*)(c)	Petal: twisting	
	QN	absent or very weak	1
		weak	3
		medium	5
		strong	7
		very	9
7.49	(*)(c)	Petal: undulation of margin	
	QN	absent or very weak	1
		weak	3
		medium	5
		strong	7
		very strong	9
7.50	(*)(c)(e)	Petal: number of colors	
	QL	one	1
		two	2
		three	3
		more than three	4
7.51	(*)(c)(e)	Petal: color pattern	
	QL	self-colored	1
		shaded	2
		edged	3
		striped	4
		netted	5
		spotted	6
		shaded and striped	7
		shaded and netted	8
		shaded and spotted	9
7.52	(c)(e)	Petal: main color	
	PQ	RHS Colour Chart (indicate reference number)	
7.53	(c)	Varieties with shaded petals only: Petal: extent of shading	

	QN	small	3
		medium	5
		large	7
7.54	(c)(e)	Varieties with shaded petals only: Petal: color of shading	
	PQ	RHS Colour Chart (indicate reference number)	
7.55	(c)(e)	Varieties with edged petals only: Petal: color of edging	
	PQ	RHS Colour Chart (indicate reference number)	
7.56	(c)(e)	Varieties with striped petals only: Petal: color of stripes	
	PQ	RHS Colour Chart (indicate reference number)	
7.57	(c)(e)	Varieties with netted petals only: Petal: color of netting	
	PQ	RHS Colour Chart (indicate reference number)	
7.58	(c)(e)	Varieties with spotted petals only: Petal: color of spots	
	PQ	RHS Colour Chart (indicate reference number)	
7.59	(*)(c)(d)	Lip: length	
	QN	short	3
		medium	5
		long	7
7.60	(*)(c)(d)	Lip: width	
	QN	narrow	3
		medium	5
		broad large	7
7.61	(*)(c)	Lip: presence of lateral lobe	
	QL	absent	1
		present	9
7.62	(*)(+)(c)	Varieties without lateral lobes only: Lip: shape	
	PQ	elliptic	1
		circular	2
		transverse elliptic	3
7.63	(*)(+)(c)	Varieties without lateral lobes only: Lip: overlapping of basal part	
	QL	absent	1
		present	9
7.64	(*)(+)(c)	Varieties with lateral lobes only: Lip: shape of lateral lobe	

PQ	triangular	1
	ovate	2
	narrow	3
	broad	4
7.65 (*) (+) (c) Varieties with lateral lobes only: Lip: shape of apical lobe		
PQ	reniform	1
	rhombic	2
	transverse elliptic	3
	elliptic	4
7.66 (*) (+) (c) Lip: eye		
PQ	type I	1
	type II	2
	type III	3
	type IV	4
	type V	5
	type VI	
7.67 (*) (+) (c) Lip: presence of eye		
QL	absent	1
	present	9
7.68 (*) (+) (c) Lip: shape of eye		
PQ	type I	1
	type II	2
	type III	3
	type IV	4
7.69 (*) (c) (e) Lip: number of colors		
QL	one	1
	two	2
	three	3
	four	4
	five	5
	more than five plus	6
7.70 (*) (c) (e) Lip: color pattern (except middle part, eye and throat)		

QL	self-colored	1
	shaded	2
	edged	3
	striped	4
	netted	5
	spotted	6
	shaded and striped	7
	shaded and netted	8
	shaded and spotted	9
7.71 (c)(e)	Varieties with shaded lips only: Lip: extent of shading	
QN	small	3
	medium	5
	large grand	7
7.72. (c)(e)	Lip: main color	
PQ	RHS Colour Chart (indicate reference number)	
7.73 (+)(c)(e)	Lip: color of middle part	
PQ	RHS Colour Chart (indicate reference number)	
7.74 (c)(e)	Varieties with shaded lips only: Lip: color of shading	
PQ	RHS Colour Chart (indicate reference number)	
7.75 (c)(e)	Varieties with edged lips only: Lip: color of edging	
PQ	RHS Colour Chart (indicate reference number)	
7.76 (c)(e)	Varieties with striped lips only: Lip: color of stripes	
PQ	RHS Colour Chart (indicate reference number)	
7.77 (c)(e)	Varieties with netted lips only: Lip: color of netting	
PQ	RHS Colour Chart (indicate reference number)	
7.78 (c)(e)	Varieties with spotted lips only: Lip: color of spots	
PQ	RHS Colour Chart (indicate reference number)	
7.79 (c)(e)	Varieties with eye only: Lip: color of eye	
PQ	RHS Colour Chart (indicate reference number)	
7.80 (c)(e)	Varieties with different colored throat only: Lip: color of throat	
PQ	RHS Colour Chart (indicate reference number)	
7.81 (*) (c)	Lip: twisting Labelle: torsion	

	QN	absent or weak	1
		intermediate	2
		strong	3
7.82	(*)(c)	Lip: undulation of margin	
	QN	absent or weak	1
		intermediate	2
		strong	3
7.83	(*)(c)	Lip: fringing of margin	
	QN	absent or very fine	1
		fine	3
		medium	5
		coarse	7
7.84	(*)(c)	Lip: callus	
	QL	absent	1
		present	9
7.85	(*)(c)	Lip: pubescence	
	QN	absent or weak	1
		intermediate	2
		strong	3
7.86	(*)(c)	Column: length	
	QN	short	3
		medium	5
		long	7
7.87	(f)	Column: color of anther cap	
	PQ(+)	RHS Colour Chart (indicate reference number)	
7.88	(*)(c)	Time of flowering	
	PQ	very late	1
		early	2
		spring	3
		summer	4
		medium	5

8. Explanations on the Table of Characteristics

8.1 *Explanations covering several characteristics*

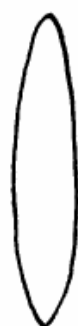
Characteristics containing the following key in the second column of the Table of

Characteristics should be examined as indicated below:

- (a) Observations on the pseudobulb should be made on the flowering pseudobulb.
- (b) Observations on the leaf should be made on the longest leaf of a flowering pseudobulb.
- (c) (c) Observations on the inflorescence and the flower should be made at the time when 50% of the flowers on the inflorescence have opened, on the most recently fully opened flower on the inflorescence before the color starts to fade.
- (d) (d) To be assessed on the most recently opened flower on the inflorescence, before the color starts to fade, at the time when 75% of the flowers on the inflorescence have opened.
- (e) (e) Observations on the color of the sepal, the petal and the lip should be made on the inner side.

8.2 *Explanations for individual characteristics*

Ad. 10: Leaf: shape



1
narrow
elliptic



2
elliptic



3
narrow
ovate



4
narrow
obovate



5
spatulate

Ad. 13: Leaf: type of variegation



1
brindled



2
spotted



3
striped



4
centered



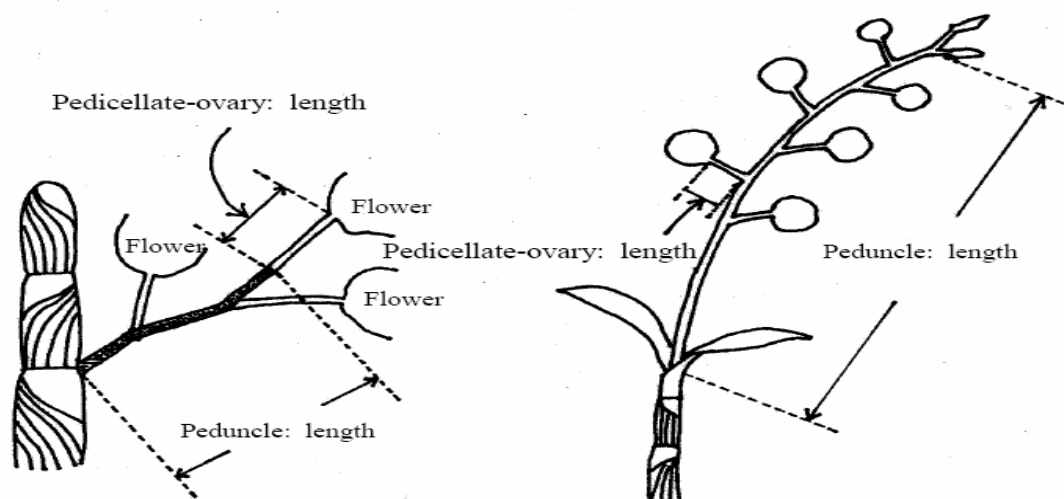
5
edged



variegation

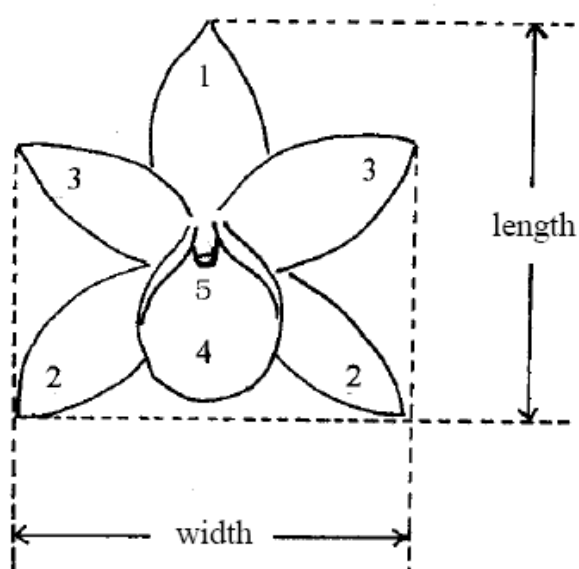
Ad. 20: Peduncle: length

Ad. 23: Pedicellate-ovary: length



Ad. 27: Flower: length in front view

Ad. 28: Flower: width in front view

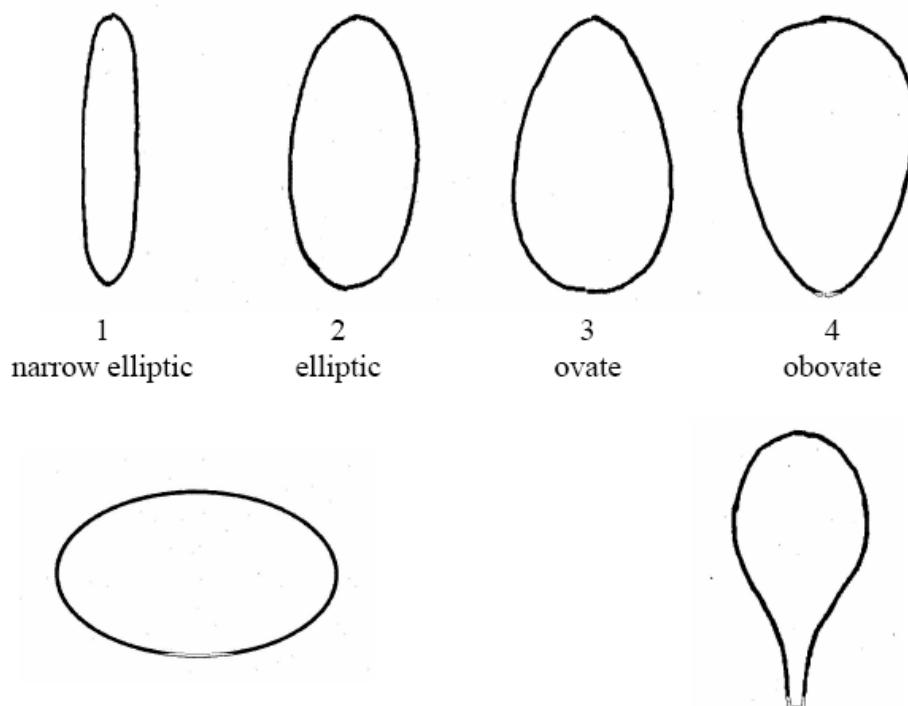


- 1: Dorsal sepal
- 2: Lateral sepal
- 3: Petal
- 4: Lip
- 5: Column

Ad. 33: Dorsal sepal: shape

Ad. 40: Lateral sepal: shape

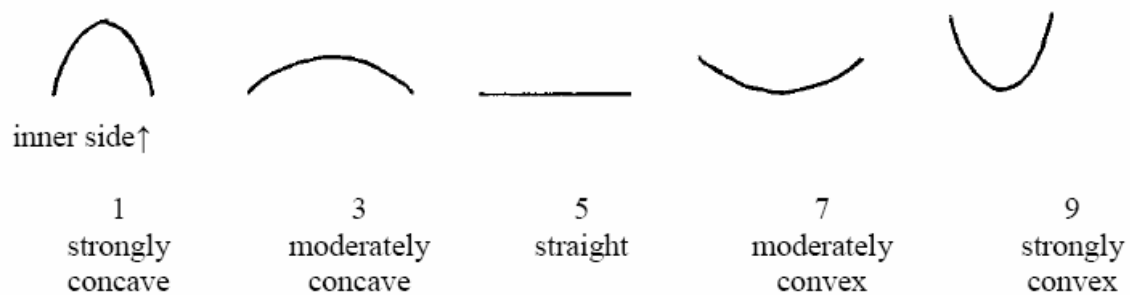
Ad. 56: Petal: shape



Ad. 34: Dorsal sepal: cross section

Ad. 41: Lateral sepal: cross section

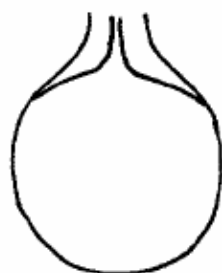
Ad. 57: Petal: cross section



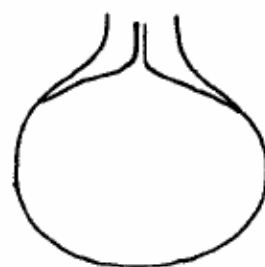
Ad. 72: Varieties without lateral lobes only: Lip: shape



1
elliptic

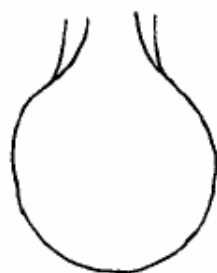


2
circular



3
transverse elliptic

Ad. 73: Varieties without lateral lobes only: Lip: overlapping of basal part

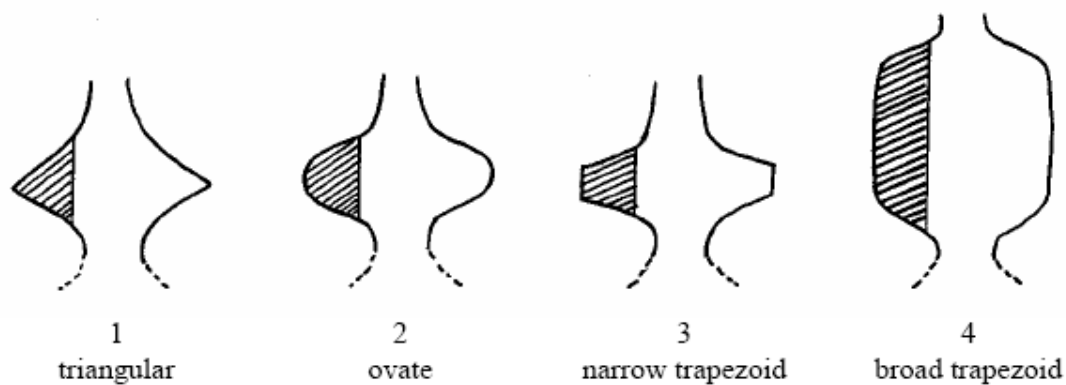


1
absent

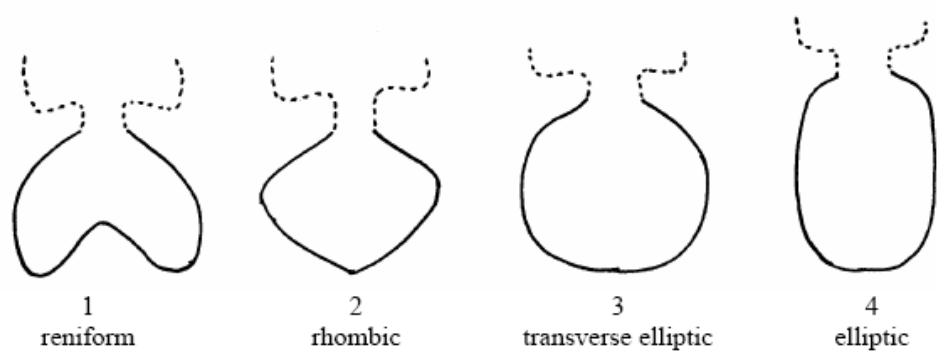


9
present

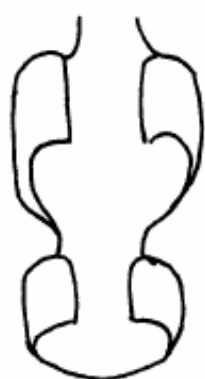
Ad. 74: Varieties with lateral lobes only: Lip: shape of lateral lobe



Ad. 75: Varieties with lateral lobes only: Lip: shape of apical lobe



Ad. 76: Lip: eye



1
type I



2
type II



3
type III



4
type IV



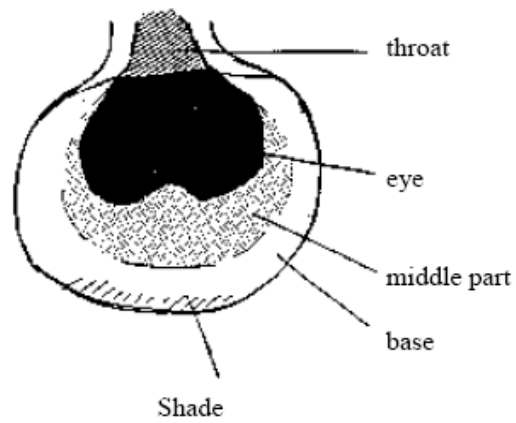
5
type V



6
type VI

Ad. 77: Lip: presence of eye

Ad. 83: Lip: color of middle part



Ad. 78: Lip: shape of eye



1
type I



2
type II



3
type III



4
type IV

Ad. 87: Column: color of anther cap

Observations on the color of the column should be made on the dorsal side.