

ภาคผนวก

ภาคผนวก ก

ขั้นตอนการวางหัวกระจายน้ำดับเพลิง

ขั้นตอนการวางหัวกระจายน้ำดับเพลิง

1. กำหนดพื้นที่ของห้องเก็บสารเคมีไวไฟ ซึ่งในงานวิจัยนี้มีค่าเท่ากับ 85 ตารางเมตร (ยาว 17 เมตร กว้าง 5 เมตร) และเลือก Protective Area จากตารางที่ 5 ที่ค่าต่ำสุด 8.4 ตารางเมตร

2. คำนวณจำนวนหัวกระจายน้ำดับเพลิงจาก

$$\begin{aligned} \text{จำนวนหัวกระจายน้ำดับเพลิง} &= \frac{\text{พื้นที่ที่ต้องการวิเคราะห์/Protective Area}}{8.4} \\ &= 85/8.4 = 10.11 \text{ หัว} \\ \text{ดังนั้นเลือกจำนวนหัว Sprinklers} &= 12 \text{ หัว} \end{aligned}$$

3. ทำการออกแบบวาง หัวกระจายน้ำดับเพลิง โดยมีหัวกระจายน้ำดับเพลิงในแนวเส้นท่อเดียวกัน 2 แถว แถวละ 6 หัว จากนั้นกำหนดระยะระหว่างหัวหัวกระจายน้ำดับเพลิง ดังนี้

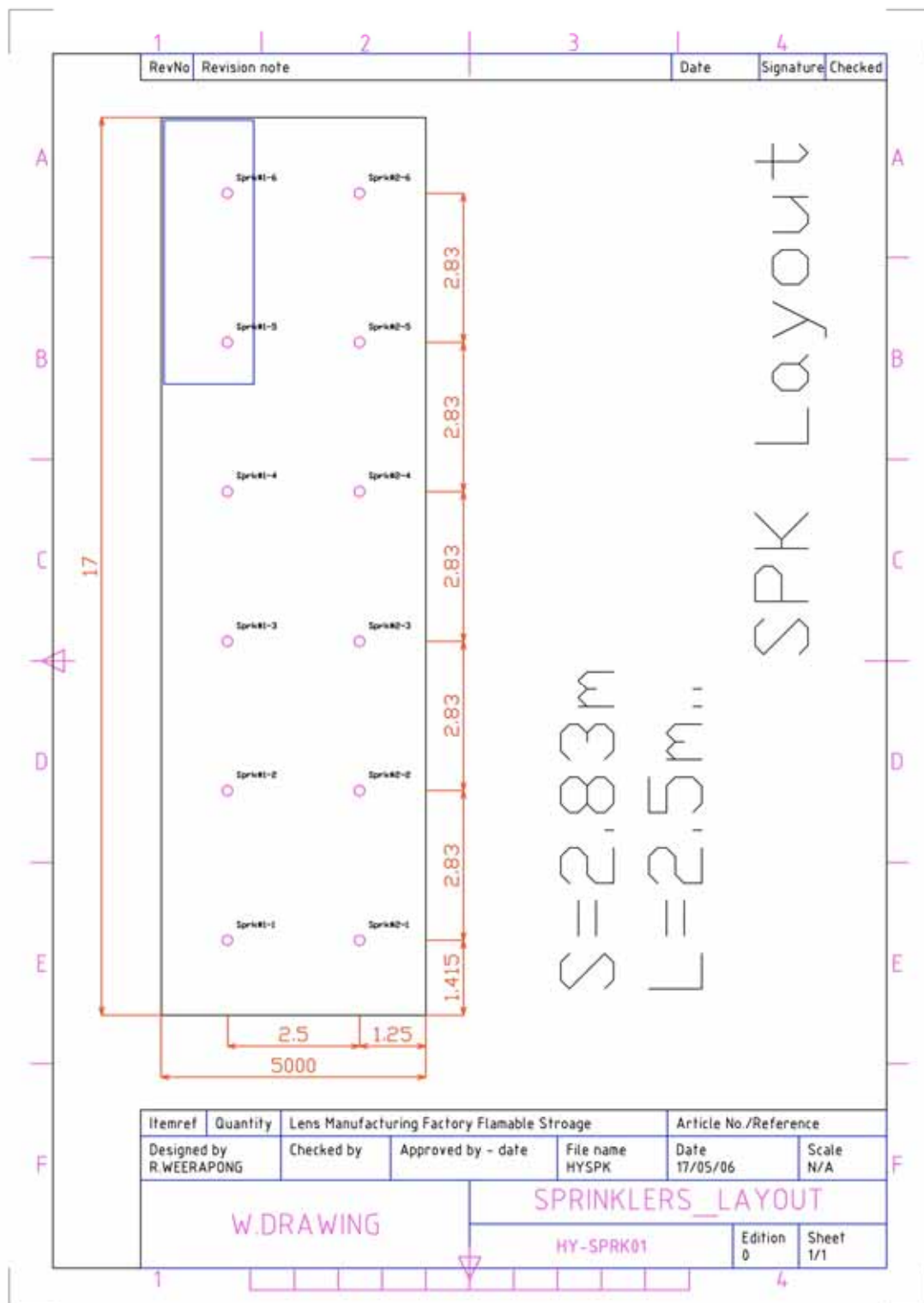
ระยะห่างในแนวเส้นท่อเดียวกัน (Along branch lines :) $S = 17/6 = 2.83$ เมตร (ไม่เกิน 3.7 เมตร ตามตาราง)

$$\text{ระยะจากกำแพงถึงหัวหัวกระจายน้ำดับเพลิง} = S/2 = 2.83/2 = 1.415 \text{ เมตร}$$

ระยะห่างในแนวระหว่างเส้นท่อ (Between branch lines :) $L = 5/2 = 2.5$ เมตร (ไม่เกิน 3.7 เมตร ตามตาราง)

$$\text{ระยะจากกำแพงถึงหัวกระจายน้ำดับเพลิง} = L/2 = 2.5/2 = 1.25 \text{ เมตร}$$

พื้นที่การป้องกันของหัวกระจายน้ำดับเพลิง $A_s = S * L = 2.83 * 2.5 = 7.075$ ตารางเมตร (ไม่เกิน 8.4 ตารางเมตร ตามตาราง)



ภาพผนวกที่ ก1 แสดงแผนผังการติดตั้งหัวกระจายน้ำดับเพลิงในห้องเก็บสารเคมีไวไฟ

ภาคผนวก ข

Input file ของแบบจำลอง ก่อนมีการออกแบบเพื่อควบคุมการเกิดเพลิงไหม้

Input file ของแบบจำลอง ก่อนมีการออกแบบเพื่อควบคุมการเกิดเพลิงไหม้

```

&HEAD CHID='STNsprk' TITLE='StorageNosprkG404054/'
&GRID IBAR=40 JBAR=40 KBAR=54/ testMT
&PDIM XBAR0=1.00 YBAR0=0.00 ZBAR0=0.00 XBAR=20.00 YBAR=7.25 ZBAR=5.00/
testMT
&MISC RESTART=.TRUE. REACTION='METHANOL' DTCORE=2.00/
&TIME TWFIN=600.00/
&ISOF QUANTITY='TEMPERATURE' VALUE(1)=25.00 VALUE(2)=1.000000E003/
*****OBSTRUCTION PART*****
&OBST XB=2.00, 19.00, 2.00, 7.00, 0.00, 0.1000 SURF_ID='CONCRETE'
PERMIT_HOLE=.TRUE. SAWTOOTH=.TRUE. THICKEN=.FALSE./ floor
&OBST XB=13.50, 18.50, 5.00, 5.05, 0.1500, 0.1000 SURF_ID='SHEET METAL'
PERMIT_HOLE=.TRUE. SAWTOOTH=.TRUE. THICKEN=.FALSE./ bundwallFRONT
&OBST XB=13.50, 18.50, 6.45, 6.50, 0.1500, 0.1000 SURF_ID='SHEET METAL'
PERMIT_HOLE=.TRUE. SAWTOOTH=.TRUE. THICKEN=.FALSE./ bundwallrear
&OBST XB=13.50, 13.55, 5.00, 6.45, 0.1000, 0.1500 SURF_ID='SHEET METAL'
PERMIT_HOLE=.TRUE. SAWTOOTH=.TRUE. THICKEN=.FALSE./ bundsideL
&OBST XB=18.45, 18.50, 5.00, 6.45, 0.1000, 0.1500 SURF_ID='SHEET METAL'
PERMIT_HOLE=.TRUE. SAWTOOTH=.TRUE. THICKEN=.FALSE./ bundsideR
&OBST XB=1.00, 20.00, 7.20, 7.22, 2.48, 3.58 SURF_ID='CONCRETE'
PERMIT_HOLE=.TRUE. SAWTOOTH=.TRUE. THICKEN=.FALSE./ rearroof
&OBST XB=1.00, 20.00, 0.83, 0.86, 3.10, 4.91 SURF_ID='CONCRETE'
PERMIT_HOLE=.TRUE. SAWTOOTH=.TRUE. THICKEN=.FALSE./ frontroof
&OBST XB=1.00, 1.03, 7.10, 7.22, 2.48, 3.58 SURF_ID='CONCRETE'
PERMIT_HOLE=.TRUE. SAWTOOTH=.TRUE. THICKEN=.FALSE./ sideroof
&OBST XB=1.00, 1.03, 6.98, 7.10, 2.51, 3.61 SURF_ID='CONCRETE'
PERMIT_HOLE=.TRUE. SAWTOOTH=.TRUE. THICKEN=.FALSE./ sideroof[1]
&OBST XB=1.00, 1.03, 6.86, 6.98, 2.54, 3.64 SURF_ID='CONCRETE'
PERMIT_HOLE=.TRUE. SAWTOOTH=.TRUE. THICKEN=.FALSE./ sideroof2

```

&OBST XB=1.00, 1.03, 6.74, 6.86, 2.56, 3.66 SURF_ID='CONCRETE'
PERMIT_HOLE=.TRUE. SAWTOOTH=.TRUE. THICKEN=.FALSE./ sideroof[3]
&OBST XB=1.00, 1.03, 6.62, 6.74, 2.58, 3.68 SURF_ID='CONCRETE'
PERMIT_HOLE=.TRUE. SAWTOOTH=.TRUE. THICKEN=.FALSE./ sideroof[4]
&OBST XB=1.00, 1.03, 6.50, 6.62, 2.60, 3.70 SURF_ID='CONCRETE'
PERMIT_HOLE=.TRUE. SAWTOOTH=.TRUE. THICKEN=.FALSE./ sideroof[4][1]
&OBST XB=1.00, 1.03, 6.38, 6.50, 2.63, 3.73 SURF_ID='CONCRETE'
PERMIT_HOLE=.TRUE. SAWTOOTH=.TRUE. THICKEN=.FALSE./ sideroof[4][2]
&OBST XB=1.00, 1.03, 6.26, 6.38, 2.66, 3.76 SURF_ID='CONCRETE'
PERMIT_HOLE=.TRUE. SAWTOOTH=.TRUE. THICKEN=.FALSE./ sideroof[4][3]
&OBST XB=1.00, 1.03, 6.14, 6.26, 2.68, 3.78 SURF_ID='CONCRETE'
PERMIT_HOLE=.TRUE. SAWTOOTH=.TRUE. THICKEN=.FALSE./ sideroof[4][4]
&OBST XB=1.00, 1.03, 6.02, 6.14, 2.70, 3.80 SURF_ID='CONCRETE'
PERMIT_HOLE=.TRUE. SAWTOOTH=.TRUE. THICKEN=.FALSE./ sideroof[4][5]
&OBST XB=1.00, 1.03, 5.90, 6.02, 2.73, 3.83 SURF_ID='CONCRETE'
PERMIT_HOLE=.TRUE. SAWTOOTH=.TRUE. THICKEN=.FALSE./ sideroof[4][6]
&OBST XB=1.00, 1.03, 5.78, 5.90, 2.75, 3.85 SURF_ID='CONCRETE'
PERMIT_HOLE=.TRUE. SAWTOOTH=.TRUE. THICKEN=.FALSE./ sideroof[4][7]
&OBST XB=1.00, 1.03, 5.66, 5.78, 2.78, 3.88 SURF_ID='CONCRETE'
PERMIT_HOLE=.TRUE. SAWTOOTH=.TRUE. THICKEN=.FALSE./ sideroof[4][8]
&OBST XB=1.00, 1.03, 5.54, 5.66, 2.80, 3.90 SURF_ID='CONCRETE'
PERMIT_HOLE=.TRUE. SAWTOOTH=.TRUE. THICKEN=.FALSE./ sideroof[4][9]
&OBST XB=1.00, 1.03, 5.42, 5.54, 2.83, 3.93 SURF_ID='CONCRETE'
PERMIT_HOLE=.TRUE. SAWTOOTH=.TRUE. THICKEN=.FALSE./ sideroof[4][10]
&OBST XB=1.00, 1.03, 5.30, 5.42, 2.85, 3.95 SURF_ID='CONCRETE'
PERMIT_HOLE=.TRUE. SAWTOOTH=.TRUE. THICKEN=.FALSE./ sideroof[4][11]
&OBST XB=1.00, 1.03, 5.18, 5.30, 2.88, 3.98 SURF_ID='CONCRETE'
PERMIT_HOLE=.TRUE. SAWTOOTH=.TRUE. THICKEN=.FALSE./ sideroof[4][12]
&OBST XB=1.00, 1.03, 5.06, 5.18, 2.90, 4.00 SURF_ID='CONCRETE'
PERMIT_HOLE=.TRUE. SAWTOOTH=.TRUE. THICKEN=.FALSE./ sideroof[4][13]

&OBST XB=1.00, 1.03, 4.94, 5.06, 2.93, 4.03 SURF_ID='CONCRETE'
PERMIT_HOLE=.TRUE. SAWTOOTH=.TRUE. THICKEN=.FALSE./ sideroof[4][14]
&OBST XB=1.00, 1.03, 4.82, 4.94, 2.95, 4.06 SURF_ID='CONCRETE'
PERMIT_HOLE=.TRUE. SAWTOOTH=.TRUE. THICKEN=.FALSE./ sideroof[4][15]
&OBST XB=1.00, 1.03, 4.70, 4.82, 2.98, 4.08 SURF_ID='CONCRETE'
PERMIT_HOLE=.TRUE. SAWTOOTH=.TRUE. THICKEN=.FALSE./ sideroof[4][16]
&OBST XB=1.00, 1.03, 4.58, 4.70, 3.00, 4.10 SURF_ID='CONCRETE'
PERMIT_HOLE=.TRUE. SAWTOOTH=.TRUE. THICKEN=.FALSE./ sideroof[4][17]
&OBST XB=1.00, 1.03, 4.46, 4.58, 3.03, 4.13 SURF_ID='CONCRETE'
PERMIT_HOLE=.TRUE. SAWTOOTH=.TRUE. THICKEN=.FALSE./ sideroof[4][18]
&OBST XB=1.00, 1.03, 4.34, 4.46, 3.05, 4.15 SURF_ID='CONCRETE'
PERMIT_HOLE=.TRUE. SAWTOOTH=.TRUE. THICKEN=.FALSE./ sideroof[4][19]
&OBST XB=1.00, 1.03, 4.22, 4.34, 3.08, 4.18 SURF_ID='CONCRETE'
PERMIT_HOLE=.TRUE. SAWTOOTH=.TRUE. THICKEN=.FALSE./ sideroof[4][20]
&OBST XB=1.00, 1.03, 4.10, 4.22, 3.10, 4.20 SURF_ID='CONCRETE'
PERMIT_HOLE=.TRUE. SAWTOOTH=.TRUE. THICKEN=.FALSE./ sideroof[4][21]
&OBST XB=1.00, 1.03, 3.98, 4.10, 3.13, 4.23 SURF_ID='CONCRETE'
PERMIT_HOLE=.TRUE. SAWTOOTH=.TRUE. THICKEN=.FALSE./ sideroof[4][22]
&OBST XB=1.00, 1.03, 3.86, 3.98, 3.16, 4.26 SURF_ID='CONCRETE'
PERMIT_HOLE=.TRUE. SAWTOOTH=.TRUE. THICKEN=.FALSE./ sideroof[4][23]
&OBST XB=1.00, 1.03, 3.74, 3.86, 3.18, 4.28 SURF_ID='CONCRETE'
PERMIT_HOLE=.TRUE. SAWTOOTH=.TRUE. THICKEN=.FALSE./ sideroof[4][24]
&OBST XB=1.00, 1.03, 3.62, 3.74, 3.20, 4.30 SURF_ID='CONCRETE'
PERMIT_HOLE=.TRUE. SAWTOOTH=.TRUE. THICKEN=.FALSE./ sideroof[4][25]
&OBST XB=1.00, 1.03, 3.50, 3.62, 3.23, 4.33 SURF_ID='CONCRETE'
PERMIT_HOLE=.TRUE. SAWTOOTH=.TRUE. THICKEN=.FALSE./ sideroof[4][26]
&OBST XB=1.00, 1.03, 3.38, 3.50, 3.26, 4.35 SURF_ID='CONCRETE'
PERMIT_HOLE=.TRUE. SAWTOOTH=.TRUE. THICKEN=.FALSE./ sideroof[4][27]
&OBST XB=1.00, 1.03, 3.26, 3.38, 3.28, 4.38 SURF_ID='CONCRETE'
PERMIT_HOLE=.TRUE. SAWTOOTH=.TRUE. THICKEN=.FALSE./ sideroof[4][28]

&OBST XB=1.00, 1.03, 3.14, 3.26, 3.30, 4.40 SURF_ID='CONCRETE'
PERMIT_HOLE=.TRUE. SAWTOOTH=.TRUE. THICKEN=.FALSE./ sideroof[4][29]
&OBST XB=1.00, 1.03, 3.02, 3.14, 3.33, 4.43 SURF_ID='CONCRETE'
PERMIT_HOLE=.TRUE. SAWTOOTH=.TRUE. THICKEN=.FALSE./ sideroof[4][30]
&OBST XB=1.00, 1.03, 2.90, 3.02, 3.35, 4.46 SURF_ID='CONCRETE'
PERMIT_HOLE=.TRUE. SAWTOOTH=.TRUE. THICKEN=.FALSE./ sideroof[4][31]
&OBST XB=1.00, 1.03, 2.78, 2.90, 3.38, 4.48 SURF_ID='CONCRETE'
PERMIT_HOLE=.TRUE. SAWTOOTH=.TRUE. THICKEN=.FALSE./ sideroof[4][32]
&OBST XB=1.00, 1.03, 2.66, 2.78, 3.40, 4.50 SURF_ID='CONCRETE'
PERMIT_HOLE=.TRUE. SAWTOOTH=.TRUE. THICKEN=.FALSE./ sideroof[4][33]
&OBST XB=1.00, 1.03, 2.54, 2.66, 3.43, 4.53 SURF_ID='CONCRETE'
PERMIT_HOLE=.TRUE. SAWTOOTH=.TRUE. THICKEN=.FALSE./ sideroof[4][34]
&OBST XB=1.00, 1.03, 2.42, 2.54, 3.45, 4.56 SURF_ID='CONCRETE'
PERMIT_HOLE=.TRUE. SAWTOOTH=.TRUE. THICKEN=.FALSE./ sideroof[4][35]
&OBST XB=1.00, 1.03, 2.30, 2.42, 3.48, 4.58 SURF_ID='CONCRETE'
PERMIT_HOLE=.TRUE. SAWTOOTH=.TRUE. THICKEN=.FALSE./ sideroof[4][36]
&OBST XB=1.00, 1.03, 2.18, 2.30, 3.50, 4.60 SURF_ID='CONCRETE'
PERMIT_HOLE=.TRUE. SAWTOOTH=.TRUE. THICKEN=.FALSE./ sideroof[4][37]
&OBST XB=1.00, 1.03, 2.06, 2.18, 3.53, 4.63 SURF_ID='CONCRETE'
PERMIT_HOLE=.TRUE. SAWTOOTH=.TRUE. THICKEN=.FALSE./ sideroof[4][38]
&OBST XB=1.00, 1.03, 1.94, 2.06, 3.55, 4.65 SURF_ID='CONCRETE'
PERMIT_HOLE=.TRUE. SAWTOOTH=.TRUE. THICKEN=.FALSE./ sideroof[4][39]
&OBST XB=1.00, 1.03, 1.82, 1.94, 3.58, 4.68 SURF_ID='CONCRETE'
PERMIT_HOLE=.TRUE. SAWTOOTH=.TRUE. THICKEN=.FALSE./ sideroof[4][40]
&OBST XB=1.00, 1.03, 1.70, 1.82, 3.60, 4.70 SURF_ID='CONCRETE'
PERMIT_HOLE=.TRUE. SAWTOOTH=.TRUE. THICKEN=.FALSE./ sideroof[4][41]
&OBST XB=1.00, 1.03, 1.58, 1.70, 3.63, 4.73 SURF_ID='CONCRETE'
PERMIT_HOLE=.TRUE. SAWTOOTH=.TRUE. THICKEN=.FALSE./ sideroof[4][42]
&OBST XB=1.00, 1.03, 1.46, 1.58, 3.65, 4.76 SURF_ID='CONCRETE'
PERMIT_HOLE=.TRUE. SAWTOOTH=.TRUE. THICKEN=.FALSE./ sideroof[4][43]

&OBST XB=1.00, 1.03, 1.34, 1.46, 3.68, 4.78 SURF_ID='CONCRETE'
PERMIT_HOLE=.TRUE. SAWTOOTH=.TRUE. THICKEN=.FALSE./ sideroof[4][44]
&OBST XB=1.00, 1.03, 1.22, 1.34, 3.70, 4.80 SURF_ID='CONCRETE'
PERMIT_HOLE=.TRUE. SAWTOOTH=.TRUE. THICKEN=.FALSE./ sideroof[4][45]
&OBST XB=1.00, 1.03, 1.10, 1.22, 3.73, 4.83 SURF_ID='CONCRETE'
PERMIT_HOLE=.TRUE. SAWTOOTH=.TRUE. THICKEN=.FALSE./ sideroof[4][46]
&OBST XB=1.00, 1.03, 0.98, 1.10, 3.76, 4.85 SURF_ID='CONCRETE'
PERMIT_HOLE=.TRUE. SAWTOOTH=.TRUE. THICKEN=.FALSE./ sideroof[4][47]
&OBST XB=1.00, 1.03, 0.86, 0.98, 3.78, 4.88 SURF_ID='CONCRETE'
PERMIT_HOLE=.TRUE. SAWTOOTH=.TRUE. THICKEN=.FALSE./ sideroof[4][48]
&OBST XB=19.97, 20.00, 7.10, 7.22, 2.48, 3.58 SURF_ID='CONCRETE'
PERMIT_HOLE=.TRUE. SAWTOOTH=.TRUE. THICKEN=.FALSE./ sideroof
&OBST XB=19.97, 20.00, 6.98, 7.10, 2.51, 3.61 SURF_ID='CONCRETE'
PERMIT_HOLE=.TRUE. SAWTOOTH=.TRUE. THICKEN=.FALSE./ sideroof[1]
&OBST XB=19.97, 20.00, 6.86, 6.98, 2.54, 3.64 SURF_ID='CONCRETE'
PERMIT_HOLE=.TRUE. SAWTOOTH=.TRUE. THICKEN=.FALSE./ sideroof2
&OBST XB=19.97, 20.00, 6.74, 6.86, 2.56, 3.66 SURF_ID='CONCRETE'
PERMIT_HOLE=.TRUE. SAWTOOTH=.TRUE. THICKEN=.FALSE./ sideroof[3]
&OBST XB=19.97, 20.00, 6.62, 6.74, 2.58, 3.68 SURF_ID='CONCRETE'
PERMIT_HOLE=.TRUE. SAWTOOTH=.TRUE. THICKEN=.FALSE./ sideroof[4]
&OBST XB=19.97, 20.00, 6.50, 6.62, 2.60, 3.70 SURF_ID='CONCRETE'
PERMIT_HOLE=.TRUE. SAWTOOTH=.TRUE. THICKEN=.FALSE./ sideroof[4][1]
&OBST XB=19.97, 20.00, 6.38, 6.50, 2.63, 3.73 SURF_ID='CONCRETE'
PERMIT_HOLE=.TRUE. SAWTOOTH=.TRUE. THICKEN=.FALSE./ sideroof[4][2]
&OBST XB=19.97, 20.00, 6.26, 6.38, 2.66, 3.76 SURF_ID='CONCRETE'
PERMIT_HOLE=.TRUE. SAWTOOTH=.TRUE. THICKEN=.FALSE./ sideroof[4][3]
&OBST XB=19.97, 20.00, 6.14, 6.26, 2.68, 3.78 SURF_ID='CONCRETE'
PERMIT_HOLE=.TRUE. SAWTOOTH=.TRUE. THICKEN=.FALSE./ sideroof[4][4]
&OBST XB=19.97, 20.00, 6.02, 6.14, 2.70, 3.80 SURF_ID='CONCRETE'
PERMIT_HOLE=.TRUE. SAWTOOTH=.TRUE. THICKEN=.FALSE./ sideroof[4][5]

&OBST XB=19.97, 20.00, 5.90, 6.02, 2.73, 3.83 SURF_ID='CONCRETE'
PERMIT_HOLE=.TRUE. SAWTOOTH=.TRUE. THICKEN=.FALSE./ sideroof[4][6]
&OBST XB=19.97, 20.00, 5.78, 5.90, 2.75, 3.85 SURF_ID='CONCRETE'
PERMIT_HOLE=.TRUE. SAWTOOTH=.TRUE. THICKEN=.FALSE./ sideroof[4][7]
&OBST XB=19.97, 20.00, 5.66, 5.78, 2.78, 3.88 SURF_ID='CONCRETE'
PERMIT_HOLE=.TRUE. SAWTOOTH=.TRUE. THICKEN=.FALSE./ sideroof[4][8]
&OBST XB=19.97, 20.00, 5.54, 5.66, 2.80, 3.90 SURF_ID='CONCRETE'
PERMIT_HOLE=.TRUE. SAWTOOTH=.TRUE. THICKEN=.FALSE./ sideroof[4][9]
&OBST XB=19.97, 20.00, 5.42, 5.54, 2.83, 3.93 SURF_ID='CONCRETE'
PERMIT_HOLE=.TRUE. SAWTOOTH=.TRUE. THICKEN=.FALSE./ sideroof[4][10]
&OBST XB=19.97, 20.00, 5.30, 5.42, 2.85, 3.95 SURF_ID='CONCRETE'
PERMIT_HOLE=.TRUE. SAWTOOTH=.TRUE. THICKEN=.FALSE./ sideroof[4][11]
&OBST XB=19.97, 20.00, 5.18, 5.30, 2.88, 3.98 SURF_ID='CONCRETE'
PERMIT_HOLE=.TRUE. SAWTOOTH=.TRUE. THICKEN=.FALSE./ sideroof[4][12]
&OBST XB=19.97, 20.00, 5.06, 5.18, 2.90, 4.00 SURF_ID='CONCRETE'
PERMIT_HOLE=.TRUE. SAWTOOTH=.TRUE. THICKEN=.FALSE./ sideroof[4][13]
&OBST XB=19.97, 20.00, 4.94, 5.06, 2.93, 4.03 SURF_ID='CONCRETE'
PERMIT_HOLE=.TRUE. SAWTOOTH=.TRUE. THICKEN=.FALSE./ sideroof[4][14]
&OBST XB=19.97, 20.00, 4.82, 4.94, 2.95, 4.06 SURF_ID='CONCRETE'
PERMIT_HOLE=.TRUE. SAWTOOTH=.TRUE. THICKEN=.FALSE./ sideroof[4][15]
&OBST XB=19.97, 20.00, 4.70, 4.82, 2.98, 4.08 SURF_ID='CONCRETE'
PERMIT_HOLE=.TRUE. SAWTOOTH=.TRUE. THICKEN=.FALSE./ sideroof[4][16]
&OBST XB=19.97, 20.00, 4.58, 4.70, 3.00, 4.10 SURF_ID='CONCRETE'
PERMIT_HOLE=.TRUE. SAWTOOTH=.TRUE. THICKEN=.FALSE./ sideroof[4][17]
&OBST XB=19.97, 20.00, 4.46, 4.58, 3.03, 4.13 SURF_ID='CONCRETE'
PERMIT_HOLE=.TRUE. SAWTOOTH=.TRUE. THICKEN=.FALSE./ sideroof[4][18]
&OBST XB=19.97, 20.00, 4.34, 4.46, 3.05, 4.15 SURF_ID='CONCRETE'
PERMIT_HOLE=.TRUE. SAWTOOTH=.TRUE. THICKEN=.FALSE./ sideroof[4][19]
&OBST XB=19.97, 20.00, 4.22, 4.34, 3.08, 4.18 SURF_ID='CONCRETE'
PERMIT_HOLE=.TRUE. SAWTOOTH=.TRUE. THICKEN=.FALSE./ sideroof[4][20]

&OBST XB=19.97, 20.00, 4.10, 4.22, 3.10, 4.20 SURF_ID='CONCRETE'
PERMIT_HOLE=.TRUE. SAWTOOTH=.TRUE. THICKEN=.FALSE./ sideroof[4][21]
&OBST XB=19.97, 20.00, 3.98, 4.10, 3.13, 4.23 SURF_ID='CONCRETE'
PERMIT_HOLE=.TRUE. SAWTOOTH=.TRUE. THICKEN=.FALSE./ sideroof[4][22]
&OBST XB=19.97, 20.00, 3.86, 3.98, 3.16, 4.26 SURF_ID='CONCRETE'
PERMIT_HOLE=.TRUE. SAWTOOTH=.TRUE. THICKEN=.FALSE./ sideroof[4][23]
&OBST XB=19.97, 20.00, 3.74, 3.86, 3.18, 4.28 SURF_ID='CONCRETE'
PERMIT_HOLE=.TRUE. SAWTOOTH=.TRUE. THICKEN=.FALSE./ sideroof[4][24]
&OBST XB=19.97, 20.00, 3.62, 3.74, 3.20, 4.30 SURF_ID='CONCRETE'
PERMIT_HOLE=.TRUE. SAWTOOTH=.TRUE. THICKEN=.FALSE./ sideroof[4][25]
&OBST XB=19.97, 20.00, 3.50, 3.62, 3.23, 4.33 SURF_ID='CONCRETE'
PERMIT_HOLE=.TRUE. SAWTOOTH=.TRUE. THICKEN=.FALSE./ sideroof[4][26]
&OBST XB=19.97, 20.00, 3.38, 3.50, 3.26, 4.35 SURF_ID='CONCRETE'
PERMIT_HOLE=.TRUE. SAWTOOTH=.TRUE. THICKEN=.FALSE./ sideroof[4][27]
&OBST XB=19.97, 20.00, 3.26, 3.38, 3.28, 4.38 SURF_ID='CONCRETE'
PERMIT_HOLE=.TRUE. SAWTOOTH=.TRUE. THICKEN=.FALSE./ sideroof[4][28]
&OBST XB=19.97, 20.00, 3.14, 3.26, 3.30, 4.40 SURF_ID='CONCRETE'
PERMIT_HOLE=.TRUE. SAWTOOTH=.TRUE. THICKEN=.FALSE./ sideroof[4][29]
&OBST XB=19.97, 20.00, 3.02, 3.14, 3.33, 4.43 SURF_ID='CONCRETE'
PERMIT_HOLE=.TRUE. SAWTOOTH=.TRUE. THICKEN=.FALSE./ sideroof[4][30]
&OBST XB=19.97, 20.00, 2.90, 3.02, 3.35, 4.46 SURF_ID='CONCRETE'
PERMIT_HOLE=.TRUE. SAWTOOTH=.TRUE. THICKEN=.FALSE./ sideroof[4][31]
&OBST XB=19.97, 20.00, 2.78, 2.90, 3.38, 4.48 SURF_ID='CONCRETE'
PERMIT_HOLE=.TRUE. SAWTOOTH=.TRUE. THICKEN=.FALSE./ sideroof[4][32]
&OBST XB=19.97, 20.00, 2.66, 2.78, 3.40, 4.50 SURF_ID='CONCRETE'
PERMIT_HOLE=.TRUE. SAWTOOTH=.TRUE. THICKEN=.FALSE./ sideroof[4][33]
&OBST XB=19.97, 20.00, 2.54, 2.66, 3.43, 4.53 SURF_ID='CONCRETE'
PERMIT_HOLE=.TRUE. SAWTOOTH=.TRUE. THICKEN=.FALSE./ sideroof[4][34]
&OBST XB=19.97, 20.00, 2.42, 2.54, 3.45, 4.56 SURF_ID='CONCRETE'
PERMIT_HOLE=.TRUE. SAWTOOTH=.TRUE. THICKEN=.FALSE./ sideroof[4][35]

&OBST XB=19.97, 20.00, 2.30, 2.42, 3.48, 4.58 SURF_ID='CONCRETE'
 PERMIT_HOLE=.TRUE. SAWTOOTH=.TRUE. THICKEN=.FALSE./ sideroof[4][36]
 &OBST XB=19.97, 20.00, 2.18, 2.30, 3.50, 4.60 SURF_ID='CONCRETE'
 PERMIT_HOLE=.TRUE. SAWTOOTH=.TRUE. THICKEN=.FALSE./ sideroof[4][37]
 &OBST XB=19.97, 20.00, 2.06, 2.18, 3.53, 4.63 SURF_ID='CONCRETE'
 PERMIT_HOLE=.TRUE. SAWTOOTH=.TRUE. THICKEN=.FALSE./ sideroof[4][38]
 &OBST XB=19.97, 20.00, 1.94, 2.06, 3.55, 4.65 SURF_ID='CONCRETE'
 PERMIT_HOLE=.TRUE. SAWTOOTH=.TRUE. THICKEN=.FALSE./ sideroof[4][39]
 &OBST XB=19.97, 20.00, 1.82, 1.94, 3.58, 4.68 SURF_ID='CONCRETE'
 PERMIT_HOLE=.TRUE. SAWTOOTH=.TRUE. THICKEN=.FALSE./ sideroof[4][40]
 &OBST XB=19.97, 20.00, 1.70, 1.82, 3.60, 4.70 SURF_ID='CONCRETE'
 PERMIT_HOLE=.TRUE. SAWTOOTH=.TRUE. THICKEN=.FALSE./ sideroof[4][41]
 &OBST XB=19.97, 20.00, 1.58, 1.70, 3.63, 4.73 SURF_ID='CONCRETE'
 PERMIT_HOLE=.TRUE. SAWTOOTH=.TRUE. THICKEN=.FALSE./ sideroof[4][42]
 &OBST XB=19.97, 20.00, 1.46, 1.58, 3.65, 4.76 SURF_ID='CONCRETE'
 PERMIT_HOLE=.TRUE. SAWTOOTH=.TRUE. THICKEN=.FALSE./ sideroof[4][43]
 &OBST XB=19.97, 20.00, 1.34, 1.46, 3.68, 4.78 SURF_ID='CONCRETE'
 PERMIT_HOLE=.TRUE. SAWTOOTH=.TRUE. THICKEN=.FALSE./ sideroof[4][44]
 &OBST XB=19.97, 20.00, 1.22, 1.34, 3.70, 4.80 SURF_ID='CONCRETE'
 PERMIT_HOLE=.TRUE. SAWTOOTH=.TRUE. THICKEN=.FALSE./ sideroof[4][45]
 &OBST XB=19.97, 20.00, 1.10, 1.22, 3.73, 4.83 SURF_ID='CONCRETE'
 PERMIT_HOLE=.TRUE. SAWTOOTH=.TRUE. THICKEN=.FALSE./ sideroof[4][46]
 &OBST XB=19.97, 20.00, 0.98, 1.10, 3.76, 4.85 SURF_ID='CONCRETE'
 PERMIT_HOLE=.TRUE. SAWTOOTH=.TRUE. THICKEN=.FALSE./ sideroof[4][47]
 &OBST XB=19.97, 20.00, 0.86, 0.98, 3.78, 4.88 SURF_ID='CONCRETE'
 PERMIT_HOLE=.TRUE. SAWTOOTH=.TRUE. THICKEN=.FALSE./ sideroof[4][48]
 &OBST XB=1.00, 20.00, 4.10, 4.22, 4.21, 4.24 SURF_ID='CONCRETE'
 PERMIT_HOLE=.TRUE. SAWTOOTH=.TRUE. THICKEN=.FALSE./ Troof2[27]
 &OBST XB=1.00, 20.00, 3.50, 3.62, 4.34, 4.36 SURF_ID='CONCRETE'
 PERMIT_HOLE=.TRUE. SAWTOOTH=.TRUE. THICKEN=.FALSE./ Troof2[22]

&OBST XB=1.00, 20.00, 1.58, 1.70, 4.73, 4.76 SURF_ID='CONCRETE'
PERMIT_HOLE=.TRUE. SAWTOOTH=.TRUE. THICKEN=.FALSE./ Troof2[6]
&OBST XB=1.00, 20.00, 5.06, 5.18, 4.01, 4.04 SURF_ID='CONCRETE'
PERMIT_HOLE=.TRUE. SAWTOOTH=.TRUE. THICKEN=.FALSE./ Troof2[35]
&OBST XB=1.00, 20.00, 6.74, 6.86, 3.66, 3.68 SURF_ID='CONCRETE'
PERMIT_HOLE=.TRUE. SAWTOOTH=.TRUE. THICKEN=.FALSE./ Troof2[49]
&OBST XB=1.00, 20.00, 6.50, 6.62, 3.71, 3.74 SURF_ID='CONCRETE'
PERMIT_HOLE=.TRUE. SAWTOOTH=.TRUE. THICKEN=.FALSE./ Troof2[47]
&OBST XB=1.00, 20.00, 1.10, 1.22, 4.84, 4.86 SURF_ID='CONCRETE'
PERMIT_HOLE=.TRUE. SAWTOOTH=.TRUE. THICKEN=.FALSE./ Troof2[2]
&OBST XB=1.00, 20.00, 7.10, 7.22, 3.58, 3.61 SURF_ID='CONCRETE'
PERMIT_HOLE=.TRUE. SAWTOOTH=.TRUE. THICKEN=.FALSE./ Troof2[52]
&OBST XB=1.00, 20.00, 5.30, 5.42, 3.96, 3.99 SURF_ID='CONCRETE'
PERMIT_HOLE=.TRUE. SAWTOOTH=.TRUE. THICKEN=.FALSE./ Troof2[37]
&OBST XB=1.00, 20.00, 2.18, 2.30, 4.61, 4.64 SURF_ID='CONCRETE'
PERMIT_HOLE=.TRUE. SAWTOOTH=.TRUE. THICKEN=.FALSE./ Troof2[11]
&OBST XB=1.00, 20.00, 6.98, 7.10, 3.61, 3.64 SURF_ID='CONCRETE'
PERMIT_HOLE=.TRUE. SAWTOOTH=.TRUE. THICKEN=.FALSE./ Troof2[51]
&OBST XB=1.00, 20.00, 3.02, 3.14, 4.44, 4.46 SURF_ID='CONCRETE'
PERMIT_HOLE=.TRUE. SAWTOOTH=.TRUE. THICKEN=.FALSE./ Troof2[18]
&OBST XB=1.00, 20.00, 1.70, 1.82, 4.71, 4.74 SURF_ID='CONCRETE'
PERMIT_HOLE=.TRUE. SAWTOOTH=.TRUE. THICKEN=.FALSE./ Troof2[7]
&OBST XB=1.00, 20.00, 4.46, 4.58, 4.14, 4.16 SURF_ID='CONCRETE'
PERMIT_HOLE=.TRUE. SAWTOOTH=.TRUE. THICKEN=.FALSE./ Troof2[30]
&OBST XB=1.00, 20.00, 6.02, 6.14, 3.81, 3.84 SURF_ID='CONCRETE'
PERMIT_HOLE=.TRUE. SAWTOOTH=.TRUE. THICKEN=.FALSE./ Troof2[43]
&OBST XB=1.00, 20.00, 0.86, 0.98, 4.88, 4.91 SURF_ID='CONCRETE'
PERMIT_HOLE=.TRUE. SAWTOOTH=.TRUE. THICKEN=.FALSE./ Troof2
&OBST XB=1.00, 20.00, 5.54, 5.66, 3.91, 3.94 SURF_ID='CONCRETE'
PERMIT_HOLE=.TRUE. SAWTOOTH=.TRUE. THICKEN=.FALSE./ Troof2[39]

&OBST XB=1.00, 20.00, 6.26, 6.38, 3.76, 3.78 SURF_ID='CONCRETE'
PERMIT_HOLE=.TRUE. SAWTOOTH=.TRUE. THICKEN=.FALSE./ Troof2[45]
&OBST XB=1.00, 20.00, 1.82, 1.94, 4.68, 4.71 SURF_ID='CONCRETE'
PERMIT_HOLE=.TRUE. SAWTOOTH=.TRUE. THICKEN=.FALSE./ Troof2[8]
&OBST XB=1.00, 20.00, 6.86, 6.98, 3.64, 3.66 SURF_ID='CONCRETE'
PERMIT_HOLE=.TRUE. SAWTOOTH=.TRUE. THICKEN=.FALSE./ Troof2[50]
&OBST XB=1.00, 20.00, 2.42, 2.54, 4.56, 4.58 SURF_ID='CONCRETE'
PERMIT_HOLE=.TRUE. SAWTOOTH=.TRUE. THICKEN=.FALSE./ Troof2[13]
&OBST XB=1.00, 20.00, 2.66, 2.78, 4.51, 4.54 SURF_ID='CONCRETE'
PERMIT_HOLE=.TRUE. SAWTOOTH=.TRUE. THICKEN=.FALSE./ Troof2[15]
&OBST XB=1.00, 20.00, 2.90, 3.02, 4.46, 4.48 SURF_ID='CONCRETE'
PERMIT_HOLE=.TRUE. SAWTOOTH=.TRUE. THICKEN=.FALSE./ Troof2[17]
&OBST XB=1.00, 20.00, 5.90, 6.02, 3.84, 3.86 SURF_ID='CONCRETE'
PERMIT_HOLE=.TRUE. SAWTOOTH=.TRUE. THICKEN=.FALSE./ Troof2[42]
&OBST XB=1.00, 20.00, 6.38, 6.50, 3.73, 3.76 SURF_ID='CONCRETE'
PERMIT_HOLE=.TRUE. SAWTOOTH=.TRUE. THICKEN=.FALSE./ Troof2[46]
&OBST XB=1.00, 20.00, 1.22, 1.34, 4.81, 4.84 SURF_ID='CONCRETE'
PERMIT_HOLE=.TRUE. SAWTOOTH=.TRUE. THICKEN=.FALSE./ Troof2[3]
&OBST XB=1.00, 20.00, 2.78, 2.90, 4.48, 4.51 SURF_ID='CONCRETE'
PERMIT_HOLE=.TRUE. SAWTOOTH=.TRUE. THICKEN=.FALSE./ Troof2[16]
&OBST XB=1.00, 20.00, 2.30, 2.42, 4.58, 4.61 SURF_ID='CONCRETE'
PERMIT_HOLE=.TRUE. SAWTOOTH=.TRUE. THICKEN=.FALSE./ Troof2[12]
&OBST XB=1.00, 20.00, 4.70, 4.82, 4.08, 4.11 SURF_ID='CONCRETE'
PERMIT_HOLE=.TRUE. SAWTOOTH=.TRUE. THICKEN=.FALSE./ Troof2[32]
&OBST XB=1.00, 20.00, 5.78, 5.90, 3.86, 3.88 SURF_ID='CONCRETE'
PERMIT_HOLE=.TRUE. SAWTOOTH=.TRUE. THICKEN=.FALSE./ Troof2[41]
&OBST XB=1.00, 20.00, 1.46, 1.58, 4.76, 4.78 SURF_ID='CONCRETE'
PERMIT_HOLE=.TRUE. SAWTOOTH=.TRUE. THICKEN=.FALSE./ Troof2[5]
&OBST XB=1.00, 20.00, 6.62, 6.74, 3.68, 3.71 SURF_ID='CONCRETE'
PERMIT_HOLE=.TRUE. SAWTOOTH=.TRUE. THICKEN=.FALSE./ Troof2[48]

&OBST XB=1.00, 20.00, 4.58, 4.70, 4.11, 4.14 SURF_ID='CONCRETE'
PERMIT_HOLE=.TRUE. SAWTOOTH=.TRUE. THICKEN=.FALSE./ Troof2[31]
&OBST XB=1.00, 20.00, 3.98, 4.10, 4.23, 4.26 SURF_ID='CONCRETE'
PERMIT_HOLE=.TRUE. SAWTOOTH=.TRUE. THICKEN=.FALSE./ Troof2[26]
&OBST XB=1.00, 20.00, 2.54, 2.66, 4.54, 4.56 SURF_ID='CONCRETE'
PERMIT_HOLE=.TRUE. SAWTOOTH=.TRUE. THICKEN=.FALSE./ Troof2[14]
&OBST XB=1.00, 20.00, 3.14, 3.26, 4.41, 4.44 SURF_ID='CONCRETE'
PERMIT_HOLE=.TRUE. SAWTOOTH=.TRUE. THICKEN=.FALSE./ Troof2[19]
&OBST XB=1.00, 20.00, 5.66, 5.78, 3.88, 3.91 SURF_ID='CONCRETE'
PERMIT_HOLE=.TRUE. SAWTOOTH=.TRUE. THICKEN=.FALSE./ Troof2[40]
&OBST XB=1.00, 20.00, 3.62, 3.74, 4.31, 4.34 SURF_ID='CONCRETE'
PERMIT_HOLE=.TRUE. SAWTOOTH=.TRUE. THICKEN=.FALSE./ Troof2[23]
&OBST XB=1.00, 20.00, 0.83, 0.86, 4.91, 4.94 SURF_ID='CONCRETE'
PERMIT_HOLE=.TRUE. SAWTOOTH=.TRUE. THICKEN=.FALSE./ Troof1
&OBST XB=1.00, 20.00, 3.38, 3.50, 4.36, 4.38 SURF_ID='CONCRETE'
PERMIT_HOLE=.TRUE. SAWTOOTH=.TRUE. THICKEN=.FALSE./ Troof2[21]
&OBST XB=1.00, 20.00, 2.06, 2.18, 4.64, 4.66 SURF_ID='CONCRETE'
PERMIT_HOLE=.TRUE. SAWTOOTH=.TRUE. THICKEN=.FALSE./ Troof2[10]
&OBST XB=1.00, 20.00, 4.82, 4.94, 4.06, 4.08 SURF_ID='CONCRETE'
PERMIT_HOLE=.TRUE. SAWTOOTH=.TRUE. THICKEN=.FALSE./ Troof2[33]
&OBST XB=1.00, 20.00, 1.94, 2.06, 4.66, 4.69 SURF_ID='CONCRETE'
PERMIT_HOLE=.TRUE. SAWTOOTH=.TRUE. THICKEN=.FALSE./ Troof2[9]
&OBST XB=1.00, 20.00, 6.14, 6.26, 3.78, 3.81 SURF_ID='CONCRETE'
PERMIT_HOLE=.TRUE. SAWTOOTH=.TRUE. THICKEN=.FALSE./ Troof2[44]
&OBST XB=1.00, 20.00, 4.34, 4.46, 4.16, 4.19 SURF_ID='CONCRETE'
PERMIT_HOLE=.TRUE. SAWTOOTH=.TRUE. THICKEN=.FALSE./ Troof2[29]
&OBST XB=1.00, 20.00, 3.26, 3.38, 4.38, 4.41 SURF_ID='CONCRETE'
PERMIT_HOLE=.TRUE. SAWTOOTH=.TRUE. THICKEN=.FALSE./ Troof2[20]
&OBST XB=1.00, 20.00, 0.98, 1.10, 4.86, 4.88 SURF_ID='CONCRETE'
PERMIT_HOLE=.TRUE. SAWTOOTH=.TRUE. THICKEN=.FALSE./ Troof2[1]

&OBST XB=1.00, 20.00, 5.42, 5.54, 3.93, 3.96 SURF_ID='CONCRETE'
 PERMIT_HOLE=.TRUE. SAWTOOTH=.TRUE. THICKEN=.FALSE./ Troof2[38]
 &OBST XB=1.00, 20.00, 5.18, 5.30, 3.98, 4.01 SURF_ID='CONCRETE'
 PERMIT_HOLE=.TRUE. SAWTOOTH=.TRUE. THICKEN=.FALSE./ Troof2[36]
 &OBST XB=1.00, 20.00, 4.94, 5.06, 4.04, 4.06 SURF_ID='CONCRETE'
 PERMIT_HOLE=.TRUE. SAWTOOTH=.TRUE. THICKEN=.FALSE./ Troof2[34]
 &OBST XB=1.00, 20.00, 3.86, 3.98, 4.26, 4.28 SURF_ID='CONCRETE'
 PERMIT_HOLE=.TRUE. SAWTOOTH=.TRUE. THICKEN=.FALSE./ Troof2[25]
 &OBST XB=1.00, 20.00, 3.74, 3.86, 4.28, 4.31 SURF_ID='CONCRETE'
 PERMIT_HOLE=.TRUE. SAWTOOTH=.TRUE. THICKEN=.FALSE./ Troof2[24]
 &OBST XB=1.00, 20.00, 1.34, 1.46, 4.78, 4.81 SURF_ID='CONCRETE'
 PERMIT_HOLE=.TRUE. SAWTOOTH=.TRUE. THICKEN=.FALSE./ Troof2[4]
 &OBST XB=1.00, 20.00, 4.22, 4.34, 4.18, 4.21 SURF_ID='CONCRETE'
 PERMIT_HOLE=.TRUE. SAWTOOTH=.TRUE. THICKEN=.FALSE./ Troof2[28]
 &OBST XB=17.55, 19.00, 2.00, 2.10, 0.00, 3.20 SURF_ID='CONCRETE'
 PERMIT_HOLE=.FALSE. SAWTOOTH=.TRUE. THICKEN=.FALSE./ Frontwall
 &OBST XB=2.00, 6.25, 2.00, 2.10, 0.00, 3.20 SURF_ID='CONCRETE'
 PERMIT_HOLE=.FALSE. SAWTOOTH=.TRUE. THICKEN=.FALSE./ FrontwallLeft
 &OBST XB=6.25, 10.50, 2.00, 2.10, 2.55, 3.20 SURF_ID='CONCRETE'
 PERMIT_HOLE=.FALSE. SAWTOOTH=.TRUE. THICKEN=.FALSE./ frontUpperwallB
 &OBST XB=10.50, 16.20, 2.00, 2.10, 0.1000, 3.20 SURF_ID='CONCRETE'
 PERMIT_HOLE=.FALSE. SAWTOOTH=.TRUE. THICKEN=.FALSE./ FrontwallMid
 &OBST XB=16.20, 17.55, 2.00, 2.10, 2.55, 3.20 SURF_ID='CONCRETE'
 PERMIT_HOLE=.FALSE. SAWTOOTH=.TRUE. THICKEN=.FALSE./ FrontUppers
 &OBST XB=2.00, 2.10, 2.00, 2.55, 0.2100, 0.4200 SURF_ID='CONCRETE'
 PERMIT_HOLE=.FALSE. SAWTOOTH=.TRUE. THICKEN=.FALSE./ sidewallL[1]
 &OBST XB=2.00, 2.10, 2.00, 7.00, 0.00, 0.2100 SURF_ID='CONCRETE'
 PERMIT_HOLE=.FALSE. SAWTOOTH=.TRUE. THICKEN=.FALSE./ sidewallL
 &OBST XB=2.00, 2.10, 2.00, 7.00, 0.4200, 3.20 SURF_ID='CONCRETE'
 PERMIT_HOLE=.FALSE. SAWTOOTH=.TRUE. THICKEN=.FALSE./ sidewallL[1][1]

&OBST XB=2.00, 2.10, 6.35, 6.90, 0.2100, 0.4200 SURF_ID='CONCRETE'
PERMIT_HOLE=.FALSE. SAWTOOTH=.TRUE. THICKEN=.FALSE./ sidewallL[1][1]
&OBST XB=18.90, 19.00, 2.00, 7.00, 0.00, 0.2100 SURF_ID='CONCRETE'
PERMIT_HOLE=.FALSE. SAWTOOTH=.TRUE. THICKEN=.FALSE./ sidewallR
&OBST XB=18.90, 19.00, 2.00, 2.55, 0.2100, 0.4200 SURF_ID='CONCRETE'
PERMIT_HOLE=.FALSE. SAWTOOTH=.TRUE. THICKEN=.FALSE./ sidewallR[1]
&OBST XB=18.90, 19.00, 2.00, 7.00, 0.4200, 3.20 SURF_ID='CONCRETE'
PERMIT_HOLE=.FALSE. SAWTOOTH=.TRUE. THICKEN=.FALSE./ sidewallR[1][1]
&OBST XB=18.90, 19.00, 6.40, 6.95, 0.2100, 0.4200 SURF_ID='CONCRETE'
PERMIT_HOLE=.FALSE. SAWTOOTH=.TRUE. THICKEN=.FALSE./ sidewallR[1][1]
&OBST XB=17.85, 18.00, 6.90, 7.00, 0.2100, 0.4200 SURF_ID='CONCRETE'
PERMIT_HOLE=.FALSE. SAWTOOTH=.TRUE. THICKEN=.FALSE./ windblock[B]
&OBST XB=17.30, 17.45, 6.90, 7.00, 0.2100, 0.4200 SURF_ID='CONCRETE'
PERMIT_HOLE=.FALSE. SAWTOOTH=.TRUE. THICKEN=.FALSE./ windblock[B][1]
&OBST XB=16.75, 16.90, 6.90, 7.00, 0.2100, 0.4200 SURF_ID='CONCRETE'
PERMIT_HOLE=.FALSE. SAWTOOTH=.TRUE. THICKEN=.FALSE./ windblock[B][2]
&OBST XB=16.20, 16.35, 6.90, 7.00, 0.2100, 0.4200 SURF_ID='CONCRETE'
PERMIT_HOLE=.FALSE. SAWTOOTH=.TRUE. THICKEN=.FALSE./ windblock[B][3]
&OBST XB=15.65, 15.80, 6.90, 7.00, 0.2100, 0.4200 SURF_ID='CONCRETE'
PERMIT_HOLE=.FALSE. SAWTOOTH=.TRUE. THICKEN=.FALSE./ windblock[B][4]
&OBST XB=15.10, 15.25, 6.90, 7.00, 0.2100, 0.4200 SURF_ID='CONCRETE'
PERMIT_HOLE=.FALSE. SAWTOOTH=.TRUE. THICKEN=.FALSE./ windblock[B][5]
&OBST XB=14.55, 14.70, 6.90, 7.00, 0.2100, 0.4200 SURF_ID='CONCRETE'
PERMIT_HOLE=.FALSE. SAWTOOTH=.TRUE. THICKEN=.FALSE./ windblock[B][6]
&OBST XB=14.00, 14.15, 6.90, 7.00, 0.2100, 0.4200 SURF_ID='CONCRETE'
PERMIT_HOLE=.FALSE. SAWTOOTH=.TRUE. THICKEN=.FALSE./ windblock[B][7]
&OBST XB=13.45, 13.60, 6.90, 7.00, 0.2100, 0.4200 SURF_ID='CONCRETE'
PERMIT_HOLE=.FALSE. SAWTOOTH=.TRUE. THICKEN=.FALSE./ windblock[B][8]
&OBST XB=12.90, 13.05, 6.90, 7.00, 0.2100, 0.4200 SURF_ID='CONCRETE'
PERMIT_HOLE=.FALSE. SAWTOOTH=.TRUE. THICKEN=.FALSE./ windblock[B][9]

&OBST XB=12.35, 12.50, 6.90, 7.00, 0.2100, 0.4200 SURF_ID='CONCRETE'
PERMIT_HOLE=.FALSE. SAWTOOTH=.TRUE. THICKEN=.FALSE./ windblock[B][10]
&OBST XB=11.80, 11.95, 6.90, 7.00, 0.2100, 0.4200 SURF_ID='CONCRETE'
PERMIT_HOLE=.FALSE. SAWTOOTH=.TRUE. THICKEN=.FALSE./ windblock[B][11]
&OBST XB=11.25, 11.40, 6.90, 7.00, 0.2100, 0.4200 SURF_ID='CONCRETE'
PERMIT_HOLE=.FALSE. SAWTOOTH=.TRUE. THICKEN=.FALSE./ windblock[B][12]
&OBST XB=10.70, 10.85, 6.90, 7.00, 0.2100, 0.4200 SURF_ID='CONCRETE'
PERMIT_HOLE=.FALSE. SAWTOOTH=.TRUE. THICKEN=.FALSE./ windblock[B][13]
&OBST XB=10.15, 10.30, 6.90, 7.00, 0.2100, 0.4200 SURF_ID='CONCRETE'
PERMIT_HOLE=.FALSE. SAWTOOTH=.TRUE. THICKEN=.FALSE./ windblock[B][14]
&OBST XB=9.60, 9.75, 6.90, 7.00, 0.2100, 0.4200 SURF_ID='CONCRETE'
PERMIT_HOLE=.FALSE. SAWTOOTH=.TRUE. THICKEN=.FALSE./ windblock[B][15]
&OBST XB=9.05, 9.20, 6.90, 7.00, 0.2100, 0.4200 SURF_ID='CONCRETE'
PERMIT_HOLE=.FALSE. SAWTOOTH=.TRUE. THICKEN=.FALSE./ windblock[B][16]
&OBST XB=8.50, 8.65, 6.90, 7.00, 0.2100, 0.4200 SURF_ID='CONCRETE'
PERMIT_HOLE=.FALSE. SAWTOOTH=.TRUE. THICKEN=.FALSE./ windblock[B][17]
&OBST XB=7.95, 8.10, 6.90, 7.00, 0.2100, 0.4200 SURF_ID='CONCRETE'
PERMIT_HOLE=.FALSE. SAWTOOTH=.TRUE. THICKEN=.FALSE./ windblock[B][18]
&OBST XB=7.40, 7.55, 6.90, 7.00, 0.2100, 0.4200 SURF_ID='CONCRETE'
PERMIT_HOLE=.FALSE. SAWTOOTH=.TRUE. THICKEN=.FALSE./ windblock[B][19]
&OBST XB=6.85, 7.00, 6.90, 7.00, 0.2100, 0.4200 SURF_ID='CONCRETE'
PERMIT_HOLE=.FALSE. SAWTOOTH=.TRUE. THICKEN=.FALSE./ windblock[B][20]
&OBST XB=6.30, 6.45, 6.90, 7.00, 0.2100, 0.4200 SURF_ID='CONCRETE'
PERMIT_HOLE=.FALSE. SAWTOOTH=.TRUE. THICKEN=.FALSE./ windblock[B][21]
&OBST XB=5.75, 5.90, 6.90, 7.00, 0.2100, 0.4200 SURF_ID='CONCRETE'
PERMIT_HOLE=.FALSE. SAWTOOTH=.TRUE. THICKEN=.FALSE./ windblock[B][22]
&OBST XB=5.20, 5.35, 6.90, 7.00, 0.2100, 0.4200 SURF_ID='CONCRETE'
PERMIT_HOLE=.FALSE. SAWTOOTH=.TRUE. THICKEN=.FALSE./ windblock[B][23]
&OBST XB=4.65, 4.80, 6.90, 7.00, 0.2100, 0.4200 SURF_ID='CONCRETE'
PERMIT_HOLE=.FALSE. SAWTOOTH=.TRUE. THICKEN=.FALSE./ windblock[B][24]

&OBST XB=4.10, 4.25, 6.90, 7.00, 0.2100, 0.4200 SURF_ID='CONCRETE'
PERMIT_HOLE=.FALSE. SAWTOOTH=.TRUE. THICKEN=.FALSE./ windblock[B][25]
&OBST XB=3.55, 3.70, 6.90, 7.00, 0.2100, 0.4200 SURF_ID='CONCRETE'
PERMIT_HOLE=.FALSE. SAWTOOTH=.TRUE. THICKEN=.FALSE./ windblock[B][26]
&OBST XB=3.00, 3.15, 6.90, 7.00, 0.2100, 0.4200 SURF_ID='CONCRETE'
PERMIT_HOLE=.FALSE. SAWTOOTH=.TRUE. THICKEN=.FALSE./ windblock[B][27]
&OBST XB=2.00, 2.10, 2.95, 3.10, 0.2100, 0.4200 SURF_ID='CONCRETE'
PERMIT_HOLE=.FALSE. SAWTOOTH=.TRUE. THICKEN=.FALSE./ windblock
&OBST XB=2.00, 2.10, 3.50, 3.65, 0.2100, 0.4200 SURF_ID='CONCRETE'
PERMIT_HOLE=.FALSE. SAWTOOTH=.TRUE. THICKEN=.FALSE./ windblock[1]
&OBST XB=2.00, 2.10, 4.05, 4.20, 0.2100, 0.4200 SURF_ID='CONCRETE'
PERMIT_HOLE=.FALSE. SAWTOOTH=.TRUE. THICKEN=.FALSE./ windblock[2]
&OBST XB=2.00, 2.10, 4.60, 4.75, 0.2100, 0.4200 SURF_ID='CONCRETE'
PERMIT_HOLE=.FALSE. SAWTOOTH=.TRUE. THICKEN=.FALSE./ windblock[3]
&OBST XB=2.00, 2.10, 5.15, 5.30, 0.2100, 0.4200 SURF_ID='CONCRETE'
PERMIT_HOLE=.FALSE. SAWTOOTH=.TRUE. THICKEN=.FALSE./ windblock[4]
&OBST XB=2.00, 2.10, 5.70, 5.85, 0.2100, 0.4200 SURF_ID='CONCRETE'
PERMIT_HOLE=.FALSE. SAWTOOTH=.TRUE. THICKEN=.FALSE./ windblock[5]
&OBST XB=2.00, 2.10, 6.20, 6.40, 0.2100, 0.4200 SURF_ID='CONCRETE'
PERMIT_HOLE=.FALSE. SAWTOOTH=.TRUE. THICKEN=.FALSE./ windblock[6]
&OBST XB=18.90, 19.00, 2.95, 3.10, 0.2100, 0.4200 SURF_ID='CONCRETE'
PERMIT_HOLE=.FALSE. SAWTOOTH=.TRUE. THICKEN=.FALSE./ windblock
&OBST XB=18.90, 19.00, 3.50, 3.65, 0.2100, 0.4200 SURF_ID='CONCRETE'
PERMIT_HOLE=.FALSE. SAWTOOTH=.TRUE. THICKEN=.FALSE./ windblock[1]
&OBST XB=18.90, 19.00, 4.05, 4.20, 0.2100, 0.4200 SURF_ID='CONCRETE'
PERMIT_HOLE=.FALSE. SAWTOOTH=.TRUE. THICKEN=.FALSE./ windblock[2]
&OBST XB=18.90, 19.00, 4.60, 4.75, 0.2100, 0.4200 SURF_ID='CONCRETE'
PERMIT_HOLE=.FALSE. SAWTOOTH=.TRUE. THICKEN=.FALSE./ windblock[3]
&OBST XB=18.90, 19.00, 5.15, 5.30, 0.2100, 0.4200 SURF_ID='CONCRETE'
PERMIT_HOLE=.FALSE. SAWTOOTH=.TRUE. THICKEN=.FALSE./ windblock[4]

&OBST XB=18.90, 19.00, 5.70, 5.85, 0.2100, 0.4200 SURF_ID='CONCRETE'
 PERMIT_HOLE=.FALSE. SAWTOOTH=.TRUE. THICKEN=.FALSE./ windblock[5]
 &OBST XB=18.90, 19.00, 6.20, 6.40, 0.2100, 0.4200 SURF_ID='CONCRETE'
 PERMIT_HOLE=.FALSE. SAWTOOTH=.TRUE. THICKEN=.FALSE./ windblock[6]
 &OBST XB=2.00, 19.00, 6.90, 7.00, 0.00, 0.2100 SURF_ID='CONCRETE'
 PERMIT_HOLE=.FALSE. SAWTOOTH=.TRUE. THICKEN=.FALSE./ rearwall
 &OBST XB=2.00, 2.55, 6.90, 7.00, 0.2100, 0.4200 SURF_ID='CONCRETE'
 PERMIT_HOLE=.FALSE. SAWTOOTH=.TRUE. THICKEN=.FALSE./ rearwall[1]
 &OBST XB=2.00, 19.00, 6.90, 7.00, 0.4200, 3.20 SURF_ID='CONCRETE'
 PERMIT_HOLE=.FALSE. SAWTOOTH=.TRUE. THICKEN=.FALSE./ rearwall[1]
 &OBST XB=18.44, 18.99, 6.90, 7.00, 0.2100, 0.4200 SURF_ID='CONCRETE'
 PERMIT_HOLE=.FALSE. SAWTOOTH=.TRUE. THICKEN=.FALSE./ rearwall[1][1]
 &OBST XB=6.25, 10.50, 2.00, 2.10, 0.1000, 2.55 SURF_ID='SHEET METAL'
 PERMIT_HOLE=.FALSE. SAWTOOTH=.TRUE. THICKEN=.FALSE./ doorBig
 &OBST XB=16.20, 17.55, 2.00, 2.10, 0.1000, 2.55 SURF_ID='SHEET METAL'
 PERMIT_HOLE=.FALSE. SAWTOOTH=.TRUE. THICKEN=.FALSE./ smalldoor
 &OBST XB=18.95, 19.00, 2.55, 3.00, 0.3200, 0.4200 SURF_ID='CONCRETE'
 PERMIT_HOLE=.FALSE. SAWTOOTH=.TRUE. THICKEN=.FALSE./ windblockR1
 &OBST XB=18.95, 19.00, 3.10, 3.55, 0.3200, 0.4200 SURF_ID='CONCRETE'
 PERMIT_HOLE=.FALSE. SAWTOOTH=.TRUE. THICKEN=.FALSE./ windblockR1[1]
 &OBST XB=18.95, 19.00, 3.65, 4.10, 0.3200, 0.4200 SURF_ID='CONCRETE'
 PERMIT_HOLE=.FALSE. SAWTOOTH=.TRUE. THICKEN=.FALSE./ windblockR1[2]
 &OBST XB=18.95, 19.00, 4.20, 4.65, 0.3200, 0.4200 SURF_ID='CONCRETE'
 PERMIT_HOLE=.FALSE. SAWTOOTH=.TRUE. THICKEN=.FALSE./ windblockR1[3]
 &OBST XB=18.95, 19.00, 4.75, 5.20, 0.3200, 0.4200 SURF_ID='CONCRETE'
 PERMIT_HOLE=.FALSE. SAWTOOTH=.TRUE. THICKEN=.FALSE./ windblockR1[4]
 &OBST XB=18.95, 19.00, 5.30, 5.75, 0.3200, 0.4200 SURF_ID='CONCRETE'
 PERMIT_HOLE=.FALSE. SAWTOOTH=.TRUE. THICKEN=.FALSE./ windblockR1[5]
 &OBST XB=18.95, 19.00, 5.85, 6.30, 0.3200, 0.4200 SURF_ID='CONCRETE'
 PERMIT_HOLE=.FALSE. SAWTOOTH=.TRUE. THICKEN=.FALSE./ windblockR1[6]

&OBST XB=2.00, 2.05, 2.55, 3.00, 0.3200, 0.4200 SURF_ID='CONCRETE'
 PERMIT_HOLE=.FALSE. SAWTOOTH=.TRUE. THICKEN=.FALSE./ windblockR1
 &OBST XB=2.00, 2.05, 3.10, 3.55, 0.3200, 0.4200 SURF_ID='CONCRETE'
 PERMIT_HOLE=.FALSE. SAWTOOTH=.TRUE. THICKEN=.FALSE./ windblockR1[1]
 &OBST XB=2.00, 2.05, 3.65, 4.10, 0.3200, 0.4200 SURF_ID='CONCRETE'
 PERMIT_HOLE=.FALSE. SAWTOOTH=.TRUE. THICKEN=.FALSE./ windblockR1[2]
 &OBST XB=2.00, 2.05, 4.20, 4.65, 0.3200, 0.4200 SURF_ID='CONCRETE'
 PERMIT_HOLE=.FALSE. SAWTOOTH=.TRUE. THICKEN=.FALSE./ windblockR1[3]
 &OBST XB=2.00, 2.05, 4.75, 5.20, 0.3200, 0.4200 SURF_ID='CONCRETE'
 PERMIT_HOLE=.FALSE. SAWTOOTH=.TRUE. THICKEN=.FALSE./ windblockR1[4]
 &OBST XB=2.00, 2.05, 5.30, 5.75, 0.3200, 0.4200 SURF_ID='CONCRETE'
 PERMIT_HOLE=.FALSE. SAWTOOTH=.TRUE. THICKEN=.FALSE./ windblockR1[5]
 &OBST XB=2.00, 2.05, 5.85, 6.30, 0.3200, 0.4200 SURF_ID='CONCRETE'
 PERMIT_HOLE=.FALSE. SAWTOOTH=.TRUE. THICKEN=.FALSE./ windblockR1[6]
 &OBST XB=18.00, 18.44, 6.95, 7.00, 0.3200, 0.4200 SURF_ID='CONCRETE'
 PERMIT_HOLE=.FALSE. SAWTOOTH=.TRUE. THICKEN=.FALSE./ ConcreatBRear
 &OBST XB=17.45, 17.89, 6.95, 7.00, 0.3200, 0.4200 SURF_ID='CONCRETE'
 PERMIT_HOLE=.FALSE. SAWTOOTH=.TRUE. THICKEN=.FALSE./ ConcreatBRear[1]
 &OBST XB=16.90, 17.34, 6.95, 7.00, 0.3200, 0.4200 SURF_ID='CONCRETE'
 PERMIT_HOLE=.FALSE. SAWTOOTH=.TRUE. THICKEN=.FALSE./ ConcreatBRear[2]
 &OBST XB=16.35, 16.79, 6.95, 7.00, 0.3200, 0.4200 SURF_ID='CONCRETE'
 PERMIT_HOLE=.FALSE. SAWTOOTH=.TRUE. THICKEN=.FALSE./ ConcreatBRear[3]
 &OBST XB=15.80, 16.24, 6.95, 7.00, 0.3200, 0.4200 SURF_ID='CONCRETE'
 PERMIT_HOLE=.FALSE. SAWTOOTH=.TRUE. THICKEN=.FALSE./ ConcreatBRear[4]
 &OBST XB=15.25, 15.69, 6.95, 7.00, 0.3200, 0.4200 SURF_ID='CONCRETE'
 PERMIT_HOLE=.FALSE. SAWTOOTH=.TRUE. THICKEN=.FALSE./ ConcreatBRear[5]
 &OBST XB=14.70, 15.14, 6.95, 7.00, 0.3200, 0.4200 SURF_ID='CONCRETE'
 PERMIT_HOLE=.FALSE. SAWTOOTH=.TRUE. THICKEN=.FALSE./ ConcreatBRear[6]
 &OBST XB=14.15, 14.59, 6.95, 7.00, 0.3200, 0.4200 SURF_ID='CONCRETE'
 PERMIT_HOLE=.FALSE. SAWTOOTH=.TRUE. THICKEN=.FALSE./ ConcreatBRear[7]

&OBST XB=13.60, 14.04, 6.95, 7.00, 0.3200, 0.4200 SURF_ID='CONCRETE'
PERMIT_HOLE=.FALSE. SAWTOOTH=.TRUE. THICKEN=.FALSE./ ConcreatBRear[8]
&OBST XB=13.05, 13.49, 6.95, 7.00, 0.3200, 0.4200 SURF_ID='CONCRETE'
PERMIT_HOLE=.FALSE. SAWTOOTH=.TRUE. THICKEN=.FALSE./ ConcreatBRear[9]
&OBST XB=12.50, 12.94, 6.95, 7.00, 0.3200, 0.4200 SURF_ID='CONCRETE'
PERMIT_HOLE=.FALSE. SAWTOOTH=.TRUE. THICKEN=.FALSE./ ConcreatBRear[10]
&OBST XB=11.95, 12.39, 6.95, 7.00, 0.3200, 0.4200 SURF_ID='CONCRETE'
PERMIT_HOLE=.FALSE. SAWTOOTH=.TRUE. THICKEN=.FALSE./ ConcreatBRear[11]
&OBST XB=11.40, 11.84, 6.95, 7.00, 0.3200, 0.4200 SURF_ID='CONCRETE'
PERMIT_HOLE=.FALSE. SAWTOOTH=.TRUE. THICKEN=.FALSE./ ConcreatBRear[12]
&OBST XB=10.85, 11.29, 6.95, 7.00, 0.3200, 0.4200 SURF_ID='CONCRETE'
PERMIT_HOLE=.FALSE. SAWTOOTH=.TRUE. THICKEN=.FALSE./ ConcreatBRear[13]
&OBST XB=10.30, 10.74, 6.95, 7.00, 0.3200, 0.4200 SURF_ID='CONCRETE'
PERMIT_HOLE=.FALSE. SAWTOOTH=.TRUE. THICKEN=.FALSE./ ConcreatBRear[14]
&OBST XB=9.75, 10.19, 6.95, 7.00, 0.3200, 0.4200 SURF_ID='CONCRETE'
PERMIT_HOLE=.FALSE. SAWTOOTH=.TRUE. THICKEN=.FALSE./ ConcreatBRear[15]
&OBST XB=9.20, 9.64, 6.95, 7.00, 0.3200, 0.4200 SURF_ID='CONCRETE'
PERMIT_HOLE=.FALSE. SAWTOOTH=.TRUE. THICKEN=.FALSE./ ConcreatBRear[16]
&OBST XB=8.65, 9.09, 6.95, 7.00, 0.3200, 0.4200 SURF_ID='CONCRETE'
PERMIT_HOLE=.FALSE. SAWTOOTH=.TRUE. THICKEN=.FALSE./ ConcreatBRear[17]
&OBST XB=8.10, 8.54, 6.95, 7.00, 0.3200, 0.4200 SURF_ID='CONCRETE'
PERMIT_HOLE=.FALSE. SAWTOOTH=.TRUE. THICKEN=.FALSE./ ConcreatBRear[18]
&OBST XB=7.55, 7.99, 6.95, 7.00, 0.3200, 0.4200 SURF_ID='CONCRETE'
PERMIT_HOLE=.FALSE. SAWTOOTH=.TRUE. THICKEN=.FALSE./ ConcreatBRear[19]
&OBST XB=7.00, 7.44, 6.95, 7.00, 0.3200, 0.4200 SURF_ID='CONCRETE'
PERMIT_HOLE=.FALSE. SAWTOOTH=.TRUE. THICKEN=.FALSE./ ConcreatBRear[20]
&OBST XB=6.45, 6.89, 6.95, 7.00, 0.3200, 0.4200 SURF_ID='CONCRETE'
PERMIT_HOLE=.FALSE. SAWTOOTH=.TRUE. THICKEN=.FALSE./ ConcreatBRear[21]
&OBST XB=5.90, 6.34, 6.95, 7.00, 0.3200, 0.4200 SURF_ID='CONCRETE'
PERMIT_HOLE=.FALSE. SAWTOOTH=.TRUE. THICKEN=.FALSE./ ConcreatBRear[22]

```

&OBST XB=5.35, 5.79, 6.95, 7.00, 0.3200, 0.4200 SURF_ID='CONCRETE'
PERMIT_HOLE=.FALSE. SAWTOOTH=.TRUE. THICKEN=.FALSE./ ConcreatBRear[23]
&OBST XB=4.80, 5.24, 6.95, 7.00, 0.3200, 0.4200 SURF_ID='CONCRETE'
PERMIT_HOLE=.FALSE. SAWTOOTH=.TRUE. THICKEN=.FALSE./ ConcreatBRear[24]
&OBST XB=4.25, 4.69, 6.95, 7.00, 0.3200, 0.4200 SURF_ID='CONCRETE'
PERMIT_HOLE=.FALSE. SAWTOOTH=.TRUE. THICKEN=.FALSE./ ConcreatBRear[25]
&OBST XB=3.70, 4.14, 6.95, 7.00, 0.3200, 0.4200 SURF_ID='CONCRETE'
PERMIT_HOLE=.FALSE. SAWTOOTH=.TRUE. THICKEN=.FALSE./ ConcreatBRear[26]
&OBST XB=3.15, 3.59, 6.95, 7.00, 0.3200, 0.4200 SURF_ID='CONCRETE'
PERMIT_HOLE=.FALSE. SAWTOOTH=.TRUE. THICKEN=.FALSE./ ConcreatBRear[27]
&OBST XB=2.55, 3.04, 6.95, 7.00, 0.3200, 0.4200 SURF_ID='CONCRETE'
PERMIT_HOLE=.FALSE. SAWTOOTH=.TRUE. THICKEN=.FALSE./ ConcreatBRear[28]
*****REACTION METHANOL*****
&REAC ID='METHANOL' SOOT_YIELD=0.00 NU_H2O=2.00 NU_CO2=1.00
EPUMO2=1.329000E004 RADIATIVE_FRACTION=0.00 MW_FUEL=32.00 NU_O2=1.50/
*****SLIDE FILE*****
&SLCF PBX=14.50 QUANTITY='TEMPERATURE' VECTOR=.TRUE./
&SLCF PBX=17.50 QUANTITY='TEMPERATURE' VECTOR=.TRUE./
&SLCF PBY=5.70 QUANTITY='TEMPERATURE' VECTOR=.TRUE./
&SLCF PBZ=0.50 QUANTITY='TEMPERATURE' VECTOR=.TRUE./
&SLCF PBY=5.70 QUANTITY='DROPLET_FLUX_Y' VECTOR=.TRUE./
*****DISPLAY*****
&PL3D QUANTITIES='V-VELOCITY', 'U-VELOCITY', 'W-VELOCITY', 'HRRPUV',
'TEMPERATURE' WRITE_XYZ=.FALSE./
*****SURFACE*****
&SURF ID='SHEET METAL' RGB=0.2000, 0.2000, 0.2000 C_DELTA_RHO=4.70
DELTA=1.300000E-003/
&SURF ID='CONCRETE' RGB=0.66, 0.66, 0.66 TEXTURE_MAP='concrete.jpg'
TEXTURE_WIDTH=0.50 TEXTURE_HEIGHT=0.50 KS=1.00 DELTA=0.1000
DENSITY=2.100000E003 C_P=0.88/

```

&SURF ID='METHANOL' RGB=0.4000, 0.4000, 0.4000 PHASE='LIQUID' DENSITY=790.00
DELTA=0.1000 KS=0.2000 HEAT_OF_COMBUSTION=1.980000E004
HEAT_OF_VAPORIZATION=1.101000E003 C_P=2.50 TMPIGN=65.00
BURNING_RATE_MAX=0.0200/
*****THERMOCOUPLE*****
&THCP XYZ=17.50, 5.70, 2.90 QUANTITY='TEMPERATURE' LABEL='t5-2.9'/
&THCP XYZ=17.50, 5.70, 1.50 QUANTITY='TEMPERATURE' LABEL='t5-1.5'/
&THCP XYZ=17.50, 5.70, 0.3000 QUANTITY='TEMPERATURE' LABEL='t5-0.3'/
&THCP XYZ=14.70, 5.70, 2.90 QUANTITY='TEMPERATURE' LABEL='t6-2.9'/
&THCP XYZ=14.70, 5.70, 1.50 QUANTITY='TEMPERATURE' LABEL='t6-1.5'/
&THCP XYZ=14.70, 5.70, 0.3000 QUANTITY='TEMPERATURE' LABEL='t6-0.3'/
*****VENT POSITION*****
&VENT XB=13.50, 18.50, 5.00, 6.50, 0.1000, 0.1000 SURF_ID='METHANOL' RGB=0.00,
0.80, 0.80/ Vent
&VENT XB=1.00, 1.00, 0.00, 7.25, 0.00, 5.00 SURF_ID='OPEN'/ x0
&VENT XB=20.00, 20.00, 0.00, 7.25, 0.00, 5.00 SURF_ID='OPEN'/ x20
&VENT XB=1.00, 20.00, 0.00, 0.00, 0.00, 5.00 SURF_ID='OPEN'/ y0
&VENT XB=1.00, 20.00, 7.25, 7.25, 0.00, 5.00 SURF_ID='OPEN'/ y725
&VENT XB=1.00, 20.00, 0.00, 7.25, 5.00, 5.00 SURF_ID='OPEN'/ z5

ภาคผนวก ค

Input file ของ แบบจำลองในแบบที่มีการควบคุมการเกิดเพลิงไหม้

Input file ของ แบบจำลองในแบบที่มีการควบคุมการเกิดเพลิงไหม้

```

&HEAD CHID='mistsprk' TITLE='k5 Baseon tm86/'
&GRID IBAR=40 JBAR=40 KBAR=54/ testMT
&PDIM XBAR0=1.00 YBAR0=0.00 ZBAR0=0.00 XBAR=20.00 YBAR=7.25 ZBAR=5.00/
testMT
&MISC REACTION='METHANOL' DTCORE=2.00/
&TIME TWFIN=600.00/
&ISOF QUANTITY='TEMPERATURE' VALUE(1)=25.00 VALUE(2)=1.000000E003/
*****OBSTRUCTION PART*****
&OBST XB=2.00, 19.00, 2.00, 7.00, 0.00, 0.1000 SURF_ID='CONCRETE'
PERMIT_HOLE=.TRUE. SAWTOOTH=.TRUE. THICKEN=.FALSE./ floor
&OBST XB=13.50, 18.50, 5.00, 5.05, 0.1500, 0.1000 SURF_ID='SHEET METAL'
PERMIT_HOLE=.TRUE. SAWTOOTH=.TRUE. THICKEN=.FALSE./ bundwallFRONT
&OBST XB=13.50, 18.50, 6.45, 6.50, 0.1500, 0.1000 SURF_ID='SHEET METAL'
PERMIT_HOLE=.TRUE. SAWTOOTH=.TRUE. THICKEN=.FALSE./ bundwallrear
&OBST XB=13.50, 13.55, 5.00, 6.45, 0.1000, 0.1500 SURF_ID='SHEET METAL'
PERMIT_HOLE=.TRUE. SAWTOOTH=.TRUE. THICKEN=.FALSE./ bundsideL
&OBST XB=18.45, 18.50, 5.00, 6.45, 0.1000, 0.1500 SURF_ID='SHEET METAL'
PERMIT_HOLE=.TRUE. SAWTOOTH=.TRUE. THICKEN=.FALSE./ bundsideR
&OBST XB=1.00, 20.00, 7.20, 7.22, 2.48, 3.58 SURF_ID='CONCRETE'
PERMIT_HOLE=.TRUE. SAWTOOTH=.TRUE. THICKEN=.FALSE./ rearroof
&OBST XB=1.00, 20.00, 0.83, 0.86, 3.10, 4.91 SURF_ID='CONCRETE'
PERMIT_HOLE=.TRUE. SAWTOOTH=.TRUE. THICKEN=.FALSE./ frontroof
&OBST XB=1.00, 1.03, 7.10, 7.22, 2.48, 3.58 SURF_ID='CONCRETE'
PERMIT_HOLE=.TRUE. SAWTOOTH=.TRUE. THICKEN=.FALSE./ sideroof
&OBST XB=1.00, 1.03, 6.98, 7.10, 2.51, 3.61 SURF_ID='CONCRETE'
PERMIT_HOLE=.TRUE. SAWTOOTH=.TRUE. THICKEN=.FALSE./ sideroof[1]
&OBST XB=1.00, 1.03, 6.86, 6.98, 2.54, 3.64 SURF_ID='CONCRETE'
PERMIT_HOLE=.TRUE. SAWTOOTH=.TRUE. THICKEN=.FALSE./ sideroof2

```

&OBST XB=1.00, 1.03, 6.74, 6.86, 2.56, 3.66 SURF_ID='CONCRETE'
PERMIT_HOLE=.TRUE. SAWTOOTH=.TRUE. THICKEN=.FALSE./ sideroof[3]
&OBST XB=1.00, 1.03, 6.62, 6.74, 2.58, 3.68 SURF_ID='CONCRETE'
PERMIT_HOLE=.TRUE. SAWTOOTH=.TRUE. THICKEN=.FALSE./ sideroof[4]
&OBST XB=1.00, 1.03, 6.50, 6.62, 2.60, 3.70 SURF_ID='CONCRETE'
PERMIT_HOLE=.TRUE. SAWTOOTH=.TRUE. THICKEN=.FALSE./ sideroof[4][1]
&OBST XB=1.00, 1.03, 6.38, 6.50, 2.63, 3.73 SURF_ID='CONCRETE'
PERMIT_HOLE=.TRUE. SAWTOOTH=.TRUE. THICKEN=.FALSE./ sideroof[4][2]
&OBST XB=1.00, 1.03, 6.26, 6.38, 2.66, 3.76 SURF_ID='CONCRETE'
PERMIT_HOLE=.TRUE. SAWTOOTH=.TRUE. THICKEN=.FALSE./ sideroof[4][3]
&OBST XB=1.00, 1.03, 6.14, 6.26, 2.68, 3.78 SURF_ID='CONCRETE'
PERMIT_HOLE=.TRUE. SAWTOOTH=.TRUE. THICKEN=.FALSE./ sideroof[4][4]
&OBST XB=1.00, 1.03, 6.02, 6.14, 2.70, 3.80 SURF_ID='CONCRETE'
PERMIT_HOLE=.TRUE. SAWTOOTH=.TRUE. THICKEN=.FALSE./ sideroof[4][5]
&OBST XB=1.00, 1.03, 5.90, 6.02, 2.73, 3.83 SURF_ID='CONCRETE'
PERMIT_HOLE=.TRUE. SAWTOOTH=.TRUE. THICKEN=.FALSE./ sideroof[4][6]
&OBST XB=1.00, 1.03, 5.78, 5.90, 2.75, 3.85 SURF_ID='CONCRETE'
PERMIT_HOLE=.TRUE. SAWTOOTH=.TRUE. THICKEN=.FALSE./ sideroof[4][7]
&OBST XB=1.00, 1.03, 5.66, 5.78, 2.78, 3.88 SURF_ID='CONCRETE'
PERMIT_HOLE=.TRUE. SAWTOOTH=.TRUE. THICKEN=.FALSE./ sideroof[4][8]
&OBST XB=1.00, 1.03, 5.54, 5.66, 2.80, 3.90 SURF_ID='CONCRETE'
PERMIT_HOLE=.TRUE. SAWTOOTH=.TRUE. THICKEN=.FALSE./ sideroof[4][9]
&OBST XB=1.00, 1.03, 5.42, 5.54, 2.83, 3.93 SURF_ID='CONCRETE'
PERMIT_HOLE=.TRUE. SAWTOOTH=.TRUE. THICKEN=.FALSE./ sideroof[4][10]
&OBST XB=1.00, 1.03, 5.30, 5.42, 2.85, 3.95 SURF_ID='CONCRETE'
PERMIT_HOLE=.TRUE. SAWTOOTH=.TRUE. THICKEN=.FALSE./ sideroof[4][11]
&OBST XB=1.00, 1.03, 5.18, 5.30, 2.88, 3.98 SURF_ID='CONCRETE'
PERMIT_HOLE=.TRUE. SAWTOOTH=.TRUE. THICKEN=.FALSE./ sideroof[4][12]
&OBST XB=1.00, 1.03, 5.06, 5.18, 2.90, 4.00 SURF_ID='CONCRETE'
PERMIT_HOLE=.TRUE. SAWTOOTH=.TRUE. THICKEN=.FALSE./ sideroof[4][13]

&OBST XB=1.00, 1.03, 4.94, 5.06, 2.93, 4.03 SURF_ID='CONCRETE'
PERMIT_HOLE=.TRUE. SAWTOOTH=.TRUE. THICKEN=.FALSE./ sideroof[4][14]
&OBST XB=1.00, 1.03, 4.82, 4.94, 2.95, 4.06 SURF_ID='CONCRETE'
PERMIT_HOLE=.TRUE. SAWTOOTH=.TRUE. THICKEN=.FALSE./ sideroof[4][15]
&OBST XB=1.00, 1.03, 4.70, 4.82, 2.98, 4.08 SURF_ID='CONCRETE'
PERMIT_HOLE=.TRUE. SAWTOOTH=.TRUE. THICKEN=.FALSE./ sideroof[4][16]
&OBST XB=1.00, 1.03, 4.58, 4.70, 3.00, 4.10 SURF_ID='CONCRETE'
PERMIT_HOLE=.TRUE. SAWTOOTH=.TRUE. THICKEN=.FALSE./ sideroof[4][17]
&OBST XB=1.00, 1.03, 4.46, 4.58, 3.03, 4.13 SURF_ID='CONCRETE'
PERMIT_HOLE=.TRUE. SAWTOOTH=.TRUE. THICKEN=.FALSE./ sideroof[4][18]
&OBST XB=1.00, 1.03, 4.34, 4.46, 3.05, 4.15 SURF_ID='CONCRETE'
PERMIT_HOLE=.TRUE. SAWTOOTH=.TRUE. THICKEN=.FALSE./ sideroof[4][19]
&OBST XB=1.00, 1.03, 4.22, 4.34, 3.08, 4.18 SURF_ID='CONCRETE'
PERMIT_HOLE=.TRUE. SAWTOOTH=.TRUE. THICKEN=.FALSE./ sideroof[4][20]
&OBST XB=1.00, 1.03, 4.10, 4.22, 3.10, 4.20 SURF_ID='CONCRETE'
PERMIT_HOLE=.TRUE. SAWTOOTH=.TRUE. THICKEN=.FALSE./ sideroof[4][21]
&OBST XB=1.00, 1.03, 3.98, 4.10, 3.13, 4.23 SURF_ID='CONCRETE'
PERMIT_HOLE=.TRUE. SAWTOOTH=.TRUE. THICKEN=.FALSE./ sideroof[4][22]
&OBST XB=1.00, 1.03, 3.86, 3.98, 3.16, 4.26 SURF_ID='CONCRETE'
PERMIT_HOLE=.TRUE. SAWTOOTH=.TRUE. THICKEN=.FALSE./ sideroof[4][23]
&OBST XB=1.00, 1.03, 3.74, 3.86, 3.18, 4.28 SURF_ID='CONCRETE'
PERMIT_HOLE=.TRUE. SAWTOOTH=.TRUE. THICKEN=.FALSE./ sideroof[4][24]
&OBST XB=1.00, 1.03, 3.62, 3.74, 3.20, 4.30 SURF_ID='CONCRETE'
PERMIT_HOLE=.TRUE. SAWTOOTH=.TRUE. THICKEN=.FALSE./ sideroof[4][25]
&OBST XB=1.00, 1.03, 3.50, 3.62, 3.23, 4.33 SURF_ID='CONCRETE'
PERMIT_HOLE=.TRUE. SAWTOOTH=.TRUE. THICKEN=.FALSE./ sideroof[4][26]
&OBST XB=1.00, 1.03, 3.38, 3.50, 3.26, 4.35 SURF_ID='CONCRETE'
PERMIT_HOLE=.TRUE. SAWTOOTH=.TRUE. THICKEN=.FALSE./ sideroof[4][27]
&OBST XB=1.00, 1.03, 3.26, 3.38, 3.28, 4.38 SURF_ID='CONCRETE'
PERMIT_HOLE=.TRUE. SAWTOOTH=.TRUE. THICKEN=.FALSE./ sideroof[4][28]

&OBST XB=1.00, 1.03, 3.14, 3.26, 3.30, 4.40 SURF_ID='CONCRETE'
PERMIT_HOLE=.TRUE. SAWTOOTH=.TRUE. THICKEN=.FALSE./ sideroof[4][29]
&OBST XB=1.00, 1.03, 3.02, 3.14, 3.33, 4.43 SURF_ID='CONCRETE'
PERMIT_HOLE=.TRUE. SAWTOOTH=.TRUE. THICKEN=.FALSE./ sideroof[4][30]
&OBST XB=1.00, 1.03, 2.90, 3.02, 3.35, 4.46 SURF_ID='CONCRETE'
PERMIT_HOLE=.TRUE. SAWTOOTH=.TRUE. THICKEN=.FALSE./ sideroof[4][31]
&OBST XB=1.00, 1.03, 2.78, 2.90, 3.38, 4.48 SURF_ID='CONCRETE'
PERMIT_HOLE=.TRUE. SAWTOOTH=.TRUE. THICKEN=.FALSE./ sideroof[4][32]
&OBST XB=1.00, 1.03, 2.66, 2.78, 3.40, 4.50 SURF_ID='CONCRETE'
PERMIT_HOLE=.TRUE. SAWTOOTH=.TRUE. THICKEN=.FALSE./ sideroof[4][33]
&OBST XB=1.00, 1.03, 2.54, 2.66, 3.43, 4.53 SURF_ID='CONCRETE'
PERMIT_HOLE=.TRUE. SAWTOOTH=.TRUE. THICKEN=.FALSE./ sideroof[4][34]
&OBST XB=1.00, 1.03, 2.42, 2.54, 3.45, 4.56 SURF_ID='CONCRETE'
PERMIT_HOLE=.TRUE. SAWTOOTH=.TRUE. THICKEN=.FALSE./ sideroof[4][35]
&OBST XB=1.00, 1.03, 2.30, 2.42, 3.48, 4.58 SURF_ID='CONCRETE'
PERMIT_HOLE=.TRUE. SAWTOOTH=.TRUE. THICKEN=.FALSE./ sideroof[4][36]
&OBST XB=1.00, 1.03, 2.18, 2.30, 3.50, 4.60 SURF_ID='CONCRETE'
PERMIT_HOLE=.TRUE. SAWTOOTH=.TRUE. THICKEN=.FALSE./ sideroof[4][37]
&OBST XB=1.00, 1.03, 2.06, 2.18, 3.53, 4.63 SURF_ID='CONCRETE'
PERMIT_HOLE=.TRUE. SAWTOOTH=.TRUE. THICKEN=.FALSE./ sideroof[4][38]
&OBST XB=1.00, 1.03, 1.94, 2.06, 3.55, 4.65 SURF_ID='CONCRETE'
PERMIT_HOLE=.TRUE. SAWTOOTH=.TRUE. THICKEN=.FALSE./ sideroof[4][39]
&OBST XB=1.00, 1.03, 1.82, 1.94, 3.58, 4.68 SURF_ID='CONCRETE'
PERMIT_HOLE=.TRUE. SAWTOOTH=.TRUE. THICKEN=.FALSE./ sideroof[4][40]
&OBST XB=1.00, 1.03, 1.70, 1.82, 3.60, 4.70 SURF_ID='CONCRETE'
PERMIT_HOLE=.TRUE. SAWTOOTH=.TRUE. THICKEN=.FALSE./ sideroof[4][41]
&OBST XB=1.00, 1.03, 1.58, 1.70, 3.63, 4.73 SURF_ID='CONCRETE'
PERMIT_HOLE=.TRUE. SAWTOOTH=.TRUE. THICKEN=.FALSE./ sideroof[4][42]
&OBST XB=1.00, 1.03, 1.46, 1.58, 3.65, 4.76 SURF_ID='CONCRETE'
PERMIT_HOLE=.TRUE. SAWTOOTH=.TRUE. THICKEN=.FALSE./ sideroof[4][43]

&OBST XB=1.00, 1.03, 1.34, 1.46, 3.68, 4.78 SURF_ID='CONCRETE'
 PERMIT_HOLE=.TRUE. SAWTOOTH=.TRUE. THICKEN=.FALSE./ sideroof[4][44]
 &OBST XB=1.00, 1.03, 1.22, 1.34, 3.70, 4.80 SURF_ID='CONCRETE'
 PERMIT_HOLE=.TRUE. SAWTOOTH=.TRUE. THICKEN=.FALSE./ sideroof[4][45]
 &OBST XB=1.00, 1.03, 1.10, 1.22, 3.73, 4.83 SURF_ID='CONCRETE'
 PERMIT_HOLE=.TRUE. SAWTOOTH=.TRUE. THICKEN=.FALSE./ sideroof[4][46]
 &OBST XB=1.00, 1.03, 0.98, 1.10, 3.76, 4.85 SURF_ID='CONCRETE'
 PERMIT_HOLE=.TRUE. SAWTOOTH=.TRUE. THICKEN=.FALSE./ sideroof[4][47]
 &OBST XB=1.00, 1.03, 0.86, 0.98, 3.78, 4.88 SURF_ID='CONCRETE'
 PERMIT_HOLE=.TRUE. SAWTOOTH=.TRUE. THICKEN=.FALSE./ sideroof[4][48]
 &OBST XB=19.97, 20.00, 7.10, 7.22, 2.48, 3.58 SURF_ID='CONCRETE'
 PERMIT_HOLE=.TRUE. SAWTOOTH=.TRUE. THICKEN=.FALSE./ sideroof
 &OBST XB=19.97, 20.00, 6.98, 7.10, 2.51, 3.61 SURF_ID='CONCRETE'
 PERMIT_HOLE=.TRUE. SAWTOOTH=.TRUE. THICKEN=.FALSE./ sideroof[1]
 &OBST XB=19.97, 20.00, 6.86, 6.98, 2.54, 3.64 SURF_ID='CONCRETE'
 PERMIT_HOLE=.TRUE. SAWTOOTH=.TRUE. THICKEN=.FALSE./ sideroof2
 &OBST XB=19.97, 20.00, 6.74, 6.86, 2.56, 3.66 SURF_ID='CONCRETE'
 PERMIT_HOLE=.TRUE. SAWTOOTH=.TRUE. THICKEN=.FALSE./ sideroof[3]
 &OBST XB=19.97, 20.00, 6.62, 6.74, 2.58, 3.68 SURF_ID='CONCRETE'
 PERMIT_HOLE=.TRUE. SAWTOOTH=.TRUE. THICKEN=.FALSE./ sideroof[4]
 &OBST XB=19.97, 20.00, 6.50, 6.62, 2.60, 3.70 SURF_ID='CONCRETE'
 PERMIT_HOLE=.TRUE. SAWTOOTH=.TRUE. THICKEN=.FALSE./ sideroof[4][1]
 &OBST XB=19.97, 20.00, 6.38, 6.50, 2.63, 3.73 SURF_ID='CONCRETE'
 PERMIT_HOLE=.TRUE. SAWTOOTH=.TRUE. THICKEN=.FALSE./ sideroof[4][2]
 &OBST XB=19.97, 20.00, 6.26, 6.38, 2.66, 3.76 SURF_ID='CONCRETE'
 PERMIT_HOLE=.TRUE. SAWTOOTH=.TRUE. THICKEN=.FALSE./ sideroof[4][3]
 &OBST XB=19.97, 20.00, 6.14, 6.26, 2.68, 3.78 SURF_ID='CONCRETE'
 PERMIT_HOLE=.TRUE. SAWTOOTH=.TRUE. THICKEN=.FALSE./ sideroof[4][4]
 &OBST XB=19.97, 20.00, 6.02, 6.14, 2.70, 3.80 SURF_ID='CONCRETE'
 PERMIT_HOLE=.TRUE. SAWTOOTH=.TRUE. THICKEN=.FALSE./ sideroof[4][5]

&OBST XB=19.97, 20.00, 5.90, 6.02, 2.73, 3.83 SURF_ID='CONCRETE'
PERMIT_HOLE=.TRUE. SAWTOOTH=.TRUE. THICKEN=.FALSE./ sideroof[4][6]
&OBST XB=19.97, 20.00, 5.78, 5.90, 2.75, 3.85 SURF_ID='CONCRETE'
PERMIT_HOLE=.TRUE. SAWTOOTH=.TRUE. THICKEN=.FALSE./ sideroof[4][7]
&OBST XB=19.97, 20.00, 5.66, 5.78, 2.78, 3.88 SURF_ID='CONCRETE'
PERMIT_HOLE=.TRUE. SAWTOOTH=.TRUE. THICKEN=.FALSE./ sideroof[4][8]
&OBST XB=19.97, 20.00, 5.54, 5.66, 2.80, 3.90 SURF_ID='CONCRETE'
PERMIT_HOLE=.TRUE. SAWTOOTH=.TRUE. THICKEN=.FALSE./ sideroof[4][9]
&OBST XB=19.97, 20.00, 5.42, 5.54, 2.83, 3.93 SURF_ID='CONCRETE'
PERMIT_HOLE=.TRUE. SAWTOOTH=.TRUE. THICKEN=.FALSE./ sideroof[4][10]
&OBST XB=19.97, 20.00, 5.30, 5.42, 2.85, 3.95 SURF_ID='CONCRETE'
PERMIT_HOLE=.TRUE. SAWTOOTH=.TRUE. THICKEN=.FALSE./ sideroof[4][11]
&OBST XB=19.97, 20.00, 5.18, 5.30, 2.88, 3.98 SURF_ID='CONCRETE'
PERMIT_HOLE=.TRUE. SAWTOOTH=.TRUE. THICKEN=.FALSE./ sideroof[4][12]
&OBST XB=19.97, 20.00, 5.06, 5.18, 2.90, 4.00 SURF_ID='CONCRETE'
PERMIT_HOLE=.TRUE. SAWTOOTH=.TRUE. THICKEN=.FALSE./ sideroof[4][13]
&OBST XB=19.97, 20.00, 4.94, 5.06, 2.93, 4.03 SURF_ID='CONCRETE'
PERMIT_HOLE=.TRUE. SAWTOOTH=.TRUE. THICKEN=.FALSE./ sideroof[4][14]
&OBST XB=19.97, 20.00, 4.82, 4.94, 2.95, 4.06 SURF_ID='CONCRETE'
PERMIT_HOLE=.TRUE. SAWTOOTH=.TRUE. THICKEN=.FALSE./ sideroof[4][15]
&OBST XB=19.97, 20.00, 4.70, 4.82, 2.98, 4.08 SURF_ID='CONCRETE'
PERMIT_HOLE=.TRUE. SAWTOOTH=.TRUE. THICKEN=.FALSE./ sideroof[4][16]
&OBST XB=19.97, 20.00, 4.58, 4.70, 3.00, 4.10 SURF_ID='CONCRETE'
PERMIT_HOLE=.TRUE. SAWTOOTH=.TRUE. THICKEN=.FALSE./ sideroof[4][17]
&OBST XB=19.97, 20.00, 4.46, 4.58, 3.03, 4.13 SURF_ID='CONCRETE'
PERMIT_HOLE=.TRUE. SAWTOOTH=.TRUE. THICKEN=.FALSE./ sideroof[4][18]
&OBST XB=19.97, 20.00, 4.34, 4.46, 3.05, 4.15 SURF_ID='CONCRETE'
PERMIT_HOLE=.TRUE. SAWTOOTH=.TRUE. THICKEN=.FALSE./ sideroof[4][19]
&OBST XB=19.97, 20.00, 4.22, 4.34, 3.08, 4.18 SURF_ID='CONCRETE'
PERMIT_HOLE=.TRUE. SAWTOOTH=.TRUE. THICKEN=.FALSE./ sideroof[4][20]

&OBST XB=19.97, 20.00, 4.10, 4.22, 3.10, 4.20 SURF_ID='CONCRETE'
PERMIT_HOLE=.TRUE. SAWTOOTH=.TRUE. THICKEN=.FALSE./ sideroof[4][21]
&OBST XB=19.97, 20.00, 3.98, 4.10, 3.13, 4.23 SURF_ID='CONCRETE'
PERMIT_HOLE=.TRUE. SAWTOOTH=.TRUE. THICKEN=.FALSE./ sideroof[4][22]
&OBST XB=19.97, 20.00, 3.86, 3.98, 3.16, 4.26 SURF_ID='CONCRETE'
PERMIT_HOLE=.TRUE. SAWTOOTH=.TRUE. THICKEN=.FALSE./ sideroof[4][23]
&OBST XB=19.97, 20.00, 3.74, 3.86, 3.18, 4.28 SURF_ID='CONCRETE'
PERMIT_HOLE=.TRUE. SAWTOOTH=.TRUE. THICKEN=.FALSE./ sideroof[4][24]
&OBST XB=19.97, 20.00, 3.62, 3.74, 3.20, 4.30 SURF_ID='CONCRETE'
PERMIT_HOLE=.TRUE. SAWTOOTH=.TRUE. THICKEN=.FALSE./ sideroof[4][25]
&OBST XB=19.97, 20.00, 3.50, 3.62, 3.23, 4.33 SURF_ID='CONCRETE'
PERMIT_HOLE=.TRUE. SAWTOOTH=.TRUE. THICKEN=.FALSE./ sideroof[4][26]
&OBST XB=19.97, 20.00, 3.38, 3.50, 3.26, 4.35 SURF_ID='CONCRETE'
PERMIT_HOLE=.TRUE. SAWTOOTH=.TRUE. THICKEN=.FALSE./ sideroof[4][27]
&OBST XB=19.97, 20.00, 3.26, 3.38, 3.28, 4.38 SURF_ID='CONCRETE'
PERMIT_HOLE=.TRUE. SAWTOOTH=.TRUE. THICKEN=.FALSE./ sideroof[4][28]
&OBST XB=19.97, 20.00, 3.14, 3.26, 3.30, 4.40 SURF_ID='CONCRETE'
PERMIT_HOLE=.TRUE. SAWTOOTH=.TRUE. THICKEN=.FALSE./ sideroof[4][29]
&OBST XB=19.97, 20.00, 3.02, 3.14, 3.33, 4.43 SURF_ID='CONCRETE'
PERMIT_HOLE=.TRUE. SAWTOOTH=.TRUE. THICKEN=.FALSE./ sideroof[4][30]
&OBST XB=19.97, 20.00, 2.90, 3.02, 3.35, 4.46 SURF_ID='CONCRETE'
PERMIT_HOLE=.TRUE. SAWTOOTH=.TRUE. THICKEN=.FALSE./ sideroof[4][31]
&OBST XB=19.97, 20.00, 2.78, 2.90, 3.38, 4.48 SURF_ID='CONCRETE'
PERMIT_HOLE=.TRUE. SAWTOOTH=.TRUE. THICKEN=.FALSE./ sideroof[4][32]
&OBST XB=19.97, 20.00, 2.66, 2.78, 3.40, 4.50 SURF_ID='CONCRETE'
PERMIT_HOLE=.TRUE. SAWTOOTH=.TRUE. THICKEN=.FALSE./ sideroof[4][33]
&OBST XB=19.97, 20.00, 2.54, 2.66, 3.43, 4.53 SURF_ID='CONCRETE'
PERMIT_HOLE=.TRUE. SAWTOOTH=.TRUE. THICKEN=.FALSE./ sideroof[4][34]
&OBST XB=19.97, 20.00, 2.42, 2.54, 3.45, 4.56 SURF_ID='CONCRETE'
PERMIT_HOLE=.TRUE. SAWTOOTH=.TRUE. THICKEN=.FALSE./ sideroof[4][35]

&OBST XB=19.97, 20.00, 2.30, 2.42, 3.48, 4.58 SURF_ID='CONCRETE'
 PERMIT_HOLE=.TRUE. SAWTOOTH=.TRUE. THICKEN=.FALSE./ sideroof[4][36]
 &OBST XB=19.97, 20.00, 2.18, 2.30, 3.50, 4.60 SURF_ID='CONCRETE'
 PERMIT_HOLE=.TRUE. SAWTOOTH=.TRUE. THICKEN=.FALSE./ sideroof[4][37]
 &OBST XB=19.97, 20.00, 2.06, 2.18, 3.53, 4.63 SURF_ID='CONCRETE'
 PERMIT_HOLE=.TRUE. SAWTOOTH=.TRUE. THICKEN=.FALSE./ sideroof[4][38]
 &OBST XB=19.97, 20.00, 1.94, 2.06, 3.55, 4.65 SURF_ID='CONCRETE'
 PERMIT_HOLE=.TRUE. SAWTOOTH=.TRUE. THICKEN=.FALSE./ sideroof[4][39]
 &OBST XB=19.97, 20.00, 1.82, 1.94, 3.58, 4.68 SURF_ID='CONCRETE'
 PERMIT_HOLE=.TRUE. SAWTOOTH=.TRUE. THICKEN=.FALSE./ sideroof[4][40]
 &OBST XB=19.97, 20.00, 1.70, 1.82, 3.60, 4.70 SURF_ID='CONCRETE'
 PERMIT_HOLE=.TRUE. SAWTOOTH=.TRUE. THICKEN=.FALSE./ sideroof[4][41]
 &OBST XB=19.97, 20.00, 1.58, 1.70, 3.63, 4.73 SURF_ID='CONCRETE'
 PERMIT_HOLE=.TRUE. SAWTOOTH=.TRUE. THICKEN=.FALSE./ sideroof[4][42]
 &OBST XB=19.97, 20.00, 1.46, 1.58, 3.65, 4.76 SURF_ID='CONCRETE'
 PERMIT_HOLE=.TRUE. SAWTOOTH=.TRUE. THICKEN=.FALSE./ sideroof[4][43]
 &OBST XB=19.97, 20.00, 1.34, 1.46, 3.68, 4.78 SURF_ID='CONCRETE'
 PERMIT_HOLE=.TRUE. SAWTOOTH=.TRUE. THICKEN=.FALSE./ sideroof[4][44]
 &OBST XB=19.97, 20.00, 1.22, 1.34, 3.70, 4.80 SURF_ID='CONCRETE'
 PERMIT_HOLE=.TRUE. SAWTOOTH=.TRUE. THICKEN=.FALSE./ sideroof[4][45]
 &OBST XB=19.97, 20.00, 1.10, 1.22, 3.73, 4.83 SURF_ID='CONCRETE'
 PERMIT_HOLE=.TRUE. SAWTOOTH=.TRUE. THICKEN=.FALSE./ sideroof[4][46]
 &OBST XB=19.97, 20.00, 0.98, 1.10, 3.76, 4.85 SURF_ID='CONCRETE'
 PERMIT_HOLE=.TRUE. SAWTOOTH=.TRUE. THICKEN=.FALSE./ sideroof[4][47]
 &OBST XB=19.97, 20.00, 0.86, 0.98, 3.78, 4.88 SURF_ID='CONCRETE'
 PERMIT_HOLE=.TRUE. SAWTOOTH=.TRUE. THICKEN=.FALSE./ sideroof[4][48]
 &OBST XB=1.00, 20.00, 4.10, 4.22, 4.21, 4.24 SURF_ID='CONCRETE'
 PERMIT_HOLE=.TRUE. SAWTOOTH=.TRUE. THICKEN=.FALSE./ Troof2[27]
 &OBST XB=1.00, 20.00, 3.50, 3.62, 4.34, 4.36 SURF_ID='CONCRETE'
 PERMIT_HOLE=.TRUE. SAWTOOTH=.TRUE. THICKEN=.FALSE./ Troof2[22]

&OBST XB=1.00, 20.00, 1.58, 1.70, 4.73, 4.76 SURF_ID='CONCRETE'
 PERMIT_HOLE=.TRUE. SAWTOOTH=.TRUE. THICKEN=.FALSE./ Troof2[6]
 &OBST XB=1.00, 20.00, 5.06, 5.18, 4.01, 4.04 SURF_ID='CONCRETE'
 PERMIT_HOLE=.TRUE. SAWTOOTH=.TRUE. THICKEN=.FALSE./ Troof2[35]
 &OBST XB=1.00, 20.00, 6.74, 6.86, 3.66, 3.68 SURF_ID='CONCRETE'
 PERMIT_HOLE=.TRUE. SAWTOOTH=.TRUE. THICKEN=.FALSE./ Troof2[49]
 &OBST XB=1.00, 20.00, 6.50, 6.62, 3.71, 3.74 SURF_ID='CONCRETE'
 PERMIT_HOLE=.TRUE. SAWTOOTH=.TRUE. THICKEN=.FALSE./ Troof2[47]
 &OBST XB=1.00, 20.00, 1.10, 1.22, 4.84, 4.86 SURF_ID='CONCRETE'
 PERMIT_HOLE=.TRUE. SAWTOOTH=.TRUE. THICKEN=.FALSE./ Troof2[2]
 &OBST XB=1.00, 20.00, 7.10, 7.22, 3.58, 3.61 SURF_ID='CONCRETE'
 PERMIT_HOLE=.TRUE. SAWTOOTH=.TRUE. THICKEN=.FALSE./ Troof2[52]
 &OBST XB=1.00, 20.00, 5.30, 5.42, 3.96, 3.99 SURF_ID='CONCRETE'
 PERMIT_HOLE=.TRUE. SAWTOOTH=.TRUE. THICKEN=.FALSE./ Troof2[37]
 &OBST XB=1.00, 20.00, 2.18, 2.30, 4.61, 4.64 SURF_ID='CONCRETE'
 PERMIT_HOLE=.TRUE. SAWTOOTH=.TRUE. THICKEN=.FALSE./ Troof2[11]
 &OBST XB=1.00, 20.00, 6.98, 7.10, 3.61, 3.64 SURF_ID='CONCRETE'
 PERMIT_HOLE=.TRUE. SAWTOOTH=.TRUE. THICKEN=.FALSE./ Troof2[51]
 &OBST XB=1.00, 20.00, 3.02, 3.14, 4.44, 4.46 SURF_ID='CONCRETE'
 PERMIT_HOLE=.TRUE. SAWTOOTH=.TRUE. THICKEN=.FALSE./ Troof2[18]
 &OBST XB=1.00, 20.00, 1.70, 1.82, 4.71, 4.74 SURF_ID='CONCRETE'
 PERMIT_HOLE=.TRUE. SAWTOOTH=.TRUE. THICKEN=.FALSE./ Troof2[7]
 &OBST XB=1.00, 20.00, 4.46, 4.58, 4.14, 4.16 SURF_ID='CONCRETE'
 PERMIT_HOLE=.TRUE. SAWTOOTH=.TRUE. THICKEN=.FALSE./ Troof2[30]
 &OBST XB=1.00, 20.00, 6.02, 6.14, 3.81, 3.84 SURF_ID='CONCRETE'
 PERMIT_HOLE=.TRUE. SAWTOOTH=.TRUE. THICKEN=.FALSE./ Troof2[43]
 &OBST XB=1.00, 20.00, 0.86, 0.98, 4.88, 4.91 SURF_ID='CONCRETE'
 PERMIT_HOLE=.TRUE. SAWTOOTH=.TRUE. THICKEN=.FALSE./ Troof2
 &OBST XB=1.00, 20.00, 5.54, 5.66, 3.91, 3.94 SURF_ID='CONCRETE'
 PERMIT_HOLE=.TRUE. SAWTOOTH=.TRUE. THICKEN=.FALSE./ Troof2[39]

&OBST XB=1.00, 20.00, 6.26, 6.38, 3.76, 3.78 SURF_ID='CONCRETE'
PERMIT_HOLE=.TRUE. SAWTOOTH=.TRUE. THICKEN=.FALSE./ Troof2[45]
&OBST XB=1.00, 20.00, 1.82, 1.94, 4.68, 4.71 SURF_ID='CONCRETE'
PERMIT_HOLE=.TRUE. SAWTOOTH=.TRUE. THICKEN=.FALSE./ Troof2[8]
&OBST XB=1.00, 20.00, 6.86, 6.98, 3.64, 3.66 SURF_ID='CONCRETE'
PERMIT_HOLE=.TRUE. SAWTOOTH=.TRUE. THICKEN=.FALSE./ Troof2[50]
&OBST XB=1.00, 20.00, 2.42, 2.54, 4.56, 4.58 SURF_ID='CONCRETE'
PERMIT_HOLE=.TRUE. SAWTOOTH=.TRUE. THICKEN=.FALSE./ Troof2[13]
&OBST XB=1.00, 20.00, 2.66, 2.78, 4.51, 4.54 SURF_ID='CONCRETE'
PERMIT_HOLE=.TRUE. SAWTOOTH=.TRUE. THICKEN=.FALSE./ Troof2[15]
&OBST XB=1.00, 20.00, 2.90, 3.02, 4.46, 4.48 SURF_ID='CONCRETE'
PERMIT_HOLE=.TRUE. SAWTOOTH=.TRUE. THICKEN=.FALSE./ Troof2[17]
&OBST XB=1.00, 20.00, 5.90, 6.02, 3.84, 3.86 SURF_ID='CONCRETE'
PERMIT_HOLE=.TRUE. SAWTOOTH=.TRUE. THICKEN=.FALSE./ Troof2[42]
&OBST XB=1.00, 20.00, 6.38, 6.50, 3.73, 3.76 SURF_ID='CONCRETE'
PERMIT_HOLE=.TRUE. SAWTOOTH=.TRUE. THICKEN=.FALSE./ Troof2[46]
&OBST XB=1.00, 20.00, 1.22, 1.34, 4.81, 4.84 SURF_ID='CONCRETE'
PERMIT_HOLE=.TRUE. SAWTOOTH=.TRUE. THICKEN=.FALSE./ Troof2[3]
&OBST XB=1.00, 20.00, 2.78, 2.90, 4.48, 4.51 SURF_ID='CONCRETE'
PERMIT_HOLE=.TRUE. SAWTOOTH=.TRUE. THICKEN=.FALSE./ Troof2[16]
&OBST XB=1.00, 20.00, 2.30, 2.42, 4.58, 4.61 SURF_ID='CONCRETE'
PERMIT_HOLE=.TRUE. SAWTOOTH=.TRUE. THICKEN=.FALSE./ Troof2[12]
&OBST XB=1.00, 20.00, 4.70, 4.82, 4.08, 4.11 SURF_ID='CONCRETE'
PERMIT_HOLE=.TRUE. SAWTOOTH=.TRUE. THICKEN=.FALSE./ Troof2[32]
&OBST XB=1.00, 20.00, 5.78, 5.90, 3.86, 3.88 SURF_ID='CONCRETE'
PERMIT_HOLE=.TRUE. SAWTOOTH=.TRUE. THICKEN=.FALSE./ Troof2[41]
&OBST XB=1.00, 20.00, 1.46, 1.58, 4.76, 4.78 SURF_ID='CONCRETE'
PERMIT_HOLE=.TRUE. SAWTOOTH=.TRUE. THICKEN=.FALSE./ Troof2[5]
&OBST XB=1.00, 20.00, 6.62, 6.74, 3.68, 3.71 SURF_ID='CONCRETE'
PERMIT_HOLE=.TRUE. SAWTOOTH=.TRUE. THICKEN=.FALSE./ Troof2[48]

&OBST XB=1.00, 20.00, 4.58, 4.70, 4.11, 4.14 SURF_ID='CONCRETE'
 PERMIT_HOLE=.TRUE. SAWTOOTH=.TRUE. THICKEN=.FALSE./ Troof2[31]
 &OBST XB=1.00, 20.00, 3.98, 4.10, 4.23, 4.26 SURF_ID='CONCRETE'
 PERMIT_HOLE=.TRUE. SAWTOOTH=.TRUE. THICKEN=.FALSE./ Troof2[26]
 &OBST XB=1.00, 20.00, 2.54, 2.66, 4.54, 4.56 SURF_ID='CONCRETE'
 PERMIT_HOLE=.TRUE. SAWTOOTH=.TRUE. THICKEN=.FALSE./ Troof2[14]
 &OBST XB=1.00, 20.00, 3.14, 3.26, 4.41, 4.44 SURF_ID='CONCRETE'
 PERMIT_HOLE=.TRUE. SAWTOOTH=.TRUE. THICKEN=.FALSE./ Troof2[19]
 &OBST XB=1.00, 20.00, 5.66, 5.78, 3.88, 3.91 SURF_ID='CONCRETE'
 PERMIT_HOLE=.TRUE. SAWTOOTH=.TRUE. THICKEN=.FALSE./ Troof2[40]
 &OBST XB=1.00, 20.00, 3.62, 3.74, 4.31, 4.34 SURF_ID='CONCRETE'
 PERMIT_HOLE=.TRUE. SAWTOOTH=.TRUE. THICKEN=.FALSE./ Troof2[23]
 &OBST XB=1.00, 20.00, 0.83, 0.86, 4.91, 4.94 SURF_ID='CONCRETE'
 PERMIT_HOLE=.TRUE. SAWTOOTH=.TRUE. THICKEN=.FALSE./ Troof1
 &OBST XB=1.00, 20.00, 3.38, 3.50, 4.36, 4.38 SURF_ID='CONCRETE'
 PERMIT_HOLE=.TRUE. SAWTOOTH=.TRUE. THICKEN=.FALSE./ Troof2[21]
 &OBST XB=1.00, 20.00, 2.06, 2.18, 4.64, 4.66 SURF_ID='CONCRETE'
 PERMIT_HOLE=.TRUE. SAWTOOTH=.TRUE. THICKEN=.FALSE./ Troof2[10]
 &OBST XB=1.00, 20.00, 4.82, 4.94, 4.06, 4.08 SURF_ID='CONCRETE'
 PERMIT_HOLE=.TRUE. SAWTOOTH=.TRUE. THICKEN=.FALSE./ Troof2[33]
 &OBST XB=1.00, 20.00, 1.94, 2.06, 4.66, 4.69 SURF_ID='CONCRETE'
 PERMIT_HOLE=.TRUE. SAWTOOTH=.TRUE. THICKEN=.FALSE./ Troof2[9]
 &OBST XB=1.00, 20.00, 6.14, 6.26, 3.78, 3.81 SURF_ID='CONCRETE'
 PERMIT_HOLE=.TRUE. SAWTOOTH=.TRUE. THICKEN=.FALSE./ Troof2[44]
 &OBST XB=1.00, 20.00, 4.34, 4.46, 4.16, 4.19 SURF_ID='CONCRETE'
 PERMIT_HOLE=.TRUE. SAWTOOTH=.TRUE. THICKEN=.FALSE./ Troof2[29]
 &OBST XB=1.00, 20.00, 3.26, 3.38, 4.38, 4.41 SURF_ID='CONCRETE'
 PERMIT_HOLE=.TRUE. SAWTOOTH=.TRUE. THICKEN=.FALSE./ Troof2[20]
 &OBST XB=1.00, 20.00, 0.98, 1.10, 4.86, 4.88 SURF_ID='CONCRETE'
 PERMIT_HOLE=.TRUE. SAWTOOTH=.TRUE. THICKEN=.FALSE./ Troof2[1]

&OBST XB=1.00, 20.00, 5.42, 5.54, 3.93, 3.96 SURF_ID='CONCRETE'
 PERMIT_HOLE=.TRUE. SAWTOOTH=.TRUE. THICKEN=.FALSE./ Troof2[38]
 &OBST XB=1.00, 20.00, 5.18, 5.30, 3.98, 4.01 SURF_ID='CONCRETE'
 PERMIT_HOLE=.TRUE. SAWTOOTH=.TRUE. THICKEN=.FALSE./ Troof2[36]
 &OBST XB=1.00, 20.00, 4.94, 5.06, 4.04, 4.06 SURF_ID='CONCRETE'
 PERMIT_HOLE=.TRUE. SAWTOOTH=.TRUE. THICKEN=.FALSE./ Troof2[34]
 &OBST XB=1.00, 20.00, 3.86, 3.98, 4.26, 4.28 SURF_ID='CONCRETE'
 PERMIT_HOLE=.TRUE. SAWTOOTH=.TRUE. THICKEN=.FALSE./ Troof2[25]
 &OBST XB=1.00, 20.00, 3.74, 3.86, 4.28, 4.31 SURF_ID='CONCRETE'
 PERMIT_HOLE=.TRUE. SAWTOOTH=.TRUE. THICKEN=.FALSE./ Troof2[24]
 &OBST XB=1.00, 20.00, 1.34, 1.46, 4.78, 4.81 SURF_ID='CONCRETE'
 PERMIT_HOLE=.TRUE. SAWTOOTH=.TRUE. THICKEN=.FALSE./ Troof2[4]
 &OBST XB=1.00, 20.00, 4.22, 4.34, 4.18, 4.21 SURF_ID='CONCRETE'
 PERMIT_HOLE=.TRUE. SAWTOOTH=.TRUE. THICKEN=.FALSE./ Troof2[28]
 &OBST XB=17.55, 19.00, 2.00, 2.10, 0.00, 3.20 SURF_ID='CONCRETE'
 PERMIT_HOLE=.FALSE. SAWTOOTH=.TRUE. THICKEN=.FALSE./ Frontwall
 &OBST XB=2.00, 6.25, 2.00, 2.10, 0.00, 3.20 SURF_ID='CONCRETE'
 PERMIT_HOLE=.FALSE. SAWTOOTH=.TRUE. THICKEN=.FALSE./ FrontwallLeft
 &OBST XB=6.25, 10.50, 2.00, 2.10, 2.55, 3.20 SURF_ID='CONCRETE'
 PERMIT_HOLE=.FALSE. SAWTOOTH=.TRUE. THICKEN=.FALSE./ frontUpperwallB
 &OBST XB=10.50, 16.20, 2.00, 2.10, 0.1000, 3.20 SURF_ID='CONCRETE'
 PERMIT_HOLE=.FALSE. SAWTOOTH=.TRUE. THICKEN=.FALSE./ FrontwallMid
 &OBST XB=16.20, 17.55, 2.00, 2.10, 2.55, 3.20 SURF_ID='CONCRETE'
 PERMIT_HOLE=.FALSE. SAWTOOTH=.TRUE. THICKEN=.FALSE./ FrontUppers
 &OBST XB=2.00, 2.10, 2.00, 2.55, 0.2100, 0.4200 SURF_ID='CONCRETE'
 PERMIT_HOLE=.FALSE. SAWTOOTH=.TRUE. THICKEN=.FALSE./ sidewallL[1]
 &OBST XB=2.00, 2.10, 2.00, 7.00, 0.00, 0.2100 SURF_ID='CONCRETE'
 PERMIT_HOLE=.FALSE. SAWTOOTH=.TRUE. THICKEN=.FALSE./ sidewallL
 &OBST XB=2.00, 2.10, 2.00, 7.00, 0.4200, 3.20 SURF_ID='CONCRETE'
 PERMIT_HOLE=.FALSE. SAWTOOTH=.TRUE. THICKEN=.FALSE./ sidewallL[1][1]

&OBST XB=2.00, 2.10, 6.35, 6.90, 0.2100, 0.4200 SURF_ID='CONCRETE'
PERMIT_HOLE=.FALSE. SAWTOOTH=.TRUE. THICKEN=.FALSE./ sidewallL[1][1]
&OBST XB=2.00, 2.03, 6.86, 6.98, 3.20, 3.64 SURF_ID='CONCRETE'
PERMIT_HOLE=.TRUE. SAWTOOTH=.TRUE. THICKEN=.FALSE./ sideroof2
&OBST XB=2.00, 2.03, 6.74, 6.86, 3.20, 3.66 SURF_ID='CONCRETE'
PERMIT_HOLE=.TRUE. SAWTOOTH=.TRUE. THICKEN=.FALSE./ sideroof[3]
&OBST XB=2.00, 2.03, 6.62, 6.74, 3.20, 3.68 SURF_ID='CONCRETE'
PERMIT_HOLE=.TRUE. SAWTOOTH=.TRUE. THICKEN=.FALSE./ sideroof[4]
&OBST XB=2.00, 2.03, 6.50, 6.62, 3.20, 3.70 SURF_ID='CONCRETE'
PERMIT_HOLE=.TRUE. SAWTOOTH=.TRUE. THICKEN=.FALSE./ sideroof[4][1]
&OBST XB=2.00, 2.03, 6.38, 6.50, 3.20, 3.73 SURF_ID='CONCRETE'
PERMIT_HOLE=.TRUE. SAWTOOTH=.TRUE. THICKEN=.FALSE./ sideroof[4][2]
&OBST XB=2.00, 2.03, 6.26, 6.38, 3.20, 3.76 SURF_ID='CONCRETE'
PERMIT_HOLE=.TRUE. SAWTOOTH=.TRUE. THICKEN=.FALSE./ sideroof[4][3]
&OBST XB=2.00, 2.03, 6.14, 6.26, 3.20, 3.78 SURF_ID='CONCRETE'
PERMIT_HOLE=.TRUE. SAWTOOTH=.TRUE. THICKEN=.FALSE./ sideroof[4][4]
&OBST XB=2.00, 2.03, 6.02, 6.14, 3.20, 3.80 SURF_ID='CONCRETE'
PERMIT_HOLE=.TRUE. SAWTOOTH=.TRUE. THICKEN=.FALSE./ sideroof[4][5]
&OBST XB=2.00, 2.03, 5.90, 6.02, 3.20, 3.83 SURF_ID='CONCRETE'
PERMIT_HOLE=.TRUE. SAWTOOTH=.TRUE. THICKEN=.FALSE./ sideroof[4][6]
&OBST XB=2.00, 2.03, 5.78, 5.90, 3.20, 3.85 SURF_ID='CONCRETE'
PERMIT_HOLE=.TRUE. SAWTOOTH=.TRUE. THICKEN=.FALSE./ sideroof[4][7]
&OBST XB=2.00, 2.03, 5.66, 5.78, 3.20, 3.88 SURF_ID='CONCRETE'
PERMIT_HOLE=.TRUE. SAWTOOTH=.TRUE. THICKEN=.FALSE./ sideroof[4][8]
&OBST XB=2.00, 2.03, 5.54, 5.66, 3.20, 3.90 SURF_ID='CONCRETE'
PERMIT_HOLE=.TRUE. SAWTOOTH=.TRUE. THICKEN=.FALSE./ sideroof[4][9]
&OBST XB=2.00, 2.03, 5.42, 5.54, 3.20, 3.93 SURF_ID='CONCRETE'
PERMIT_HOLE=.TRUE. SAWTOOTH=.TRUE. THICKEN=.FALSE./ sideroof[4][10]
&OBST XB=2.00, 2.03, 5.30, 5.42, 3.20, 3.95 SURF_ID='CONCRETE'
PERMIT_HOLE=.TRUE. SAWTOOTH=.TRUE. THICKEN=.FALSE./ sideroof[4][11]

&OBST XB=2.00, 2.03, 5.18, 5.30, 3.20, 3.98 SURF_ID='CONCRETE'
 PERMIT_HOLE=.TRUE. SAWTOOTH=.TRUE. THICKEN=.FALSE./ sideroof[4][12]
 &OBST XB=2.00, 2.03, 5.06, 5.18, 3.20, 4.00 SURF_ID='CONCRETE'
 PERMIT_HOLE=.TRUE. SAWTOOTH=.TRUE. THICKEN=.FALSE./ sideroof[4][13]
 &OBST XB=2.00, 2.03, 4.94, 5.06, 3.20, 4.03 SURF_ID='CONCRETE'
 PERMIT_HOLE=.TRUE. SAWTOOTH=.TRUE. THICKEN=.FALSE./ sideroof[4][14]
 &OBST XB=2.00, 2.03, 4.82, 4.94, 3.20, 4.06 SURF_ID='CONCRETE'
 PERMIT_HOLE=.TRUE. SAWTOOTH=.TRUE. THICKEN=.FALSE./ sideroof[4][15]
 &OBST XB=2.00, 2.03, 4.70, 4.82, 3.20, 4.08 SURF_ID='CONCRETE'
 PERMIT_HOLE=.TRUE. SAWTOOTH=.TRUE. THICKEN=.FALSE./ sideroof[4][16]
 &OBST XB=2.00, 2.03, 4.58, 4.70, 3.20, 4.10 SURF_ID='CONCRETE'
 PERMIT_HOLE=.TRUE. SAWTOOTH=.TRUE. THICKEN=.FALSE./ sideroof[4][17]
 &OBST XB=2.00, 2.03, 4.46, 4.58, 3.20, 4.13 SURF_ID='CONCRETE'
 PERMIT_HOLE=.TRUE. SAWTOOTH=.TRUE. THICKEN=.FALSE./ sideroof[4][18]
 &OBST XB=2.00, 2.03, 4.34, 4.46, 3.20, 4.15 SURF_ID='CONCRETE'
 PERMIT_HOLE=.TRUE. SAWTOOTH=.TRUE. THICKEN=.FALSE./ sideroof[4][19]
 &OBST XB=2.00, 2.03, 4.22, 4.34, 3.20, 4.18 SURF_ID='CONCRETE'
 PERMIT_HOLE=.TRUE. SAWTOOTH=.TRUE. THICKEN=.FALSE./ sideroof[4][20]
 &OBST XB=2.00, 2.03, 4.10, 4.22, 3.20, 4.20 SURF_ID='CONCRETE'
 PERMIT_HOLE=.TRUE. SAWTOOTH=.TRUE. THICKEN=.FALSE./ sideroof[4][21]
 &OBST XB=2.00, 2.03, 3.98, 4.10, 3.20, 4.23 SURF_ID='CONCRETE'
 PERMIT_HOLE=.TRUE. SAWTOOTH=.TRUE. THICKEN=.FALSE./ sideroof[4][22]
 &OBST XB=2.00, 2.03, 3.86, 3.98, 3.20, 4.26 SURF_ID='CONCRETE'
 PERMIT_HOLE=.TRUE. SAWTOOTH=.TRUE. THICKEN=.FALSE./ sideroof[4][23]
 &OBST XB=2.00, 2.03, 3.74, 3.86, 3.20, 4.28 SURF_ID='CONCRETE'
 PERMIT_HOLE=.TRUE. SAWTOOTH=.TRUE. THICKEN=.FALSE./ sideroof[4][24]
 &OBST XB=2.00, 2.03, 3.62, 3.74, 3.20, 4.30 SURF_ID='CONCRETE'
 PERMIT_HOLE=.TRUE. SAWTOOTH=.TRUE. THICKEN=.FALSE./ sideroof[4][25]
 &OBST XB=2.00, 2.03, 3.50, 3.62, 3.20, 4.33 SURF_ID='CONCRETE'
 PERMIT_HOLE=.TRUE. SAWTOOTH=.TRUE. THICKEN=.FALSE./ sideroof[4][26]

&OBST XB=2.00, 2.03, 3.38, 3.50, 3.20, 4.35 SURF_ID='CONCRETE'
 PERMIT_HOLE=.TRUE. SAWTOOTH=.TRUE. THICKEN=.FALSE./ sideroof[4][27]
 &OBST XB=2.00, 2.03, 3.26, 3.38, 3.20, 4.38 SURF_ID='CONCRETE'
 PERMIT_HOLE=.TRUE. SAWTOOTH=.TRUE. THICKEN=.FALSE./ sideroof[4][28]
 &OBST XB=2.00, 2.03, 3.14, 3.26, 3.20, 4.40 SURF_ID='CONCRETE'
 PERMIT_HOLE=.TRUE. SAWTOOTH=.TRUE. THICKEN=.FALSE./ sideroof[4][29]
 &OBST XB=2.00, 2.03, 3.02, 3.14, 3.20, 4.43 SURF_ID='CONCRETE'
 PERMIT_HOLE=.TRUE. SAWTOOTH=.TRUE. THICKEN=.FALSE./ sideroof[4][30]
 &OBST XB=2.00, 2.03, 2.90, 3.02, 3.20, 4.46 SURF_ID='CONCRETE'
 PERMIT_HOLE=.TRUE. SAWTOOTH=.TRUE. THICKEN=.FALSE./ sideroof[4][31]
 &OBST XB=2.00, 2.03, 2.78, 2.90, 3.20, 4.48 SURF_ID='CONCRETE'
 PERMIT_HOLE=.TRUE. SAWTOOTH=.TRUE. THICKEN=.FALSE./ sideroof[4][32]
 &OBST XB=2.00, 2.03, 2.66, 2.78, 3.20, 4.50 SURF_ID='CONCRETE'
 PERMIT_HOLE=.TRUE. SAWTOOTH=.TRUE. THICKEN=.FALSE./ sideroof[4][33]
 &OBST XB=2.00, 2.03, 2.54, 2.66, 3.20, 4.53 SURF_ID='CONCRETE'
 PERMIT_HOLE=.TRUE. SAWTOOTH=.TRUE. THICKEN=.FALSE./ sideroof[4][34]
 &OBST XB=2.00, 2.03, 2.42, 2.54, 3.20, 4.56 SURF_ID='CONCRETE'
 PERMIT_HOLE=.TRUE. SAWTOOTH=.TRUE. THICKEN=.FALSE./ sideroof[4][35]
 &OBST XB=2.00, 2.03, 2.30, 2.42, 3.20, 4.58 SURF_ID='CONCRETE'
 PERMIT_HOLE=.TRUE. SAWTOOTH=.TRUE. THICKEN=.FALSE./ sideroof[4][36]
 &OBST XB=2.00, 2.03, 2.18, 2.30, 3.20, 4.60 SURF_ID='CONCRETE'
 PERMIT_HOLE=.TRUE. SAWTOOTH=.TRUE. THICKEN=.FALSE./ sideroof[4][37]
 &OBST XB=2.00, 2.03, 2.06, 2.18, 3.20, 4.63 SURF_ID='CONCRETE'
 PERMIT_HOLE=.TRUE. SAWTOOTH=.TRUE. THICKEN=.FALSE./ sideroof[4][38]
 &OBST XB=2.00, 2.03, 2.00, 2.06, 3.20, 4.65 SURF_ID='CONCRETE'
 PERMIT_HOLE=.TRUE. SAWTOOTH=.TRUE. THICKEN=.FALSE./ sideroof[4][39]
 &OBST XB=18.97, 19.00, 6.86, 6.98, 3.20, 3.64 SURF_ID='CONCRETE'
 PERMIT_HOLE=.TRUE. SAWTOOTH=.TRUE. THICKEN=.FALSE./ sideroof2
 &OBST XB=18.97, 19.00, 6.74, 6.86, 3.20, 3.66 SURF_ID='CONCRETE'
 PERMIT_HOLE=.TRUE. SAWTOOTH=.TRUE. THICKEN=.FALSE./ sideroof[3]

&OBST XB=18.97, 19.00, 6.62, 6.74, 3.20, 3.68 SURF_ID='CONCRETE'
 PERMIT_HOLE=.TRUE. SAWTOOTH=.TRUE. THICKEN=.FALSE./ sideroof[4]
 &OBST XB=18.97, 19.00, 6.50, 6.62, 3.20, 3.70 SURF_ID='CONCRETE'
 PERMIT_HOLE=.TRUE. SAWTOOTH=.TRUE. THICKEN=.FALSE./ sideroof[4][1]
 &OBST XB=18.97, 19.00, 6.38, 6.50, 3.20, 3.73 SURF_ID='CONCRETE'
 PERMIT_HOLE=.TRUE. SAWTOOTH=.TRUE. THICKEN=.FALSE./ sideroof[4][2]
 &OBST XB=18.97, 19.00, 6.26, 6.38, 3.20, 3.76 SURF_ID='CONCRETE'
 PERMIT_HOLE=.TRUE. SAWTOOTH=.TRUE. THICKEN=.FALSE./ sideroof[4][3]
 &OBST XB=18.97, 19.00, 6.14, 6.26, 3.20, 3.78 SURF_ID='CONCRETE'
 PERMIT_HOLE=.TRUE. SAWTOOTH=.TRUE. THICKEN=.FALSE./ sideroof[4][4]
 &OBST XB=18.97, 19.00, 6.02, 6.14, 3.20, 3.80 SURF_ID='CONCRETE'
 PERMIT_HOLE=.TRUE. SAWTOOTH=.TRUE. THICKEN=.FALSE./ sideroof[4][5]
 &OBST XB=18.97, 19.00, 5.90, 6.02, 3.20, 3.83 SURF_ID='CONCRETE'
 PERMIT_HOLE=.TRUE. SAWTOOTH=.TRUE. THICKEN=.FALSE./ sideroof[4][6]
 &OBST XB=18.97, 19.00, 5.78, 5.90, 3.20, 3.85 SURF_ID='CONCRETE'
 PERMIT_HOLE=.TRUE. SAWTOOTH=.TRUE. THICKEN=.FALSE./ sideroof[4][7]
 &OBST XB=18.97, 19.00, 5.66, 5.78, 3.20, 3.88 SURF_ID='CONCRETE'
 PERMIT_HOLE=.TRUE. SAWTOOTH=.TRUE. THICKEN=.FALSE./ sideroof[4][8]
 &OBST XB=18.97, 19.00, 5.54, 5.66, 3.20, 3.90 SURF_ID='CONCRETE'
 PERMIT_HOLE=.TRUE. SAWTOOTH=.TRUE. THICKEN=.FALSE./ sideroof[4][9]
 &OBST XB=18.97, 19.00, 5.42, 5.54, 3.20, 3.93 SURF_ID='CONCRETE'
 PERMIT_HOLE=.TRUE. SAWTOOTH=.TRUE. THICKEN=.FALSE./ sideroof[4][10]
 &OBST XB=18.97, 19.00, 5.30, 5.42, 3.20, 3.95 SURF_ID='CONCRETE'
 PERMIT_HOLE=.TRUE. SAWTOOTH=.TRUE. THICKEN=.FALSE./ sideroof[4][11]
 &OBST XB=18.97, 19.00, 5.18, 5.30, 3.20, 3.98 SURF_ID='CONCRETE'
 PERMIT_HOLE=.TRUE. SAWTOOTH=.TRUE. THICKEN=.FALSE./ sideroof[4][12]
 &OBST XB=18.97, 19.00, 5.06, 5.18, 3.20, 4.00 SURF_ID='CONCRETE'
 PERMIT_HOLE=.TRUE. SAWTOOTH=.TRUE. THICKEN=.FALSE./ sideroof[4][13]
 &OBST XB=18.97, 19.00, 4.94, 5.06, 3.20, 4.03 SURF_ID='CONCRETE'
 PERMIT_HOLE=.TRUE. SAWTOOTH=.TRUE. THICKEN=.FALSE./ sideroof[4][14]

&OBST XB=18.97, 19.00, 4.82, 4.94, 3.20, 4.06 SURF_ID='CONCRETE'
PERMIT_HOLE=.TRUE. SAWTOOTH=.TRUE. THICKEN=.FALSE./ sideroof[4][15]
&OBST XB=18.97, 19.00, 4.70, 4.82, 3.20, 4.08 SURF_ID='CONCRETE'
PERMIT_HOLE=.TRUE. SAWTOOTH=.TRUE. THICKEN=.FALSE./ sideroof[4][16]
&OBST XB=18.97, 19.00, 4.58, 4.70, 3.20, 4.10 SURF_ID='CONCRETE'
PERMIT_HOLE=.TRUE. SAWTOOTH=.TRUE. THICKEN=.FALSE./ sideroof[4][17]
&OBST XB=18.97, 19.00, 4.46, 4.58, 3.20, 4.13 SURF_ID='CONCRETE'
PERMIT_HOLE=.TRUE. SAWTOOTH=.TRUE. THICKEN=.FALSE./ sideroof[4][18]
&OBST XB=18.97, 19.00, 4.34, 4.46, 3.20, 4.15 SURF_ID='CONCRETE'
PERMIT_HOLE=.TRUE. SAWTOOTH=.TRUE. THICKEN=.FALSE./ sideroof[4][19]
&OBST XB=18.97, 19.00, 4.22, 4.34, 3.20, 4.18 SURF_ID='CONCRETE'
PERMIT_HOLE=.TRUE. SAWTOOTH=.TRUE. THICKEN=.FALSE./ sideroof[4][20]
&OBST XB=18.97, 19.00, 4.10, 4.22, 3.20, 4.20 SURF_ID='CONCRETE'
PERMIT_HOLE=.TRUE. SAWTOOTH=.TRUE. THICKEN=.FALSE./ sideroof[4][21]
&OBST XB=18.97, 19.00, 3.98, 4.10, 3.20, 4.23 SURF_ID='CONCRETE'
PERMIT_HOLE=.TRUE. SAWTOOTH=.TRUE. THICKEN=.FALSE./ sideroof[4][22]
&OBST XB=18.97, 19.00, 3.86, 3.98, 3.20, 4.26 SURF_ID='CONCRETE'
PERMIT_HOLE=.TRUE. SAWTOOTH=.TRUE. THICKEN=.FALSE./ sideroof[4][23]
&OBST XB=18.97, 19.00, 3.74, 3.86, 3.20, 4.28 SURF_ID='CONCRETE'
PERMIT_HOLE=.TRUE. SAWTOOTH=.TRUE. THICKEN=.FALSE./ sideroof[4][24]
&OBST XB=18.97, 19.00, 3.62, 3.74, 3.20, 4.30 SURF_ID='CONCRETE'
PERMIT_HOLE=.TRUE. SAWTOOTH=.TRUE. THICKEN=.FALSE./ sideroof[4][25]
&OBST XB=18.97, 19.00, 3.50, 3.62, 3.20, 4.33 SURF_ID='CONCRETE'
PERMIT_HOLE=.TRUE. SAWTOOTH=.TRUE. THICKEN=.FALSE./ sideroof[4][26]
&OBST XB=18.97, 19.00, 3.38, 3.50, 3.20, 4.35 SURF_ID='CONCRETE'
PERMIT_HOLE=.TRUE. SAWTOOTH=.TRUE. THICKEN=.FALSE./ sideroof[4][27]
&OBST XB=18.97, 19.00, 3.26, 3.38, 3.20, 4.38 SURF_ID='CONCRETE'
PERMIT_HOLE=.TRUE. SAWTOOTH=.TRUE. THICKEN=.FALSE./ sideroof[4][28]
&OBST XB=18.97, 19.00, 3.14, 3.26, 3.20, 4.40 SURF_ID='CONCRETE'
PERMIT_HOLE=.TRUE. SAWTOOTH=.TRUE. THICKEN=.FALSE./ sideroof[4][29]

&OBST XB=18.97, 19.00, 3.02, 3.14, 3.20, 4.43 SURF_ID='CONCRETE'
 PERMIT_HOLE=.TRUE. SAWTOOTH=.TRUE. THICKEN=.FALSE./ sideroof[4][30]
 &OBST XB=18.97, 19.00, 2.90, 3.02, 3.20, 4.46 SURF_ID='CONCRETE'
 PERMIT_HOLE=.TRUE. SAWTOOTH=.TRUE. THICKEN=.FALSE./ sideroof[4][31]
 &OBST XB=18.97, 19.00, 2.78, 2.90, 3.20, 4.48 SURF_ID='CONCRETE'
 PERMIT_HOLE=.TRUE. SAWTOOTH=.TRUE. THICKEN=.FALSE./ sideroof[4][32]
 &OBST XB=18.97, 19.00, 2.66, 2.78, 3.20, 4.50 SURF_ID='CONCRETE'
 PERMIT_HOLE=.TRUE. SAWTOOTH=.TRUE. THICKEN=.FALSE./ sideroof[4][33]
 &OBST XB=18.97, 19.00, 2.54, 2.66, 3.20, 4.53 SURF_ID='CONCRETE'
 PERMIT_HOLE=.TRUE. SAWTOOTH=.TRUE. THICKEN=.FALSE./ sideroof[4][34]
 &OBST XB=18.97, 19.00, 2.42, 2.54, 3.20, 4.56 SURF_ID='CONCRETE'
 PERMIT_HOLE=.TRUE. SAWTOOTH=.TRUE. THICKEN=.FALSE./ sideroof[4][35]
 &OBST XB=18.97, 19.00, 2.30, 2.42, 3.20, 4.58 SURF_ID='CONCRETE'
 PERMIT_HOLE=.TRUE. SAWTOOTH=.TRUE. THICKEN=.FALSE./ sideroof[4][36]
 &OBST XB=18.97, 19.00, 2.18, 2.30, 3.20, 4.60 SURF_ID='CONCRETE'
 PERMIT_HOLE=.TRUE. SAWTOOTH=.TRUE. THICKEN=.FALSE./ sideroof[4][37]
 &OBST XB=18.97, 19.00, 2.06, 2.18, 3.20, 4.63 SURF_ID='CONCRETE'
 PERMIT_HOLE=.TRUE. SAWTOOTH=.TRUE. THICKEN=.FALSE./ sideroof[4][38]
 &OBST XB=18.97, 19.00, 2.00, 2.06, 3.20, 4.65 SURF_ID='CONCRETE'
 PERMIT_HOLE=.TRUE. SAWTOOTH=.TRUE. THICKEN=.FALSE./ sideroof[4][39]
 &OBST XB=18.90, 19.00, 2.00, 7.00, 0.00, 0.2100 SURF_ID='CONCRETE'
 PERMIT_HOLE=.FALSE. SAWTOOTH=.TRUE. THICKEN=.FALSE./ sidewallR
 &OBST XB=18.90, 19.00, 2.00, 2.55, 0.2100, 0.4200 SURF_ID='CONCRETE'
 PERMIT_HOLE=.FALSE. SAWTOOTH=.TRUE. THICKEN=.FALSE./ sidewallR[1]
 &OBST XB=18.90, 19.00, 2.00, 7.00, 0.4200, 3.20 SURF_ID='CONCRETE'
 PERMIT_HOLE=.FALSE. SAWTOOTH=.TRUE. THICKEN=.FALSE./ sidewallR[1][1]
 &OBST XB=18.90, 19.00, 6.40, 6.95, 0.2100, 0.4200 SURF_ID='CONCRETE'
 PERMIT_HOLE=.FALSE. SAWTOOTH=.TRUE. THICKEN=.FALSE./ sidewallR[1][1]
 &OBST XB=17.85, 18.00, 6.90, 7.00, 0.2100, 0.4200 SURF_ID='CONCRETE'
 PERMIT_HOLE=.FALSE. SAWTOOTH=.TRUE. THICKEN=.FALSE./ windblock[B]

&OBST XB=17.30, 17.45, 6.90, 7.00, 0.2100, 0.4200 SURF_ID='CONCRETE'
PERMIT_HOLE=.FALSE. SAWTOOTH=.TRUE. THICKEN=.FALSE./ windblock[B][1]
&OBST XB=16.75, 16.90, 6.90, 7.00, 0.2100, 0.4200 SURF_ID='CONCRETE'
PERMIT_HOLE=.FALSE. SAWTOOTH=.TRUE. THICKEN=.FALSE./ windblock[B][2]
&OBST XB=16.20, 16.35, 6.90, 7.00, 0.2100, 0.4200 SURF_ID='CONCRETE'
PERMIT_HOLE=.FALSE. SAWTOOTH=.TRUE. THICKEN=.FALSE./ windblock[B][3]
&OBST XB=15.65, 15.80, 6.90, 7.00, 0.2100, 0.4200 SURF_ID='CONCRETE'
PERMIT_HOLE=.FALSE. SAWTOOTH=.TRUE. THICKEN=.FALSE./ windblock[B][4]
&OBST XB=15.10, 15.25, 6.90, 7.00, 0.2100, 0.4200 SURF_ID='CONCRETE'
PERMIT_HOLE=.FALSE. SAWTOOTH=.TRUE. THICKEN=.FALSE./ windblock[B][5]
&OBST XB=14.55, 14.70, 6.90, 7.00, 0.2100, 0.4200 SURF_ID='CONCRETE'
PERMIT_HOLE=.FALSE. SAWTOOTH=.TRUE. THICKEN=.FALSE./ windblock[B][6]
&OBST XB=14.00, 14.15, 6.90, 7.00, 0.2100, 0.4200 SURF_ID='CONCRETE'
PERMIT_HOLE=.FALSE. SAWTOOTH=.TRUE. THICKEN=.FALSE./ windblock[B][7]
&OBST XB=13.45, 13.60, 6.90, 7.00, 0.2100, 0.4200 SURF_ID='CONCRETE'
PERMIT_HOLE=.FALSE. SAWTOOTH=.TRUE. THICKEN=.FALSE./ windblock[B][8]
&OBST XB=12.90, 13.05, 6.90, 7.00, 0.2100, 0.4200 SURF_ID='CONCRETE'
PERMIT_HOLE=.FALSE. SAWTOOTH=.TRUE. THICKEN=.FALSE./ windblock[B][9]
&OBST XB=12.35, 12.50, 6.90, 7.00, 0.2100, 0.4200 SURF_ID='CONCRETE'
PERMIT_HOLE=.FALSE. SAWTOOTH=.TRUE. THICKEN=.FALSE./ windblock[B][10]
&OBST XB=11.80, 11.95, 6.90, 7.00, 0.2100, 0.4200 SURF_ID='CONCRETE'
PERMIT_HOLE=.FALSE. SAWTOOTH=.TRUE. THICKEN=.FALSE./ windblock[B][11]
&OBST XB=11.25, 11.40, 6.90, 7.00, 0.2100, 0.4200 SURF_ID='CONCRETE'
PERMIT_HOLE=.FALSE. SAWTOOTH=.TRUE. THICKEN=.FALSE./ windblock[B][12]
&OBST XB=10.70, 10.85, 6.90, 7.00, 0.2100, 0.4200 SURF_ID='CONCRETE'
PERMIT_HOLE=.FALSE. SAWTOOTH=.TRUE. THICKEN=.FALSE./ windblock[B][13]
&OBST XB=10.15, 10.30, 6.90, 7.00, 0.2100, 0.4200 SURF_ID='CONCRETE'
PERMIT_HOLE=.FALSE. SAWTOOTH=.TRUE. THICKEN=.FALSE./ windblock[B][14]
&OBST XB=9.60, 9.75, 6.90, 7.00, 0.2100, 0.4200 SURF_ID='CONCRETE'
PERMIT_HOLE=.FALSE. SAWTOOTH=.TRUE. THICKEN=.FALSE./ windblock[B][15]

&OBST XB=9.05, 9.20, 6.90, 7.00, 0.2100, 0.4200 SURF_ID='CONCRETE'
PERMIT_HOLE=.FALSE. SAWTOOTH=.TRUE. THICKEN=.FALSE./ windblock[B][16]
&OBST XB=8.50, 8.65, 6.90, 7.00, 0.2100, 0.4200 SURF_ID='CONCRETE'
PERMIT_HOLE=.FALSE. SAWTOOTH=.TRUE. THICKEN=.FALSE./ windblock[B][17]
&OBST XB=7.95, 8.10, 6.90, 7.00, 0.2100, 0.4200 SURF_ID='CONCRETE'
PERMIT_HOLE=.FALSE. SAWTOOTH=.TRUE. THICKEN=.FALSE./ windblock[B][18]
&OBST XB=7.40, 7.55, 6.90, 7.00, 0.2100, 0.4200 SURF_ID='CONCRETE'
PERMIT_HOLE=.FALSE. SAWTOOTH=.TRUE. THICKEN=.FALSE./ windblock[B][19]
&OBST XB=6.85, 7.00, 6.90, 7.00, 0.2100, 0.4200 SURF_ID='CONCRETE'
PERMIT_HOLE=.FALSE. SAWTOOTH=.TRUE. THICKEN=.FALSE./ windblock[B][20]
&OBST XB=6.30, 6.45, 6.90, 7.00, 0.2100, 0.4200 SURF_ID='CONCRETE'
PERMIT_HOLE=.FALSE. SAWTOOTH=.TRUE. THICKEN=.FALSE./ windblock[B][21]
&OBST XB=5.75, 5.90, 6.90, 7.00, 0.2100, 0.4200 SURF_ID='CONCRETE'
PERMIT_HOLE=.FALSE. SAWTOOTH=.TRUE. THICKEN=.FALSE./ windblock[B][22]
&OBST XB=5.20, 5.35, 6.90, 7.00, 0.2100, 0.4200 SURF_ID='CONCRETE'
PERMIT_HOLE=.FALSE. SAWTOOTH=.TRUE. THICKEN=.FALSE./ windblock[B][23]
&OBST XB=4.65, 4.80, 6.90, 7.00, 0.2100, 0.4200 SURF_ID='CONCRETE'
PERMIT_HOLE=.FALSE. SAWTOOTH=.TRUE. THICKEN=.FALSE./ windblock[B][24]
&OBST XB=4.10, 4.25, 6.90, 7.00, 0.2100, 0.4200 SURF_ID='CONCRETE'
PERMIT_HOLE=.FALSE. SAWTOOTH=.TRUE. THICKEN=.FALSE./ windblock[B][25]
&OBST XB=3.55, 3.70, 6.90, 7.00, 0.2100, 0.4200 SURF_ID='CONCRETE'
PERMIT_HOLE=.FALSE. SAWTOOTH=.TRUE. THICKEN=.FALSE./ windblock[B][26]
&OBST XB=3.00, 3.15, 6.90, 7.00, 0.2100, 0.4200 SURF_ID='CONCRETE'
PERMIT_HOLE=.FALSE. SAWTOOTH=.TRUE. THICKEN=.FALSE./ windblock[B][27]
&OBST XB=2.00, 2.10, 2.95, 3.10, 0.2100, 0.4200 SURF_ID='CONCRETE'
PERMIT_HOLE=.FALSE. SAWTOOTH=.TRUE. THICKEN=.FALSE./ windblock
&OBST XB=2.00, 2.10, 3.50, 3.65, 0.2100, 0.4200 SURF_ID='CONCRETE'
PERMIT_HOLE=.FALSE. SAWTOOTH=.TRUE. THICKEN=.FALSE./ windblock[1]
&OBST XB=2.00, 2.10, 4.05, 4.20, 0.2100, 0.4200 SURF_ID='CONCRETE'
PERMIT_HOLE=.FALSE. SAWTOOTH=.TRUE. THICKEN=.FALSE./ windblock[2]

&OBST XB=2.00, 2.10, 4.60, 4.75, 0.2100, 0.4200 SURF_ID='CONCRETE'
 PERMIT_HOLE=.FALSE. SAWTOOTH=.TRUE. THICKEN=.FALSE./ windblock[3]
 &OBST XB=2.00, 2.10, 5.15, 5.30, 0.2100, 0.4200 SURF_ID='CONCRETE'
 PERMIT_HOLE=.FALSE. SAWTOOTH=.TRUE. THICKEN=.FALSE./ windblock[4]
 &OBST XB=2.00, 2.10, 5.70, 5.85, 0.2100, 0.4200 SURF_ID='CONCRETE'
 PERMIT_HOLE=.FALSE. SAWTOOTH=.TRUE. THICKEN=.FALSE./ windblock[5]
 &OBST XB=2.00, 2.10, 6.20, 6.40, 0.2100, 0.4200 SURF_ID='CONCRETE'
 PERMIT_HOLE=.FALSE. SAWTOOTH=.TRUE. THICKEN=.FALSE./ windblock[6]
 &OBST XB=18.90, 19.00, 2.95, 3.10, 0.2100, 0.4200 SURF_ID='CONCRETE'
 PERMIT_HOLE=.FALSE. SAWTOOTH=.TRUE. THICKEN=.FALSE./ windblock
 &OBST XB=18.90, 19.00, 3.50, 3.65, 0.2100, 0.4200 SURF_ID='CONCRETE'
 PERMIT_HOLE=.FALSE. SAWTOOTH=.TRUE. THICKEN=.FALSE./ windblock[1]
 &OBST XB=18.90, 19.00, 4.05, 4.20, 0.2100, 0.4200 SURF_ID='CONCRETE'
 PERMIT_HOLE=.FALSE. SAWTOOTH=.TRUE. THICKEN=.FALSE./ windblock[2]
 &OBST XB=18.90, 19.00, 4.60, 4.75, 0.2100, 0.4200 SURF_ID='CONCRETE'
 PERMIT_HOLE=.FALSE. SAWTOOTH=.TRUE. THICKEN=.FALSE./ windblock[3]
 &OBST XB=18.90, 19.00, 5.15, 5.30, 0.2100, 0.4200 SURF_ID='CONCRETE'
 PERMIT_HOLE=.FALSE. SAWTOOTH=.TRUE. THICKEN=.FALSE./ windblock[4]
 &OBST XB=18.90, 19.00, 5.70, 5.85, 0.2100, 0.4200 SURF_ID='CONCRETE'
 PERMIT_HOLE=.FALSE. SAWTOOTH=.TRUE. THICKEN=.FALSE./ windblock[5]
 &OBST XB=18.90, 19.00, 6.20, 6.40, 0.2100, 0.4200 SURF_ID='CONCRETE'
 PERMIT_HOLE=.FALSE. SAWTOOTH=.TRUE. THICKEN=.FALSE./ windblock[6]
 &OBST XB=2.00, 19.00, 6.90, 7.00, 0.00, 0.2100 SURF_ID='CONCRETE'
 PERMIT_HOLE=.FALSE. SAWTOOTH=.TRUE. THICKEN=.FALSE./ rearwall
 &OBST XB=2.00, 2.55, 6.90, 7.00, 0.2100, 0.4200 SURF_ID='CONCRETE'
 PERMIT_HOLE=.FALSE. SAWTOOTH=.TRUE. THICKEN=.FALSE./ rearwall[1]
 &OBST XB=2.00, 19.00, 6.90, 7.00, 0.4200, 3.20 SURF_ID='CONCRETE'
 PERMIT_HOLE=.FALSE. SAWTOOTH=.TRUE. THICKEN=.FALSE./ rearwall[1]
 &OBST XB=18.44, 18.99, 6.90, 7.00, 0.2100, 0.4200 SURF_ID='CONCRETE'
 PERMIT_HOLE=.FALSE. SAWTOOTH=.TRUE. THICKEN=.FALSE./ rearwall[1][1]

&OBST XB=2.00, 19.00, 6.90, 7.00, 3.20, 3.60 SURF_ID='CONCRETE'
 PERMIT_HOLE=.TRUE. SAWTOOTH=.TRUE. THICKEN=.FALSE./ rearUpper
 &OBST XB=6.25, 10.50, 2.00, 2.10, 0.1000, 2.55 SURF_ID='SHEET METAL'
 PERMIT_HOLE=.FALSE. SAWTOOTH=.TRUE. THICKEN=.FALSE./ doorBig
 &OBST XB=16.20, 17.55, 2.00, 2.10, 0.1000, 2.55 SURF_ID='SHEET METAL'
 PERMIT_HOLE=.FALSE. SAWTOOTH=.TRUE. THICKEN=.FALSE./ smalldoor
 &OBST XB=2.00, 19.00, 2.00, 2.10, 3.20, 4.65 SURF_ID='CONCRETE'
 PERMIT_HOLE=.TRUE. SAWTOOTH=.TRUE. THICKEN=.FALSE./ frontwallup
 &OBST XB=18.95, 19.00, 2.55, 3.00, 0.3200, 0.4200 SURF_ID='CONCRETE'
 PERMIT_HOLE=.FALSE. SAWTOOTH=.TRUE. THICKEN=.FALSE./ windblockR1
 &OBST XB=18.95, 19.00, 3.10, 3.55, 0.3200, 0.4200 SURF_ID='CONCRETE'
 PERMIT_HOLE=.FALSE. SAWTOOTH=.TRUE. THICKEN=.FALSE./ windblockR1[1]
 &OBST XB=18.95, 19.00, 3.65, 4.10, 0.3200, 0.4200 SURF_ID='CONCRETE'
 PERMIT_HOLE=.FALSE. SAWTOOTH=.TRUE. THICKEN=.FALSE./ windblockR1[2]
 &OBST XB=18.95, 19.00, 4.20, 4.65, 0.3200, 0.4200 SURF_ID='CONCRETE'
 PERMIT_HOLE=.FALSE. SAWTOOTH=.TRUE. THICKEN=.FALSE./ windblockR1[3]
 &OBST XB=18.95, 19.00, 4.75, 5.20, 0.3200, 0.4200 SURF_ID='CONCRETE'
 PERMIT_HOLE=.FALSE. SAWTOOTH=.TRUE. THICKEN=.FALSE./ windblockR1[4]
 &OBST XB=18.95, 19.00, 5.30, 5.75, 0.3200, 0.4200 SURF_ID='CONCRETE'
 PERMIT_HOLE=.FALSE. SAWTOOTH=.TRUE. THICKEN=.FALSE./ windblockR1[5]
 &OBST XB=18.95, 19.00, 5.85, 6.30, 0.3200, 0.4200 SURF_ID='CONCRETE'
 PERMIT_HOLE=.FALSE. SAWTOOTH=.TRUE. THICKEN=.FALSE./ windblockR1[6]
 &OBST XB=2.00, 2.05, 2.55, 3.00, 0.3200, 0.4200 SURF_ID='CONCRETE'
 PERMIT_HOLE=.FALSE. SAWTOOTH=.TRUE. THICKEN=.FALSE./ windblockR1
 &OBST XB=2.00, 2.05, 3.10, 3.55, 0.3200, 0.4200 SURF_ID='CONCRETE'
 PERMIT_HOLE=.FALSE. SAWTOOTH=.TRUE. THICKEN=.FALSE./ windblockR1[1]
 &OBST XB=2.00, 2.05, 3.65, 4.10, 0.3200, 0.4200 SURF_ID='CONCRETE'
 PERMIT_HOLE=.FALSE. SAWTOOTH=.TRUE. THICKEN=.FALSE./ windblockR1[2]
 &OBST XB=2.00, 2.05, 4.20, 4.65, 0.3200, 0.4200 SURF_ID='CONCRETE'
 PERMIT_HOLE=.FALSE. SAWTOOTH=.TRUE. THICKEN=.FALSE./ windblockR1[3]

&OBST XB=2.00, 2.05, 4.75, 5.20, 0.3200, 0.4200 SURF_ID='CONCRETE'
PERMIT_HOLE=.FALSE. SAWTOOTH=.TRUE. THICKEN=.FALSE./ windblockR1[4]
&OBST XB=2.00, 2.05, 5.30, 5.75, 0.3200, 0.4200 SURF_ID='CONCRETE'
PERMIT_HOLE=.FALSE. SAWTOOTH=.TRUE. THICKEN=.FALSE./ windblockR1[5]
&OBST XB=2.00, 2.05, 5.85, 6.30, 0.3200, 0.4200 SURF_ID='CONCRETE'
PERMIT_HOLE=.FALSE. SAWTOOTH=.TRUE. THICKEN=.FALSE./ windblockR1[6]
&OBST XB=18.00, 18.44, 6.95, 7.00, 0.3200, 0.4200 SURF_ID='CONCRETE'
PERMIT_HOLE=.FALSE. SAWTOOTH=.TRUE. THICKEN=.FALSE./ ConcreatBRear
&OBST XB=17.45, 17.89, 6.95, 7.00, 0.3200, 0.4200 SURF_ID='CONCRETE'
PERMIT_HOLE=.FALSE. SAWTOOTH=.TRUE. THICKEN=.FALSE./ ConcreatBRear[1]
&OBST XB=16.90, 17.34, 6.95, 7.00, 0.3200, 0.4200 SURF_ID='CONCRETE'
PERMIT_HOLE=.FALSE. SAWTOOTH=.TRUE. THICKEN=.FALSE./ ConcreatBRear[2]
&OBST XB=16.35, 16.79, 6.95, 7.00, 0.3200, 0.4200 SURF_ID='CONCRETE'
PERMIT_HOLE=.FALSE. SAWTOOTH=.TRUE. THICKEN=.FALSE./ ConcreatBRear[3]
&OBST XB=15.80, 16.24, 6.95, 7.00, 0.3200, 0.4200 SURF_ID='CONCRETE'
PERMIT_HOLE=.FALSE. SAWTOOTH=.TRUE. THICKEN=.FALSE./ ConcreatBRear[4]
&OBST XB=15.25, 15.69, 6.95, 7.00, 0.3200, 0.4200 SURF_ID='CONCRETE'
PERMIT_HOLE=.FALSE. SAWTOOTH=.TRUE. THICKEN=.FALSE./ ConcreatBRear[5]
&OBST XB=14.70, 15.14, 6.95, 7.00, 0.3200, 0.4200 SURF_ID='CONCRETE'
PERMIT_HOLE=.FALSE. SAWTOOTH=.TRUE. THICKEN=.FALSE./ ConcreatBRear[6]
&OBST XB=14.15, 14.59, 6.95, 7.00, 0.3200, 0.4200 SURF_ID='CONCRETE'
PERMIT_HOLE=.FALSE. SAWTOOTH=.TRUE. THICKEN=.FALSE./ ConcreatBRear[7]
&OBST XB=13.60, 14.04, 6.95, 7.00, 0.3200, 0.4200 SURF_ID='CONCRETE'
PERMIT_HOLE=.FALSE. SAWTOOTH=.TRUE. THICKEN=.FALSE./ ConcreatBRear[8]
&OBST XB=13.05, 13.49, 6.95, 7.00, 0.3200, 0.4200 SURF_ID='CONCRETE'
PERMIT_HOLE=.FALSE. SAWTOOTH=.TRUE. THICKEN=.FALSE./ ConcreatBRear[9]
&OBST XB=12.50, 12.94, 6.95, 7.00, 0.3200, 0.4200 SURF_ID='CONCRETE'
PERMIT_HOLE=.FALSE. SAWTOOTH=.TRUE. THICKEN=.FALSE./ ConcreatBRear[10]
&OBST XB=11.95, 12.39, 6.95, 7.00, 0.3200, 0.4200 SURF_ID='CONCRETE'
PERMIT_HOLE=.FALSE. SAWTOOTH=.TRUE. THICKEN=.FALSE./ ConcreatBRear[11]

&OBST XB=11.40, 11.84, 6.95, 7.00, 0.3200, 0.4200 SURF_ID='CONCRETE'
PERMIT_HOLE=.FALSE. SAWTOOTH=.TRUE. THICKEN=.FALSE./ ConcreatBRear[12]
&OBST XB=10.85, 11.29, 6.95, 7.00, 0.3200, 0.4200 SURF_ID='CONCRETE'
PERMIT_HOLE=.FALSE. SAWTOOTH=.TRUE. THICKEN=.FALSE./ ConcreatBRear[13]
&OBST XB=10.30, 10.74, 6.95, 7.00, 0.3200, 0.4200 SURF_ID='CONCRETE'
PERMIT_HOLE=.FALSE. SAWTOOTH=.TRUE. THICKEN=.FALSE./ ConcreatBRear[14]
&OBST XB=9.75, 10.19, 6.95, 7.00, 0.3200, 0.4200 SURF_ID='CONCRETE'
PERMIT_HOLE=.FALSE. SAWTOOTH=.TRUE. THICKEN=.FALSE./ ConcreatBRear[15]
&OBST XB=9.20, 9.64, 6.95, 7.00, 0.3200, 0.4200 SURF_ID='CONCRETE'
PERMIT_HOLE=.FALSE. SAWTOOTH=.TRUE. THICKEN=.FALSE./ ConcreatBRear[16]
&OBST XB=8.65, 9.09, 6.95, 7.00, 0.3200, 0.4200 SURF_ID='CONCRETE'
PERMIT_HOLE=.FALSE. SAWTOOTH=.TRUE. THICKEN=.FALSE./ ConcreatBRear[17]
&OBST XB=8.10, 8.54, 6.95, 7.00, 0.3200, 0.4200 SURF_ID='CONCRETE'
PERMIT_HOLE=.FALSE. SAWTOOTH=.TRUE. THICKEN=.FALSE./ ConcreatBRear[18]
&OBST XB=7.55, 7.99, 6.95, 7.00, 0.3200, 0.4200 SURF_ID='CONCRETE'
PERMIT_HOLE=.FALSE. SAWTOOTH=.TRUE. THICKEN=.FALSE./ ConcreatBRear[19]
&OBST XB=7.00, 7.44, 6.95, 7.00, 0.3200, 0.4200 SURF_ID='CONCRETE'
PERMIT_HOLE=.FALSE. SAWTOOTH=.TRUE. THICKEN=.FALSE./ ConcreatBRear[20]
&OBST XB=6.45, 6.89, 6.95, 7.00, 0.3200, 0.4200 SURF_ID='CONCRETE'
PERMIT_HOLE=.FALSE. SAWTOOTH=.TRUE. THICKEN=.FALSE./ ConcreatBRear[21]
&OBST XB=5.90, 6.34, 6.95, 7.00, 0.3200, 0.4200 SURF_ID='CONCRETE'
PERMIT_HOLE=.FALSE. SAWTOOTH=.TRUE. THICKEN=.FALSE./ ConcreatBRear[22]
&OBST XB=5.35, 5.79, 6.95, 7.00, 0.3200, 0.4200 SURF_ID='CONCRETE'
PERMIT_HOLE=.FALSE. SAWTOOTH=.TRUE. THICKEN=.FALSE./ ConcreatBRear[23]
&OBST XB=4.80, 5.24, 6.95, 7.00, 0.3200, 0.4200 SURF_ID='CONCRETE'
PERMIT_HOLE=.FALSE. SAWTOOTH=.TRUE. THICKEN=.FALSE./ ConcreatBRear[24]
&OBST XB=4.25, 4.69, 6.95, 7.00, 0.3200, 0.4200 SURF_ID='CONCRETE'
PERMIT_HOLE=.FALSE. SAWTOOTH=.TRUE. THICKEN=.FALSE./ ConcreatBRear[25]
&OBST XB=3.70, 4.14, 6.95, 7.00, 0.3200, 0.4200 SURF_ID='CONCRETE'
PERMIT_HOLE=.FALSE. SAWTOOTH=.TRUE. THICKEN=.FALSE./ ConcreatBRear[26]

```

&OBST XB=3.15, 3.59, 6.95, 7.00, 0.3200, 0.4200 SURF_ID='CONCRETE'
PERMIT_HOLE=.FALSE. SAWTOOTH=.TRUE. THICKEN=.FALSE./ ConcreatBRear[27]
&OBST XB=2.55, 3.04, 6.95, 7.00, 0.3200, 0.4200 SURF_ID='CONCRETE'
PERMIT_HOLE=.FALSE. SAWTOOTH=.TRUE. THICKEN=.FALSE./ ConcreatBRear[28]
&PL3D QUANTITIES='W-VELOCITY', 'U-VELOCITY', 'V-VELOCITY', 'HRRPUV',
'TEMPERATURE' WRITE_XYZ=.FALSE./
*****REACTION METHANOL*****
&REAC ID='METHANOL' SOOT_YIELD=0.00 NU_H2O=2.00 NU_CO2=1.00
EPUMO2=1.329000E004 RADIATIVE_FRACTION=0.00 MW_FUEL=32.00 NU_O2=1.50/
*****SLIDE FILE*****
&SLCF PBX=14.50 QUANTITY='TEMPERATURE' VECTOR=.TRUE./
&SLCF PBX=17.50 QUANTITY='TEMPERATURE' VECTOR=.TRUE./
&SLCF PBX=5.70 QUANTITY='TEMPERATURE' VECTOR=.TRUE./
&SLCF PBZ=0.50 QUANTITY='TEMPERATURE' VECTOR=.TRUE./
&SLCF PBX=5.70 QUANTITY='DROPLET_FLUX_Y' VECTOR=.TRUE./
*****SPRINKLERS*****
&SPRK LABEL='SPRK #1-1' MAKE='K-5' PART_ID="" XYZ=3.50, 5.70, 3.00/
&SPRK LABEL='SPRK #1-2' MAKE='K-5' PART_ID="" XYZ=6.30, 5.70, 3.00/
&SPRK LABEL='SPRK #1-3' MAKE='K-5' PART_ID="" XYZ=9.10, 5.70, 3.00/
&SPRK LABEL='SPRK #1-4' MAKE='K-5' PART_ID="" XYZ=11.90, 5.70, 3.00/
&SPRK LABEL='SPRK #1-5' MAKE='K-5' PART_ID="" XYZ=14.70, 5.70, 3.00/
&SPRK LABEL='SPRK #1-6' MAKE='K-5' PART_ID="" XYZ=17.50, 5.70, 3.00/
&SPRK LABEL='SPRK #2-1' MAKE='K-5' PART_ID="" XYZ=3.50, 3.30, 3.00/
&SPRK LABEL='SPRK #2-2' MAKE='K-5' PART_ID="" XYZ=6.30, 3.30, 3.00/
&SPRK LABEL='SPRK #2-3' MAKE='K-5' PART_ID="" XYZ=9.10, 3.30, 3.00/
&SPRK LABEL='SPRK #2-4' MAKE='K-5' PART_ID="" XYZ=11.90, 3.30, 3.00/
&SPRK LABEL='SPRK #2-5' MAKE='K-5' PART_ID="" XYZ=14.70, 3.30, 3.00/
&SPRK LABEL='SPRK #2-6' MAKE='K-5' PART_ID="" XYZ=17.50, 3.30, 3.00/
*****SURFACE*****

```

```

&SURF ID='SHEET METAL' RGB=0.2000, 0.2000, 0.2000 C_DELTA_RHO=4.70
DELTA=1.300000E-003/
&SURF ID='CONCRETE' RGB=0.66, 0.66, 0.66 TEXTURE_MAP='concrete.jpg'
TEXTURE_WIDTH=0.50 TEXTURE_HEIGHT=0.50 KS=1.00 C_P=0.88
DENSITY=2.100000E003 DELTA=0.1000/
&SURF ID='METHANOL' RGB=0.4000, 0.4000, 0.4000 DENSITY=790.00 PHASE='LIQUID'
KS=0.2000 DELTA=0.1000 HEAT_OF_VAPORIZATION=1.101000E003
HEAT_OF_COMBUSTION=1.980000E004 TMPIGN=65.00 C_P=2.50
BURNING_RATE_MAX=0.0200/
*****THERMOCOUPLE*****
&THCP XYZ=17.50, 5.70, 2.90 QUANTITY='TEMPERATURE' LABEL='t5-2.9'/
&THCP XYZ=17.50, 5.70, 1.50 QUANTITY='TEMPERATURE' LABEL='t5-1.5'/
&THCP XYZ=17.50, 5.70, 0.3000 QUANTITY='TEMPERATURE' LABEL='t5-0.3'/
&THCP XYZ=14.70, 5.70, 2.90 QUANTITY='TEMPERATURE' LABEL='t6-2.9'/
&THCP XYZ=14.70, 5.70, 1.50 QUANTITY='TEMPERATURE' LABEL='t6-1.5'/
&THCP XYZ=14.70, 5.70, 0.3000 QUANTITY='TEMPERATURE' LABEL='t6-0.3'/
*****VENT POSITION*****
&VENT XB=13.50, 18.50, 5.00, 6.50, 0.1000, 0.1000 SURF_ID='METHANOL' RGB=0.00,
0.80, 0.80/ Vent
&VENT XB=1.00, 1.00, 0.00, 7.25, 0.00, 5.00 SURF_ID='OPEN'/ x0
&VENT XB=20.00, 20.00, 0.00, 7.25, 0.00, 5.00 SURF_ID='OPEN'/ x20
&VENT XB=1.00, 20.00, 0.00, 0.00, 0.00, 5.00 SURF_ID='OPEN'/ y0
&VENT XB=1.00, 20.00, 7.25, 7.25, 0.00, 5.00 SURF_ID='OPEN'/ y725
&VENT XB=1.00, 20.00, 0.00, 7.25, 5.00, 5.00 SURF_ID='OPEN'/ z5

```

ประวัติการศึกษาและการทำงาน

ชื่อ	นายวีระพงษ์ ราชเล็ก
ประวัติการศึกษา	วศ.บ. (วิศวกรรมไฟฟ้า) สถาบันเทคโนโลยี ราชมนเกล้า (พ.ศ. 2542)
ตำแหน่งปัจจุบัน	วิศวกร
สถานที่ทำงานปัจจุบัน	บริษัทไฮยาเลนซ์ ไทยแลนด์ จำกัด