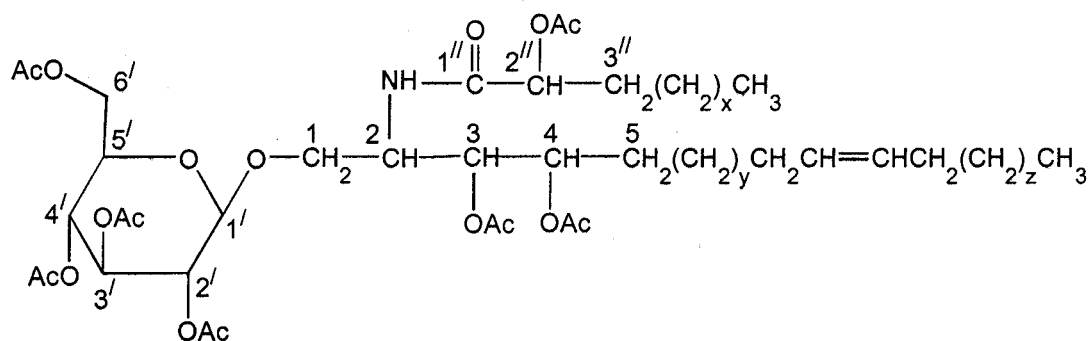


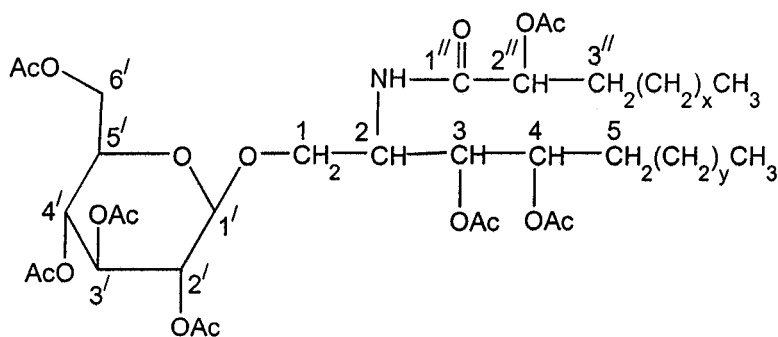
Thesis Title	CHEMICAL INVESTIGATION OF <i>CLINACANTHUS NUTANS</i> AND <i>CLINACANTHUS SIAMENSIS</i>
Name	Thongchai Srisanpang
Concentration	Chemical Studies
Department	Chemistry
Academic Year	1999

ABSTRACT

Three compounds, **CN-1**, **CN-2** and **CN-3** have been isolated from the ether fraction of ethanolic extract of the fresh leaves of *Clinacanthus nutans*. Structures of **CN-1** and **CN-2** were determined as their acetate derivatives, **CN-1a** and **CN-2a**. The structures of **CN-1a** and **CN-2a** were established on the basis of their spectroscopic data.



CN-1a



CN-2a

Three sulfur-containing amides, **CS-1**, **CS-2** and **CS-3** were isolated from the *n*-butanol fraction of the ethanolic extract of the fresh leaves of *Clinacanthus siamensis*. The structures were determined on the basis of the spectroscopic data. Two other compounds, **CS-4** and **CS-5** were also isolated from the ether fraction of the ethanolic extract of the fresh leaves of the same plant.

